

Campus To Get Dormitory, Classrooms

Behrend Campus Expands

By LOUIS ROSEN
Collegian Staff Writer
Third in a Series

One of the homiest of the Penn State branch campuses is Behrend, seven miles southeast of downtown Erie on a former private estate.

The 420-acre plot was donated to the University by the late Mrs. Mary B. Behrend, after a committee of Erie area residents offered to buy the estate.

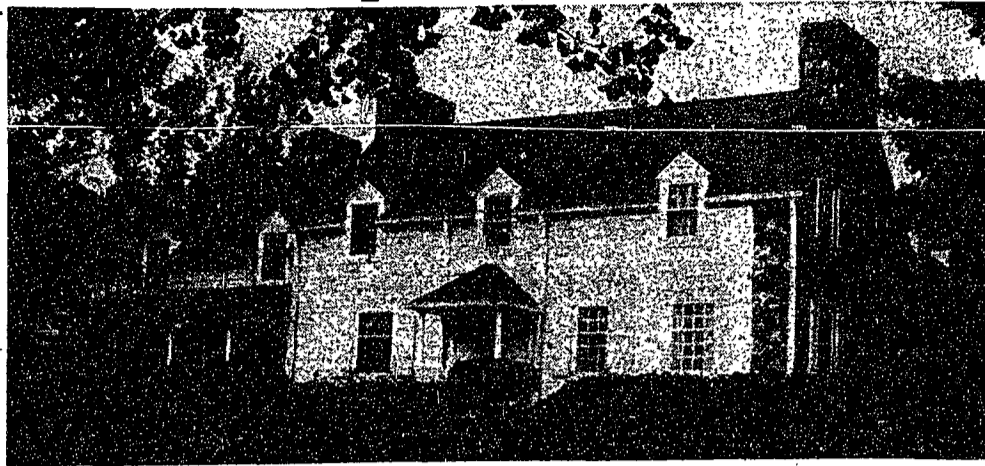
This campus is the only one in the Commonwealth system which bears the name of an individual family.

The main building, of colonial Dutch design, was once the home of the Behrend family. Other buildings on the campus have been designed to harmonize with the architecture design of the main building.

Campus Started 1948
The campus, which opened in Sept. 1948, was housed in buildings that already existed on the Behrend estate. These were converted for academic and administrative use, including a cafeteria and limited space for the housing of women students.

Over the 20 years of its existence, Behrend's physical plant has been modified and expanded to meet the growing enrollment and service of the campus.

In 1953, the first new building, Erie Hall, a gymnasium-auditorium, was completed with funds collected from community subscription. In 1962, the



THE MAIN ADMINISTRATIVE BUILDING, on Penn State's Behrend Campus, constructed of Colonial Dutch design, was once the home of the Behrend

family. Other buildings have been designed on the campus to harmonize with the Dutch theme.

Enrollment at Behrend has more than doubled since its beginning in 1948 and will continue to expand in the future.

Enrollment figures for Fall Term, 1968, show 574 full-time baccalaureate degree candidates and 189 associate degree students.

Rapid Development
The long-range development plans of Behrend call for a campus of 1,200 students by 1970. By 1975, it is probable that 3,000 students will be enrolled

at the campus, according to a spokesman. By 1980, it is conceivable that an additional 5,000 may attend.

Approximately 70 per cent of the students who enroll at Behrend come from the Erie area and commute from their homes to the campus daily.

The student body is composed of students from ten area school districts, with some students from the eastern United States and a few from foreign countries.

Students, Administrators, Faculty To Probe Unrest

By LARRY REIBSTEIN
Collegian Staff Writer

The Student-Faculty Committee for University Reform has scheduled a discussion between students, faculty and Administration representatives for 8 p.m. Thursday in 101 Chambers.

The meeting will bring together two members of each segment of the University. Clark Arrington, president of the Jazz Club and a member of the Douglas Association, and Jeff Berger, of Students for a Democratic Society, will speak as members of the student population.

Representing the faculty will be Robert Graham, assistant professor of secondary education, and William Rabinowitz,

head of the Department of Educational Psychology.

J. Ralph Rackley, provost, and Paul M. Althouse, vice president for resident instruction, will represent the administration.

Student unrest will be the focus of the dialogue. Specifically, the causes of the unrest and University response to the unrest will be discussed.

Kenneth H. Wodtke, associate professor of psychology, speaking on behalf of the Committee for University Reform, said, "The dialogue should be extremely valuable. At least there will be communication with a high level of the administration, which is unusual around here." Although the plans haven't

been completed, the discussion probably will open with the student representatives explaining the reasons for student unrest. Following this, the faculty and administration will present their views.

Wodtke remarked, "I am expecting that the faculty and administration will examine the reasons given by the students and suggest other causes if they disagree."

After the faculty and administration viewpoints, the panel will be open to questions from the audience.

When asked about the outcome of the discussion, Wodtke said, "The chances of getting real change depends on how many, tangible proposals are given."

Rush Deadline Extends

Coads who were unable to register for winter sorority rush Sunday may register this week in the Panel office in 213 Hetzel Union Building, Panel Council announced last night.

A Panel executive must be present when registering, and a one dollar registration fee is required.

To rush this winter, a coed must be of second term standing or above and have a 2.0 all-university average.

The Panel Council voted to endorse the idea of the faculty petition for University education for minority and poor youth with the stipulation that a study of the petition be made and presented to the council. The delegates want to be fully informed on the petition before endorsing a plan of action.

It was announced that the Panel slide and tape presentation has been completed. The program will be shown at Commonwealth Campuses during orientation week and to prospective rushees to present an idea of sorority life and the Greek system at the University.

ADVERTISING POLICY

The Daily Collegian will accept local display and classified display advertisements up to 4 p.m. two days before the ad is to appear in the paper. No advertisement will be accepted after this deadline.

Classified advertisements are accepted on a cash basis only and must be received by 10:30 a.m. the day before the ad is to appear.

Office hours of The Daily Collegian (Basement of Sackett, north wing): 9:30 a.m. to 4 p.m., Monday through Friday.

Fall Term Final Exam Schedule

(Continued from page four)

A large, multi-column table listing final exam schedules for various courses. Each entry includes a course number, title, and time slot. The table is organized into several columns, with some courses spanning multiple columns. The courses listed include subjects like Poultry Science, Psychology, School Psychology, Secondary Education, Solid State Science, Spanish, and many others.

Advertisement for 'Solution' featuring a large graphic of the word 'Solution' and text describing a method to increase term average. It includes contact information for Penn State and a 'CAMPUS CRUSADE FOR CHRIST' logo.

Advertisement for ZETE pledging, listing various fraternities and organizations such as Alpha Gamma Delta, Alpha Sigma Alpha, Alpha Omega Pi, Alpha Xi Delta, Alpha Phi, Delta Gamma, and Theta Phi Alpha. It promotes pledging for 'THEIR GOOD SPORTSMANSHIP'.

Advertisement for 'THE UNIVERSITY FORUM presents "CRISIS IN HIGHER EDUCATION" PART II'. It features a quote: '"CAN THE UNIVERSITY BE BOTH THE CENTER OF REVOLUTION AND A SCHOLARLY SANCTUARY?"' and lists speakers, respondents, and moderators, including Dr. John S. Toll, Galin Godbey, Jim Hardy, and Dr. Earnest Pollard. The event is on Tuesday, Oct 29, 1968, at 7:30 P.M. in the Hub Ballroom.

Advertisement for Hughes Aircraft Company. It asks 'Do you think a bright young engineer should spend his most imaginative years on the same assignment? Neither do we.' It describes a two-year rotation program for graduates and lists various engineering specialties like Microwave & Antenna Engineers, Electro-Optical Engineers, etc. It includes a photo of a man and contact information for campus interviews.

Advertisement for 'YOUR TABLE IS WAITING!' at Armenara Lanes. It features a graphic of a pool table and text promoting billiards at Armenara Lanes, just a block off campus, with hours from 7:50 a.m. to 10:00 p.m. Monday through Friday.