

News

Behrend Briefs

University Scholars Information Meeting: Today at 4:00 p.m. in the Memorial Room, Glenhill Farmhouse for those students interested in becoming a University Scholars are welcome to attend this informational meeting.

Charlie Baumann: Kicker for the New England Patriots will present "Aim High, Challenge Life, Think Success" at the Reed Lecture Hall at 7:00 p.m. tonight. A reception will follow in the Wintergreen Lobby.

Behrend Majors Fair: Lion Ambassadors and ODK are sponsoring a Majors Fair on Wednesday, February 17, from 10 a.m.-12 p.m. in the Reed Wintergarden. Students and faculty representatives will be on hand to answer questions about Behrend Majors.

Honors & Scholars Meeting: February 17, 1993 at 12 noon in the Memorial Room, Glenhill Farmhouse, freshmen and sophomores are invited to learn more about Honors & Scholars Program requirements and opportunities. Contact M. Trenkle at 898-6160.

Dress For Success Seminar: On Wednesday, February 17, from 5-6 p.m. there will be a seminars on "How proper attire will help you to land the job you want." The seminar for women will be in Reed 116 and for men in Reed 117.

Communications Career Night: On Thursday, February 18, Lambda Pi Eta is sponsoring a Career Night at 7:30 p.m. in the Memorial Room of the Glenhill Farmhouse. It is an opportunity to meet people working in the field of communications.

Education Abroad Deadline: March 1, is the deadline to apply for spring semester 1994 PSU Education Abroad Programs. Summer programs also available. Contact M. Trenkle at 898-6160.

Commuter Senator Seat Open: The Student Government Association has an open seat for a Commuter Senator. If you are interested contact Julian Hing at 898-6608 (Box # 1540), or Joe Mycka at 898-6220 (Box # 1353) by Feb. 17.

Commuter Council Open Forum: The Commuter Council is holding an open forum to hear commuter complaints on February 15, from 6:00-7:00 p.m. in Reed 117.

Annual Evening of Dubious Taste: The English Round Table Society is sponsoring their annual "Evening of Dubious Taste" on Tuesday March 2, at 7:30 p.m. in the Studio Theater. Bring your bad manners or something to read or present that is in bad taste. Refreshments will be served.

Studio Theater Production of *On the Verge*: The Matchbox Players present this semester's production of Eric Overmyer's *On the Verge* or *The Geography of Yearning*. Performance dates include: Feb. 18-20, 25-27 at 8 p.m. and Feb. 21 & 28 at 2:30 p.m. Tickets are \$4.00 general admission, \$3.00 students. Students are invited to attend the final dress rehearsal at 8 p.m. on Wednesday, February 17, free of charge.

Free Tutoring Available: All Behrend students are welcome to utilize the Learning Assistance Center's services. Student and faculty tutors are of duty daily offering help with many subjects. For more information call 898-6014 or drop by the Center located in the South Cottage.

Attention Collegian Staff: Reminder: there is a staff meeting today at 5:30 p.m. in Turnbull 205. If you cannot attend please notify your editor.

from THEFT on page 1

Third and subsequent offenses constitute a felony of the third degree, regardless of the value of the merchandise.

What also happens at the Wintergreen is that employees operating the cash register undercharge friends. That is also considered retail theft and both parties involved are charged.

"We're looking at other ways to make it better, but we also don't want to create the feeling that everyone that walks into the Gorge is a thief," said Silvis.

From DAY on page 1

Renovations to the child care building will feature appointments for both comfort and creativity, including small classrooms, indoor and outdoor play areas, a greenhouse, and an infant room.

Center hours will be from 7 a.m. to 6 p.m. weekdays year-round. "What makes Behrend's center unique is the flexibility of its scheduling," said Reber. "Full- and half-day care is available, as is scheduled hourly care, which students particularly like because they can schedule around their classes."

The Center will be licensed by the Pennsylvania Department of Public Welfare, and the teachers will be college-trained and experienced. It will be closed only eight days a year, not including weekends.

A limited number of admissions are being offered to the community on a space-available basis. For more information or for an admissions application, please call the Office of Student Affairs, at 898-6111.

Police Report

by Jeff Johnson
Collegian Staff

Towed Vehicle

On Wednesday, February 3, it was reported to Police and Safety that a vehicle owned by a student was parked in a staff only parking pace. Tim Martin's Towing Service was called to tow the vehicle. The student, however, returned to the vehicle before the tow truck left the lot. The tow truck driver was paid, and the vehicle was returned. The driver of the vehicle was cited for the offense.

Thefts

On Tuesday, February 2, the theft of a University paycheck was reported to the Police and Safety Department.

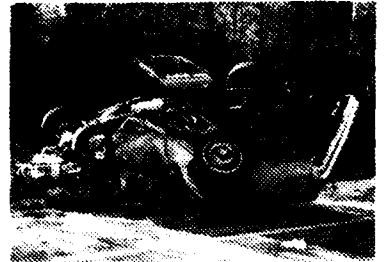
It has also been reported that a chair was taken from the Hammermill/Zum ground floor lobby. Both of these incidents are under investigation.

Medical Assists

On Tuesday, February 2, police were called to Niagara Hall for a student who was too sick to go to the Health Center on his own. He was taken to the Health Center by Police and Safety, and was later sent to the hospital by a nurse.

In a related incident, Police and Safety were called to Lawrence Hall for a student who was running in the hallway and ran into the edge of his room door. The student struck his head which caused a laceration at the outside edge of his left eyebrow.

Ever Get Somebody
Totally Wasted?



VALENTINE'S DAY

February 14th

Show someone you care

The Card Gallery

K-Mart Plaza East
4437 Buffalo Road
899-8782

Happy
Valentine's
Day

From the Ad Staff
Loretta, Terri & Jen

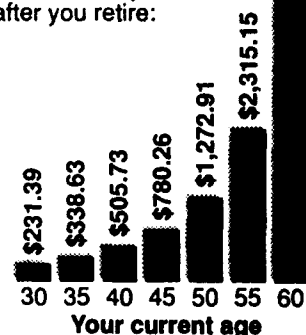
Master Tech Auto

5080 Buffalo Road
Erie, PA 16510
899-0980

Mechanical & Auto Body Work
State Inspections
Tune-ups
30 minute oil change
Foreign and Domestic

How much will you need to retire?

Here's how much you must save each month to accumulate enough money to withdraw the equivalent of \$25,000 in today's dollars each year after you retire:



Assumptions:
■ Retirement at 65; death at 81.
■ Savings earn 7 percent interest per year.

BE SMART! EARN
EXTRA CASH WHILE
HELPING OTHERS
BECOME A
PLASMA DONOR.



New Donors Receive \$15.00

on your 1st. lifesaving plasma donation - with this ad. Physical required - Call for physician's hours.

CALL FOR DETAILS
SERA-TEC BIOLOGICALS

453-2
1st 9th St.