

**Behrend's Weekly  
Newspaper**

# The Collegian

Thursday, October 1, 1992

Vol. XLI No.3

## Administration Turns Down Emery-Care

by Gary Johnson  
*The Collegian*

Behrend students may not have a choice when it comes to who will transport them to local hospitals when they are injured or ill.

After several years of cooperation with Emery-Care, a non-profit ambulance service in Erie, the Behrend administration has decided not to allow Emery-Care the chance to offer students special rates on their ambulance service.

The offer of Emery-Care services at these rates is information which is not easily accessed by the majority of Behrend students.

According to the administration, the misunderstanding that Emery-Care would not respond to calls from Behrend because of the recent denial of services to Behrend, is just that, a misunderstanding.

Emery-Care Paramedics respond to calls at Behrend, which have the potential to be life threatening.

The paramedics are able to provide a level of advanced life support which Emergency Medical Technicians are not trained for.

They (the paramedics) work in

cooperation with the Brookside Fire Company which is only licensed to provide basic life support.

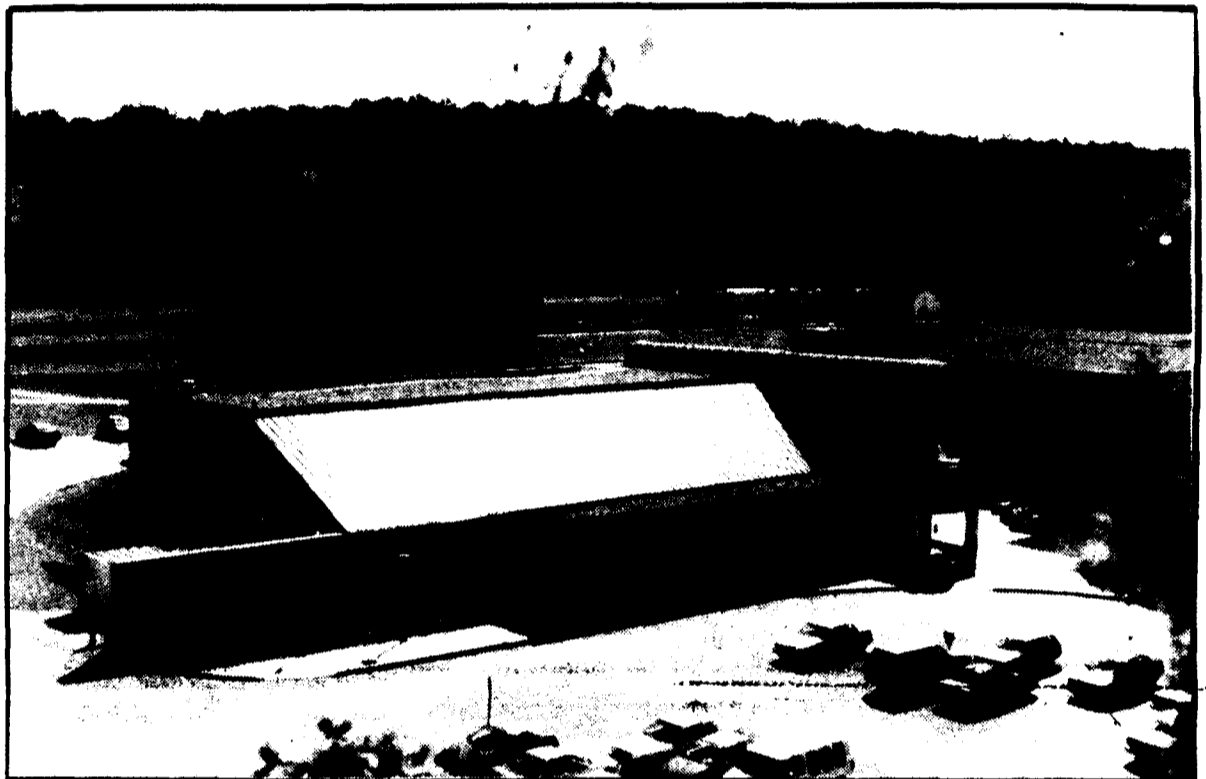
Emery-Care charges a fee only when the paramedic must accompany the patient to the hospital in the ambulance.

*They (the administration) said they had adequate coverage for the students and felt that they were in no need of our services."*

--Sabina Freeman  
Emery-Care PR coordinator

If the patient is a member of Emery-Care, then their insurance company will automatically be billed for the service. If the insurance company doesn't pay the full amount, the member is not required to reimburse the company for the remaining amount.

In the case that the patient is not covered by Emery-Care, then the full bill is sent to (continued on page 4)



Andrew Festa/The Collegian

**Bird's Eye View:** Ever wondered what Behrend looks like from above? The photographer climbed to new heights to capture the college from a bird's point of view.

## Bruno's Improves Programs

by April Bogdanski  
*The Collegian*

This year, Bruno's Night Club has been given a bigger allocation from the Student Government Association.

This will lead to Behrend having better negotiated contracts and better utilization of money. This will allow Bruno's to have live entertainment every weekend.

This year's live entertainment will include bands, comedians, folk singers and coffee house groups.

Montgomery Blues and Ric and Brian Butler are two of the bands who have performed at Bruno's already this year.

Ric and Brian Butler Performed at Bruno's this past Friday night.

"It's a really nice place," Ric Butler said. "I wish when I was in college we had had a place like this."

"It's very friendly," Brian

Butler said. "It's like we're not playing for an audience, but a group of friends."

*"For the first time in Bruno's history there is consistency and a well-defined structure."*

--Chris Hilden  
SPC president

Bruno's was created in the Spring of 1991 due to complaints from students that there was nothing to do on the weekends on campus.

The Student Programming Council, Housing and Food Services, and Student Affairs negotiated and came up with the idea for Bruno's.

Chris Hilden, president of the

Student Programming Council, said, "In Bruno's there is a terrific schedule of events."

"For the first time in Bruno's history there is consistency and a well-defined structure."

"I think it (Bruno's) would be better if there was a better attendance," said Shawn Davis, a ninth semester Computer Science major.

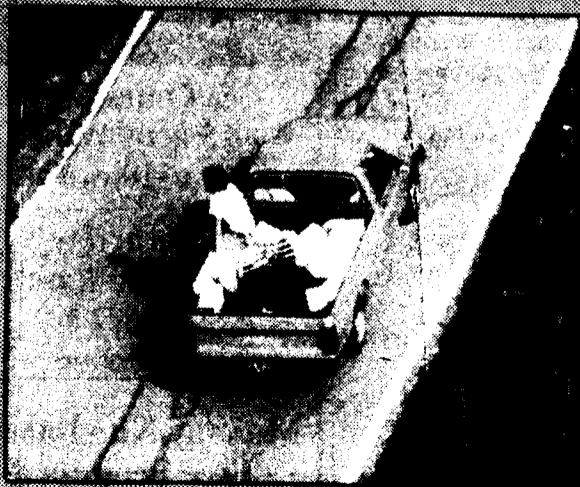
"I like the atmosphere at Bruno's, but I wish there were more people here."

Jacque Wade, a coordinator of residence life, said, "I think there's a wide variety of entertainment and can therefore appeal to a wide range of students."



Improved or not? *The Collegian* wants to know what you think. Please address comments to the editor.

### Who's working here?



Andrew Festa/The Collegian

Want a pizza? Meeted and, two of Behrend's maintenance workers, take a side while working on campus.