

Firefighters...

(continued from page 3)

comfortable and safe.

"They're learning these techniques so, for example, if it's extremely cold the patient doesn't die of hypothermia," he said.

"They're also learning about hauling systems--in other words, how we get the patient over that embankment, from the base of a bridge or the bottom of a factory

"We're teaching them self-rescue because you are either part of the solution or part of the problem."

**- Jacque Greiff
F.I.R.E.S. Instructor**

pit."

The purpose of the course, according to Greiff, is to train several people from each company so that they could be called upon in an emergency situation.

"We're trying to build a good strong basis in rescue knowledge so that hopefully we can go back

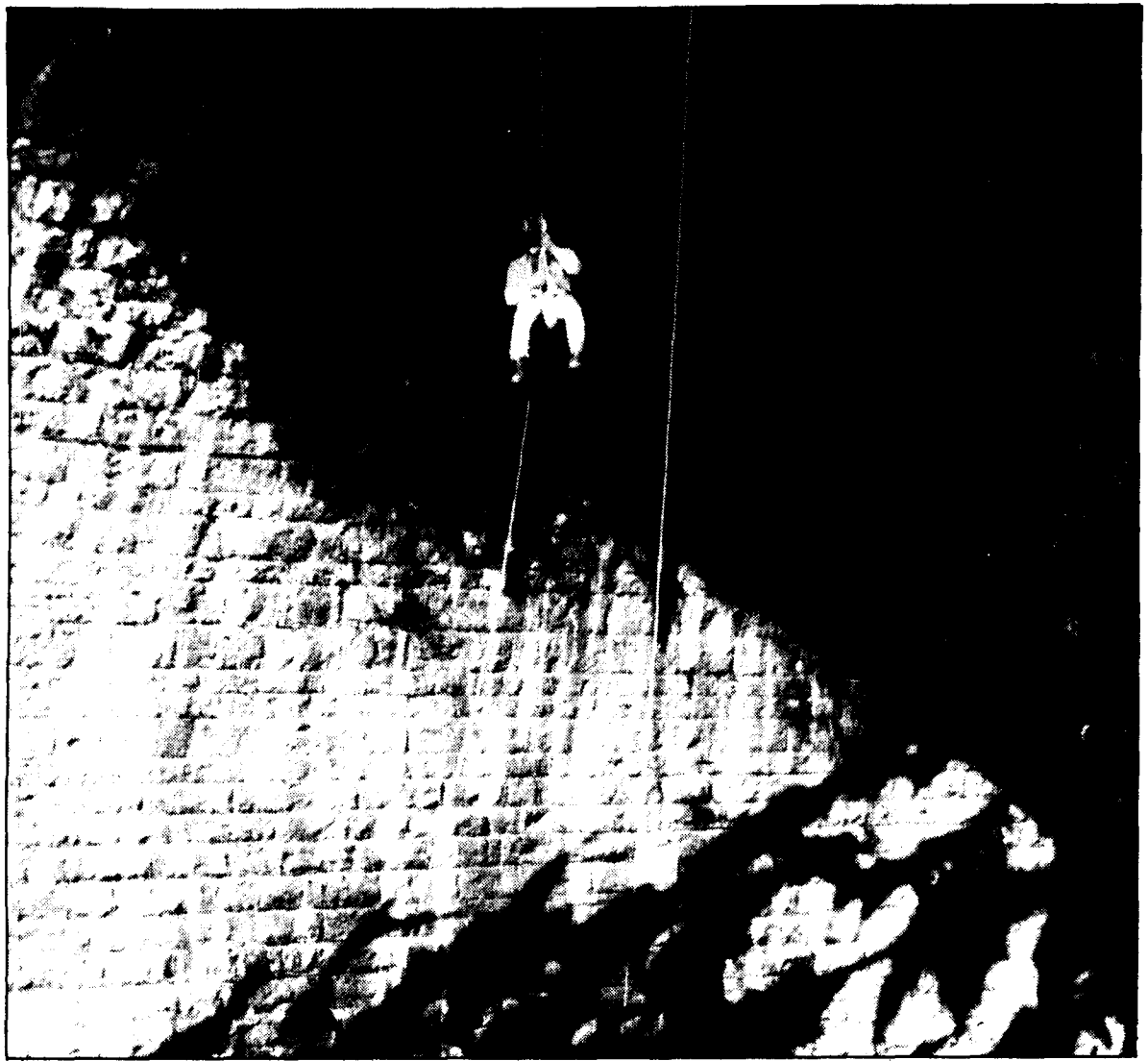
into the area in the next year or so and teach the core group advanced techniques," said Greiff.

F.I.R.E.S. teams have conducted rescues throughout the United States. However, at this time F.I.R.E.S. does not have a rescue team in this area.

"I would love to have a team in this part of the world so that I could call them for a rescue 50 miles east of here and so that I could end up with a team of 10 or 20 people whom I know and can depend on," Greiff said.

Gary Postlewaite, deputy chief for Brookside Fire Department, said, "If you have trained people around you can pull from them." He mentioned the problem some departments face when they become too dependent on volunteers who are trained in a specific area, "Everybody needs to be up to at least a basic skill level so that they can be safe."

Barbara Ritts has been a F.I.R.E.S. Instructor for seven years. Ritts is no newcomer to repelling. She once repelled an 1,100-foot-deep cave in Mexico. "Basically, we're just teaching people how to do the kinds of things we've had to do for quite some time," she said. "You have to be safety conscious when you're rigging these ropes."



Mark Owens/The Collegian

Long way to go: Rob Petrone, Behrend student and Kuhl Hose firefighter, takes a look around from 95 feet in the air during a rope rescue class.

BE SMART! EARN EXTRA CASH WHILE HELPING OTHERS. BECOME A PLASMA DONOR TODAY!

NEW DONORS - RECIEVE \$12.00 on your 1st. lifesaving donation
Bring this ad-physical required
Call for info. & Appt.
*Ask about our Bonus Programs

Plasma-Tec Ltd. 454-0070
111 West 9th St. Erie PA 16501

Lion Ambassadors Membership Drive Fall 1991

Date: Wednesday Oct. 16th
Thursday Oct. 17th
Friday Oct. 18th

Applications may be picked up in front of the library in the Reed Building from 10 a.m. - 4 p.m. on Wednesday and Thursday, and from 10 a.m. - 2 p.m. on Friday.

Applications due November 8th.

PENN STATE PRIDE!!

Announcing

WHO: You, Me, He, She, We, They!

WHAT: THEME MONTH PROGRAMMING

WHEN: Monthly!

August/September	Adjustment and Survival Skills
October	Career Development
November/December	Sexuality
January/February	Respect for Individual Differences
March	Relationships/Sexual Assault
April/May	Wellness

WHERE: Anywhere a poster, a program, an activity, a newsletter, a brochure, or a display is appropriate.

HOW: Just plan an activity, event, or any thought-provoking materials and schedule it on the campus calendar through the Office of Student Activities -- 898-6171. A monthly calendar listing all theme activities will be distributed.

WHY: Because we care!