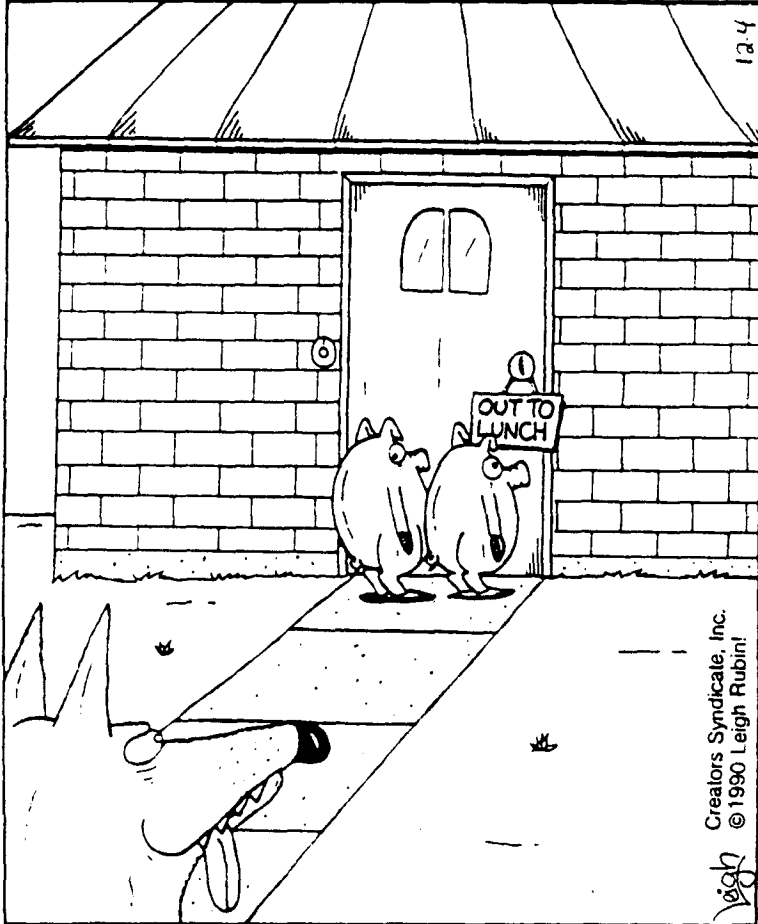


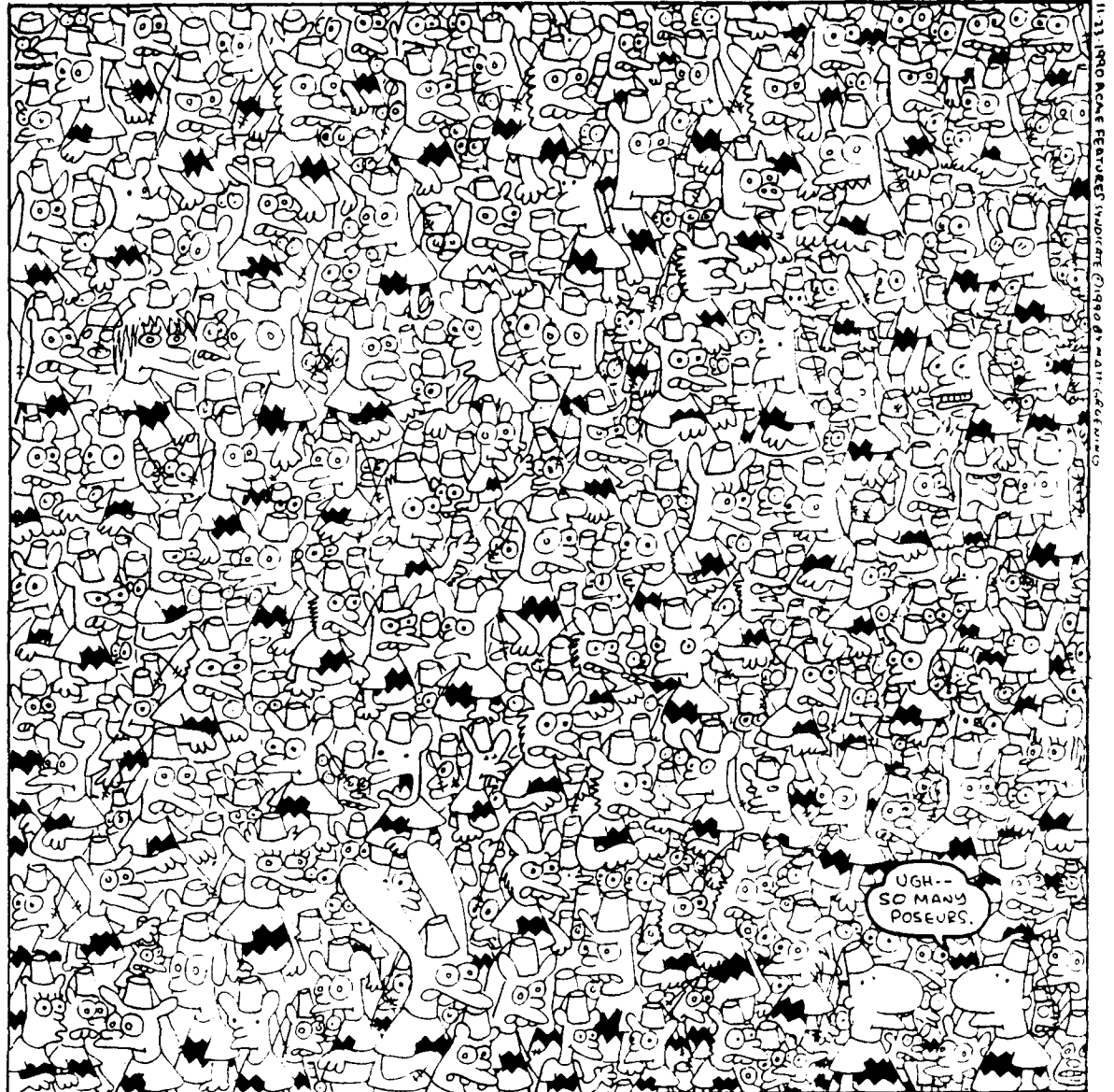
Comics

Rubes® By Leigh Rubin



LIFE IN HELL

©1990 BY
MATT
GREENING

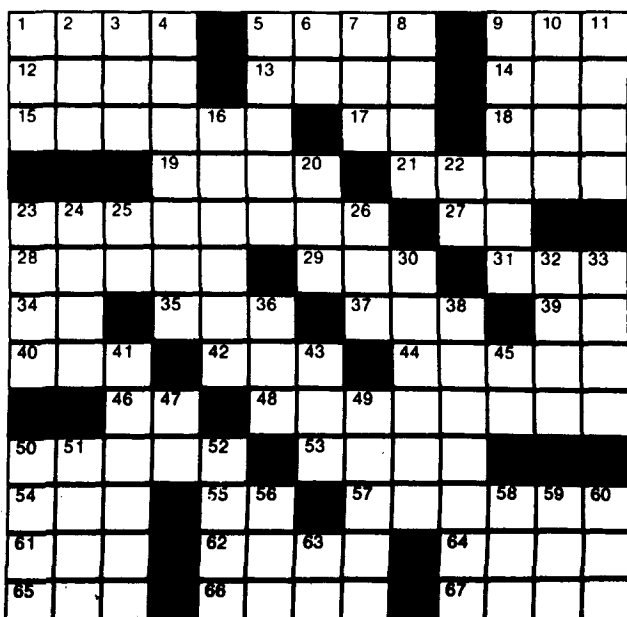


ACROSS

- | | | |
|-------------------------|----------------------------|-----------------------|
| 1 Portend | 50 Atmospheric disturbance | 16 Ankle |
| 5 Twist | 53 Gasp for breath | 20 Stitch |
| 9 Uncooked | 54 That woman | 22 River in Siberia |
| 12 First man | 55 Latin conjunction | 23 Wander |
| 13 Great Lake | 57 Chores | 24 Recedes |
| 14 Sudsy brew | 61 Native metal | 25 Hebrew letter |
| 15 Lures | 62 Dinner course | 26 Tattered cloth |
| 17 Symbol for tellurium | 64 Christmas carol | 30 Soften in temper |
| 18 Seed container | 65 Goal | 32 Gaelic |
| 19 Country of Asia | 66 Deposits | 33 Unwanted plant |
| 21 Lassos | 67 Color | 36 Cushion |
| 23 Newspaperman | | 38 Trying |
| 27 Exist | | 41 Accumulated |
| 28 Follows orders | | 43 Plunge |
| 29 Armed conflict | | 45 Near |
| 31 Condensed moisture | | 47 Either |
| 34 Hebrew month | | 49 Strains for breath |
| 35 Eat | | 50 Footwear |
| 37 Obtain | | 51 Gull-like bird |
| 39 Concerning | | 52 Army meal |
| 40 Manuscripts: abbr. | | 56 Pedal digit |
| 42 Mournful | | 58 Neither |
| 44 Rent | | 59 Oolong |
| 46 As far as | | 60 Crafty |
| 48 Classified | | 63 Guido's low note |

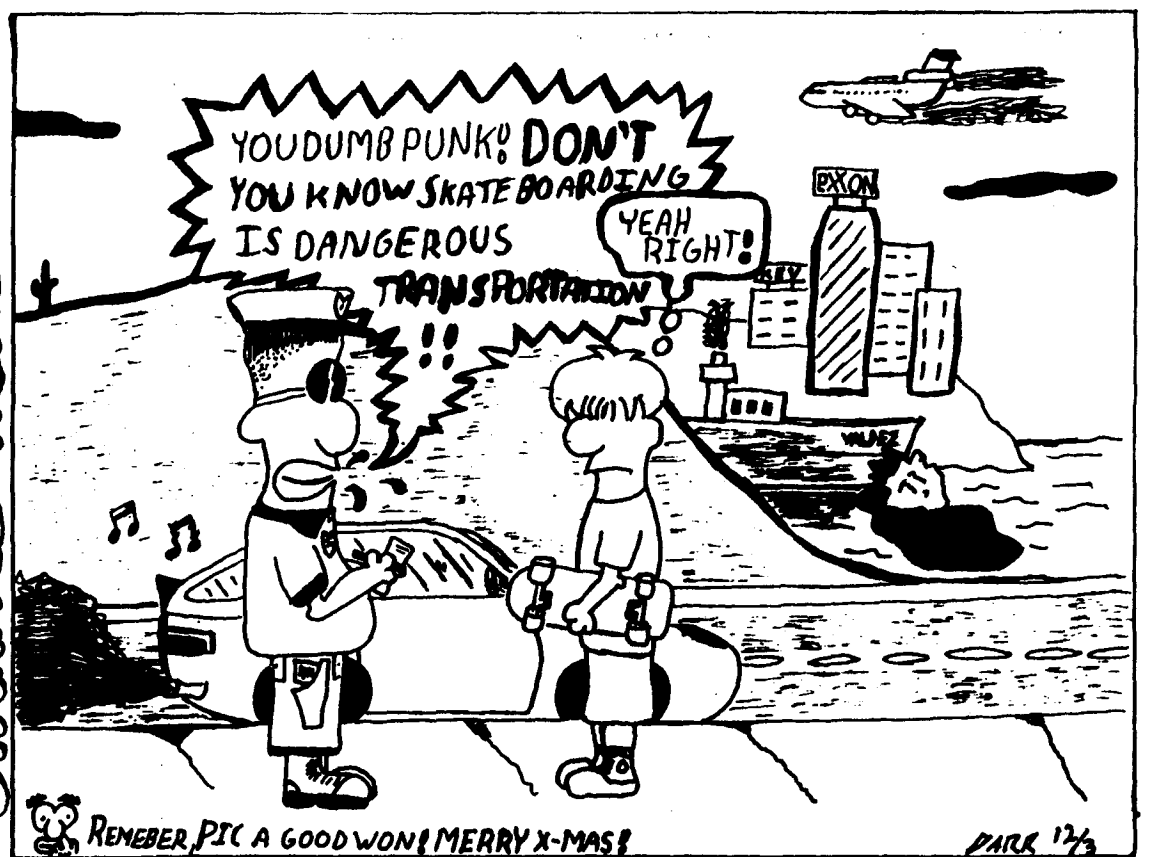
DOWN

- | | |
|--------------|-------------------|
| 1 Cudgel | 2 Poem |
| 3 Obstruct | 4 Uses |
| 5 Stupefy | 6 Teutonic deity |
| 7 Insect egg | 8 Antlered animal |
| 9 Knocked | 10 Century plant |
| 11 Marries | |



COLLEGE PRESS SERVICE

STRANGE WORLD



Last week's solution

