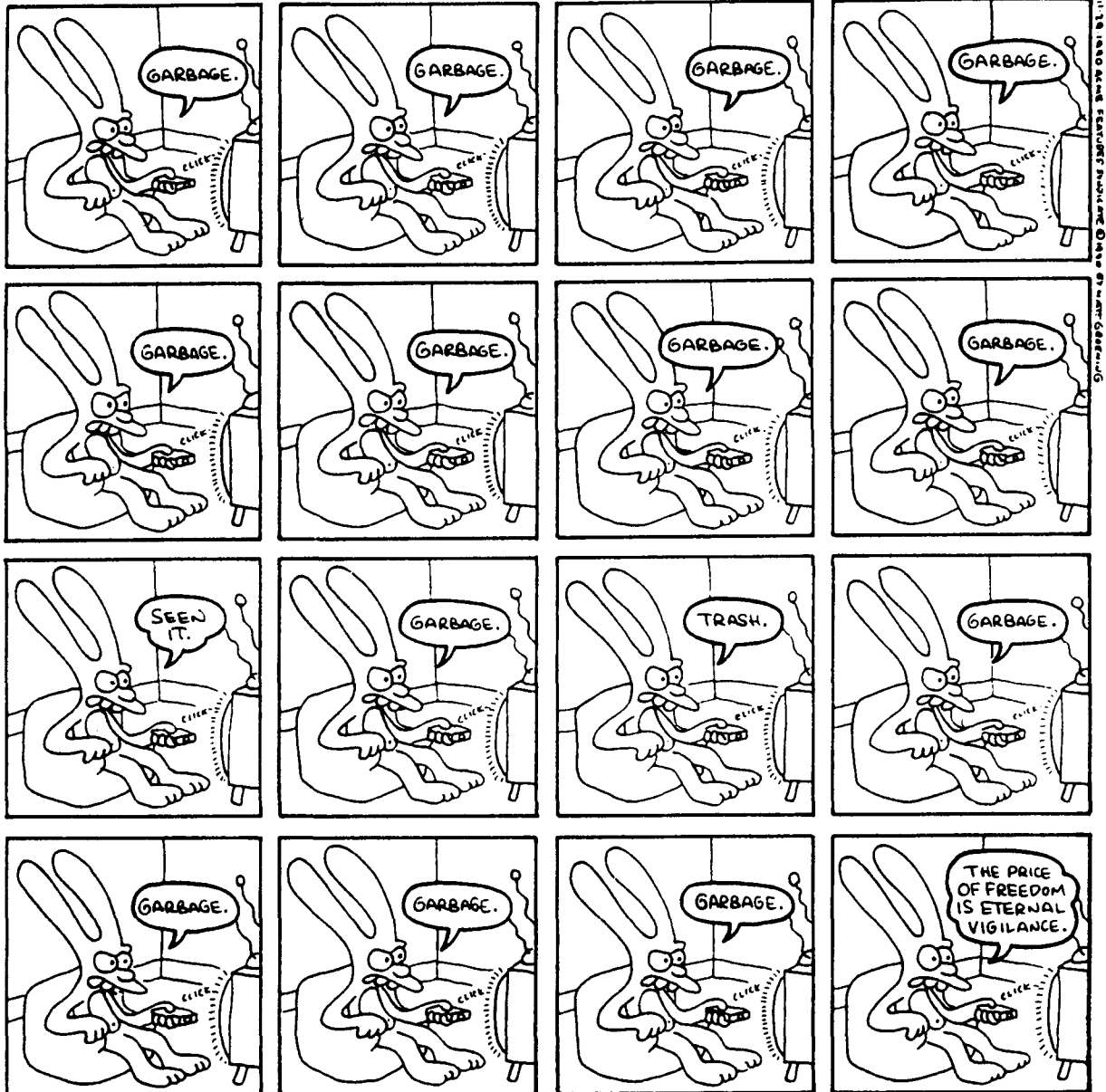


# Comics

## LIFE IN HELL

©1990 BY  
MATT  
GROENING

Rubes® By Leigh Rubin

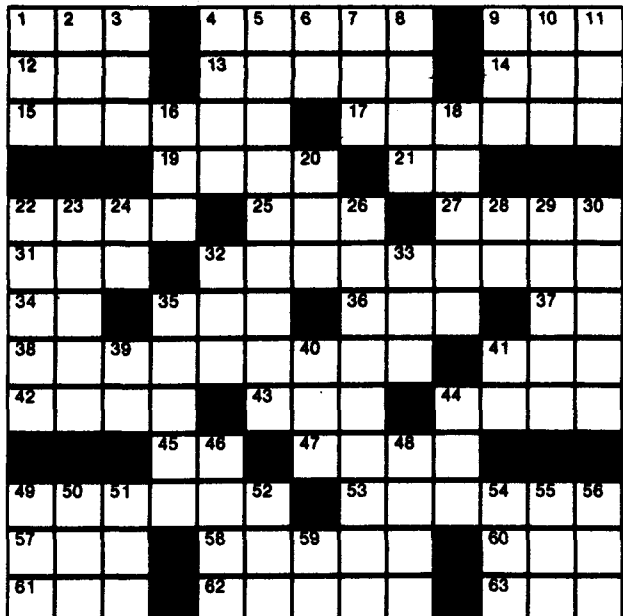


**ACROSS**

- 1 Mortarboard
- 4 Worship
- 9 Ventilate
- 12 Time gone by
- 13 Evergreen tree
- 14 Mountain on Crete
- 15 Leave
- 17 Headrest
- 19 Judge
- 21 Yes, in Spain
- 22 Among
- 25 Fish eggs
- 27 Drink heavily
- 31 Pigeon pea
- 32 Hushed up
- 34 Indian mulberry
- 35 Greek letter
- 36 Otic item
- 37 Symbol for tellurium
- 38 Heroism
- 41 Obstruct
- 42 Silkworm
- 43 Sea eagle
- 44 Spanish pot
- 45 Millimeter: abbr.

**DOWN**

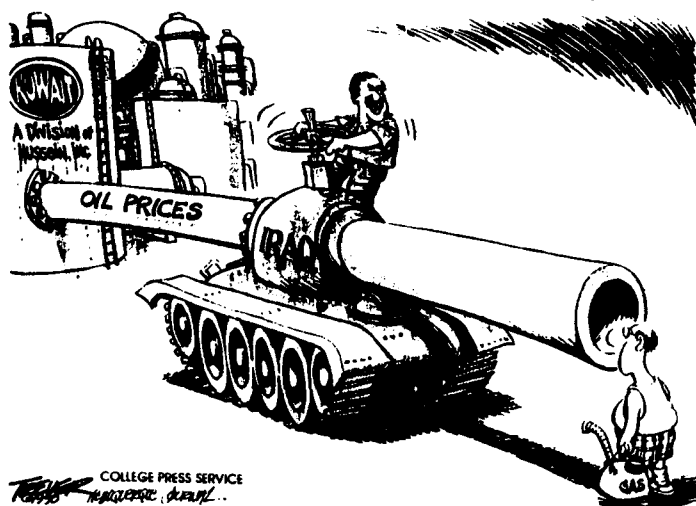
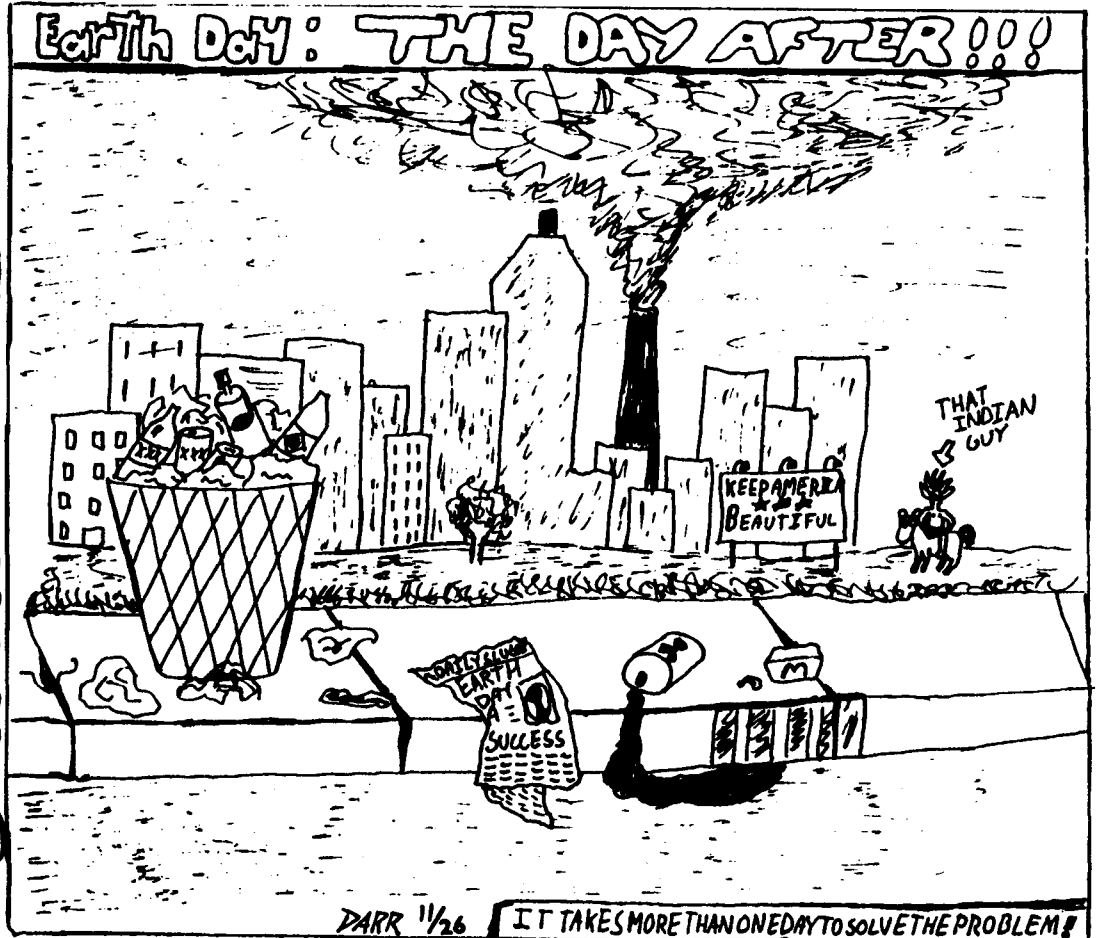
- 47 Play area
- 49 Soviet Union
- 53 Climbing device
- 57 Saloon stock
- 58 Variety of wheat
- 60 Be in debt
- 61 Obtain
- 62 Remains
- 63 Spread for drying
- 1 Uncouth person
- 2 Mature
- 3 Burst
- 4 Land measure
- 5 Decide
- 6 Hypothetical force
- 7 Knock
- 8 Goddess of discord
- 9 Be ill
- 10 Artificial language
- 11 Uncooked
- 16 Sum up
- 18 Liquid measure
- 20 Cry of cow
- 22 Proverb
- 23 Pertaining to the cheek
- 24 Negative suffix
- 26 Without end
- 28 Either
- 29 Part of flower
- 30 Dropsy
- 32 The urial
- 33 Grass mowed and cured for fodder
- 35 Bivalve mollusks
- 39 Chinese distance measure
- 40 Attempt
- 41 Deciliter: abbr.
- 44 Unusual
- 46 Unmarried woman
- 48 Rodents
- 49 Tattered cloth
- 50 Rubber tree
- 51 Deposit
- 52 Suitable
- 54 Speck
- 55 Female sheep
- 56 Crimson
- 59 Babylonian deity



COLLEGE PRESS SERVICE

## Earth Day: THE DAY AFTER!!!

### STRANGE WORLD



COLLEGE PRESS SERVICE

### Last Week's Solution

