

Murphy, Downey to leave Behrend

(continued from page 1)

has happened is that *The Collegian* is now a weekly paper. When I first got here it was a bi-weekly paper that told you what happened over the last two weeks. Now it's a weekly paper that tells you what's coming up over the next week and also critiques and evaluates what just happened. That's what a paper is supposed to do. It's so much better than it was. A radio station is also something I wanted to see happen. And now I walk by that station all the time and see different students broadcasting live. I think that's great; it's giving them a real good experience. Probably the best other thing is Student Programming Council. It's just excellent. You just see some real bright people going through there. It used to be where Student Programming would come to student activities for ideas. Now

it's the other way around. Now whenever I need brainstorming for an activity. I go to Student Programming Council," said Downey.

He feels that the worst thing he has encountered is the Penn State University Library System.

"...Not the librarians, not just our library, but the whole system. A University without a good library system is like a hospital without a life-support system," said Downey.

When asked about future plans after getting through school, he replied jokingly, "Sell brownies and follow the Grateful Dead around and wear tie dyes."

Actually, he isn't sure yet what he wants to do.

"I just like to study what I'm interested in and enjoy the work and writing and reading and all that sort of stuff. That's why I'm going back, because I enjoy that," said Downey.

Recycle...

(continued from page 2)

easy, a few problems may be encountered.

As Residence Life Coordinator Lori O'Sullivan noted, the problem lies in "how to market [the program] and educate the students on what can and can't be recyclable."

The recycling process, for example, can be complicated if individuals place items such as window glass, drinking glasses and lightbulbs (which are not recyclable) with beer and soda bottles (which are recyclable).

"We're going to have depend on student leaders to set the standard...and to get people motivated," stated O'Sullivan.

The education and marketing aspect of the plan is still in the "brainstorming" stage.

Likely routes of communication are resident assistant floor meetings, student organization involvement and more student programs focusing on the environment.

Another source of trouble may be unloading the recyclable

material to the industry sector once it has been collected on campus.

Few industries are in the recycling field, so trying to find a company to sell the bulk material to may be difficult.

Benefits

There are many benefits to recycling.

Materials taken out of garbage collection will lessen the burden on landfills and decrease garbage collection costs.

In addition, by reusing materials, the pace at which natural resources are used is eased. Materials that would have been thrown away can be put to another use. In economic terms there is an opportunity cost associated with recycling.

Prices around town

Here are some prices for local

recycling centers:

Aluminum sell for \$.38 per pound under 50 pounds and for \$.43 per pound over 50 pounds.

Glass can be sold for \$.01 per pound with 100 pounds minimum.

There is no reimbursement for newspaper. As a matter of fact, it costs \$10 per ton for recyclers to accept it, since this market is so oversupplied.


Nationwide

Pennsylvania is one of twenty-six states in the U.S. that has legislation mandating educational institutions and mid-sized communities to have recycling programs by a set date.

McDonalds has jumped on the recycling bandwagon. The corporation is running ads asking for suppliers of recycled material to be used in constructing, renovating and furnishing restaurants.

WORD PROCESSING/TYPING SERVICES

Resumes	Reports/Term Papers
Letters	Manuscripts
Charts/Graphs	Thesis
Flyers/Bulletins	Doctorial Thesis
Photocopying and Fax Service	



WORD SYSTEMS SERVICES, INC.

731 French Street
Erie, PA 16501

(Corner of 8th & French)
(814) 459-9911

10% Off with this Coupon

A LAST STRAW

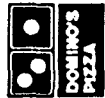
Fresh flowers for all your floral needs. Behrend students - 10% discount
898-1879

TRY OUR NEW PEPPERONI PIZZA FEAST FOR \$8.99

LOADED WITH EXTRA PEPPERONI AND EXTRA CHEESE. BUY NOW AND GET ANOTHER FOR JUST \$4.00 MORE.

453-6938
442 W. 18th St.
Downtown Erie
868-0971
4801 Peach St.
Upper Peach Area
833-8000
2823 W. 26th St.
Ferrier Plaza

899-1999
4265 Buffalo Rd.
Eastway Plaza
734-4481
218 Waterford St.
Edinboro
Open for lunch
11am - 1am Sun - Thurs
11am - 2am Fri & Sat.



IT'S TIME FOR DOMINO'S PIZZA®

Delivery areas limited to ensure safe driving ©1990 Domino's Pizza, Inc.

CALL NOW!

PAN DEAL!

Get a 12" Domino's Pan Pizza with EXTRA CHEESE and one topping and 2 cans of Coca-Cola® for only \$7.50. One coupon or offer per pizza.

Expires 5/27/90



Valid at participating stores only. Not valid with any other offer. Prices may vary. Customer pays sales tax where applicable. Delivery areas limited to ensure safe driving. Our drivers carry less than \$20.00. Our drivers are not penalized for late deliveries.

CALL NOW!

PEPPERONI FEAST!

Receive a 16" extra large pizza loaded with EXTRA PEPPERONI and EXTRA CHEESE for only \$8.99. Buy now and get another for just \$4.00 more. No coupon necessary, just ask. One offer or coupon per pizza. Additional items available at additional cost.

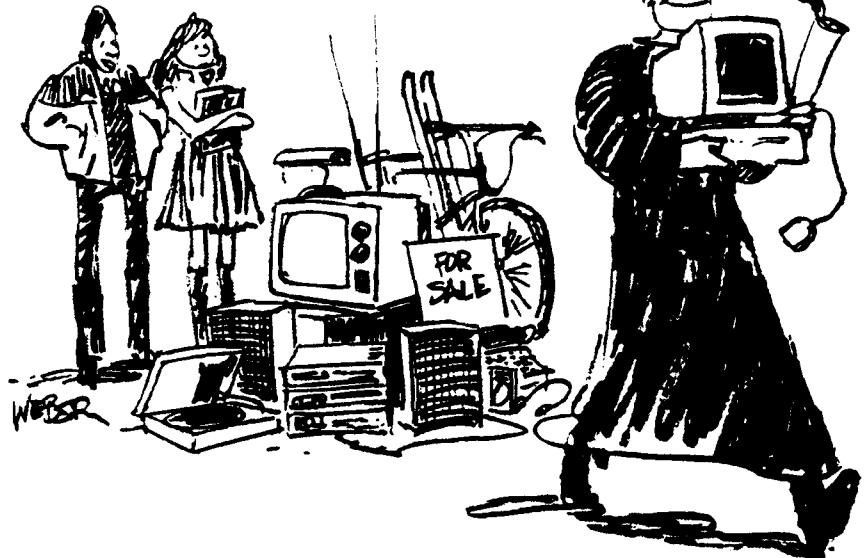
Expires 5/27/90



Valid at participating stores only. Not valid with any other offer. Prices may vary. Customer pays sales tax where applicable. Delivery areas limited to ensure safe driving. Our drivers carry less than \$20.00. Our drivers are not penalized for late deliveries.

Get an IBM PS/2 for as little as \$34/month

"He's selling everything but his PS/2. It's going to be part of his future."



How're you going to do it?

The IBM Personal System/2® not only helps you now, but can get you off to a fast start in graduate school or on the job. The PS/2® comes with easy-to-use, preloaded software, an IBM Mouse and color display. With a special student price and the IBM PS/2 Loan for Learning, it's very affordable.*

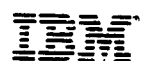
You can also get special prices on three models of the IBM Proprinter.™

But don't wait too long. Get a jump on the future now with an IBM PS/2.

PS/2 it!



To Order Contact:
MicroComputer Order Center
Penn State
University Park
(814) 865-2100



*This offer is available only to qualified students, faculty and staff who purchase IBM PS/2's through participating campus outlets. Orders are subject to availability. Prices are subject to change and IBM may withdraw the offer at any time without written notice.
IBM Personal System/2 and PS/2 are registered trademarks of International Business Machines Corporation.
Proprinter is a trademark of International Business Machines Corporation.
IBM Corporation 1990