

Midnight Oil...

(continued from page 9)

to Garrett's vocals, so the group's instrumental work is frequently restrained.

Garrett shines in the spotlight. The towering vocalist charges each track with his honest passion, providing a constant example of the band's sincerity.

Garrett's lyrical delivery alternates between a growl and a snarl, even slipping into a primal tribe-like scream on "Mountains of Burma." The style is ugly, but appropriate for the glum subject matter.

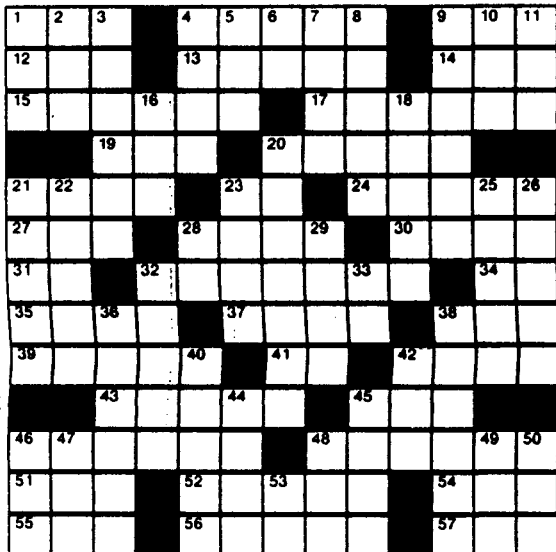
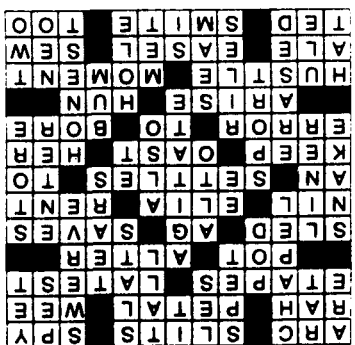
Although his enthusiasm is inspiring, Garrett's cloudy lyrics prove the downfall of *Blue Sky Mining*. *Diesel and Dust* succeeded because of the vividness its isolated lyrics carried. The expanded realm of *Blue Sky Mining* loses its rousing effectiveness in a glut of unnecessary metaphors.

ACROSS

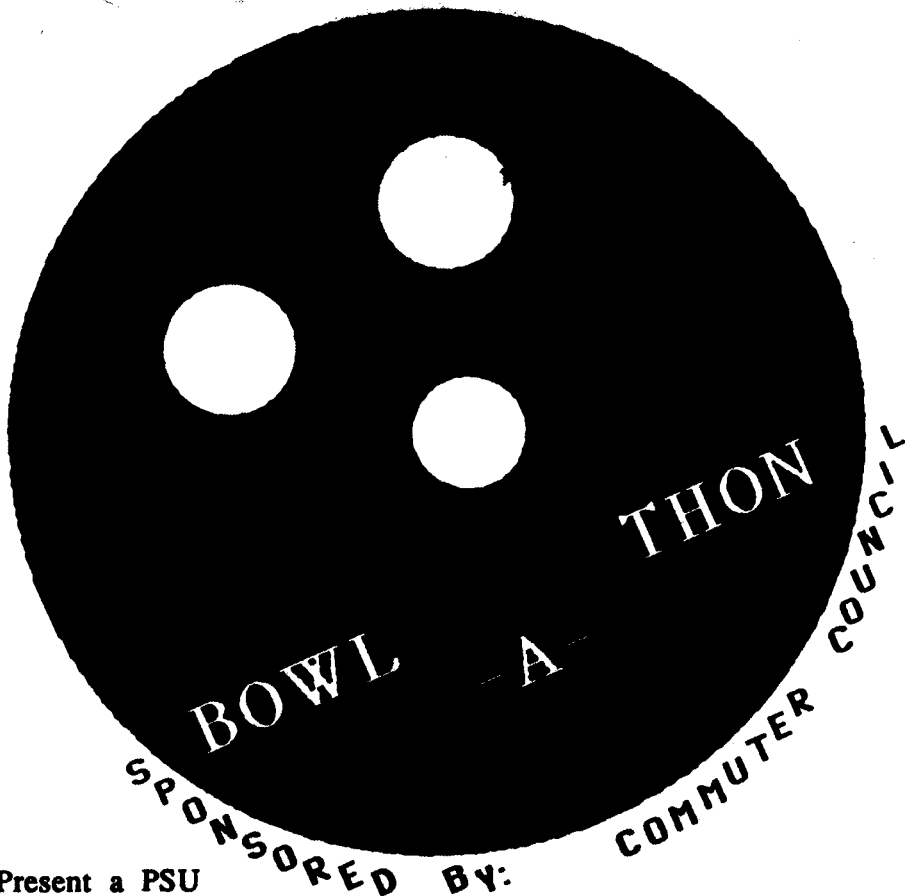
- 1 Part of circle
- 4 Narrow openings
- 9 Secret agent
- 12 Cheer
- 13 Part of flower
- 14 Tiny
- 15 Public storehouses
- 17 Newest
- 19 Vessel
- 20 Change
- 21 Winter vehicle
- 23 Symbol for silver
- 24 Rescues
- 27 Nothing
- 28 Lamb's pen name
- 30 Lease
- 31 Article
- 32 Colonizes
- 34 As far as

DOWN

- 35 Retain
- 37 Kiln
- 38 That woman
- 39 Mistake
- 41 Along with
- 42 Uninteresting person
- 43 Get up
- 45 Vandal
- 46 Jostle rudely
- 48 Instant
- 51 Saloon suds
- 52 Artist's stand
- 54 Stitch
- 55 Spread for drying
- 56 Strike
- 57 Also



- 8 Narrow, flat boards
- 9 Veer
- 10 Footlike part
- 11 Still
- 16 Seed container
- 18 Rips
- 20 Stir up
- 21 Viper
- 22 Inside covering
- 23 Singing voice
- 25 Go in
- 26 Retail establishment
- 28 College degree
- 29 In addition
- 32 Pastime
- 33 Latin conjunction
- 36 Expunged
- 38 Upright
- 40 Irritates
- 42 Drunken loafer: slang
- 44 Juncture
- 45 Pit
- 46 Chapeau
- 47 Rubber tree
- 48 Encountered
- 49 Prefix: new
- 50 Couple
- 53 Spanish for "yes"



Present a PSU Student ID and receive free shoe rental and discounted games.

Pick up a sponsor sheet in Commuter Council Office

9:00 pm on April 20th

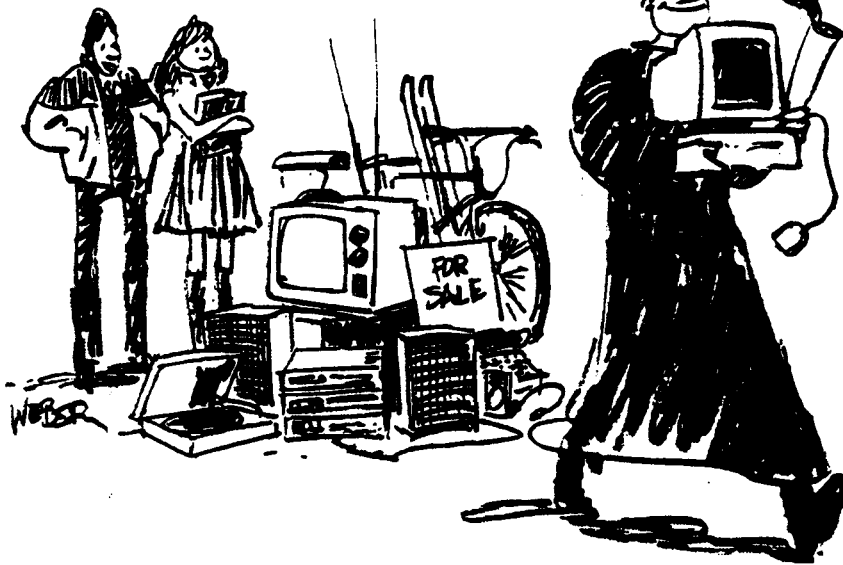
at

EASTLAND BOWLING
3729 McClelland

Benefits: DIEHL SCHOOL PLAYGROUND FUND

Get an IBM PS/2 for as little as \$34/month

"He's selling everything but his PS/2. It's going to be part of his future."



How're you going to do it?

The IBM Personal System/2® not only helps you now, but can get you off to a fast start in graduate school or on the job. The PS/2® comes with easy-to-use, preloaded software, an IBM Mouse and color display. With a special student price and the IBM PS/2 Loan for Learning, it's very affordable.*

You can also get special prices on three models of the IBM Proprinter.†

But don't wait too long. Get a jump on the future now with an IBM PS/2.

To Order Contact:
MicroComputer Order Center
Penn State
University Park
(814) 865-2100

PS/2 it!



IBM

*This offer is available only to qualified students, faculty and staff who purchase IBM PS/2's through participating campus outlets. Orders are subject to availability. Prices are subject to change and IBM may withdraw the offer at any time without written notice.
†IBM, Personal System/2, and PS/2 are registered trademarks of International Business Machines Corporation.
IBM Corporation 1990.

ARTCARVED. FOR EDUCATED TASTES.



NOW! SAVE UP TO \$100 AND DON'T PAY 'TIL AUGUST!

ARTCARVED

DATE: APRIL 19,20

TIME: 10-4

PLACE: BOOKSTORE