

IGC accepts ZBT
second time around -
Page 4

Ziggy Marley brings
back reggae music -
Page 10

Sports Editor John
Musser talks Series -
Page 12

The Collegian

The Collegian Wednesday, October 18, 1989

Behrend's Weekly Newspaper

Volume XXXVIII, No. 7

Library construction will wait until spring *Architects miss deadline*

Joe Williams
Collegian Staff Writer

Work on a new library and academic complex that was to have begun this fall has been delayed until spring.

"The architects went beyond their deadline which caused delays downstream," said Jack Burke, associate provost and senior associate dean. "The architects have turned their plans over to the Department of General Services, which reviewed them." The department had some engineering questions which had to be resolved.

The project is now with the director of the budgets desk, who will package the project and send it out for bids soon, according to Burke. Dates haven't been set for the bidding, but by the time it's completed the ground will probably be frozen.

Nine point seven million dollars have been set aside for the project by the state government.

"The library and academic complex will feature a three story library," said Bob Rose, associate librarian. According to Rose, the first floor of the complex will contain the Instructional Communication Center, the circulation desk, language labs, more LIAS computers, and group study rooms.

The main level will have the reference collection, periodicals, a gallery, offices, and study space. "The library will provide space for 900 students to study at one time," said Rose.

The academic building will provide additional classrooms, faculty offices and will hold the Division of Humanities and Social Sciences.

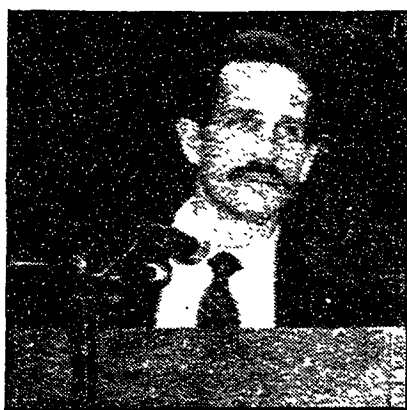
Officials hope to begin construction in mid-spring. Once the library complex is up and running, work can begin on the multi-purpose building, the funding for which needs to be passed by the state legislature and signed by the government.



photo by Stephanie Vogus

Library view: Behrend's library, shown here from the 2nd-floor quiet study area, will have to continue to meet the college's needs until the fall of 1991, when construction on a new library should be completed.

Erie Panthers Coach: The athlete and substance abuse National Alcohol Awareness Week gets underway at Behrend



**Panther's Coach
Ron Hansis**

by Mike Leshner
Collegian Staff Writer

Ron Hansis, head coach of the Erie Panthers told Behrend students that it's self-defeating for athletes to use drugs.

Hansis spoke last evening to help kick off Behrend's recognition of National

Collegiate Alcohol Awareness Week.

Hansis and several team members of the Panther's hockey club spoke to Behrend students about athletics and substance abuse.

Steve Moore and Darrin Miciak represented the Panther's players at the seminar.

Hansis opened the evening by talking about his feelings on substance abuse.

Hansis said that the human body is the most valuable asset a human has. He continued by saying that there is nothing more important than a person's health, repeating the old adage that "you can't buy health."

Hansis said that hockey, like all sports, is demanding and stressful on the human body. Why, Hansis reasoned, be even more stressful on your body by partaking in drugs or alcohol.

KNOW YOUR LIMITS

CHART FOR RESPONSIBLE PEOPLE WHO MAY
SOMETIMES DRIVE AFTER DRINKING!

APPROXIMATE BLOOD ALCOHOL PERCENTAGE										
Drinks	Body Weight in Pounds								Influenced Rarely	
	100	120	140	160	180	200	220	240		
1	.04	.03	.03	.02	.02	.02	.02	.02	Possibly	
2	.06	.05	.05	.05	.04	.04	.03	.03		
3	.11	.09	.08	.07	.06	.06	.05	.05		
4	.15	.12	.11	.09	.06	.06	.07	.06		
5	.19	.16	.13	.12	.11	.09	.09	.06		
6	.23	.19	.16	.14	.13	.11	.10	.09	Definitely	
7	.26	.22	.19	.16	.15	.13	.12	.11		
8	.30	.25	.21	.19	.17	.15	.14	.13		
9	.34	.28	.24	.21	.19	.17	.15	.14		
10	.38	.31	.27	.23	.21	.19	.17	.16		
Submet .01% for each 40 ounces of drinking One drink is 1 oz. of 100 proof liquor, 12 oz. of beer, or 4 oz. of table wine.										
SUREST POLICY IS . . . DON'T DRIVE AFTER DRINKING!										

Substance .01% for each 40 minutes of drinking
One drink is 1 oz. of 100 proof liquor, 12 oz. of beer, or 4 oz. of table wine.
SUREST POLICY IS . . . DON'T DRIVE AFTER DRINKING!

The Erie Panthers had a highly successful season last year, being crowned East Coast Hockey League (ECHL) regular season champions and earning the top playoff berth.

But the Panthers started celebrating their regular season success a little too early, said Hansis.

Several of the Panthers were spotted at some of Erie's "watering holes," he said.

The Panthers promptly dropped their first playoff series, losing in four straight games.

According to Hansis, the players who had been out celebrating really let down the team. The players thought it was possible to celebrate and play good hockey, but Hansis knew that they were "burning the candle at both ends."

Hansis mentioned the ECHL's policy on substance abuse. The ECHL conducts random drug testing during the season. If caught for substance abuse, the

(continued on page 12)

Questions raised about WPSE's news role

by James Martin
Collegian Editor

"I'm concerned with the problem of controversial issues," said WPSE Station Manager Ken Bunting. "I get the feeling (the administration) is concerned the University might be shown in a bad light and they are steering us away from controversial issues," he added.

"I think there are some stories that we should do that might not reflect well on Behrend," agreed Mark Owens, news director for WPSE.

"The station is different from the newspaper in that we have a much broader audience and have to cater to a much larger group than just the school. But, certainly there are stories here

(continued on page 4)