

**MOUNT JOY
HOUSE FOR RESTORATION**
213 West Main Street
Mount Joy

Large brick house
Open stairway in hall
2 fire places
3 bedrooms, 1 1/2 baths
Oil hot water heat

One of Mount Joy's oldest homes
original owner
was associated with the Brady Foundry

ASKING **\$21,500**

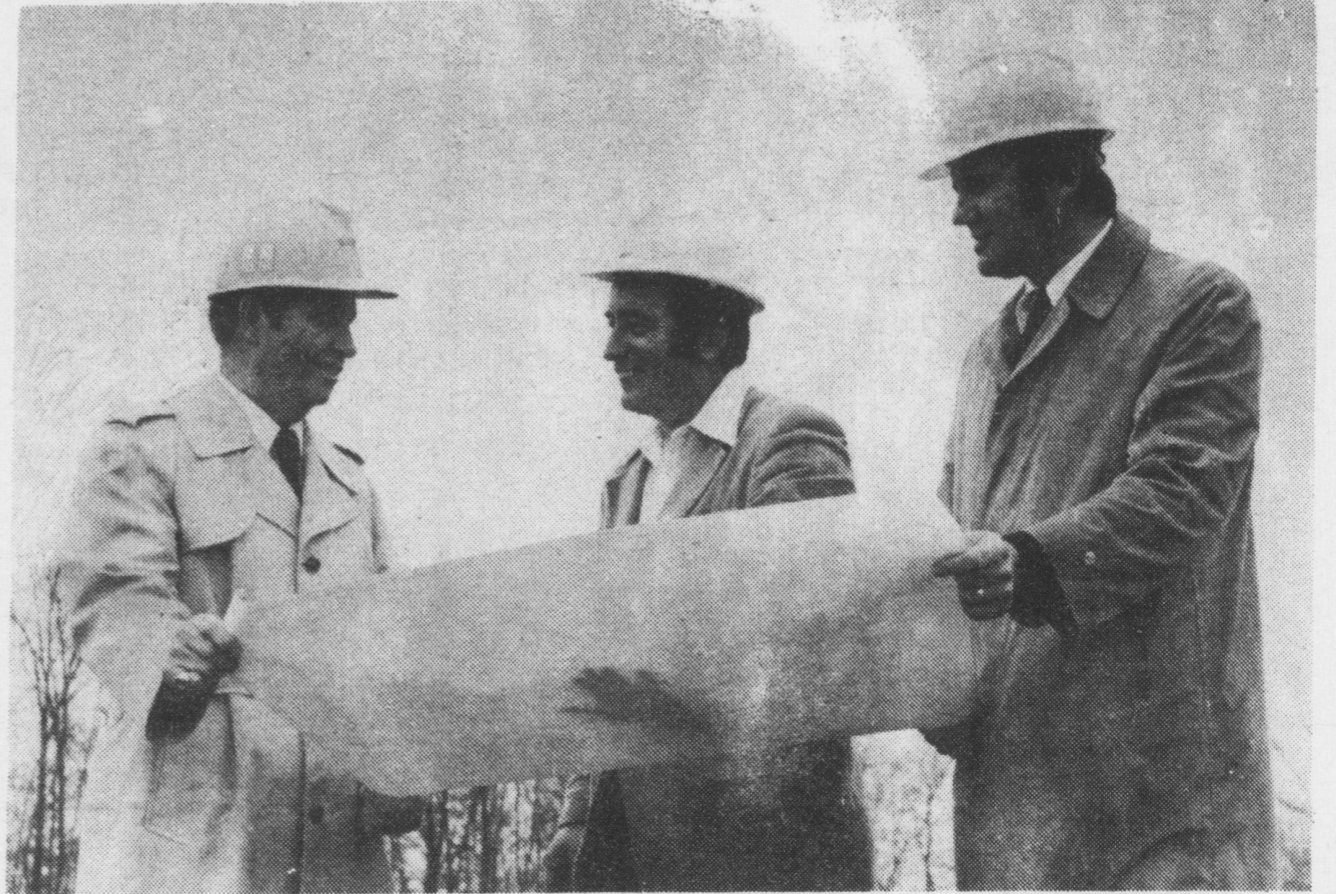
GERALD R.
SHEETZ REAL ESTATE
Call 653-1481

**COLUMBIA
FACTORY
OUTLET
BED
SPREADS
DRAPES**

LINCOLN HI-WAY 1/2 MILE EAST OF
COLUMBIA TURN SOUTH ON OSWEGO DRIVE

SAVE 20%-50%

DECEMBER
HOURS
Daily 9-9 until Xmas
(684-6341)



Looking at blueprints after groundbreaking ceremony are, from left to right; Brent S. Shunk, Vice-president, Lancaster Division of PP&L, David G. Heisey, President of David G. Heisey Inc. of Elizabethtown, and John J. Dobosh, Project Co-ordinator for PP&L.

PP&L solar house to be built here

The first step was taken toward construction of an energy-efficient home when ground was broken for the project November 21 at "Pleasant View Estates" near the Manheim-Mount Joy Interchange of Route 283 in Rapho Township.

According to John J. Dobosh, PP&L Project Co-ordinator, "The house being built and owned by David G. Heisey, Inc., Elizabethtown, will incorporate the latest concepts in insulation and heating known today. We hope to bring the ideas before the public for their inspection and use in future home construction."

The two-story English tudor-style home will have three bedrooms, two and a half baths, living room, recreation room, dining room, kitchen and attached two car garage. The 2,000 square foot house will utilize a heat pump for the basic warm air heating system.

Energy from solar panels will supplement the heat pump system and the domestic hot water heating system. The solar collectors will also act as a privacy screen for the patio area. The panels are manufactured by Enviropane, Inc. of Lancaster.

The latest technology in insulation will be used with one inch tongue and grooved styrofoam exterior sheathing and full thick insulation in the walls. The attic will have 10 inches of fiber insulation blown in. Urethane foam will be used to seal cracks around doors and windows. Triple glazed windows will be installed instead of the standard double panel models which are much more common.

A ventilation heat exchanger will provide controlled amount of fresh air and recover heat from exhaust air in the virtually

air-tight home. Ventilators will also be installed to provide outside combustion air to the base of the fireplace. A glass fireplace screen will be installed to eliminate the use of heated room air for combustion.

Dobosh said that completion is expected in early spring. Soon after that the home will be open to the public for inspection throughout the summer of 1976. The builder is cooperating with PP&L and will use this bicentennial year project as an example of how to conserve energy.

"Upon completion we will have an excellent example of an energy-efficient home for inspection by builders and prospective home buyers. Something to look at and see the latest developments in conservation techniques for future American homeowners," concluded Dobosh.

GIVE PRACTICAL *this Christmas*

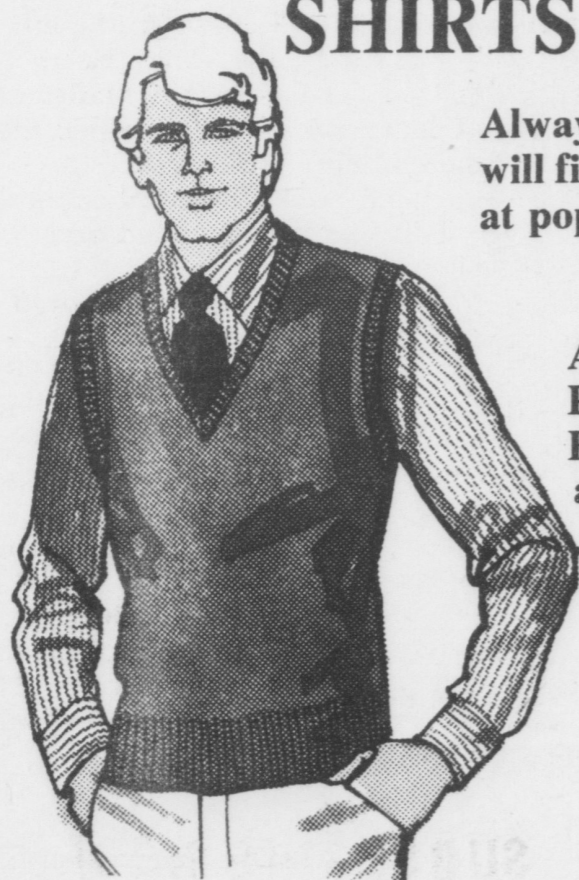
Give practical gifts of clothing to the men and boys on your gift list. You'll find our store jam packed with good quality clothing and furnishings, in the broadest and best quantities ever.

SHIRTS & SWEATERS

Always lead the gift list. And you will find all the best names here and at popular prices too.



ARROW, ENRO, ESSLEY,
PURITAN, LORD JEFF,
ROBERT BRUCE, LA STRATA
and DRUMMOND

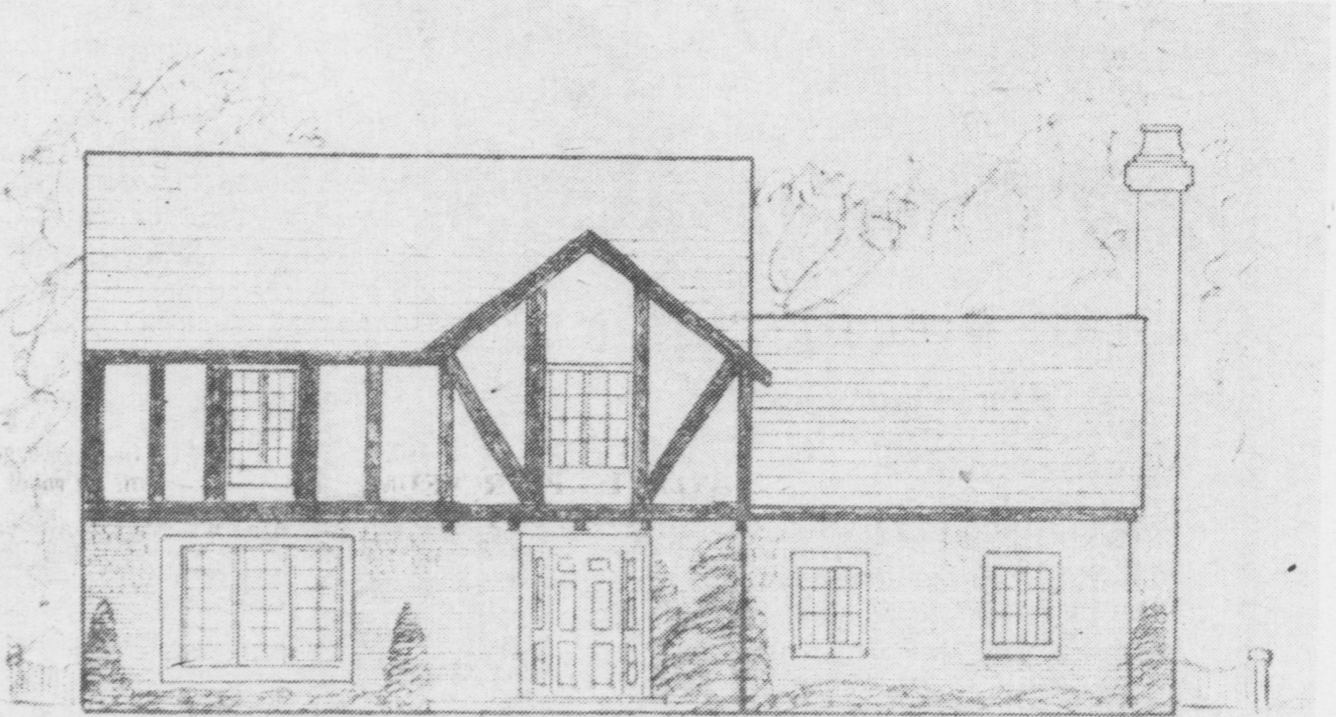


- *Free Gift Boxes
- *Personal Service
- *Open Every Night
Beginning Dec. 4

David Martin STORES

ELIZABETHTOWN & MIDDLETOWN

Mon., Tues., Wed. 9:00 to 5:30
Thurs. & Fri. 9:00 to 9:00
Saturday 9:00 to 5:00



Jr. High parents invited to DHS

Parents of all eighth grade students at W. I. Beahm Junior High School are being sent invitations to visit Donegal High School during the month of December for an orientation program to learn more about the high school curriculum

and the activities program.

Parents are urged to arrive at the high school at 11 a.m., on the day designated on the invitation for a briefing by administrators and counselors.

After lunch in the high

school cafeteria, they will be guided into regularly scheduled afternoon classes.

At the end of the day they will meet in small groups with counselors and administrators to review the program and have a question and answer session.