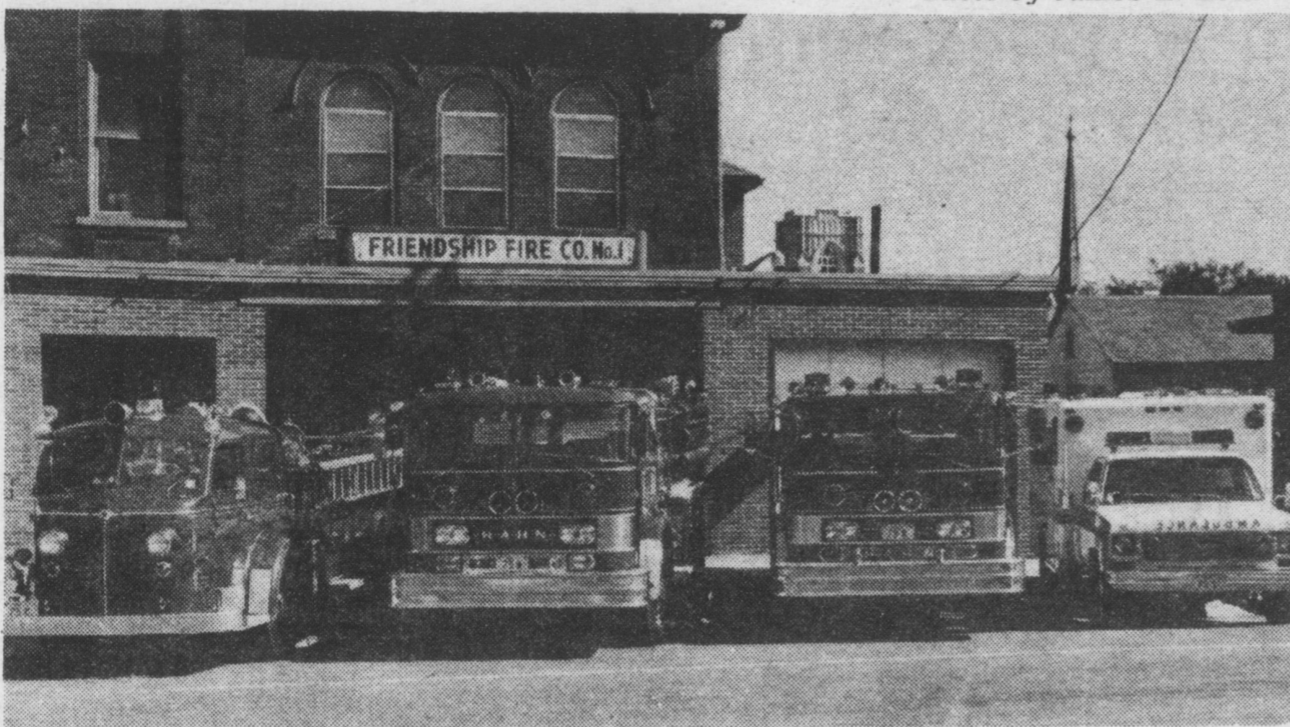


## Friendship Fire Co. No. 1

Photo by James E. Beck

Friendship Fire Engine Co. No. 1 was organized January 27, 1868 and Chartered September 27, 1869. The word "Engine" was dropped in 1945. The first equipment was housed in the town hall (now U.S. Post Office) until 1894, when part of the present building was built. In early 1940's the building was enlarged. The first motorized equipment was a 1920 American LaFrance and 1920 Buffalo Chemical Engine. The late Kauffman T. Keller (former pres. of Chrysler Corporation) donated a 1936 and 1949 Dodge to the Department. The Ambulance Committee was formed in 1951 with a Chevrolet Service Car.

Present equipment includes a 1974 Hahn, 1971 Hahn, 1949 American LaFrance, and 1974 Horton Ambulance.



**Officers of the Friendship are:**

**Administrative:** Pres., - Doug Estock, 1st Vice pres., - Don Snyder, 2nd Vice Pres., - Galen Rutt, Secretary - George Hedrick,

Treasurer - Dennis Fackler. **Tactical:** Chief - Frank Good, Ass't. Chief - Jim Markley, Chief Engineer - Tom Markley, Captain - Gerald Grove, 1st Lieutenant - Leo Shank, 2nd Lieutenant - George Hed-

rick. **Members of the Ladies Auxiliary Include:** Pres., - Edith Etsell, Vice Pres., - Dot Hedrick, Secretary - MaryJane Wargo, Treasurer - Chris Snyder.

## Bainbridge Fire Co.

Photo by James E. Beck



The Bainbridge Fire Co. was organized in 1923, and built a new fire house in 1964. A new pump was acquired in 1972, a new tank truck in 1974, and a new ambulance in 1975 as well as a 1958 Reo pumper. There are more than 160 members. **Officers include:** Pres., - Wm. Mundorff, Vice Pres., - Charles Drescher, Treasurer - Elwood Smith, Secretary - Cal. Garman, Fire Chief - Earl Fuhrman, Ass't. Chief - Wm. Smith, and Chief Engineer - D. Ginder.

## Florin Fire Co.

The Florin Fire Company Inc., was organized September 29, 1947 and was incorporated in 1948. The first firehouse which is still standing was built in 1948 and then in 1968 a new firehouse was built to replace the old firehouse. The first fire engine which the company had was a 160 gallon boyer fire apparatus mounted on a 1 1/2 ton Brockway truck. In 1949 a new American LaFrance 500 GMP pumper with a 500 gallon booster tank was purchased. In 1956 a White squad truck was purchased from the Citizens' Hose and Fire Company, New Cumberland, Pa.

The present day equipment includes a 1972 Diamond Reo pumper 750 GPM with a 1350 gallon booster tank, a 1949 Mack pumper 750 GPM with a 700 gallon booster tank, a 1952 White tank with 1300 gallon tank, a 1970 Dodge rescue and squad truck which carries a portable generator, portable

pump, 2 asbestos suits, 2 air masks, an all-purpose saw, and air tanks. **Officers of the Co. are:** Pres., - Carl Coen, Secretary - Charles Eshleman, Treasurer - Franklin Geib, Financial Secretary - Barry Leber.

**Line Chiefs -** Fire Chief - John Geltmacher, 1st Ass't. Chief - Barry Leber, 2nd Ass't. Chief - Dwayne Caswell, Chief Hoseman - Ronald Eberly, Chief Chemicalman - William Ober, Chief Engineer - James Grubb, Chief Ladderman -

Randy Myers.

**Ladies Auxiliary members include:** Pres., - Brenda Coen, Vice Pres., - Mary Jane Stoudt, Secretary - Fern Ney, Corres. Secretary - Sandy Kirkpatrick, Treasurer - Helen Mateer.

Photo by James E. Beck



## YOUNDT'S MEAT MARKET

119 E. Market St., Marietta - 426-1245

Open Daily 9 a.m. to 8 p.m.

NEW SANDWICH

**THE BUTCHER BOY**

only \$1.15

*Chateau Art*  
Children & Adult  
Instruction  
426-1829

Classes Start Nov. 1st

**Buy Only One  
More Muffler!**

FREE REPLACEMENTS  
FOR LIFE OF CAR

(Labor not included)

**WISSLER MOTORS**

Route 230 West  
Mount Joy, Pa.

**COLUMBIA  
FACTORY  
OUTLET  
BED  
SPREADS  
DRAPES**

LINCOLN HI-WAY 1/2 MILE EAST OF  
COLUMBIA TURN SOUTH ON OSWEGO DRIVE

**SAVE 20%-50%**

DAILY 9-6, FRI. 9-9, SAT. 9-5  
(684-6341)

## The DODGE BOYS

DISCOUNTING \$200 to \$1,000 OFF  
NEW CARS & TRUCKS IN STOCK

'70 CHEVY EL CAMINO  
GMC "Jimmy" 4 wheel drive

**PETTICOFFER DODGE, INC.**

PH: 367-1808  
Route 230 East, Next to Shopping Center  
Elizabethtown, Pa.



"I haul cancelled store orders,  
odd discontinued items and  
samples from Carolina factories  
to a warehouse outlet in Mt.  
Joy." "NO SECONDS" "Priced  
just above nice used things."

*Don Surpe*

BROWSING  
HOURS

Weekdays  
1-9

Saturday  
1-6

**FACTORY  
MISTAKES  
FURNITURE**

17 New Haven Street Mt. Joy, Pa.

**Battery power  
is better**

20% off on the  
purchase of any  
model until  
November 30, 1975

**ELECTRIC TRACTORS  
FROM AVCO NEW IDEA**

See it at:

**BRANDT'S MOWER SHOP**

Donegal Springs Rd., R. D. 1, Mount Joy, Pa.  
PHONE 653-5795

