

Ralph M. Snyder
R. D. 2
Mount Joy, Pa.

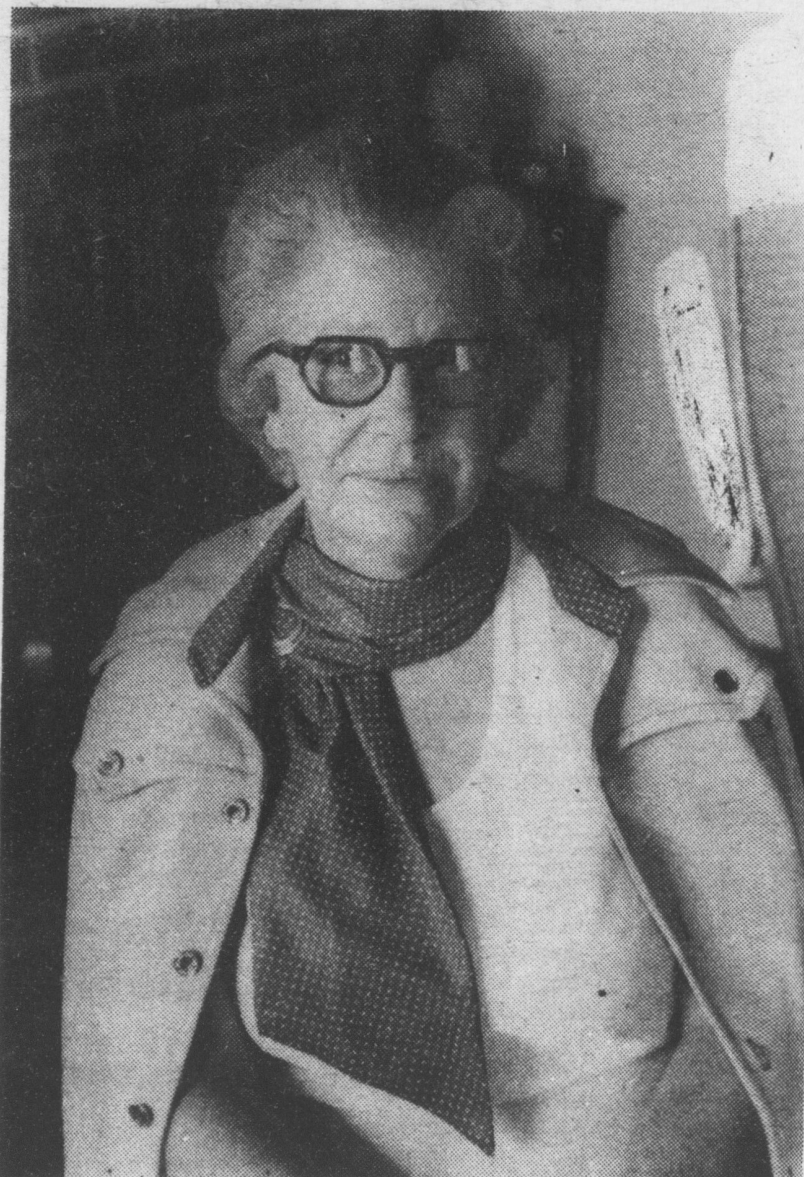
SUSQUEHANNA BULLETIN

Susquehanna Times & The Mount Joy Bulletin
MARIETTA & MOUNT JOY, PA.

Vol. 75 No. 27 July 16, 1975

Ten Cents

Lucy Haines wins her long fight for a safer bridge at edge of town



Mrs. Lucy Haines

Mrs. Lucy Haines, who has been fighting single-handedly for a safer bridge at the eastern end of Main St., Mount Joy - is succeeding.

On July 9, Mrs. Haines, Mayor Gingrich, Borough Manager Bateman, and Engineer Gohn met with Michael Hagerty, supervising engineer, Si Williams, and Bruce Bigelow, Penn Dot.

It was agreed to construct a seven foot walkway or cartway on the south side of the bridge. (Mrs. Haines would have preferred it on the north side.)

Before work can begin, a committee from the borough must approve the plans.

Money will be provided by the state or by the federal government.

Mrs. Haines stated that a photograph taken by the *Susquehanna Bulletin* - showing two nervous boys on a bicycle crossing the bridge simultaneously with a truck, and an oncoming car approaching - was convincing to state authorities and "said it all."

See editorial on page 13.



Left to right: Rapho supervisors Shellenberger, Shenk, Siegrist, and Mount Joy Borough Manager Bateman

Mount Joy asks Rapho Township to contribute more to fire co's.

Last Thursday evening Mount Joy Borough Manager Joseph Bateman and Councilman James Heisey asked the supervisor of Rapho Township to contribute \$3135 next year to help support the two fire companies in Mount Joy, Florin, and Friendship Companies.

The request was based on a study of the fire companies

services and income for the past five years, 1970-74. The study showed that 21 per cent of all calls answered by the two fire companies were in Rapho Township, but that the Township government has been contributing only 2.6 percent of the monies provided by local governments to help support the companies.

In contrast, Mount Joy Borough has been contributing 94.8 per cent of all public contributions, although only 49 per cent of the fire calls were within the borough.

The \$3135 requested from the Rapho supervisors represents the percentage of total public monies as the percentage of calls within Rapho Township.

In the past 5 years Mount Joy has contributed \$68,714 to the fire companies; Rapho, \$1900.

Bateman stated that he considered it fair and equitable that Rapho Township should contribute to the

companies commensurate with the protection provided by the Township.

The study carried out by the borough estimates that West Donegal Township's annual share of public support of the fire companies is \$1,455, and Mount Joy Township's is \$1260.

Nine per cent of the fire companies' calls were in East Donegal Township, although the township has contributed only \$100 compared to \$68,714 by Mount Joy.

Eight per cent of the calls were in Mount Joy Township, although the township has contributed only 2 per cent (\$1,775) to help support the companies.

President Douglas Estock of Friendship Fire Company told the Rapho supervisors that his company was well content with the contributions of Rapho Township to the company, and that the company would continue to answer calls in Rapho, even if the supervisors decided not to contribute more to support the fire companies.

Pres. Douglas Estock of Friendship Fire Co. is satisfied with Rapho support of fire co's.

Douglas L. Estock, President of the Friendship Fire Co., Mount Joy, is quite satisfied with the money contributions made by citizens of Rapho Township to support the fire company.

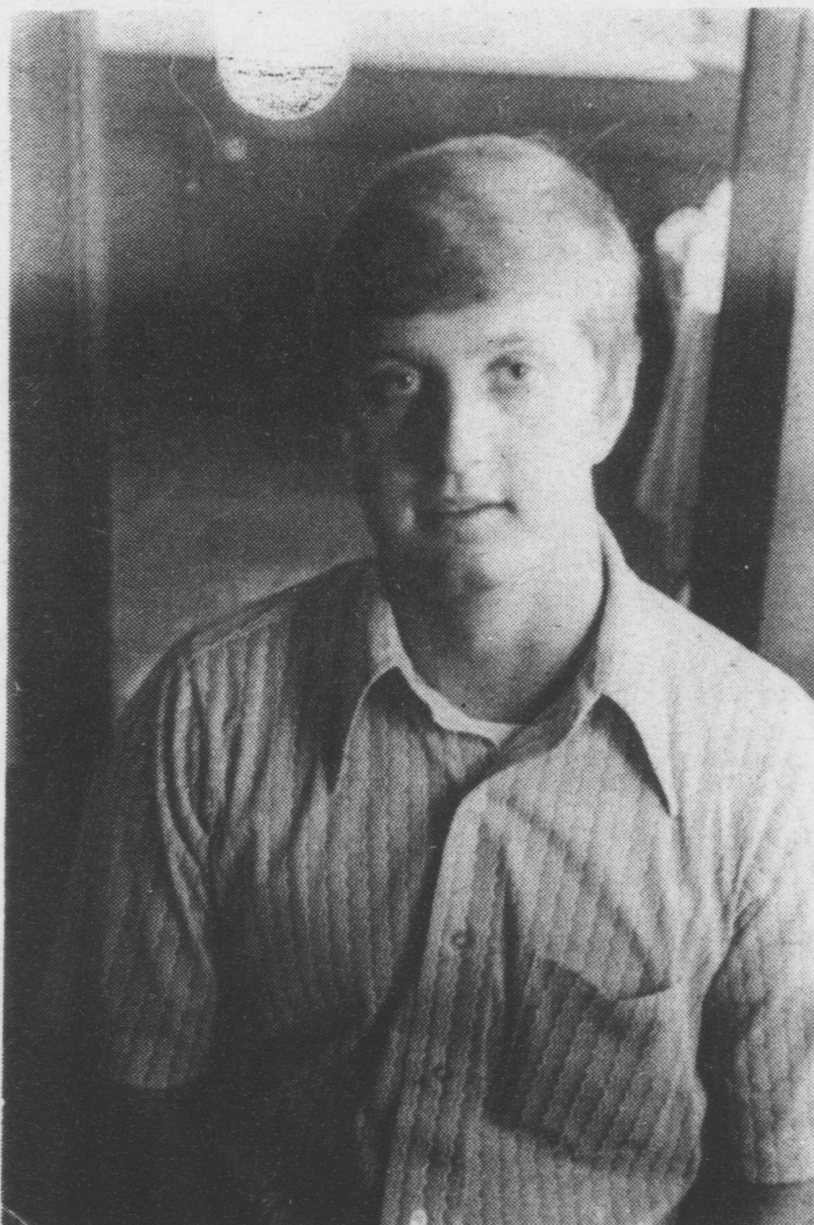
He points out that Friendship Fire Co. receives most of its income from the contributions of private citizens, not from the municipalities. Approximately \$24,000 is contributed by individuals (\$15,000 from bingo games), as compared with about \$9,700 from the municipalities (\$9,000 from Mount Joy Borough).

Estock estimates that 50 per cent of the private contributions come from Rapho Township.

If the Rapho Township supervisors would agree to contribute up to \$3135 the borough is asking for, the fire companies would not receive this money. Estock says that the money would be paid to the borough which would continue to contribute the same amount as present \$9,000.

If the taxes had to be increased in Rapho to pay for the township's contribution, individual residents might contribute less. The fire company might end up losing income if the borough's plan is accepted.

Estock also states that a majority of calls in Rapho Township are on Route 283, not really the township's responsibility.



Douglas Estock

FIRE CALLS TO AND MONEY CONTRIBUTED BY MUNICIPALITIES TO FRIENDSHIP & FLORIN CO'S.

	Fire Calls	Money Contributed
	%	%
Mount Joy Boro	49	95
Rapho Twp.	21	3
East Donegal Twp.	9	0
Mount Joy Twp.	8	2