

(continued from page 1)

Across Little Chiques lies lower Rapho Twp.

But Hallgren foresees many problems if the proposed move becomes reality.

Both Beahm Junior High School and Donegal High School are overcrowded at present, without additional students from lower Rapho. Beahm has 50 more students, Donegal High 150 more than their proper

capacities. Moreover, the high school cannot legally be enlarged because it lacks access to public sewage. Hallgren said he didn't know where the district could put additional junior and senior high school students.

Elementary school pupils from lower Rapho would

probably have to be sent to Riverview School near Marietta, because there is no room in the Mount Joy elementary schools.

Hallgren said there would be problems in transferring credits from Manheim to Donegal schools, also in deciding what to do with seniors who preferred fin-

ishing school at Manheim Central.

New bus contract would be necessary for transporting children from lower Rapho.

Perhaps most complicated of all, would be determining new fair tax rates for residents of lower Rapho and also for the Donegal School District.



Dam near Baker's Cafe



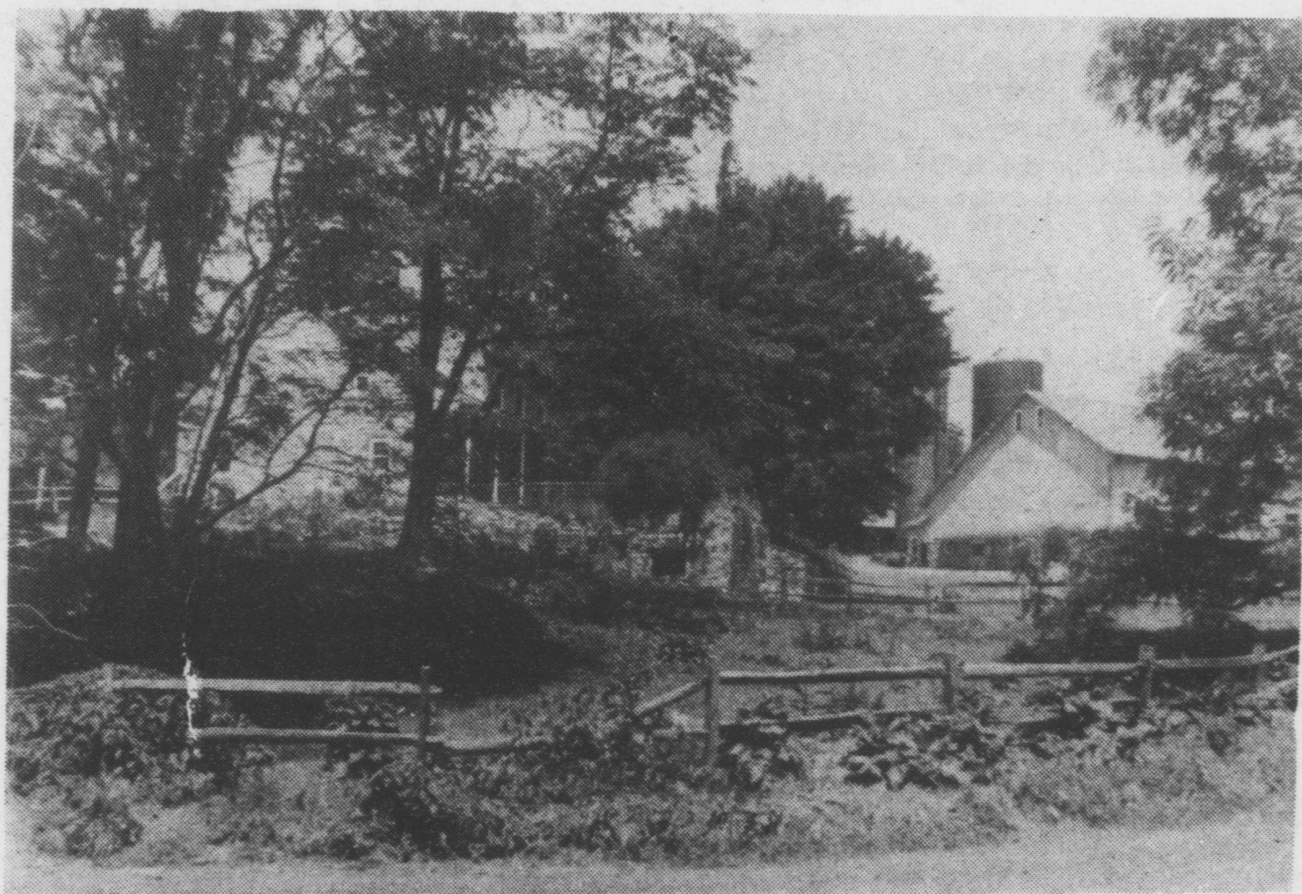
Where Donegal meets Rapho: Stonebridge over Little Chiques



Bovine inhabitants of lower Rapho



Rolling Hills Estates



Farms still predominate countryside

