

GET YOUR GARDEN NEEDS HERE:
 Seeds, vegetable, and flower plants.
**SPECIAL AGAIN ON SPANISH SWEET
 ONION PLANTS-- Reg. 59c a bunch-
 NOW 3/\$1.00**

try our FROSTY ACRES frozen
 beef patties and frozen vegetables

Celery-3 stalks for 95c- fresh home grown
 asparagus 82c a pound



**A-TREAT SOFT DRINKS-6 QUARTS FOR
 \$1.89+TAX AND DEPOSIT**

5 lb. Broken Weges Pretzles--\$3.10

Our own farm fresh eggs and homemade
SHOOFLY PIES

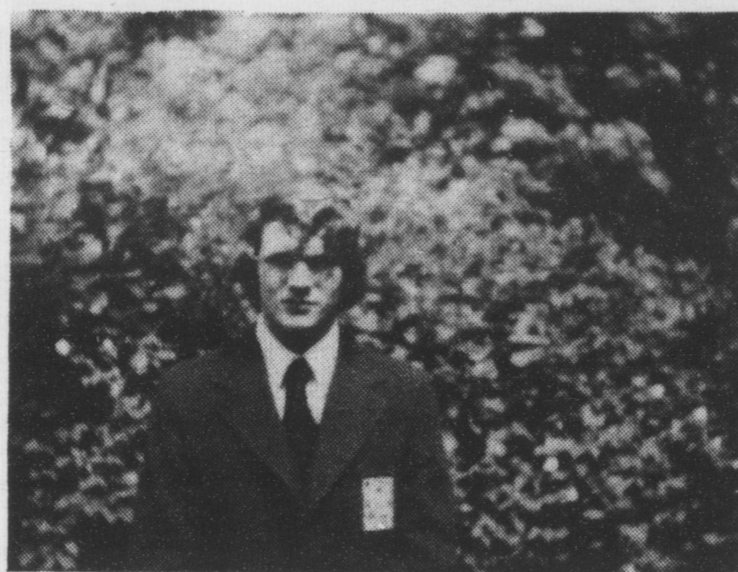
Savings for you -we package produce in
 large economy sizes.

FAST, FRIENDLY SERVICE

WOLGEMUTH FRUIT MKT.

¼ mile West of Mount Joy, along Route 230 Ph. 653-5661

HOURS: Daily 8 a.m. to 6 p.m.; Fri. 8 a.m. to 9 p.m.



Michael Carroll

Carroll inducted as president

Michael Carroll, son of Mr. and Mrs. Robert Carroll of East Market St., Marietta and a sophomore at Donegal High School was inducted as president of the morning session of the Mount Joy Vo

Tech School during the fifth annual Recognition Banquet activities.

Ted Shellenberger, son of Ted Shellenberger, Rivermoor, Marietta, was also inducted as a reporter.

**COLUMBIA
 FACTORY OUTLET
 BEDSPREADS
 DRAPERIES**

LINCOLN HI-WAY ¼ MILE EAST OF COLUMBIA
 TURN SOUTH ON OSWEGO DRIVE
 (684-6341) DAILY 9-6, FRI. 9-9, SAT. 9-5

SAVE 20% TO 50%

STEHMAN'S LAUNDROMAT

"Area's Most Unusual Center"

ORANGE ST. MOUNT JOY, PA.

Newly Remodeled Air Conditioned

Hours 7-11, 7 Days a Week



**WE DID
 IT!**

Yes, through our new ads in this paper, Don Swope cleared out his back room to make space for a complete Early American line. In fact, he's now got so much space, he's converted one room into a Chair Shoppe. A room of chairs, a large floor of Early American, and one with Factory Mistakes. We're three stores in one now!! **NO SALESMEN EMPLOYED!**

BROWSING HOURS

Weekdays 1 - 9
 Saturday 1 - 6



MERRILL J. HESS
CONTRACTOR with 15 years experience

LOOKING FOR SMALL JOBS

SATISFACTION GUARANTEED
 LOW PRICE, HIGH QUALITY ONLY

- BUILDING
- REMODELING
- ROOFING, SPOUTING
- ALUMINUM SIDING
- ADDITIONS

Call for **FREE** estimates after 4 p.m. 653-2308

For Sale

1973 Ridgewood Mobile
 2 BR, air conditioner, 65'
 x12'. Close to Armstrong.
 Lease purchase available.

REDUCED TO ONLY

\$5800

Call
STANLEY M. WENTZEL
 Realtor
 394-3763
 Ask for Bill Page

FOR SALE

by owner

Drager Road, East Donegal Twp. Bank barn on 10 acres of ground. This picturesque country setting features open areas, some woods, creek frontage, 50 fruit trees & hard road frontage. Ideal country home site, camp site, place to raise horses, or just use your own imagination.

A REAL BUY at \$27,500

Please phone 684-2589 after 6 p.m. for appointment to view this property.

Census Notice

Saint Mary's Catholic Church

Volunteers will call May 27, 28, 29 and 30th. Any Catholic missed call 653-4657.

AREA

Mount Joy — Florin Ward
 Mount Joy R. D. #1
 Mount Joy R. D. #2

**ARE YOU
 PLANNING TO
 BUY A CENTRAL
 AIR CONDITIONING
 SYSTEM?**

Let me evaluate your
 needs and give you
 my recommendations
 and estimate... free.

PHONE 426-1836



*Rheem is the registered trademark of the Rheem Manufacturing Company.

**R.V. RICHARDS
 & SONS**

COLUMBIA R. D. 1

"Call us to do your work"

**Do You Have a Home
 Built in the
 1700's or 1800's —**

**farm house,
 town house
 or estate?**

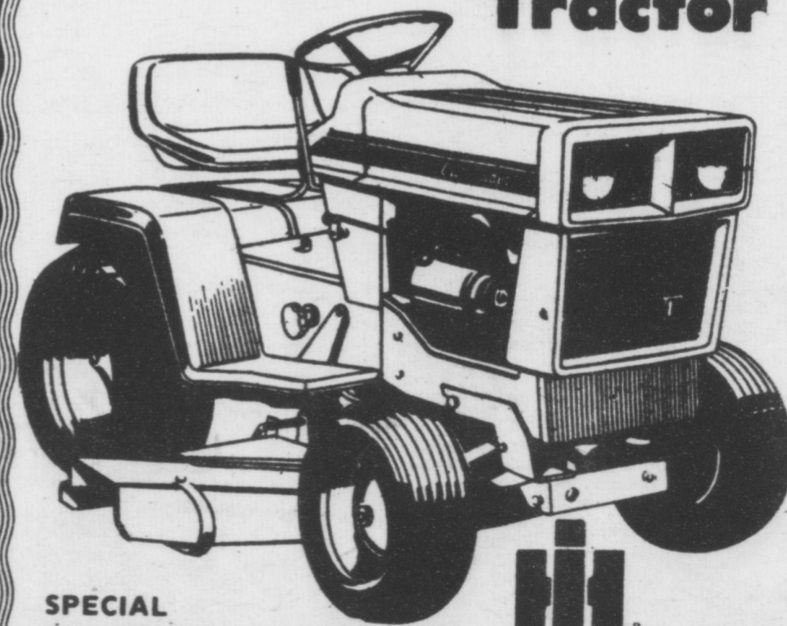
We would like to advertise it for you in national circulation newspapers and publications like Antique Magazine, directed at exclusive clients who can bring you top value.

**ENGLE-HAMBRIGHT & DAVIES,
 INC.**

Real Estate

115 E. King St. Lancaster, Pa.
 Phone 394-5681 Ask for Bob McMurtrie

**FREE MOWER
 WITH PURCHASE OF A NEW
 Cadet® Lawn
 Tractor**



SPECIAL PRICES ON 1974 MODELS **INTERNATIONAL HARVESTER**

OUTDOOR POWER PRODUCTS

**GOOD SELECTION USED LAWN
 AND GARDEN EQUIPMENT**

Messick Farm Equipment, Inc.

2750 N. Market St., Elizabethtown, Pa.

Office 367-1439 367-1319 367-6039