

Over The Back Fence



By Max Smith

STATE FARM Show is just around the corner and all livestock exhibitors should be getting their animals prepared to meet health regulations. Various tests and injections are required for the protection of the show animals as well as the rest of the herd or flock. Your local veterinarian is qualified to administer these treatments and properly prepare each animal. A good job of fitting and showing is also very much in order if the animals are going to be able to meet the keen competition. Premium Lists should be consulted for full details and Show Pro-

grams are now available giving the schedule for all events. Many meetings and banquets are held during Show week and are worthy of attention.

THE OUTLOOK for agriculture in the next year is always a good subject at this time of the season. Our economists at Penn State report outputs of livestock and livestock products are high and expected to be large at least for the first half of 1971; this may prevent prices from improving to the producer. Crop supplies seem to be closer to the needs with more favorable prices. Demand for farm products has been very strong and prospects indicate that the demand will get stronger in 1971 as the general economy slowly improves. Net income will probably not be as great in 1971 because of the lower market values of livestock. Good management in order to get efficient production will be needed in all farm enterprises.

I HAVE already heard the first "groaning and moaning" from some of my non-farm friends because of the recent snow and ice. One of the best things that could happen to our good earth one of these days would be to get a snow cover that would remain on the ground for the most severe part of our winter. Snow is protection for all plants and vegetative growth; it keeps plant roots from drying out and from being injured by alternate freezing and thawing; also any snow cover is a source of soil moisture when it melts. Bare ground and zero weather with strong winds is very hard on many crops and on trees and shrubs; winter killing is usually more severe without snow cover during cold weather.

TO GET what you want these days in the proper amounts may take considerable planning and the ordering of supplies several months in advance of the time of need. I am referring to the ordering of legume seeds for the

Rotary Hears About Bridge

Bridge—for those who play the game and for those who are interested in knowing why other people are excited about it—was the subject of the program Tuesday noon, Jan. 5, at the luncheon meeting program of the Mount Joy Rotary club.

Held at Hostetters, the program featured a discussion of the game by R. F. Hallgren and Dr. David Schlosser, both of whom are long-time bridge playing hobbyists.

Hallgren spoke about the fundamentals of the game, pointing out the advantages of bridge to fill leisure time, for retired people, as a men-

tal challenge and as a common meeting on an intellectual level for all ages and both sexes.

It is a game of "patience, concentration and tolerance," he said.

Dr. Schlosser, one of the outstanding players of the area, talked about tournament bridge and how a player reaches the pinnacle of bridge recognition by becoming a Life Master, recognized by experts around the world.

He discussed tournament play at local, sectional, regional, national and international levels and how duplicate hands are played.

COMPLETES COURSE

Army Second Lieutenant Kenneth E. Weber, 20, son of Mrs. Ida A. Weber, 45 East Main Street, recently completed a 16-week helicopter pilot course at the U. S. Army Primary Helicopter School, Ft. Wolters, Texas.

During the course, he was trained to fly army helicopters and learned to use them in tactical maneuvers.

He next will undergo advanced flight training at the U. S. Army Aviation School, Ft. Rucker, Ala.

Lt. Weber entered the Army in August 1969 and was stationed at Ft. Sill, Okla.

The Lieutenant's wife, Connie, lives on Route 3, Mineral Wells, Texas.

P.P.&L. Says Plenty of Power

Pennsylvania Power & Light Company is assuring its customers there will be plenty of fuel for PP&L power plants this winter, at the same time inviting them to join the company in an effort to avoid the waste of energy resources.

The message, being delivered with electric service bills, responds to reports of serious national and regional fuel shortages. It points out that while PP&L has ample fuel reserves for the winter, "PP&L and other electric utilities are interconnected to give customers the economy and reliability of instant backup power — sometimes from as far away as Canada and the Midwest. It is possible, therefore, for PP&L to be affected if critical energy supply problems should develop elsewhere."

For this reason, the Company urges "that we all do everything we can not to waste our primary energy resources." The message is accompanied by a check-list which homeowners and businessmen use to avoid waste of energy. It ties in with suggestions made recently by the Edison Electric Institute to Mrs. Virginia Knauer, President Nixon's advisor on consumer affairs.

PP&L also tells of some of its own efforts over the years to reduce waste and assure ample fuel supplies. These include heavy investment in new equipment which in the past 10 years has reduced by 20 per cent the amount of coal needed to produce a kilowatt hour; pioneering moves within the industry to own its own coal trains to speed back and forth from mine to power plant; purchase and management of its own coal mines and long-term contracts made years ago.

Officers Planning Jaycee Week

Final plans for the annual Jaycee week activities were prepared at their monthly board meeting, held at the home of President Andy Reyer Tuesday evening, June 5. Twelve men were present.

Ron Hawthorne reported on the Christmas wrapping sales.

Apple Butter Sunday on March 28 is being planned by the state Jaycees and Mount Joy is cooperating in the event again this year, by selling jars of apple butter. The Jaycees send over 2,000 retarded youngsters to camp during the summer.

Larry Gainer and Bob Eshleman completed the Shopping Tour for the Messiah Children's home. About fifteen men helped make the event successful.

Read the Classifieds Use the Classifieds

spring planting. Certain varieties of alfalfa and red clover may not be available if the growers wait until March to place their orders. I'd suggest that growers evaluate their needs soon and place their orders. Adapted and high-producing strains will increase yields and give you greater output per acre. The inputs may be the same if less desirable seeds have to be planted. The straight seeding of alfalfa in the early spring without a nurse crop has given good results and gets my vote for the best method of establishing a new stand of the "Queen of the Forage Crops" — alfalfa.

FREE access to salt and minerals at all times is still a sound recommendation to every livestock producer. This should be in addition to any materials mixed with the grain ration. The salt should be loose rather than in a block; this will encourage greater consumption which helps to increase water consumption and more efficient gains. Both the salt and minerals should be under roof in order to keep them dry. Efficient production is a must at this time and adequate salt and minerals will help.

Many Using Phone Devotions

The telephone devotional program "Strength for Today," which is sponsored by the First Presbyterian church, has had much success.

People from Mt. Joy and surrounding communities have written or called to express their gratitude for the messages.

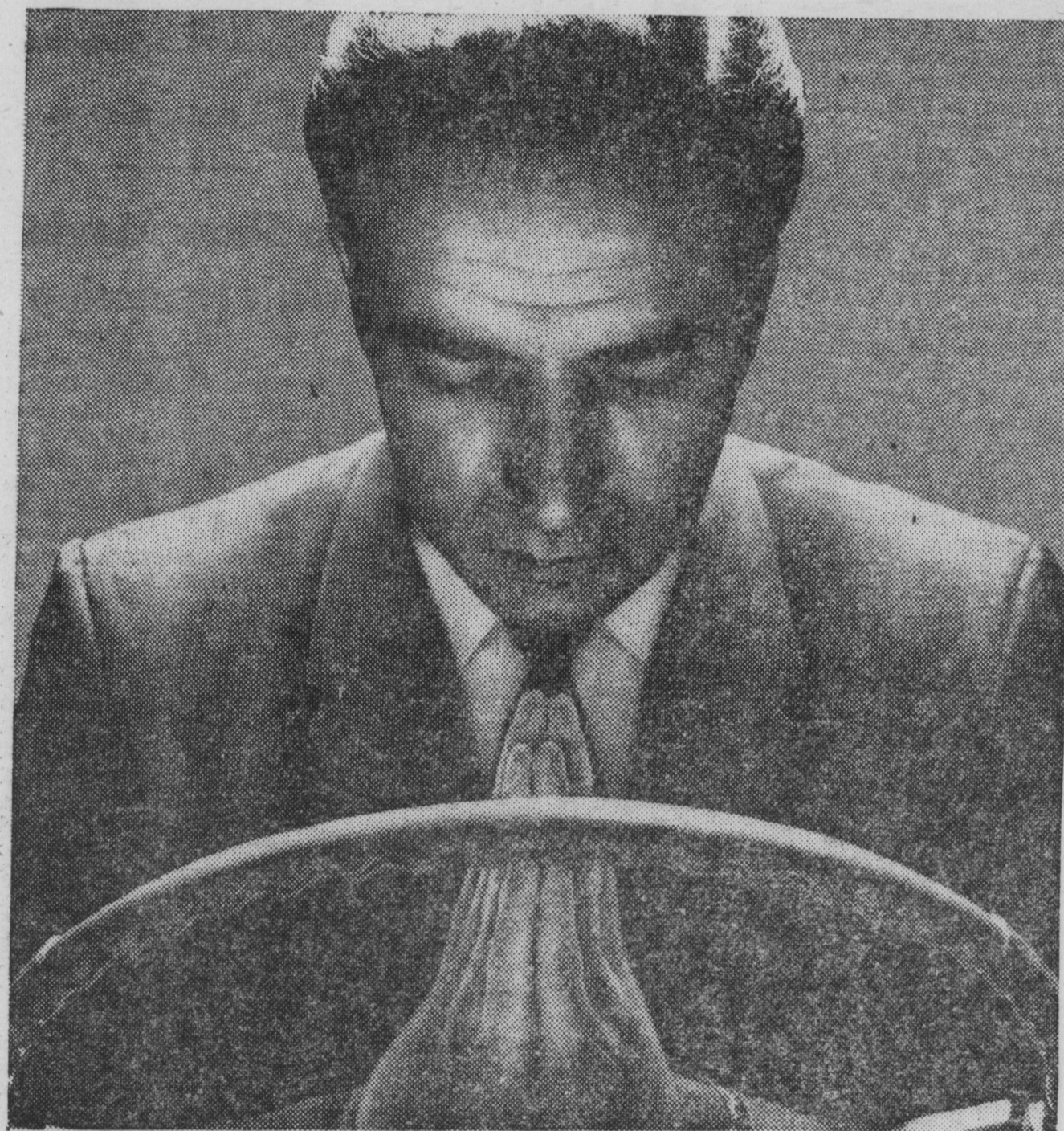
During the month of January, the messages will center on the Book of Psalms. For hundreds of years, people have received spiritual strength through the revelation of God's help in the Psalmist's life. It is hoped that when you call 653-5888, you, too, will find that these messages help in your life.

Fill Cracks And Holes Better

Handles like putty. Hardens like wood.

PLASTIC WOOD®

The Genuine - Accept No Substitute.



We thank Thee for the ability to travel from one place to another, faster than our legs can carry us. And realize our responsibility to do so without injuring a fellow human being.

Maybe we all ought to say Grace—before driving.

Free: Send for wallet size Grace Card, Room 301, Finance Building, Harrisburg, Pa.

COMMONWEALTH OF PENNSYLVANIA

Raymond P. Shafer Governor Warner M. Depuy Secretary of Revenue Harry H. Brainerd Commissioner of Traffic Safety