

A LARGE DRY-SAW (ackground) takestion this Spring. In this area of the plant, shape in the board mill of Armstrong's newmineral fiber board will receive its first cut, mineral fiber ceiling plant at Marietta, as thting after passing through the dryer. e plant prepares for the start-up of produc-

● Amrstrong

(From page 1)

"strong" group and he sees nothing but success.

To that group of people, plus office employees, production workers of all kinds will be added at once.

They will be recruited from the immediate area. Betty said that a lot of people are going to have a wonderful opportunity to start at the beginning with the new organization and that they can look to the futtre with expectancy.

Use Four Warehouses

Four of the big warehouse buildings which people of this area long have considered to be part of the landscape will be used — two for manufacturing and two for warehousing.

A tremendous amount of renovation, has been done, Betty told the touring newsmen, who were the first to visit the facility, other than Armstrong officials.

In one building, for instance, a tremendous amount of excavation was necessary to provide sufficient vertical space for machinery needed at the head end of the manufacturing line.

Betty said that "in excess of \$10 million has been expended by Armstrong to start the plant. And, he emphasized the words "in excess."

It is the largest single capital expenditure ever made by Armstrong Cork company.

Basic Material

Already the basic material — mineral wool, a product made from steel mill slag, similar to the well-known fiber used for insulating—is being readied for shipment from Birmingham, Ala. Within a few days a ship will dock at Baltimore and another basic ingredient—starch—will arrive from Thailand.

Production workers will be exclusively men in the plant, which actually is highly automated.

Heart of the manufacturing plant is a tremendous, specially built machine from Scotland which in effect is a paper manufacturing behemoth.

Fed into it will be wool fiber, plus the starch and "dabs of this and dabs of that" which manager Betty was not inclined to identify. Using large quantities of water from its own on-site wells, the material is formed into sheets 3/8 inch thick. Made in a continuing flat sheet, water jets and saws reduce the material step by step, pass it through a tremendous drying oven and

finally send it into the finishing department for painting, surfacing and sizing.

No Waste

Not one shred of material is wasted as offcuts and damaged pieces are fed back into the machine for salvage.

Although tremendous amounts of water are used, even that commodity is reclaimed, cleaned and reused.

No pollution — none of any kind—is placed into the nearby river or thrown into the air. Ultra modern means of controlling such things have been built into the plant from the very beginning, including design of sanitary sewers to connect to the new Marietta-East Donegal system.

Breaks Bottleneck

The Marietta plant is being built to break a bottleneck in production of Armstrong's ceiling plant at Pensacola, Fla. So successful has been the promotion of the ceiling use that the southern plant is far behind in its schedule. And, Armstrong people see no decline in the rate of increase which the sales have had.

Manager Betty said this week that a "open house" is expected to be held later, as the plant gets itself established and ready for such an event.

The "board mill", which is the heart of the produ-

ction, will work on a 24-hr. per day basis, employees operating on swing shifts.

The ceiling, used widely in such installations as hospitals, public buildings of all kinds, commercial buildings, stores, offices etc. is a fireproof material. It will be made in four different surface treatments and in sizes 2'x4', 2'x3' and 2'x2'.

HOSPITAL AUXILIARY

The Landisville - Salunga Auxiliary to the General hospital will hold a meeting on Monday, Jan. 26 at 8:30 p.m. at Zion Lutheran church, Landisville. Dr. John Cavanaugh will be the guest speaker and his topic will be "Astronomy".

Mrs. Charles Elliott and Mrs. Jack Bidding, program co-chairman of the Auxiliary will detail plans for the "work" meeting to be held in March. The March meeting with emphasis on service to the hospital will benefit the Children' Ward of the hospital.

Mrs. Robert Brackbill, hospitality chairman, announced that the hostesses for the evening will be four past presidents of the Landisville-Salunga Auxiliary, Mrs. Harry Hoffman, Mrs. Benjamin Stoner, Mrs. Richard Nissley and Mrs. Matthew Harrison. President of the Landisville - Salunga Auxiliary is Mrs. Richard Bryson.

Prayer Of The Week

The prayer this week is by Simon Patrick:

"Almighty and most merciful Father, in whom we live and move and have our being, to whose tender compassion we owe our safety in days past, together with all the comforts of this present life, and the hopes of that which is to come; we praise Thee, O God, our Creator; unto Thee do we give thanks, O God, our exceeding Joy, who daily pourest Thy benefits upon us.

"Grant, we beseech Thee, that Jesus our Lord, the Hope of glory, may be formed in us, in all humility, meekness, patience, contentedness, and absolute surrender of our souls and bodies to Thy holy will and pleasure. Leave us not, nor forsake us, O Father, but conduct us safe through all changes of our condition here, in an unchangeable love to Thee, and in holy tranquility of mind in Thy love to us, till we come to dwell with Thee, and rejoice in Thee forever. Amen."

Sweetheart Photo Contest

Children ages 0 to three the VFW home. The King and Queen each will receive entered in the Mount Joy Joy-a savings bond, courtesy of cee-ettes' Sweetheart King the Mount Joy Joycee-ettes. and Queen photo contest, it All proceeds go to Donegal Dental Clinic.

Youngsters, too, must live at a Mount Joy mailing address.

Photographs will be displayed in stores of local merchants, beginning Jan. 30. Voting will be "Penny-A-Vote" and the boy and girl with the most votes will be crowned Sweetheart King and Queen on Feb. 14 at Joy, Pa.

To Consider Reservoir

Manheim Borough Council, at its Jan. 27 meeting, will consider construction of a one and one-half million gallon water storage facility on the Chiques Creek.

The dam would control flooding such as the borough experienced last summer during heavy rains and would assure the borough an adequate water supply for the future.

Councilman Frederick Senderfer met last November with officials from the Departments of Soil Conservations and Forests and Waters and reported the dam would cost around \$1.5 million. Manheim would be responsible for \$200,000 of the cost, with state, federal and county funds paying the remain-

der, he said. Construction would start in 1974 and take about ten years to complete. Initial payments on the project would not be due until the dam was finished in 1984 with a maximum of 40 years complete payment. Councilmen have asked residents of Manheim to express their feelings by writing to the borough office before next meeting.

SPRING PLANTING

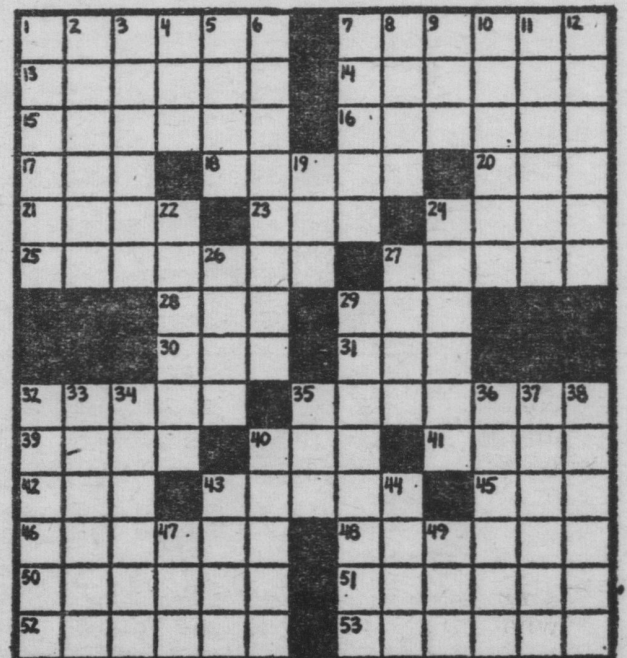
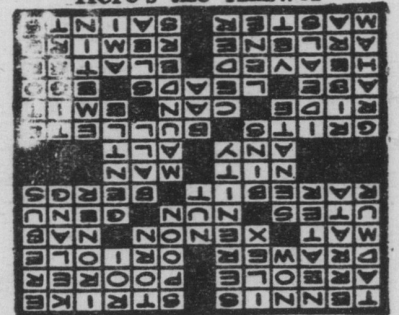
It is not too soon to think about spring planting — even though the earth is covered with snow, remind extension garden specialists at Penn State. Now is a good time to order seed and plants.

WEEKLY CROSSWORD PUZZLE

Sports and Sportsmen

- HORIZONTAL
- 1 Gussie Moran's sport
- 7 Bowling term
- 13 Interstice
- 14 Needler
- 15 Sliding compartment
- 16 Bird
- 17 Used in wrestling
- 18 Gaseous element
- 20 Catch (coll.)
- 21 Shoshonean Indians
- 23 Sister
- 24 The knee
- 25 Cheese dish
- 27 Icebergs
- 28 Insect egg
- 29 Chess piece
- 30 Some
- 31 High (music)
- 32 Coarse hominy
- 35 Used in hunting
- 39 Polo players
- 40 Is able
- 41 Give forth
- 42 His sport was rail-splitting
- 43 Heads
- 45 Self-esteem
- 46 Hoisted
- 48 Click beetle
- 50 Feminine appellation
- 51 Bog down again
- 52 Become adept in
- 53 Holy persons
- VERTICAL
- 1 Palmyra (Bib.)
- 2 Printing mistakes
- 3 Tidier
- 4 At this time
- 5 Holm oak
- 6 Calmness
- 7 Golf club
- 8 Rent
- 9 King (Fr.)
- 10 Laundry machine
- 11 Malayan city
- 12 Place of utter darkness
- 19 Woody fruit
- 22 Legislative body
- 24 Mild
- 28 Containers
- 27 Used in many sports
- 29 Rambles aimlessly
- 32 Pro quarterback, Otto
- 33 Spanish painter
- 34 Standards
- 35 Sheep's cry
- 36 Ipecac compound
- 37 American educator
- 38 Shops
- 40 One who grants
- 43 Smooth and unspirated
- 44 Irish head
- 47 Race horse's doctor
- 49 French friend

Here's the Answer



"At least there's one thing to be said for her—she's deductible!"