

The Mount Joy BULLETIN

MOUNT JOY, PENNA.

Published Weekly on Wednesdays
Except Fourth of July Week and Christmas Week
(50 Issues Per Year)

11 EAST MAIN STREET, MOUNT JOY, PENNA., 17552
In the heart of fabulous Lancaster County.



Richard A. Rainbolt

Editor

and

Publisher

Subscription Rate - \$2.50 per year by mail.

Advertising Rates upon request.

Entered as the post office at Mount Joy, Penna., as second class mail under the Act of March 3, 1879.

• Deaths

HELEN E. GROSSER

Mrs. Helen E. Grosser, 76, of 2212 N. 45th St., Fort Pierce, Florida, died at the General hospital at 3:01 p. m. Wednesday, May 10, after a long illness.

She was the widow of Richard P. Grosser.

Mrs. Grosser was born in Leipzig, Germany. She resided in Fort Pierce for the past 11 years, and before that lived in Ozone Park, Long Island, N. Y.

She was a member of the Lutheran church.

Mrs. Grosser had come to Mount Joy to visit with her son-in-law and daughter, Mr. and Mrs. Gerald R. Zielke.

She is survived by two daughters, Eleanor A., wife of Gerald R. Zielke, Mount Joy, and Norman E., wife of Richard J. Sellman, Lancaster; two grandchildren, one great grandchild and a brother, Emil Freiberg, Muegin, Germany.

Funeral rites were held on Saturday, May 13, from the Heilig funeral home.

Returns to Local Dutch Pantry

Mrs. Edna K. Mumma has returned to the Dutch Pantry restaurant on Route 230, between Elizabethtown and Mount Joy, it is announced by Edwin S. Weber, Jr., executive vice-president of the Dutch Pantry chain.

Mrs. Mumma and her family operated the restaurant from 1948 until 1965. During the past two years, Dane Leister of Elizabethtown, has been the manager. Leister has been promoted to manage the company's new restaurant at Carlisle. The new operation is to be called "Kettle Kafe" and is scheduled to open the week of May 8.

Murphy Stores Show Sales Gain

G. C. Murphy company's earnings for the first quarter increased 47% on a sales gain of 7.8%, as reported by J. S. Mack, chairman of the board and president.

On March 31 the company had 508 stores compared with 513 the preceding March. New locations under contract totaled 38 compared with 21 a year ago. In the first quarter 2 stores were opened, 2 were closed and 1 was moved to a larger location.

• Main Street

(From page 1)

state Board of Education to determine whether Donegal School District or Manheim Central district is to receive the taxes which will be paid by National Cash Register company on the property and development at the east edge

a mile and a half south of the turnpike interchange is one of the most interesting.

As one views the property from the north, two colors of pinks spell out "HELLO," in big block letters that could be read for several hundred yards.

• Band Concert

(From page 1)

Presto, Beth Watto, Arthur Baughman and Delbert Flowers; and the well-publicized "Super Sour Six Minus One," which played several of its Little German band numbers during intermission.

Preceding the band concert, the ninth grade chorus of D.H.S. directed by Mrs. RoAnn Lau and accompanied by Jane Heilig and Elizabeth Watto, presented a four-number concert.

Organ music by Dwight Byers preceded the program.

Including the bevy of majorettes which performed briefly, more than 100 boys and girls participated with the band.

Announcer for the evening was David Brubaker.

AMP to Split Two for One

Shareholders of Harrisburg-based AMP Incorporated at their annual meeting last week approved a two-for-one split of the issued shares. The additional shares will be distributed about June 5th, 1967, to shareholders of record May 5.

Directors were reelected for the ensuing year. U. A. Whitaker, Chairman of the Board and S. S. Auchincloss, President, told shareholders

that sales and net income of AMP Incorporated, subsidiaries and Pamcor, Inc. (an affiliate) for the three months ended March 31, 1967 set new first quarter highs. Combined sales of \$38,376,793 set a new high for any quarter and were 10% ahead of the \$32,171,219 sales in the same period in 1966.

Combined net income for the March quarter this year reached \$3,566,699, equal to 59 cents per share on the 6,087,483 Endorsed Shares outstanding at the end of March. This was an increase of 10% over the \$3,233,559 or 53 cents per share earned on 6,076,430 Endorsed Shares in the March quarter last year.

They said that the lower rate of increase in net income was due principally to maintaining a level of general expenditures that was necessarily geared to the unusual quarter-to-quarter growth experienced by the company since late 1964. "While our sales increased sharply over the level of a year ago, the improvement over the last quarter of 1966 was not as great as we had expected."

The backlog of unfilled orders remained steady during the quarter, closing at \$30,000,000 at March 31, '67, compared to \$30,400,000 at year-end 1966 and \$27,500,000 at year-end 1965 and \$27,400 one year ago.

Capital expenditures for the first quarter were \$4.7 million and are expected to continue at a high level for the entire year. 1966 capital expenditures set a new high of \$17.1 million compared to the previous high of \$11.8 million in 1965.

Whoever one is, and wherever one is one is always in the wrong if one is rude.

For Survey Aid Asking Farmers

Farmers in the Mount Joy area are being asked to supply pertinent information about livestock in a survey starting May 20. Postmaster Elmer Zerphey has announced.

Cards will be delivered to farm mail boxes, selected at random on rural routes served by the Mount Joy Post Office.

These semi-annual surveys are conducted cooperatively each year by the Post Office and Agriculture Departments and serve as a basis for estimating numbers of livestock on farms; livestock production; the size of the pig, calf, lamb and wool crops; and the number of chickens raised. This information is of considerable importance to farmers, the livestock industry, industries serving agriculture, public agencies and the general public.

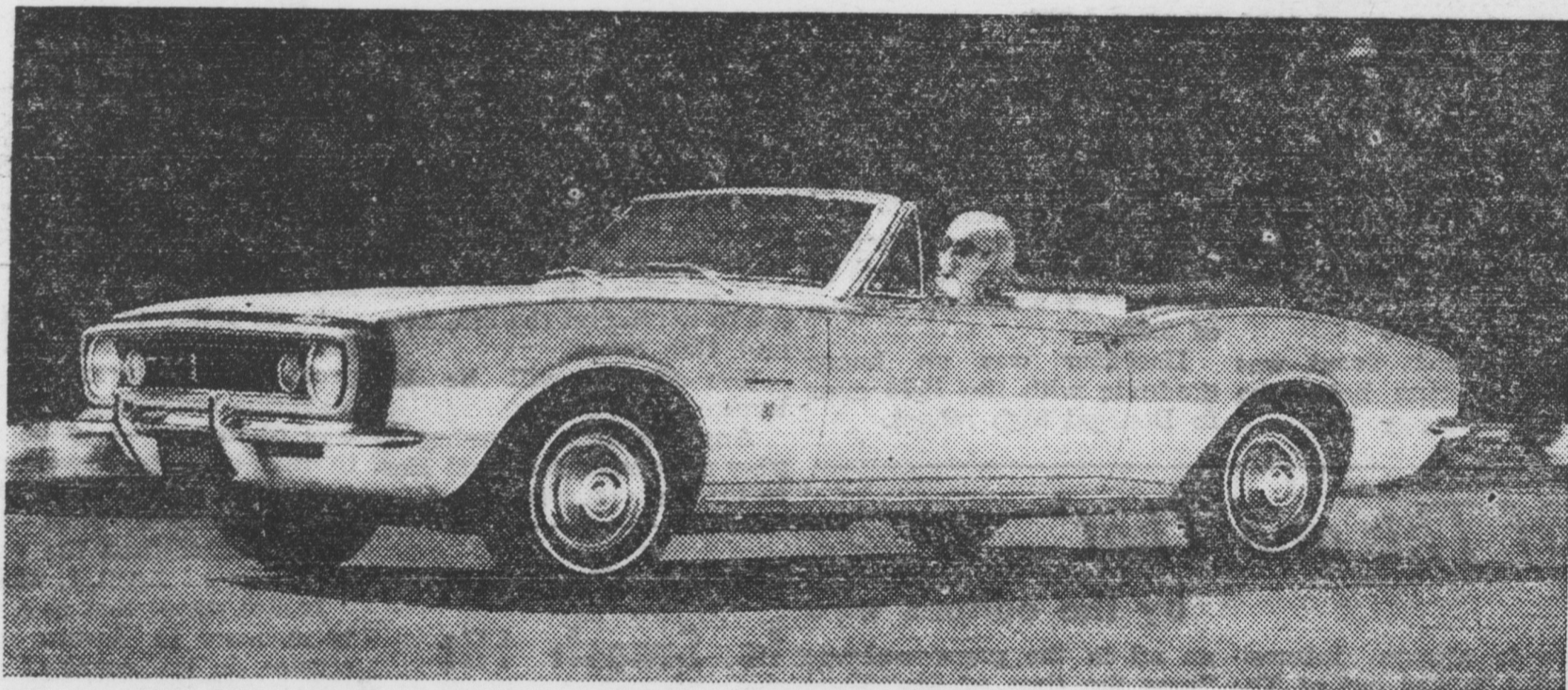
Farmers receiving survey cards have been urged to fill them out and return them promptly to mail carriers, Postmaster Zerphey said.

HONORED FOR SERVICE

Mr. and Mrs. David C. Witmer, Mount Joy R1, were honored by the State Hospital for Crippled Children at Elizabethtown at its semi-annual volunteer recognition program Tuesday night.

Mr. and Mrs. Witmer are the first couple to achieve over 200 hours of volunteer service. They are among some 200 volunteers who have served the hospital during the winter season, including students from Messiah College, Lancaster School of the Bible and Elizabethtown college.

Try Camaro—"The Hugger"



Camaro hugs a road closer, straightens a curve easier because it's the widest stance sportster at its price. It's lower, heavier, too...big-car solid and steady. You get a better ride, more precise handling for your money. Ask any Camaro owner, he'll tell you.

Now, during the Camaro Pacesetter Sale, you also get special savings on specially equipped sport coupes and convertibles. Save on all this: the 250-cu.-in. Six, whitewalls, wheel covers, bumper guards, wheel opening moldings, body striping, deluxe steering wheel, extra brightwork inside. And, at no extra cost during the Sale, get a floor shift for the 3-speed transmission and the sporty hood stripe! Compare Camaro. See your Chevrolet dealer now. (Sale savings, too, on specially equipped Fleetside pickups, Model CS10934.)



CAMARO

by Chevrolet



37-5770

NEWCOMER MOTORS, Inc.

West Main Street, Mount Joy

Phone OL 3-4821