

CHURCH NEWS

From page 8)
 9:30 a.m. Church School classes for adults, youth and children; Extended Sessions (2 hours) for all children thru Grade 5.
 7:30 p. m. Community Reformation Service, in Christ Church, United Church of Christ, the Rev. John W. Gosnell preaching.

Saint Mary's Roman Catholic Church
 Father Frederick J. Vaughn Pastor

Sunday
 8:00 a.m. Mass
 9:45 a.m. Sunday School.

God's Missionary Church Salunga, Penna.

Rev. John F. White, Pastor
 10:45 a.m. Morning Worship

7:00 p.m. Youth Meeting
 7:30 p.m. Revival hour

Tuesday
 7:30 p.m. Prayer Meeting and Bible Study.

Glossbrenner Church Evangelical United Brethren

Sunday
 9:30 a.m. Divine Worship

and Christian Instruction (Men's Day - Speaker: Dr. Robert Eerly).

5:45 p.m. Boy and Girl Fellowship.

7:30 p.m. "Mission to North America", Covenant Church, Lancaster.

8:30 p.m. Youth Fellowship Home Visitation.

Wednesday
 7:00 p.m. Midweek Service

Thursday
 7:30 p.m. Senior Choir rehearsal.

St. Luke's Episcopal Church Mount Joy
 The Rev. Donald H. Feick Rector

Saturday
 9:30 a.m. Jr. Confirmation Class.

Sunday
 21st Sunday after Trinity
 8:00 a.m. The Holy Communion.

9:30 a.m. Morning Prayer and Church School.

11:00 a.m. Morning Prayer and Address

6:30 p.m. Church School Party

7:30 p.m. Adult Inquirer's Class

Tuesday, November 1st -

'All Saint's Day'
 9:00 a.m. The Holy Communion.

Arrange Special Church Services

A special week-end Revival will be conducted in the God's Missionary church, Main St., Salunga, on October 28th, 29th and 30th. Rally Day will be held on Sunday, Oct. 30 at 9:45 a.m.

Rev. John F. White, pastor of the church, will be the speaker for all these special services.

The Rine-Bringer Trio, of Beavertown, Pa., will be the visiting singers for these meetings. Special music also will be given by the local church orchestra. Service will start each night at 7:30 p.m. A special prayer meeting will be held each night at 7:10 p.m. in the church basement.

Special nights in the week-end Revival will be— Friday, Oct. 28 - Decision Night. Saturday night, Oct. 29 - Holiness Night; Sunday, morning - Oct. 30 - Rally Day, 9:45 o'clock; Sunday night,

Catch On To Tuna Savings



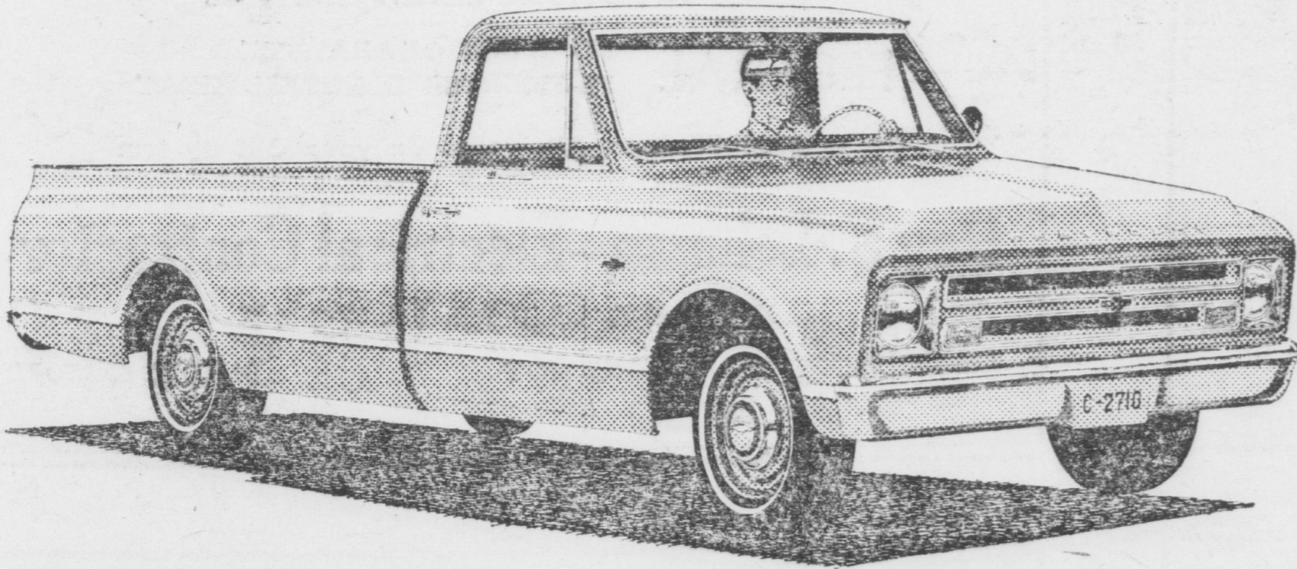
Here's a tuna-cabbage combo that's tops in thrift and taste. When it comes to feeding a family, canned tuna provides exactly what every homemaker wants—body-building protein comparable to that of lean meat, and economy. You can depend on tuna to hold the line in today's market of rising prices. Hot Tuna Skillet Casserole is a hearty main dish that the whole family will enjoy and it takes only minutes to prepare.

Hot Tuna Skillet Casserole

- 2 cans (6½ or 7 oz. each) tuna in vegetable oil
- 6 cups shredded cabbage
- 4 carrots, grated
- ½ cup chopped green pepper
- 1 tablespoon celery seed
- 3 tablespoons vinegar
- 1 cup mayonnaise

Drain vegetable oil into large skillet and heat. Sauté cabbage, carrots and green pepper for about 5 minutes; stirring occasionally. Sprinkle celery seed and vinegar over cabbage; toss in tuna. Cover skillet and continue cooking for about 5 minutes longer. Remove from heat. Fold in mayonnaise thoroughly and serve immediately. Serve with boiled or mashed potatoes.
 YIELD: 4 servings.

TRY THE WORLD'S TOUGHEST 2-DOOR



This new Chevy pickup looks so good you could call it a 2-door. (You could also call it the toughest Chevy pickup ever built!)

This Fleetside pickup's got a lot more than good looks going for you.

It's got new construction to bring you more durability, working ease, comfort and safety. Check that new all-steel pickup box, for example. New full double-wall side panels and tailgate keep your load from leaving its mark on Chevy's good looks. And new measures have been taken to help keep out rust and corrosion. Like the one-piece wheelhousings that

now protect sheet metal against fire splash.

Inside, the color-keyed cab looks and feels like a pleasant place to work. There are a number of new safety features, too: an energy-absorbing steering wheel and a dual master cylinder brake system, to name two.

And here's another thing the new Chevy pickup's got going for you: it rides better than some cars. Choose from 26 Fleetside and Stepside models now at your Chevrolet dealer's.



Try this brand new breed of pickup at your Chevrolet dealer's

37-5770

NEWCOMER MOTORS, Inc.

Cor. Main & New Haven Sts.

Mount Joy, Pa.

Oct. 30th, Youth Night. An old fashion hymn sing will be a part of each Service. The public is invited to all services.

★ Marietta News

(From page 10)

school districts.

Collect For UNICEF

Members of the Marietta Junior High Youth Fellowship of the Presbyterian Church collected for UNICEF on Tuesday, October 25, from 4 to 5 o'clock. The door to door campaign benefits the United Nations Childrens Fund, organized after World War II supplying food, medicine and vaccine to children in war torn countries. After collections are completed in the Marietta boro a Halloween supper party was held in the social hall of the above church for the solicitors and their guests.

★ Time|y Tips

(From page 7)

ers have superior wash and wear performance. But oily stains are difficult to take out if allowed to set for more than 24 hours. Stains need to be treated immediately, even though the garment may not be washed until later. Pre-treat the neckline just before washing, using a liquid heavy-duty synthetic detergent and rubbing it into the neckline. Rinse, allowing soil to flow off the surface from which the staining occurred, then follow regular washing procedure.

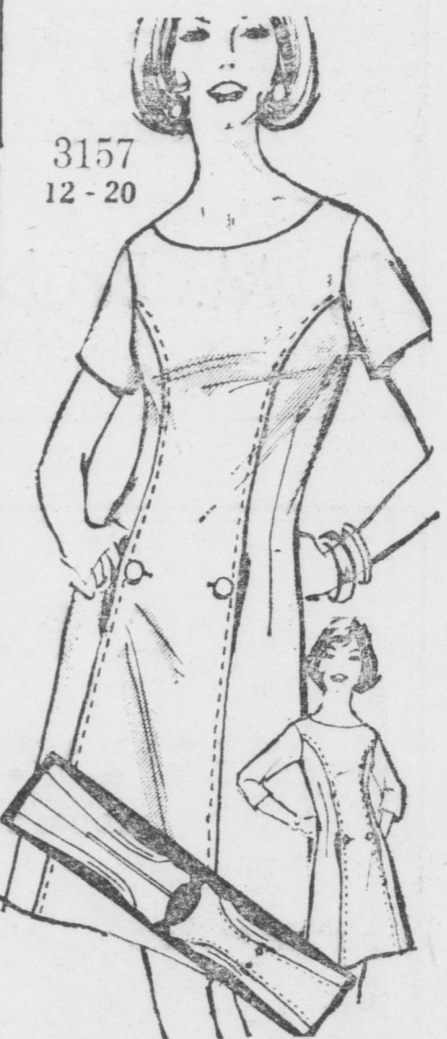
Another point to remember is that chlorine bleach does not help in restoring whiteness to polyesters. After repeated washings, white polyesters. fabric may have a tendency to look dingy yellow, because they pick up and hold stains, such as bacon grease, salad oil, and body oil. When this happens, the fiber needs stripping or reconditioning to remove this oil and soap curd combination.

Usually polyester is washed in moderately warm water

spin in cool drier. Hang and straighten garment, seams, and collar. For best results, keep the label that comes with the garment and refer using a light agitation action in the washer. Drip-dry or to it before washing.

Marriage is an institution held together by two books—cook and check!

NEW PRINCESS



New princess, fitted a little closer to the body; lovely lines in a dress that you can make with short or below-elbow sleeve, or with none at all. No. 3157 comes in sizes 12, 14, 16, 18, 20. Size 14 with short sleeve takes 2¾ yards of 44-inch fabric.

Send 40c plus 5c postage for this pattern to IRIS LANE (care of this newspaper), Box 1490, New York 1, N.Y. Add 15c for first class mail and special handling.

Free pattern is waiting for you. Send 50c for our new Fall-Winter Pattern Book which contains coupon for pattern of your choice.