

Boy and Girl of the Month



JOHN W. FRECHT, JR.

John is the son of Mr. and Mrs. John W. Frecht, 94 N. Chestnut St., Marietta. He is a senior in the college preparatory course at Donegal high school.

His high school activities have included: Rifle 9,10,11; F.T.A. 9, 10, 11, 12; Assembly Programs, 9, 12; Junior Play Committee; Senior Play Committee; Student Council 9, 12; President Student Council 12; Library Assistant; Jr. Prom Committee; Tumbling Team, 11; Ayping Club 10; Slide Rule Club, 9; Varsity Club, 11, 12.

John is a member of the Marietta Methodist church. He is currently president of the Youth Fellowship, a member of the church choir, editor of the church newsletter, and has served as an usher.

He is planning on going to Toledo, Ohio, to the National Meat Cutting School after graduation.

John also attended Rotary Camp in June of '65 and Student Council Work Shop.

PP&L Proposes Rate Reduction

Pennsylvania Power and Light Company has announced that it has petitioned the Pennsylvania Public Utility Commission to establish a new power rate for large industrial loads. It will apply to customers taking delivery from the company's transmission lines at 66,000 volts, providing their own substation facilities and using large blocks of power — in the range of 40 million kilowatt-hours and more a year.

Explaining the new rate, PP&L President Busby pointed out that these large industrial loads are eagerly sought after by practically all regions and communities because they are key elements in economic growth. In addition to being large employers in their own operations, these major industries produce supplementary employment in related industries and research activities which frequently develop around them. Thus, the new rate is intended to provide an important competitive tool for retaining and attracting large-scale industry for Central Eastern Pennsylvania.

The proposed rate reduction, which will produce savings of about \$1.5 million annually, is another step in the company's rate reduction program — and will be the ninth voluntary reduction since September, 1961.

Patronize Our Advertisers

Fill Cracks And Holes Better

Handles like putty. Hardens like wood.

PLASTIC WOOD

The Genuine - Accept No Substitute.



LUCINA Eshelman

Lucy is the daughter of Rev. and Mrs. James M. Eshelman, Mount Joy R2.

She is a senior in the college preparatory course at Donegal high school.

Her activities include: Future Nurses Club 9-10-11; Home Economics Club 10; American Legion Award Winner 9; Chorus 9-10-11-12 (Vice President 11-12) County Chorus 11-12; District Chorus 11-12; Regional Chorus 11; String Ensemble 9; Orchestra 9-10-11-12; County Orchestra 10-11-12; District Orchestra 10-11-12; Regional Orchestra 11; Student Council 10-11; Class Secretary 9; Tri-M. Society 10-11-12 (Vice President); Little Abner Operetta Junior Play Committee 11; Yearbook Editor-in-Chief 12; Talent Assemblies 9-10; Dramatics Club --.

She also is active in the Lancaster Opera Workshop.

Lucy is a member of the Florin Church of the Brethren, where she is active as a chorister, a member of the church choir and also the music committee.

She will enter Manchester college next fall to prepare for a career in nursing.

Donegal Chess Team Is Winner

In a field of ten teams, Donegal high school's chess team presently stands third with three wins, two losses and one tie.

Topping individual honors in the Lancaster County Scholastic League is Carl Haas, a D.H.S. junior. Team captain is Steve Reinhold. Regular senior members of the team are Barret Borry, Larry Hostetter and Mike McDowell.

Trophies Shine

Athletic trophies won by Mount Joy high school stars between 1930 and 1950 have a new luster!

Kept is a trophy case in the Donegal Annex auditorium, these prizes of other years had become dull, dingy and lacking in proper dignity. But, under the direction of Mrs. Margaret G. Brown, members of the Future Home makers of America recently completed a cleaning project. Polish and elbow grease have returned the trophies to some of their former splendor.

"Men do not FAIL; they give up TRYING."

"Don't brag. It isn't the whistle that pulls the train."

Licorice Root Promises Food

Licorice root appears to be a suitable substitute for corn cobs as a source of energy and protein for cattle feed, according to Theodore Long, of the Agr. Experiment station at Penn State U.

For several months, Dr. Long and associates have fed steers a diet containing licorice root in place of corn cobs normally used as a forage. Licorice - fed steers and steers fed regular feed appeared to gain the same weight, with no adverse effects.

If corn cobs become scarce, as they are in some areas of the country, licorice root may find welcome buyers among feed manufacturers, Dr. Long predicts. Further testing must be done, he states, to determine whether there are any long-range adverse effects from the feeding of licorice root to cattle.

The Penn State experiments found that licorice root has nearly the same feeding value as average timothy hay. Licorice extraction companies package some of the root for mulch & mushroom bedding and some is used in manufacturing paper-

board. Otherwise, it is discarded.

Thousands of tons of raw licorice root are imported from Mediterranean countries each year. From these tons of root the flavoring is extracted for use in tobacco as well as confectionaries and medicines.

Ginder Named

(From page 1)

Association. Presently he is a member of the Mount Joy Sportsmen's Association, and a former member of the Florin Lions Club.

"When you have accomplished your daily task, go to sleep in peace. God is awake."

JOHNSON BUS SERVICE

BUSES FOR ALL OCCASIONS

FLORIN, PA.

Phone 653-0321

APPLES

Stayman Winesap - York Imperial Golden and Red Delicious

HOME GROWN POTATOES

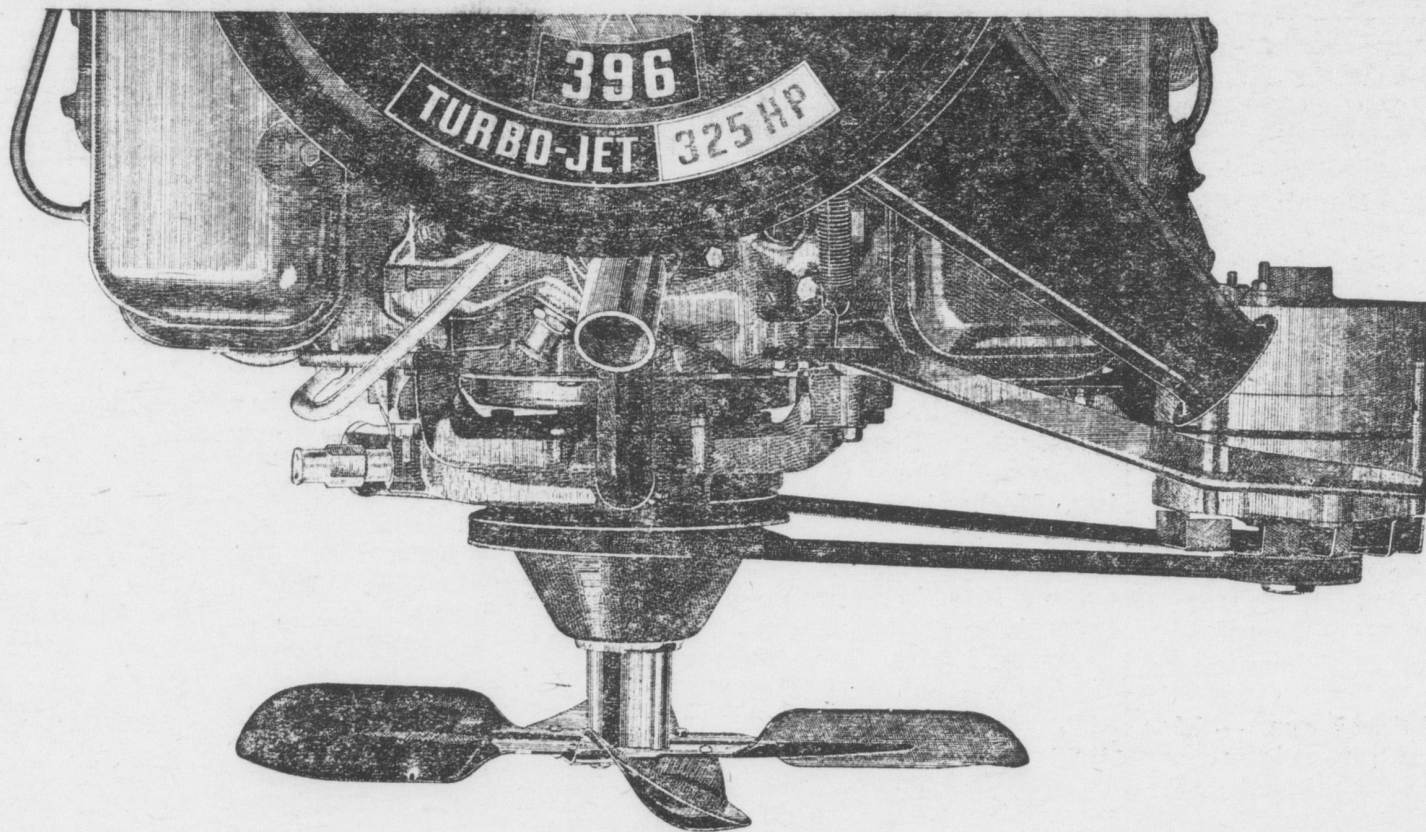
IRISH COBBLERS & KATAHDIN POTATOES BACHMAN CANDY - NECK PUMPKINS 1/2 PRICE

SWEET CIDER

FRESH EGGS—Jumbo & Large, cracked - 4 doz. \$1.00

WOLGEMUTH FRUIT MARKET

1/4 MILE WEST OF FLORIN PHONE 653-5661 Winter Store Hours 8-6; Except Friday 8-9 Closed Sun.



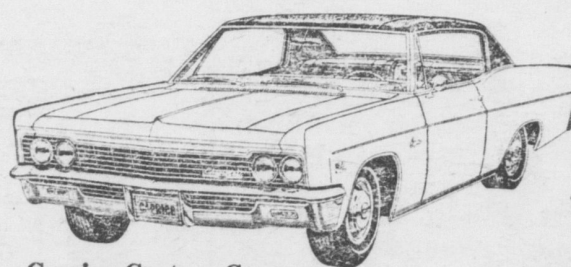
Loafer.

PERFORMANCE THE CHEVROLET WAY

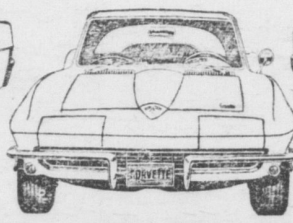
It's our Turbo-Jet 396: the V8 strong enough to run your Chevrolet and its automatic transmission, power steering, air conditioning, power windows, AM/FM Multiplex Stereo radio. And more. Without even breathing hard.

Reason is, a Turbo-Jet V8 breathes deeper. Breathes freer. Delivers more usable power whenever you need it—like for safer passing. Works more efficiently. Where the smaller engine hurries, a Turbo-Jet V8 just loafs along. You try it, at your Chevrolet dealer's. And nowhere else.

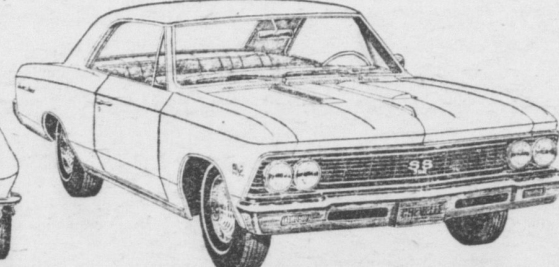
We offer two Turbo-Jet 396 V8s for '66. You can order 325 hp in any Chevrolet, 325 or 360 hp in a Chevelle SS 396. There's also a 427-cu.-in. Turbo-Jet (up to 425 hp) available in Chevrolets and Corvettes.



Caprice Custom Coupe



Corvette Sting Ray Coupe



Chevelle SS 396 Sport Coupe

All kinds of cars, all in one place... at your Chevrolet dealer's Chevrolet · Chevelle · Chevy II · Corvair · Corvette

37-5770

NEWCOMER MOTORS, Inc.

Cor. Main & New Haven Sts.

Mount Joy, Pa.