

NEW ARRIVALS

John W. and Marjorie (Bates) Urban, 115 Broad St., Salunga, a daughter, Saturday, May 15, at General hospital.

Melvin and Mildred (Miller) Shenk, Mount Joy, a daughter, Tuesday, May 11, at St. Joseph's hospital.

Clifford R. and E. Jane (Gephart) Morrison, of 130 Church St., Landisville, a daughter, Thursday, May 13, at St. Joseph's hospital.

Marvin and Susanna (Sauer) Lefever, 138 Main street, Saunga, a son, Tuesday, May 18, at Columbia hospital.

Season's First Golf Tourney

The first '65 season Mount Joy Golf Association tournament will be held on Sunday, May 23, at the Cool Creek course. Tee off times will be between 11 a.m. and 1 p.m. There will be prizes given for low handicap scores, low actual scores, and closest to pin on the #14 hole. Also a special flag tournament will be held where prizes will be given to the golfers who can move the flag the farthest in par which is 71 strokes, plus their own personal handicap. (For instance, if a golfer has a 20 handicap he would place the flag on the

spot where the ball is located on his 91st stroke.)

Also on Sunday at the tournament the pairings for the first match play tournament in Mount Joy history will be announced. For this event, the golfers have been divided into four flights according to their handicap. The championship flight is composed of golfers with handicaps of between 7 and 12. The 1st flight has golfers with handicaps between 13 and 16. The second flight has 16 golfers with 17 to 21 as their handicap, while the third is composed of all other golfers with handicaps of 22 or higher.

For this type of tournament the golfers must play their opponent on a hole-by-hole basis for 18 holes and the person winning the most holes is the winner. There would be four rounds for the championship of each flight. The first round matches must be completed by June 15th. These matches are to be

STAMP CLUB TO MEET

The monthly meeting of the Mount Joy Stamp Club will be held on Tuesday evening, May 25, at 7:30 o'clock in the second floor meeting of the Mount Joy Fire Hall.

All persons interested in stamp collecting are welcome, and invited to attend. J. Richard Dillinger, of Lefever road is president of the organization.

played on Cool Creek or any other course by mutual agreement. The pairings and the tournament charts will be posted in the window of the Mount Joy Tile and Linoleum Co. after Sunday, and results of each match will be reported there.

Past Masters Hold Party

The Past Masters Association of Casiphia Lodge #551 F and A M held their first Ladies night Monday, May 17, at Hostetters.

The program included several selections on the organ by Dr. David E. Schlosser, and vocal solos by Miss Caralyne Blantz accompanied by Mrs. RoAnn Lau. A group of Lancaster county Shrine club Oriental Band men were on hand to complete the musical program. The finale was Mrs. John Roth with her Pennsylvania Dutch act.

The committee on arrangements included: William D. Batzel, Dr. Thomas O'Conhor and George Weber. President Christian Greider was in charge of the meeting and Wm. Batzel was master of ceremonies. Maurice Bailey, chaplain. Asher Beamenderfer is Master of the Lodge.

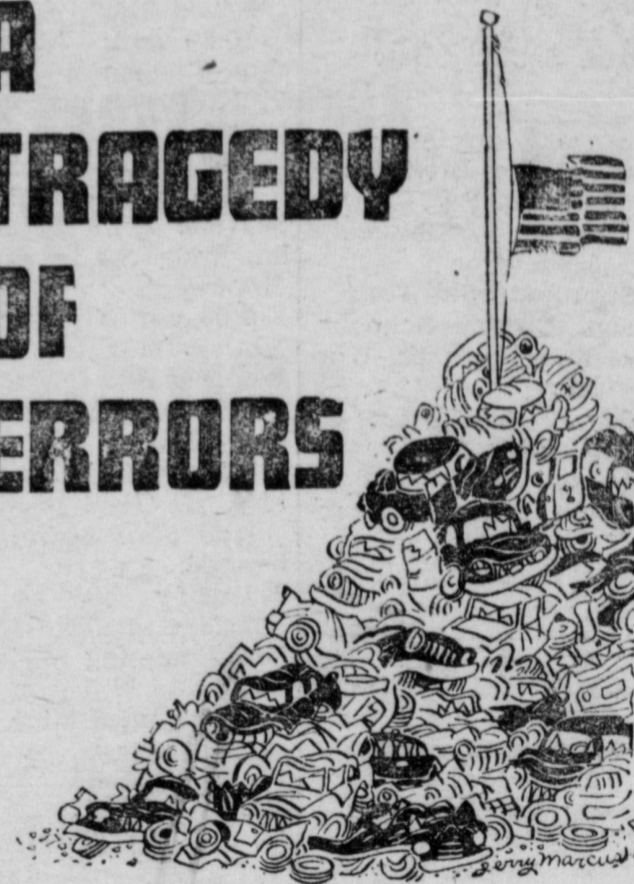
Students Select Council Leader

Nona Shinagawa, seventh grade pupil, was elected president of the Donegal Annex Student Council on Friday, May 13. Other candidates were Dennis Hay and John Parker. Nona will become the first girl president of the Annex Council.

The election followed an Assembly program which included a movie on "The American Cowboy," which was followed by an explanation of the Student Council Presi-

A Tragedy of Errors by Jerry Marcus

A TRAGEDY OF ERRORS



THE TRAVELERS
1965 BOOK OF STREET AND HIGHWAY ACCIDENT DATA

The Travelers Safety Service

3,888,000 persons were killed or injured in highway accidents in 1964.

THANK YOU!
For Your Votes and Encouragement
JIM ROBERTS

PROPERTY OWNERS OF FLORIN WARD

County Farmers Bank will help finance your SEWER INSTALLATION. See Chart for your monthly payments . . . and these payments include life insurance on you until the loan is liquidated.

CASH YOU RECEIVE	MONTHLY PAYMENTS		
	36 MONTHS	48 MONTHS	60 MONTHS
\$ 400.00	\$ 12.94	\$ 10.14	\$ 8.48
600.00	19.41	15.26	12.79
800.00	25.88	20.35	17.05
1,000.00	32.35	25.44	21.32

LIFE INSURANCE FOR UNPAID PORTIONS OF LOAN INCLUDED

Two Offices in Mount Joy to Serve You
One West Main Street
801 Main Street

LANCASTER COUNTY FARMERS NATIONAL BANK

LANCASTER — QUARRYVILLE — MOUNT JOY — CHRISTIANA
Member Federal Deposit Insurance Corporation

dential Election and how the three candidates were selected by Student Council from the present Seventh Grade. The campaign was discussed and the previous annex council presidents were mentioned. They were: 1964-65, Joe Wivell; '63-'64, Cory Funk; '62-'63, Mitchell Albert; and 1961-'62, John Stehman. The three candidates then were introduced by Joe Wivell and each one delivered a speech as to why they should be elected as president and what they would intend to do if elected.

tion there on the same day. Guides for the day will be members of the seventh grade as follows; for the Maytown, Grandview, Seiler and Marietta sixth graders:

Herbert Hess, Patricia Longenecker, Wayne Drager, Dennis Hay, Steve Hess, John Shrum, John Parker, Jean Luzader, Gail McConnell, Terry Ginder, Alice Smith, Ann Nissley, Scott Gemberling, Arthur Baughman, Rebecca Reinhold, Dewey Smith, Keith Gish, Nadine Grove and Roxanne Heisey.

Orientation Day At DHS Annex

Sixth grade orientation day at the Donegal Annex will be held Friday, May 21. Eighth grade students at the Annex will be going to the high school for their orienta-

HELP WANTED MALE

MAN WANTED to work in printing shop. Apply Package Printers, rear of 27 N. Market St., Mount Joy. — 6-1f

MAGIC WAND



Aladdin's lamp has nothing on the pen you carry in your pocket. Add a checking account and you can make money appear out of thin air . . . pay an obligation . . . put wings on a piece of paper that transports dollars thousands of miles overnight. Without checking account service, business would come to a standstill.

If you are not taking advantage of this marvelous convenience it's time to stop in and become acquainted.

Union National Mount Joy Bank

MOUNT JOY, PA.
Member F.D.I.C.

REGULAR HOURS

8 a.m. - 2 p.m. Monday through Friday
5 p.m. to 8 p.m. - Friday

EXTRA DRIVE-IN AND WALK-UP WINDOWS

Daily Until 3:30 p.m. — Saturday - 8 a.m. until 11 a.m.