

BUSINESS DIRECTORY

Convenient Reference To Firms Serving Community

AIR CONDITIONING

AIR CONDITIONING

HEATING

R. V. RICHARDS & SON

Free Estimates

Call Marietta 426-4941

Maytown 426-4691

ANTIQUE RESTORING

Lenheri's Cabinet Shop

MARIETTA, PA.

- Antiques Restored
- Furniture Refinished
- Formica Work

PHONE 426-7591

AUCTIONEERS

SALES MANAGERS
And
Appraisers of Antiques

Call

HOWARD SHAUB
394-7631

VINCE WENDLER

394-1955

LANCASTER, PA.

"We Go Anywhere"

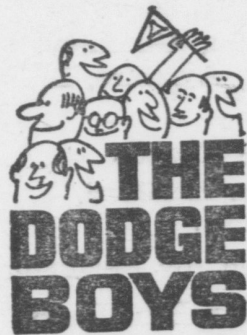
7-5p

AUTO REPAIR

STALEY'S GARAGE

General Repairs
Used Cars - Inspections
FLORIN, PA. 653-5951

AUTOMOTIVE



Wissler & Petticoffer

PHONE 367-1280

Dependable Used Cars
ELIZABETHTOWN

BANQUETS

Mt. Joy Restaurant

307 West Main Street

PRIVATE PARTIES

BANQUETS

CATERING SERVICE

Phone 653-0531

BEAUTY SHOP

Ed Barr's Beauty Salon

229 South Market Street
ELIZABETHTOWN, PA.

PHONE: 367-7437

(Closed Mondays)

DRIVE 'EM WILD

A new device that prevents theft of an auto may well turn crooks into mental patients. The unit, when installed on a car, locks the brakes if anyone tampers with ignition wires. If the brakes are released, the fuel supply is cut off. If the fuel supply is adjusted the brakes will lock again and the ignition system becomes grounded.

When in need of printing remember The Bulletin.

BOLOGNA

Buy it . . .



You'll LIKE IT!
BAUM'S BOLOGNA
"A Select Product"
ELIZABETHTOWN, R. D. 3

BUILDING SUPPLIES AND HOME IMPROVEMENTS

ELIZABETHTOWN BUILDING & SUPPLY CO.



400 WEST BAINBRIDGE STREET

Carl B. Drohan, Inc.

BUILDING SUPPLIES

Ph. 653-1491

Manheim Rd. Mount Joy

DAIRY PRODUCTS

ELWOOD MARTIN
PENSUPREME PRODUCTS
MILK & ICE CREAM
R.D. 2, Ph. Mt. Joy 653-8191

DRUG STORES

PRESCRIPTIONS
WHEEL CHAIRS - WALKERS
Sale or Rent
Kreamer Pharmacy
2-Town 367-1262

EXCAVATING

C. ROBERT FRY
GENERAL EXCAVATING
• Residential
• Industrial
R. D. 2, MANHEIM, PA.
Phone Mt. Joy 653-1253

EXCAVATING AND BACKHOE WORK
Formerly operated by
Harold Forwood
Free Estimates
KENDIG - MAURER
CALL 653-6639

FURNITURE

Eberly
Furniture & Floor
Covering
ELIZABETHTOWN R. D. 3
1 1/2 Mi. East along Manheim
Road
Call 367-5468

INSURANCE

RAY N. WILEY
Independent
Mutual Agent
72 East Main Street
Phone 653-1481
MOUNT JOY, PA.

Government should be like your stomach—it it's working right you don't know you have it.

LOANS

Instalment Loan Service Inc.
(LOANS TO \$600)
Instalment Consumer Discount Co.
(LOANS TO \$3500)
23 Cent. Sqr., Elizabethtown
PHONE 367-1185

MASONRY

JERRY MILLER
MASONRY WORK
102 Poplar St., Mount Joy
Free Estimates
653-1732

LESTER P. ESHELMAN
MASONRY
Brick - Block - Stone
New and Repair Jobs
Donegal Springs Road
653-0291

OIL SERVICE

HOLLINGER OIL SERVICE
FLORIN, PA. 653-3483
If no answer call 653-4938
ATLANTIC PETROLEUM PRODUCTS
Oil Burner Sales & Service

PAINT & BODY WORK

Carriger
Paint & Body Shop
Cars painted, Wrecks re-built
Wheel alignment Services
Rheems 367-6450

W. W. EDGETT
PAINTER

37 W. Main St., Mount Joy
Free Estimates on Interior and Exterior Work
Call 653-2041 after 6 P. M.

PLUMBING

H. S. MECKLEY & SON
PLUMBING - HEATING
OIL BURNERS
Sales and Service
15 W. Main St., Ph. 653-5981

Leo Kob, Inc.

Heating - Plumbing
Air Conditioning
"Since 1904"
24 South Market Street
Elizabethtown, Pa.

ROOMS FOR RENT

ROOMS FOR RENT
Large, furnished. Hot and cold water. New beds - single or double. References.

EICHERLY'S
78 East Main St., Mount Joy

SERVICE STATION

NEY'S CITIES SERVICE
Phone 653-1104
FLORIN, PA.

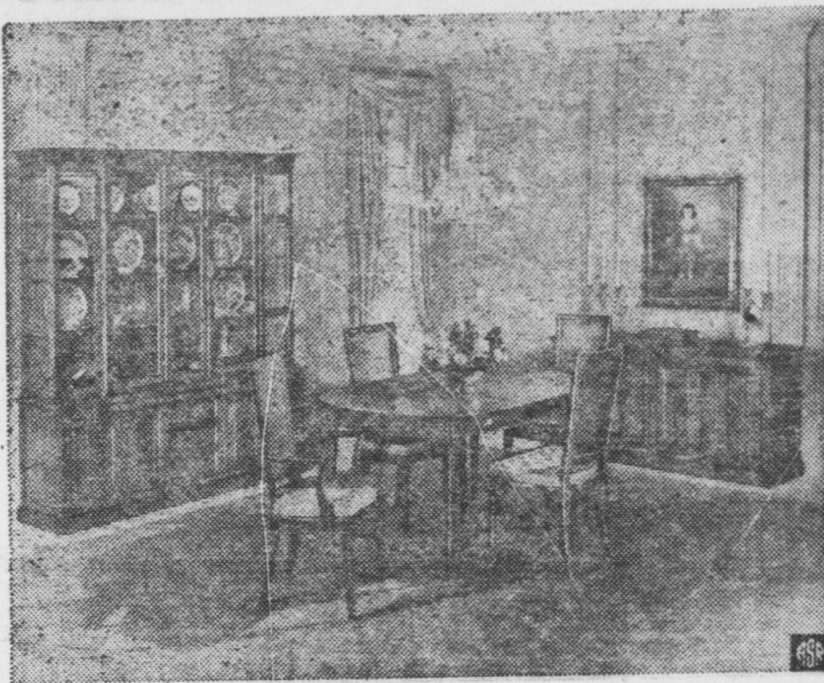
TELEVISION

PHILIP C. DAY
Radio & TV Service
47 E. MAIN ST. MT. JOY
PHONE 653-8021

UPHOLSTERING

John S. Pfautz
RECOVERING and RESTYLING
Call 367-5412
334 West High Street
ELIZABETHTOWN, PA.

Formal Furniture Makes Fall News



They say patio dining caused it all. The shirt sleeved evenings and informality of the barbecue is leading to a fall and winter-time extremism within the home itself. Or at least, so say the furniture makers, who are betting on this trend with the introduction of new, elegant, classic furniture for home dining areas. This grouping by Bassett Furniture Industries is called Facade. It is of Italian provincial inspiration. In keeping with the trend toward softer coloration of furniture finishes, the details include maple burl veneer or drawer and door overlays combined with solid birch mouldings. Wooden rosettes and especially designed brass trim for the legs and hardware add elegance to the architectural design.

by Dr. Geo. W. Crane

The Worry Clinic

Rev. Tremaine is an accomplished orator in the pulpit. But he says he obtained great help from an old colored woman down South. Be sure to memorize her surefire formula. At least 50% of clergymen also need the booklet below but are too snooty to admit it. So they keep emptying the pews and thus making Satan smile.

CASE P-448: Rev. Guy Tremaine is a retired pastor. But he still occupies pulpits almost every Sunday because he is a far better speaker than most of the younger seminary graduates.

Recently he asked me to deliver the Rally Day address at his old home church.

Since it was scheduled for 2 P.M., Rev. Tremaine invited Mrs. Crane and me to the basket dinner at noon.

It was a gala event, with a bountiful repast that would have done justice to a Thanksgiving banquet.

As we visited at the table, Rev. Tremaine told me he had used a formula for preaching that he obtained from an old colored lady in the South.

"Preacher," she said, "P'ease put de cookies on de lower shelf so the little chillun kin reach 'em."

"Den you can be sure dat all de oid folks can get 'em, too."

Applied to preaching, this means "Use stories and words that are easily understood by youngsters."

Jesus employed this same strategy, for he started out with a text or basic theme.

But he then illustrated it with stories, called parables in those days.

Thus, Christ kept his huge audiences, numbering probably 10,000 or more, enthralled all afternoon.

And it wasn't because they thought Jesus was the Son of God, for even his Apostles didn't really believe that till after the Resurrection.

No, it was because Christ was a superb public speaker and used all the laws of public platform psychology with consummate skill.

Jesus was the greatest Applied Psychologist of all time and he gave us the best recipe for a speech that has ever been offered.

It consists of the "narrative" or "anecdotal" formula, where you pick a strong topic; then illustrate it with narrative cases drawn from real life, especially from the present crowd and local community.

Too many preachers stay 2,000 years in the past and never come up to the present date;

They also ignore the audience, never naming a person in the sanctuary or even in their town or the entire U. S. A.

Jesus realized that the secret of human interest is wrapped up in our own epidermis;

Christ thus knew that every inch he moved away from a listener in space and every second he left the present moment of time, he was losing his auditors.

Many times I have warned you young clerics that it takes a livewire in the pulpit to electrify a congregation.

Yet thousands of young clerics still are indirect, failing to maintain eye-contact with the crowd. They look at the ceiling or try to read their manuscript.

One of the world's foremost orators is Dr. Ralph Sockman, who stands away from the podium and just talks, as if he is making up his sermon as he moves along.

So watch how the old pros orate and you young clerics will learn that they follow Christ's anecdotal plan and use audience participation.

They put "de cookies where de little chillun can reach 'em" and don't try to be egotistical, hoping to impress the audience with their own polysyllabic circumlocutions and philosophizing.

Send for my booklet "How to Make an Interesting Speech," enclosing a long stamped, return envelope, plus 20c

Half of you preachers in America need this booklet but apparently are too snooty to realize that fact.

(Always write to Dr. Crane in care of this newspaper, enclosing a long stamped, addressed envelope and 20c to cover typing and printing costs when you send for one of his booklets.)

SKIN ITCH DON'T SCRATCH IT!

Scratching spreads infection, causing MORE pain. Apply quick-drying ITCH-ME-NOT instead. Itching quiets down in minutes and antiseptic action helps speed healing. Fine for eczema, insect bites, foot itch, other surface rashes. If not pleased, your 48c back at any drug store. TODAY at SLOANS PHARMACY in Mount Joy and RUHL'S Drugs, in Manheim.