

KEEP EGGS COOL

Carl Dossin, extension poultry specialist at Penn State University, recommends gathering eggs often during hot, summer months, and removing animal heat from them as soon as possible.

ering eggs often during hot, summer months, and removing animal heat from them as soon as possible.

Auctions - Harold K. Keller - Auctioneer

JULY 17—NOTICE - NO SALE THIS WEEK.
Attending the Nat'l Auct. Assn. Conv. Des Moines, Iowa

JULY 23—BRICK RESIDENCE FOR MRS. SUE ESHELMAN, 41 E. Orange St., Elizabethtown, Pa., Household Items, Antiques & Appliances.

JULY 24—REGULAR FRIDAY NIGHT SALE at 6:30 — Kellers Auction Gallery, Mount Joy, Pa.

JULY 31—AUCTION GALLERY - Mount Joy. Sale at 6:30.

AUG. 1—KATHRYN A. BECKER ESTATE - 3 MILES W. E-TOWN. Near Stevens Hill Church - Home & Contents - Starting at 10:00 A. M. - Lunch Available.

AUG. 7—AUCTION GALLERY - MOUNT JOY, PA. Friday night Sale at 6:30.

AUG. 8—COMPLETE SELLOUT - BAIR'S WELDING SHOP Columbia Ave., Mount Joy - Welders, Trucks, Grinders, Tools, Equipment & Real Estate.

AUG. 15—AUCTION GALLERY - MOUNT JOY, PA. — Regular Friday Night Sale at 6:30.

WATCH THIS PAPER FOR MORE AUCTIONS

CALL 653-0451

Member Southeastern Penna. & Nat'l Aucts. Association 15-2c

PUBLIC AUCTION

—OF—

ATTRACTIVE

Three-Bedroom Brick Residence

**AT 41 EAST ORANGE STREET
ELIZABETHTOWN, PA.**

Modern Home Only Four Years Old
Along With Contents, Selling at Auction

THURS., JULY 23, 1964

AT 6:30 P. M.

Real Estate at 7 p.m.

Household Goods - - Appliances - - Antiques

Sale by

Mrs. Sue H. Eshelman, Owner

H. K. KELLER, AUCTIONEER
CLARENCE C. NEWCOMER, ATTY.

15-1c

PUBLIC SALE

—OF—

REAL ESTATE and PERSONAL PROPERTY

SATURDAY, AUGUST 1, 1964

AT 10:00 A. M.

On premises of Falmouth pike, 3 miles west of Elizabethtown.

Six plank chairs and rocker to match, two mirrors, 6 leg cherry dining room table, oak ext. table and boards, Columbia range, like new, Currier prints.

RARE & AUTHENTIC ORIGINAL CHERRY SLANT TOP DESK. SHELL INLAID GRADUATED DRAWERS, INLAID ON DRAWERS.

Small four chest, Marble top table, 2-pc. Living room Suite, two 3-pc. oak bedroom suites, jelly cupboard, 30" 8-day weight clock, painted scenes on door; decorated ironstone milg pitcher, Fiorella ironstone teapot, Cobalt blue china bell, oil lamps, goblets of all kinds, odd lots of plates, dishes, china of all kinds, Tole tray, leg lustre pitcher, large set of old flower blue china set, goblets, ruby glass, milk white set, set ironstone for 12, wine set, ironstone tureens, lovely pottery, cup, glass, celery; German figurines, few coins, wash bowl set, iron dog, shaving stand, flat irons, iron kettle, 3-foot; pots, pans, kettles, wooden tubs, jugs, crocks, 6 cane chairs, several quilts, rockers, rugs, doughtrays, high-chair, 4 old quilts, known to be at least 75 years old; beggar quilt, cradle, rocker, frames, rope youth bed, two blanket chests.

MYRTLE H. GERMAN

BERTHA H. GIVENS

Administratrices of the Estate of
Kathryn A. Becker, Deceased

On the same day there will be sold a

2 1/2 STORY DWELLING

In West Donegal Township along Falmouth Pike containing approximately 120 perches.

Residence—Aluminum combination storm and screens at doors and windows, good water, Frame House with siding—Nearly 3/4 acres; 3 bedroom Country Home, ideal for horse and ponies.

Lunch counter by E-town E.U.B. Church.

Place will be vacant and available for immediate occupancy. Personal property to start at 10 a.m. Real Estate at 2:00 p.m.

Terms by

ESTATE OF AARON K. BECKER

ESTATE OF KATHRYN A. BECKER

Harold K. Keller, Auctioneer
Alspach & Ryder, Attorneys

Also at same time and place:

Tappan gas stove, coal heatrola, small cabinet, tools of all kinds, cultivator and other numerous articles. 16-3c

How Hot Should An Iron Be?

How hot should a hand iron be to remove wrinkles but not discolor or weaken a fabric?

That depends on the fiber content of the fabric, says Helen E. Bell, extension home management specialist of Penna. State university.

In recent research to determine safe and efficient temperatures, household equipment specialists in the U. S. Dept of Agriculture found temperatures ranged from 225 degrees to 350 degrees, depending on the fiber. Test samples included fabrics of eight widely used man-fibers and four natural fibers. Samples were evaluated on the degree of smoothness obtained at various ironing temperatures. Also noted at different temperatures were unsatisfactory changes, such as puckering, shrinking, stiffening, sticking to the iron and change in color, Miss Bell explained.

Modacrylic fibers, such as Dynel and Verel, needed the lowest temperature of 225 degrees for satisfactory results; cotton and linen needed the highest temperature of 350 degrees.

The researchers found desirable ironing temperatures for other fiber families were: 250 degrees for Dacron polyester, and the acrylic fibers including Creslan, Orlon, and Sayelle; 275 degrees for triacetate; 300 degrees for wool, acetate, and nylon; and 325 degrees for Kodol polyester, rayon, and silk.

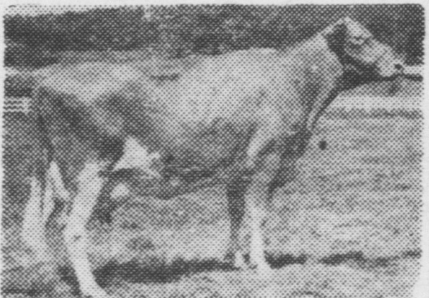
Labels on today's fabrics provide information on fiber content. By knowing fiber content and using proper ironing temperatures, consumers can protect the fabric's appearance, Miss Bell adds.

Oscar H. Funk Heads Rotary

Oscar H. Funk, president of the Instalment Consumer Discount Co., Elizabethtown, has taken office as governor of district 739 of Rotary International.

He was elected to the office at the annual convention of Rotary International in Canada last month. Funk is one of 276 men who will serve as Rotary governors.

He will represent 36 clubs in east central Pennsylvania.



This Cow Produces A Lot Of Milk!

She is a 2057 Superior daughter and she has these outstanding production records:

10.677 531 Jr. 2 305-2X
#16.040 #811 Sr. 3 305-2X

Service to her sire is available daily by calling—

MANHEIM . . . 626-2363

MT. JOY . . . 653-1451

(weekends)

OR 569-0411

(every day)

ATLANTIC BREEDERS' COOPERATIVE

LANCASTER, PA

PUBLIC SALE

—OF—

Real Estate, Household Goods and Antiques

SAT., JULY 25, 1964

AT 12:00 NOON

Located 4 Miles Northwest of Manheim. Along road from Union Square to Elizabethtown. 1/2 mile W. of Union Square, Lancaster County.

8 Room Frame and Shingle House

WITH 2 CAR GARAGE attached. Electricity, Well & Cistern. Nice Location. Approx. 132 Ft. Frontage along hard Road in lovely surrounding Country.

4-Pc. Maple Living Room suite, 2 stuffed chairs, coffee table, clothes tree, table lamps, mirrors, Domestic Elec. Sewing Machine, used very little, Sewing cabinet, Westinghouse Refrigerator, 8 Cu. Ft. Philco Freezer, Maytag Washer, Majestic Coal range, Hot plate, Coal-oil stove with oven, Hamilton Beach mixer, toaster, New Waffle iron, oil space heater, Heatrola, Stove pipe, Hoover cleaner with attach., iron board, G. E. iron, clothes baskets, Elec. Fan, clocks, day bed, two metal and one wooden wardrobe, rugs, etc.

Two 5-pc. Bedroom Suites, poster bed, Wash stands, cane seat chairs & rockers, 4 old blanket chests, Large round drop-leaf table, extension table & boards, small tables, 6 plank bottom chairs and 2 rockers, four old benches, Dry sink with top, side board, two other old cupboards, 1 old cabinet, old mag. rack, wood chest, set Johnson ironstone dinnerware, carnival glass, oil lights, lantern, old knives and forks, wooden fork, large iron kettle and lid, small iron kettle, 5 & 8 gal. crocks, other crocks, iron pump trough, jars, old dishes, snitz dryer, canner, old dolls, books, buckets, bedding quilts, linens, roast pan, scales, bird cage, ice cream freezer, crutches, lawn and porch chairs, etc.

Garden tractor, cultivator and lawn mower combination, elect. Skill-trim hedge clipper, almost new, long heavy duty electric cord, wheelbarrow, block & tackle, bench vise, two ladders, meat grinder, sausage stuffer, ladles, single & double trees, plus many many items not listed.

Sale to begin at 12:00 Noon. Property at 2:00 P. M. Reason for selling, ill health. For information and inspection by appointment call 665-5664. Lunch by Ladies of Milton Grove Church.

Sale conducted by
C. H. WOLGEMUTH AUCTION SERVICE
Terms by

Abram M. Heisey

**AUCTION Complete Sellout
Bair's Welding Shop**

TOOLS — TRUCKS — WELDING EQUIPMENT
40 COLUMBIA AVENUE, MOUNT JOY, PENNA.
PROMPTLY AT 10:00 A. M.

Real Estate Sells at 2 P.M.
Unusual collection of Tools, Equipment and Trucks.
Men, plan to spend the day. We have a lot to sell!

SMALL ITEMS

Scrap iron, pipes, lumber, old doors, wheel pullers, rivets, cotter keys, grinding wheels, chains, bag wagon, electric clock, angle iron, strap iron, lots of heavy bolts, oil cans, tool boxes, 1/4" electric drill, blow torches, soldering iron, building jacks, electric fans, 12 pipe wrenches, 8" to 36"; ten adjustable wrenches 6" to 18", six tin snips, box wrenches, open end vise grips and hand tools, thread cutters, lots of files and chisels, punches, five vises, pneumatic tools, anvils, Black & Decker sander, lots of clamps, drills, saws, 10 power mowers, 8 hand mowers, planks and other lumber, oil stove, 1/2 h.p. Craftsman bench grinder, two lazy susan bolt bins, large variety of welding rods of all descriptions, snap-on tool box, Diehl bench grinder, hammers, screw drivers, truck winch, platform scales.

Real Estate at 2:00 P. M.

40' x 42' CEMENT BLOCK BUILDING

well constructed, steel beams and window sashes, overhead doors, office, lavatory, on a corner lot 104' x 130'. Borough facilities. Zoned commercial, ideal location for repair shop, carpenter shop, machine shop and service work of all kinds. Call 653-0451 for inspection.

THREE TRUCKS

1954 F250 FORD 3/4-TON PICKUP, 1 owner, 28,000 miles
1953 3100 CHEVROLET 1/2-TON PANEL, light green
1951 FORD TRUCK, Dual wheels and Portable Hobart Electric welder.

HEAVY EQUIPMENT

One 30' extension ladder; one 18' extension ladder and ladder jacks, stepladders, Shopmaster drill press with motor; 1/2" Black & Decker drill and press; welding stands, hydraulic jacks, desk and chair, refrigerator, 10 or 12 electric motors, 30-ton hydraulic press; large portable Lincoln with Hercules motor, bought new; welder, 3 chain hoists, Craftsman floor model table saw with motor, like new; industrial type floor model drill press; 4-complete lawn mower sharpening machines with motors, portable shop crane in good condition; air compressor, like new, 1 1/2 h.p. motor, metal turning leather with automatic feed; electric arc welder; complete acetylene welder, extra gauges, new tips, torches, hoses, goggles, helmets, Shipley power hack saw, complete; portable threader made by American tool and die, complete; Porter-Ferguson, porter powered.

ABSENTEE BIDS HONORED WITH 25% DEPOSIT

Terms Cash.

H. K. KELLER, AUCTIONEER
Mount Joy, Pa. Phone 653-0451

16-4c