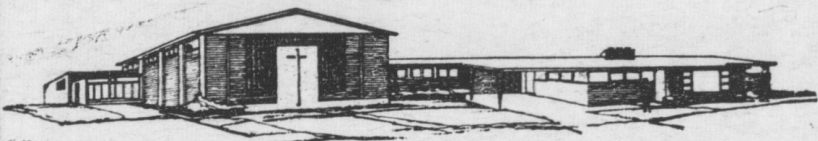


Shop The Farm & Home News Way

A Friendly Welcome For You--

9:15 A.M. SUNDAY SCHOOL For All Ages
10:30 A.M. WORSHIP (Supervised Nursery)
Worrell M. Jones Preaching

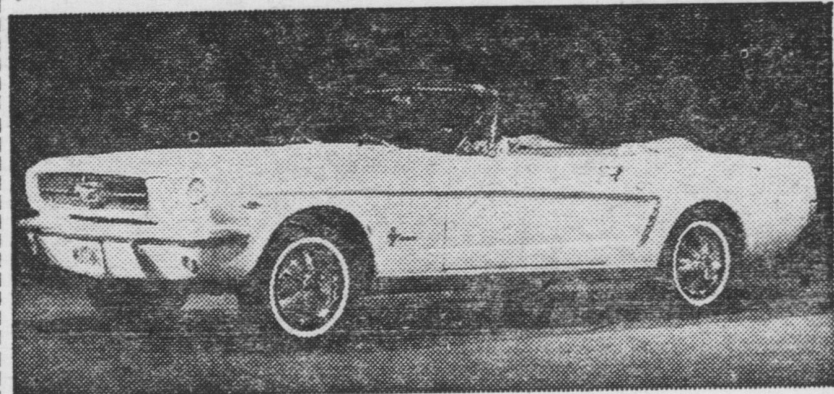


CHIQUES METHODIST CHURCH

U.S. 230 ONE MILE EAST OF MOUNT JOY

An Acre of Parking

653-7131



FORD

FAIRLANE

FALCON

MUSTANG

IMMEDIATE DELIVERIES

Wolf Ford Sales, Inc.

TWO LOCATIONS TO SERVE YOU

411 WEST MAIN ST., MOUNT JOY

653-9701

QUEEN ST. & McGOVERN AVE.,

LANCASTER

392-2169

Aids to Better Gas Mileage

Good gasoline mileage is built into the engines of most automobiles today, but the motorist must keep tabs on a number of things to realize the best possible performance from under the hood.

So, if you find your gasoline consumption higher than it should be, says Samuel T. Milliken, Service Manager of Keystone Automobile Club, here are some common sense practices which should improve the mileage obtained by your car:

Always accelerate gradually; fast starts use twice as much gas. Acceleration from stops takes one gallon in every three. Change speeds gradually.

Dragging brakes waste up to five miles a gallon in gasoline mileage. Keep tires inflated properly. Under-inflated tires act like dragging brakes.

A steady gas pedal at 50 miles per hour is much more economical than varying speeds.

Idling the car engine wastes gasoline.

Leaks in gas lines or tank waste gasoline.

Motor tune-ups at recommended intervals save considerable fuel.

Oil changes and lubrication reduce friction and save fuel. Incidentally, oil that is too heavy can halve the economy in the first 10 miles of every use.

Worth at Least \$3 Per Ton

A ton of manure is worth at least \$3 a ton if you figure what you pay for commercial fertilizer. And, in terms of increased crop yields, it is worth \$5 to \$10 per ton.

One of the best ways to utilize the full value of manure is to see that it is hauled and spread regularly to put plant nutrients to work. An all-weather lot is important so that manure can be loaded and hauled without mud interfering. Paved feedlots and dairy yards prevent manure from being trampled into the mud and rain leaching away its fertilizing value.

A loading ramp is a time saver. This keeps the manure spreader out of the yard and makes loading simple and speedy. A scraper blade or front-end loader is used to push the manure into the

spreader. One cattle feeder has installed an efficient manure loading ramp for his feeding operation. This helps him avoid excessive feedlot build-up and gets manure to the fields under any conditions. He uses a front-end loader as his scraper. He figures that he saves weeks of cleaning time each year with his set-up.

A manure ramp is a real asset on a dairy farm, too. Concrete keeps the cows clean in their modern loose housing set-up. The manure loading ramp makes cleaning easier and saves valuable time and labor.

RICH SOIL NEEDED

Vine crops, such as cucumbers, squash, pumpkins, and muskmelons, need a good rich loam soil containing much organic matter, explains James O. Dutt, vegetable extension specialist at Penn State University. Vine crops also need plenty of fertilizer and insect control. If irrigation is needed, water during the day.

American motorists take over 215 million vacation trips a year. At some point, nearly all the vacationers leave the sleek superhighway to get back to nature via the "byways."

ANIMALS NEED SHADE

Farm animals like available shade from the hot sun, too, says Thomas King, extension animal science specialist at Penn State University. If no natural shade is available in the pasture, you can set four poles in the ground, use a framework of light poles for the roof and cover with straw or corn stover held in place by woven wire.

Use the Classifieds!



Start the day in this frock and you won't want to take it off; it's pretty enough for any time of day. No. 3219 comes in sizes 12, 14, 16, 18, 20 and 42. Size 14, sleeveless takes 3 3/8 yards of 44-inch fabric; with sleeve, 4 1/2 yards of 35-inch.

Send 35c plus 5c postage for this pattern to IRIS LANE (care of this newspaper), Box 1490, New York 1, N. Y. Add 15c for first class. Our Pattern Book is 50c. mail and special handling.

Free pattern is waiting for you. Send 50 cents for our Pattern Book which contains coupon for pattern of your choice.

HEN'S PASTRY SHOP

22 East Gramby Street
MANHEIM, PA.
Phone 665-2021

DONUTS WEDNESDAY
DECORATED CAKES
PIES BAKED DAILY
Sugar Cookies
BROWNIES
Monday Closed

Tue., Wed. 10 a.m. - 5:30 p.m.
Thursday, 4 p.m. to 9:00 p.m.
Friday, 10 a.m. to 9:00 p.m.

HOLLINGER'S or MARTIN'S

SKINLESS

FRANKS

49^c POUND

OUR GOOD—"Made of Meat"

HAMBURG

49^c POUND

MOSEMANN'S

The Store Of Good Things To Eat

37 Market Square

MANHEIM

H. S. Newcomer & Son, Inc.

4th of July 'Sale-abration'

We wish our very good friends and customers a safe and sane Holiday, and wish to remind you that you can enjoy the 4th even better with the money you save now on—

CHARCOAL GRILLS & ACCESSORIES

LAWN FURNITURE

SLEEPING BAGS

FISHING RODS & REELS and EQUIPMENT

SWIM POOLS

SWINGS & PLAY EQUIP.

HAMMOCKS, TENTS

PICNIC BASKETS

Yes, You Can SAVE

AS MUCH AS 50%

WED.-THURS.-FRI.

H.S. NEWCOMER & SON, Inc.

Ph. 653-3361

MOUNT JOY, PA.