

---PUBLIC SALES---

Public Auction

—OF—
Farm Equipment and Machinery

Thursday, March 12th., 1964

AT 12:30 P. M.

Located 5 miles west of Lancaster on Route 30 at the Donnerville Rd., East Hempfield Twp.

FARMALL SUPER M TRACTOR - 3-bottom plow, **FARMALL SUPER C TRACTOR** - Fast hitch, 2-bottom plow, cultivator, 7 ft. grass mower, 2-row Corn Planter, weeder and manure loader, McCormick Deering 12 disc grain drill, McDeering 28 heavy disc hydraulic control, two hydraulic dump wagons, 15 ft. flat wagon, New Idea side rake, grain elevator, McDeering hammermill with knives, P. T. O. seeder.

M. M. UNI TRACTOR with 9 ft. Combine and two-row Corn Picker, in good condition Spring and spike harrows, steel roller, 2000-lb. scales, corn sheller, air compressor, sleigh, walking plow, brooder house, 10x12; Columbian range, meat grinder, sausage stuffer, fence posts,

Two Duo Therm Oil Heaters, 60 cu. ft. Wilson Freezer, shotgun, beds and other household goods. Many other items.

Sale by

ELMER M. SHIRK

J. OMAR LANDIS, AUCTIONEER
Food Service at Sale.



3112
12-20

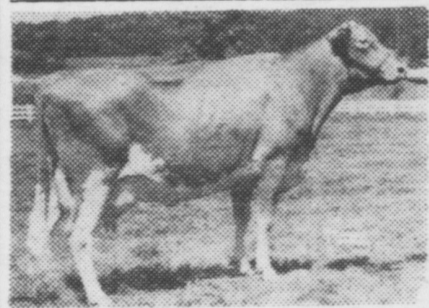
A delightful casual that is right to wear anywhere — classroom, desk or on daily errands — and so it's always on the go. No. 3112 comes in sizes, 12, 14, 16, 18, 20. Size 14 takes 3 $\frac{3}{8}$ yards of 39-inch fabric or 2 $\frac{1}{4}$ yards of 54-inch.

Send 35c plus 5c postage for this pattern to IRIS LANE (care of this newspaper), Box 1490, New York 1, N. Y. Add 15c for first class mail and special handling. Our Pattern Book is 50c.

Keep a close guard over yourself; do whatever you can to aid the unfortunate, but be careful that while you give individual assistance you are not leading a selfish life at home or in business, and thus laying underground road to disaster for many more than you are aiding.

Ideas

Common speakers have only one set of ideas, and one set of words to clothe them in: and these are always ready at the mouth; so people come faster out of a church that is always empty, than when a crowd is at the door.



This Cow Produces A Lot Of Milk!

She is an SG57 Superior daughter and she has these outstanding production records:

10,677 531 Jr. 2 305-2X
#16,040 #811 Sr. 3 305-2X

Service to her sire is available daily by calling—

MANHEIM - - - 626-2363

MT. JOY - - - 653-1451
(weekends)

OR 569-0411
(every day)

Southeastern Penna.
Artificial Breeding
Cooperative
LANCASTER, PA.

PUBLIC SALE

—OF—
REAL ESTATE

SAT., MARCH 14, 1964

2:00 P. M.

205 WEST HIGH STREET, ELIZABETHTOWN,

2 $\frac{1}{2}$ STORY FRAME

Two Apartment Dwelling

Outside covered with asbestos shingles. Fully Rock-wool insulated and all windows and doors are weather stripped - has window screens.

This property is equipped with gas heat, electric, stationary wash tubs.

Gas cook stove in each apartment. Inside and outside newly painted. This building is in A-1 condition.

Downstairs apartment has 4 rooms and bath. 2nd floor apartment has 3 rooms and bath.

Lot dimensions: 33 ft. wide by 198 ft. deep.

Estate of Emma V. Mullen

Executor: Raymond H. Mullen

G. K. WAGNER, AUCTIONEER
JACK B. HORNER, ATTORNEY

48-2c

PUBLIC SALE

—OF—

Farm Equipment, Household Goods, Antiques

TUESDAY, MARCH 10th.

10:00 A. M.

Located 6 miles north of Manheim, east of Rt. 72, 3 miles north of Penryn, along road adjacent to Penna. Turnpike.

1962 JOHN DEERE 4010, fully equipped with 500 and 100 RPM Shaft, 3 point hook with cylinder, 700 original hours.

1955 JOHN DEER 50, J. D. 14 T baler with bale ejector, J. D. 3 point hitch mower, J.D. 3 bottom 16" high clearance special trash plow, J. D. A. W. disk harrow on wheels, J.D. 8 ft. roller harrow on wheels; J.D. 3-Point hitch side delivery rake, J.D. two-row cultivator, J.D. F.B.A. 7-13 disc drill, J.D. No. 15-6 knife chopper, J.D. 4-bar rake, Gehl harvester direct cut with 2-row corn head, used 1 season; 3-point Papec crop sprayer, New Idea #751 hay conditioner, 16 disc McDeering drill, Drumore loader & scoop, 8 ft. Brillion cultipacker, 3-bottom I.H.C. disk plow, Papec hammermill, 290 corn planter, 4-bar New Idea rake, 12 A New Idea spreader, spring harrow, Oliver rake, corn sheller, two 18 ft., one 16 ft. tobacco wagons, one 16 ft. tobacco ladder, 5-unit DeLaval pump with 1-horse power motor, 52-gal. hot water heater, Minnich Press, Fairbanks scales, endless belt, 108 walking plow, spike harrow, shovel harrow, sawbuck, old buggy, horse sulky, colars, harness, bob sled, wheat cleaner, hog trough.

HOUSEHOLD GOODS AND ANTIQUES

Buffet, 2-piece living room suite, 3 dressers, old tables, chairs, rockers, bed springs, rope beds, feed chest, trunks, English saddle, 2 other saddles, market scales, bologna slicers, wheat cradle, saddler bench, old clock, grandfathers rocker, dry sink, flour chest, hanging coal oil lights, Boll weight hanging light, 2 Alladin hanging lights, wooden tubs, sleigh bells, victrola and records, old chests, apple peeler, cherry seeder, large copper kettle, spice boxes, copper wash boiler, wicker covered bottles, coal oil lights, trundle bed, 1910 telephone, cigar board & cutter, wash bowl set, flat irons, cradle, single barrel muzzle loader gun, hall rack, large glass pitcher, plates, platters, 2 ironstone filling dishes, shaving mugs, mirrors, jars, picture frames, books, gas stove, cooking utensils, lots of other old dishes and antiques.

Most machinery like new, many items used only two seasons—Don't miss this sale.

Terms: Cash. Sale by:

ABRAM FLORY JR.
ABRAM FLORY SR.

WILBUR H. HOSLER, CLYDE H. WOLGEMUTH
AND RICHARD SCHROYER, JR., AUCTS.
GALEBACH & GALEBACH, CLERKS

PUBLIC AUCTION

— OF —

Farm Equipment and Machinery

Tuesday, Mar. 10, 1964

AT 12:00 NOON

Located 2 $\frac{1}{2}$ miles west of Mount Joy at Donegal Springs, Penna.

INTERNATIONAL 340 UTILITY TRACTOR with heavy duty No. 2001 loader, tip-top shape.

Three bottom trip plow, rear mounted cultivator, good snow plow.

FARMALL M with new kit.

FARMALL B. N. with cultivator, tobacco hoer

New Holland No. 77 baler, Case 6 ft. combine, 404 New Holland hay crusher, McDeering 13 disc grain drill like new, Brady chopper, Case No. 95 manure spreader, John Deere 28 disc harrow, 10' cultipacker, 2 rubber tire wagons 16' & 18', Stauffer 2-row transplanter, Wood Bros, picker, 30 ft. New Holland elevator, M M 4-bar rake, Case corn planter, 7' Massey Harris mower, 2 New Holland grain bins on running gears, 14,000 tobacco laths, double set of 20 ft. ladders, 3 single tobacco ladders on wheels, Minnich press, David Bradley hammermill, John Deere spring harrow, Century sprayer, grass seeder, air compressor, chain saw, tractor chains, 36 ft. extension ladder.

Platform scales, Stuart cow clippers, 50 ft. endless belt, hog troughs, wheelbarrow, feed carts, heat houser, fits H or M; platform for H or M, battery charger, 6 or 12 volt; garden hose, sprinkler hose, 300-gallon water tank, potato plow and scorer, flat wagon bed 7x14, tobacco shears and spears, coated egg baskets, egg sander, electric fence charger, lot electric fence posts and wire, 50 ft. - 100 ft. of 220 electric cord, 1/2-inch electric drill.

Surge 4 pump milker, 3 units, pipe for 25 cows, 18 milk cans, 8 can cooler, 30 gal. hot water heater, like new; can rack, buckets, etc.

15 HEAD DAIRY COWS

20 TONS EAR CORN 20

HOUSEHOLD GOODS: 10 piece dining room suite, twin tubs, utility cabinet, 2 Duo Therm oil burners, one two-burner with fan, 275 gal. oil tank, rugs, tables, chairs, blonde baby crib, bassinet, stroller, TV stand, 27-inch base cabinet, glass 2-door kitchen cabinet, small tables, bed, bureaus, dishes and kettles, electric heater, electric fan, white and venetian blinds and other items.

Sale by

Earl R. Shenk

J. OMAR LANDIS, AUCT.
MANHEIM, PA.

Lunch by West Green Tree Church