

● **Worry Clinic**

(From page 1)

tattoo on their chest, which reads: "I Want To Feel Important."

And one of the deft ways of making a person feel more important is to offer sincere compliments.

Start with a smile. And you boys should also learn to be better detectives regarding a girl's wearing ap-

parel. Notice her hat or frock or necklace or bracelet.

Most men can't remember even the color of a girl's dress. And they seldom recall if she was bareheaded or wearing a cute little hat.

Oh, they react to the general effect of a girl's costume and realize she seems attractive or dowdy, but they seldom can tell you any details of her costume.

So you fellows of high school and college age should learn the habits of becoming social detectives.

If you'd spend more time remembering a woman's ap-

parel than the new makes of sports cars, you'd be much farther ahead socially.

So pay a verbal compliment, in addition to your ready smile.

But there are five ways to offer verbal compliments.

One of the best is to ask for advice. Girls are doubly delighted to have a man seek their help and opinions;

For that not only makes them instantly feel important, but it also gives them a possessive, semi-maternal interest in the boy thereafter.

Besides, when a girl offers a boy some advice or counsel, then she wants to see him again to find how her suggestions have worked out.

"Where your treasure is, there will your heart be also," is the Bible's way of putting it.

And your advice is a part of you, just as much as your money or real estate.

So ask a girl for suggestions concerning your choice of a career or the college courses you are contemplating. Or even the type of hat you plan to purchase.

An ugly, awkward male often can wrap a beauty queen around his little finger if he follows this strategy.

For most men say the obvious things and thus flatter the girl on her figure or face.

The smart operator, however, realizes that if you want to attain real distinction in a girl's eyes, you must break away from what the majority of admiring males tell her.

So be different and ask her opinions or help. That deft form of compliment will then tie her interest to you for tomorrow and the future, so she'll want to see you again to check on how her advice has helped you.

For further strategy, send for my booklet "How to Pay Compliments," enclosing a stamped, return envelope, plus 20c. It explains the five laws for complimenting.

(Always write to Dr. Crane

in care of this newspaper, enclosing a long 5c stamped addressed envelope and 20c to cover typing and printing costs when you send for one of his booklets.)

If you can't have the best of everything, make the best of everything you have.

Success is not so much a matter of talent as of concentration and perseverance.



BEAUTIFUL
Long-Lasting Christmas-
TREES
LIVING and CUT

FINE LAWN AND GARDEN GIFTS

Toro or Wheel Horse Tractors and Mowers — Snow Throwers at special prices—Quality tools and supplies — Bird Food and Feeders — Evergreens — Flowering Trees and Shrubs — Thermometers, Barometers, etc. Or . . .

USE OUR HANDY GIFT CERTIFICATE

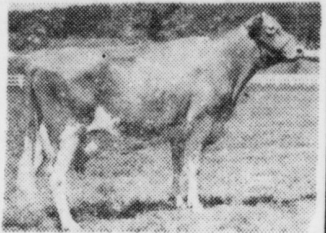
Ask For Our Free Helpful Garden Calendar

Free City Delivery — Free Parking
Since 1895 An Old Nursery with New Ideas.



Manheim R. D. 1 (Rt. 72)

Ph. Landisville 898-6611 or 898-4403
Monday, Thursday, Saturday to 9:00 P. M.
Closed Sunday



This Cow Produces A Lot Of Milk!

She is an SG57 Superior daughter and she has these outstanding production records:

10,677 531 Jr. 2 305-2X
#16,040 #811 Sr. 3 305-2X

Service to her sire is available daily by calling—

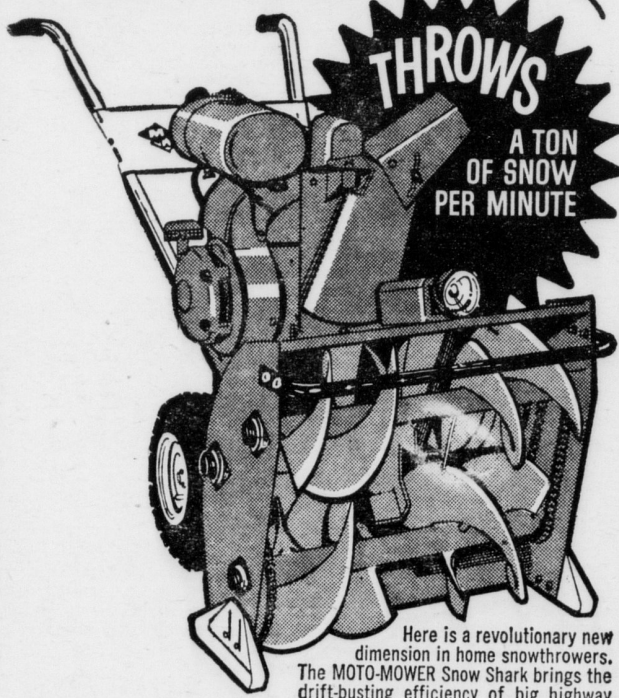
MANHEIM . . . 665-2467

MT. JOY . . . 653-1451
(weekends)

OR 569-0411
(every day)

Southeastern Penna.
Artificial Breeding
Cooperative
LANCASTER, PA.

NOW YOU CAN CLEAR YOUR WALKS AND DRIVEWAY IN MINUTES with a new MOTO-MOWER® SNOW SHARK



Here is a revolutionary new dimension in home snowthrowers. The MOTO-MOWER Snow Shark brings the drift-busting efficiency of big highway snowthrowers to the homeowner field. The result is a unit with truly amazing capacity and exceptional ease of operation.

Big double impellers chew into drifts. The solid impellers feed the snow to the center mounted Turbo-throw which provides equal efficiency in all directions.

A convenient control on the handle enables the operator to easily control the chute direction, throw snow 40° to 45° anywhere from 90° left to 90° right.

This big, heavy duty, cast iron 6 1/4 H.P. MOTO-MOWER engine built expressly for Moto-Mower by Kohler, is specially winterized.

100% heavy duty chain drive throughout assures efficiency, eliminates power wasting slippage.

The fully enclosed, gear driven automotive-type transmission is lifetime lubricated. All moving parts run on lifetime lubricated ball bearings.

To provide extra convenience for after-dark operation a powerful headlight helps give you 24 hour performance. (Optional equipment).

A Complete Line of Snow Blowers

Devonshire's Mower Service

"We Service What We Sell"

3015 Marietta Ave. Lancaster, Pa.

Toys - Toys BEAUTIFUL DOLLS Prices Kept to a Minimum

Ideal Dick Tracy Copmobile - "The Dakotas" Deluxe Cowboy Gun Outfit - New! Mattel Tiny Chatty Baby - Eldon Deluxe Road Rac - Battery Motor Play Drill - Emenee Electric Enlarg-A-Graph - Mickey Mouse Club Ice Cream Machine - "Small Fry" Holster Sets - Keener's Give-A-Show Projector - Plush Dogs, Cats, Bears - "Miss Popularity" Game - "TV Match Game" - Hugh Downs' Chit Chat Game - Transogram "Pretzel the Pick-Up Pooch" - New Mattel "High Gear" Game - Hasbro Grimms' Fairy Tales Games - Fun Peg Desk - TV "Password" Game - Remco Automatic Pilot Supercar - Tonko Toys - Mechanical "Traffic Control" - Electric Football and Hockey Games - Tots Pull and Push Toys - Hasbro Pin Ball Games - Dr. and Nurse Kits - Playskool Modeling Dough - Tool Chests - "Wisk-Off" Washable Crayons - Music Box - Musical Top - Blocks - Hasbro Tootsie Roll Bank - Table and Chair Sets - Ironing Board Set - Doll Strollers - Doll Carriages - Overnight Luggage, Little Miss Hasbro Hair Dryer Set - Split level Doll House and Furniture - "Jr. Chef" Pastry Mix Sets - Combination Game Boards - Snowing Sleds - Skates - Wagons - Tricycles - Bikes - Blazon Spring - Action Morse - Erector Sets - Microscope Sets - 5 in 1 Slate & Crayon Boards - Magic Milk Bottles - Magic Gas Pumps - Super Giant Poly Tractor - Train Sets - Inflatable Giant Santa - Wood Baby Doll Cradles - Black Boards - Combination Blackboard & Movie Screen - Hasbro Dinner Party Set - Plane Model Kits - Hot Rod Kits - 4 Old-Timers Model Car Kits - Kleen Teen Fashion Doll Case - Plush TV Seat Animals - Science Kits - Hasbro Brain Board Game - Mother's Helper Cleaning Set - Flintstones' Motorized Kits - "Dream Date" Game - Gaylord - And Many More.

H. S. Newcomer & SON, Inc.

EAST MAIN ST., MOUNT JOY

PH. 653-3361



CRAMER \$350.00

sparkling PERFECTION



CULHANE \$150.00

GENUINE REGISTERED **Keepsake** DIAMOND RINGS

Rings enlarged to show detail. Prices include Federal Tax.

Open Daily 9 to 9



Koser Jewelry
34 East Main Street
MOUNT JOY, PA.
DIAL 653-6941