

Many a man is ready to serve his community if the people of the community will do what he tells them to do.

A wise man never tries to convince a foolish man; he lets the foolish man think that he has been convinced.

Have Your Carpeting Beautifully Cleaned

IN YOUR OWN HOME OR PLACE OF BUSINESS

By Von Schrader Dry Foam Method
NO FUSS—NO MUSS—NO ODOR
CALL TODAY FOR FREE ESTIMATES

JAMES D. BLANCK

70 SOUTH MAIN STREET MANHEIM, PA.
PHONE MANHEIM 665-4360

20-4c

SWEET - TREAT

PINEAPPLE 3 Big #2 1/2 Cans **97c**

CASE 24 CANS \$7.70

ADELPHIA BRAND
RICH - SMOOTH

ICE CREAM 1/2 gal **69c**

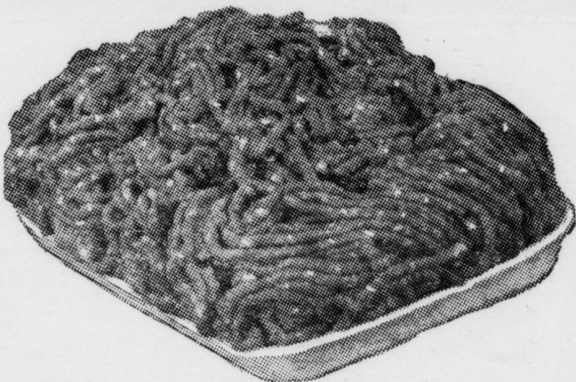
HERSHEY'S
REAL CHOC. FLAVOR
SYRUP

2 1-lb cans **39c**

IT'S
PEACHES and
SWEET CORN
TIME

STRAWBERRY
PRESERVES

12 oz. Jar **19c**



MEAT—Makes The Best

HAMBURG lb **55c**

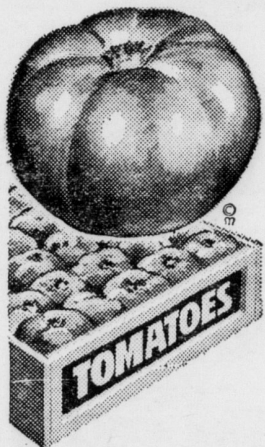
FRESH GROUND

MUSSELMAN CIDER
VINEGAR

gal. jug **79c**

CENTER CUT DOMESTIC
SWISS CHEESE

lb **79c**
The "Big Holes Kind"



FRESH - PLUMP
Tomatoes

RED RIPE
FLAVORFUL

2 lbs **29c**

BEEF FLAT RIBS lb **19c**

MOSEMANN'S

The Store of Good Things to Eat

37 Market Square MANHEIM
"EASY PARKING"

New Ruling To Improve Labeling

Better labeling for furniture, to protect the consumer, is in the offing. According to Changing Times, the Kiplinger Magazine, after nearly three years of debating the fine points with members of the industry and with consumer representatives, the Federal Trade Commission is about to come out with rules that will make life easier for the furniture buyer.

The new rules outlaw any misrepresentations of furniture woods, including indirect misrepresentation resulting from failure to disclose pertinent facts, Changing Times reports. Truthful

descriptions must be on all tags and labels and in advertisements. Specifically, the rules provide:

— The wood used for exposed surfaces must be labeled by its true name. Examples of false claims would (Turn to page 12)

RUPTURE-EASER

T.M. Reg. U.S. Pat. Off. (A Piper Brace Truss)



Double...\$5.95
Right or left
Side \$4.95
No Fitting Required

A strong, form-fitting washable support for reducible inguinal hernia. Back lacing adjustable. Snaps up in front. Adjustable leg strap. Soft, flat groin pad. No steel or leather bands. Unscrolled for comfort. Also used as after operation support. For men, women, children. Give measure around lowest part of abdomen and state right or left or double.

SLOAN'S PHARMACY
Mount Joy, Penna.
Free Customer Parking

WE GIVE— Z.N. Green Stamps

- '59 Ford Conv., AT \$1295
- '58 Chev. Conv. SS \$ 895
- '59 Stude. Lark. S.S. \$ 545
- '59 Rambler Am. S.S. \$525
- '56 Ford Sta. Wag. . \$ 495
- '59 Simca 4-dr., R&H \$395
- '55 Ford 2-dr. H.T. \$395
- '55 Pontiac 2-dr. HT \$ 350
- '53 Chev. P.U. \$350
- '48 Plym, like new
1 owner, 40,00 mi. \$195
- '53 Chev. 4-dr. R&H \$ 150
- '52 Chev. 4-dr., SS \$ 95
- '54 Plymouth R&H \$ 75
- '48 Chev. 1/2T Truck \$ 75

Vic Wenger

Colebrook St., R. D. 2
MANHEIM 665-3728



LONGENECKER

SPECIAL SAVINGS FOR SMART SHOPPERS

GENERAL ELECTRIC SHOPPERS' SPECIALS



BOARD HERE FOR BIG BARGAINS

Cash in on special General Electric bargains! Nothing left out! Nothing reserved! Don't wait! First shoppers get best selections!

12 POUND 11" PORTABLE WITH LIFETIME WIRING GUARANTEE

\$99.00



Sharper, clearer and with more clarity of detail than 23" consoles! Full life-time electronic wiring guarantee. Longer life because tube-killing high-heat parts have been eliminated. Built-in telescoping antenna. Carry handle for easy carrying. **YOUR SPECIAL HERE**

18.8 CU. FT.



3 SWING OUT SHELVES
EASY TERMS
SELF-FILLING ICE TRAY

FROST-FREE REFRIGERATOR-FREEZER
Fits in the Same Space as Old Fashioned Models*

New thin wall insulation is half as thick as ordinary insulation—you get more storage—almost twice as much as old G-E models ('48 to '52*) in the same floor space. Frost-free refrigerator section with 3 swing-out shelves. Self-defrosting 5.5 cu. ft. freezer with self-filling ice tray rolls out.

MOBILE MAID AUTOMATIC DISHWASHER

Needs no special installation.

A complete table setting for 10 is power pre-rinsed, washed, dried and sanitized automatically. Flush-away drain ends hand rinsing or scraping. Automatic detergent dispenser. Just hook it to the faucet and plug it in.

\$139

