

# The Mount Joy BULLETIN

MOUNT JOY, PENNA.  
Published Weekly on Thursdays  
Except Fourth of July Week and Christmas Week  
(50 Issues Per Year)  
11 EAST MAIN STREET, MOUNT JOY, PENNA.  
In the heart of fabulous Lancaster County.

Richard A. Rainbolt

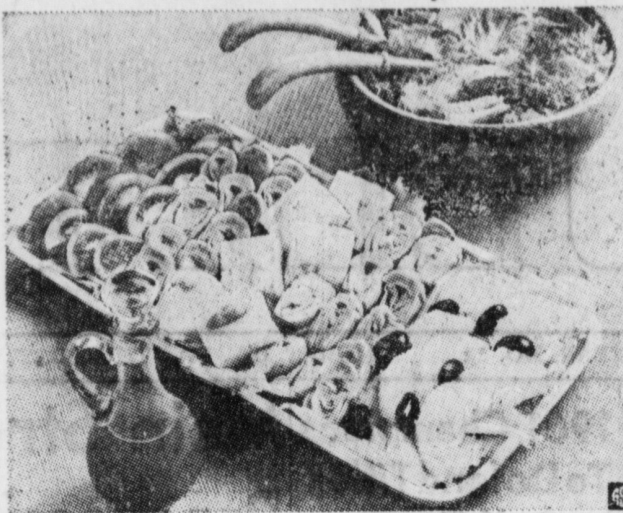
Editor  
and  
Publisher

Subscription Rate - \$2.50 per year by mail.  
Advertising Rates upon request.

Entered at the post office at Mount Joy, Penna., as second class mail under the Act of March 3, 1879.



## A Smart Salad Smartly Served



This masterpiece of an entire salad combines quick-frozen artichoke hearts, pink shrimp molded in lemon flavor gelatin and sour cream, tomato wedges, and grapefruit sections garnished with ripe olives. A clever idea is to serve the tossed greens separately and top them with one's choice from the salad platter.

### Platter Salad

**Shrimp Squares:** Dissolve 1 regular size package (3 ounces) lemon flavor gelatin in 1/4 teaspoon garlic or onion salt in 1 1/4 cups boiling water. Add dash of pepper, 1/4 teaspoon paprika, 1 tablespoon chopped parsley, 1 tablespoon vinegar, and 3/4 cup sour cream. Pour into an 8x4-inch loaf pan. Chill until slightly thickened. Then set 1 1/2 cups cooked shrimp in thickened gelatin, placing 2 shrimp, one on top of the other, about 1/4 inch apart. Chill until firm. Cut into small squares.

**Artichoke Hearts:** Meanwhile, cook 2 packages (9 ounces each) Birds Eye Artichoke Hearts as directed on the package, adding 1 teaspoon garlic or onion salt and 2 tablespoons vinegar to the 2 cups salted water. Drain and chill.

**Parmesan Salad Dressing:** Combine 1 envelope Parmesan salad dressing mix with vinegar, water and oil as directed on envelope or cruet. Makes 1 cup dressing.

**To Prepare Salad:** Arrange in rows, wedges cut from 1 large tomato, half of the artichoke hearts, the shrimp squares, remaining artichoke hearts, and sections cut from 1 grapefruit, garnishing latter with 1/2 cup quartered pitted ripe olives. In large salad bowl, combine 1/4 cup chopped green onions with 3 quarts salad greens. Top individual servings of salad greens with an assortment of the other ingredients. Serve with dressing. Makes 6 generous entree salads.

## PUBLIC SALE OF PERSONAL PROPERTY

**Fri. Eve'g., Aug. 17, 1962**

On the premises located in the Village of Maytown, at No. 24 West Elizabeth Street.

Electric Westinghouse Range, gas stove, 10 ft. 6 in. Frigidaire Refrigerator with freezing compartment, 13 ft. 1 in. Crosley Chest-type Freezer, white-enamel Speed Queen Washer, Norge Gas Clothes Dryer, large dinette set with 8 chairs, 6 chrome chairs, large double utility cabinet, small utility cabinet, kitchen server, limed oak bedroom suite with box spring and mattress, Simmons Bed with box springs and mattress, twin beds with springs and mattresses, Deluxe 300 Admiral 21" T.V. with UHF and VHF, knee-hole desk, end tables, coffee table, metal book shelf, metal wardrobe, vanities, night tables, chests of drawers, clothes trees, mirrors, bridge, table and floor lamps, Electro-lux Sweeper and attachments, typewriter stand, combination gun cabinet and desk, Kenmore washer, some dishes and cooking utensils, wheelbarrow, garden tools, and a lot of articles too numerous to mention.

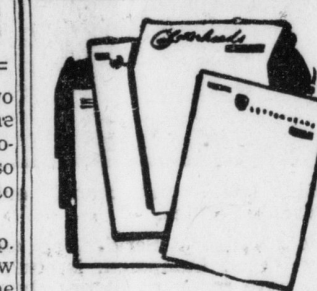
These articles are all in very good condition. Sale to commence at 6:30 P. M., when conditions will be made known by

Walter Dupes, Auctioneer  
Miller & Garman, Clerks

Samuel O. Davis  
10-2c



**RIGHT THIS WAY LADIES**  
To The **BEST BARGAINS in TOWN**  
In Our **ADVERTISING COLUMNS**



**Are You Proud of Your Letterhead?**

If you're not you should be . . . because your letterhead is your silent spokesman . . . your business ambassador to new prospects and old customers alike. Make sure that it is worthy of you. Let us design and print a letterhead you CAN be proud of!

The . . . **Mount Joy Bulletin**

## Yes, Father Still Remembers

I know an elderly matron who was engaged six times in her youth and was married thrice. Of these nine sweethearts, she has difficulty sorting out the one who liked buckwheats for breakfast from the one who wore white socks all summer, the one who took her to the Labor Day Picnic from the one who was so timid about driving. She forgets husband Number Two's middle name and Number Three's church membership. But I will warrant on my oath that, as clearly as spring water shows the crystal pebbles on the bottom, she remembers the boy she met only once, and liked so, and never saw again. He was 19, with blue eyes and a polka-dot tie; there was a dimple beside his mouth; his suit came from a bargain basement; but, ah, that smile came from Ireland, and his voice was like a violin, and his walk a march to drums. It won't be too long before she steps inside the Pearly Gates, and it is her intention to go straight to the Lost and Found Department for him. Even if he looks like the Ancient Mariner, with a long gray beard and glittering eye, she will know how by her leaping heart. Because he was the one who got away. —Selected

The United States produces about 40 percent of the total production of the world.

## New Techniques May Help Cancer

Research and instrumentation techniques developed in geochemical studies at Penn State University now are being applied to biological research on cancer and certain brain diseases.

A cooperative research project has been initiated between the University and Jefferson Medical College in Philadelphia under the auspices of the National Institutes of Health.

Under the project, successful techniques developed by Penn State's geochemists for the finding of small or trace amounts of metals in minerals and rocks will now be used to find certain elements in human tissues. It is hoped that the concentration of certain elements or isotopes may be correlated with certain pathological conditions.

It is already known, for example, that in Wilson's disease, copper is concentrated in the brain, liver and other tissues. Patients suffering from cancer of the prostate have been found to have very high zinc concentrations in that gland. The investigators expect to find similar concentrations of elements in other types of cancer and brain diseases.

In 1921, a United States submarine, having run out of fuel at sea, rigged sails from blankets, hammocks, curtain rods, and the ramrod of a 3-inch gun, and sailed 100 miles to port at two knots.

## Plan Hog Show For Aug. 21-22

The Lancaster County 4-H clubs hog show and sale will be held at the Lancaster Union Stock Yards, August 21 and 22nd. Nine community clubs from the county will be represented, with 50 farm youth participating.

The hogs will be weighed and yarded Tuesday afternoon at the Stock Yards. The show will start at 8 a.m. on Wednesday morning, August 22nd.

will be for ribbons and two trophies presented by the Lancaster County Swine Producers Assn., who will also give a junior membership to the winner.

In the afternoon at 1:30 p.m., approximately 200 show hogs will be auctioned to the highest bidders. This is the termination of the 4-H Pig Club project started last March in the various communities of Lancaster County.

Due to the earth's centrifugal force, objects weigh more at the South Pole than they do at the Equator. This means that 5,000 tons of cargo loaded on a ship in the vicinity of the equator would actually weigh about 25 tons more at the Pole.

## ALL DAY PUBLIC SALE

In ADAMS COUNTY, PA., along Highway 94, 8 Miles North of Hanover, 3 Miles North of Cross Keyes, 7 Miles South of York Springs, 14 Miles East of Gettysburg, 1 Mile South of Hampton, on

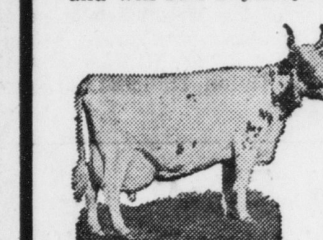
**Saturday, August 18, 1962 - 9:30 am**

### MODERN DAIRY FARM

Modern Well-Built 7-ROOM COUNTRY HOME. Large Living Room with Fireplace, Bath, Heat, Convenient Kitchen. House is surrounded by beautiful lawn and shrubbery with Macadam Driveway, Carport, Etc. Natural Gas piped to the house.

2 BARNs — AUTOMATIC BARN CLEANER — SILO, ETC.  
Jamesway Lever Stanchions, 4 Steel Box Stalls. Barn No. 2 Loafing Pen Style. 2-Car Garage. Milk House, 10x40 Concrete Stave Silo, Butchering House, etc. Both barns wired for 220 current. Farm is located on East side of Macadam road with 3/4 mile road frontage.

TERMS: 10% Down, Balance on or before April 1, 1963. However, full possession can be had in 30 days, if desired. This really is a beautiful farm and home and will suit anybody. Real Estate sells at 10:30 a.m.



**25**  
Registered and Grade  
**AYRSHIRES**

**CERTIFIED BLOODTESTED — TB ACCREDITED and VACCINATED**  
Good Big Cows, all in production, several Fall Calves. The herd is headed by a grandson of Neshaminy Preferred. There are several daughters of Pennstate Mollys Toll Gate. He is a grandson of Pennstate Molly Advancer, a cow with 15,732 Milk, 621 lbs. Fat, actual in 303 days. Lifetime production 115,630 Milk, 4,532 lbs. Fat. This is a dairy herd with unusual size and dairy type.

**ALSO SELLING — FARMALL H TRACTOR and EQUIPMENT**  
1948 H in excellent condition, Cultivator and Mounted Corn Planter, J. D. 2 - 14 inch Bottom Plow, McCormick Disc Harrow, 13-Hoe Ontario Disc Drill, Lime and Fertilizer Drill, New Idea 4-Bar Side Delivery Rake, 30 ft. Kings Wise Bale Elevator, Smoker Corn Drag, D. B. Rubber-Tired Wagon with Silage and Grain Sides.

**NEW IDEA FLAIL TYPE SPREADER**  
New Manure Spreader used very little. Field Force PTO Sprayer with Hi Po Pump, McCormick Pull Type No. 7 Mower, 3-Section Spring Harrow, 4-Section Case Rotary Hoe, Aluminum Tractor Cab, McCormick Cultipacker, Land Roller, Self Unloading Unit, International Electric Fencer, Feed Carts, 3 stainless Steel Surge Milk Units and Pumps, 4-Can Wilson and 2-Can McCormick Milk Coolers, Tools, Etc.

**SALE STARTS AT 10:00 A. M., SHARP.** All Machinery and Equipment will sell before Noon. Cattle in the Afternoon.

Plenty of Lunch will be served by the Sunshine Sisters Class of St. John's Lutheran Church of Abbotstown.

**JOHN G. MYERS, Owner**

Sale Handled by the SANGER LAND AND CATTLE AUCTION COMPANY  
Paul E. Sanger, Auct. - Leroy Sensenig, Pedigrees - Smith & Sanker, Sale Clerks  
PHONE 886-4725 — MYERSTOWN, PENNSYLVANIA 10-2c

## ALL DAY PUBLIC SALE

REAL ESTATE — LIVESTOCK — EQUIPMENT  
**Wednes., August 22, 1962 - 9:30 am**

Located in LANCASTER COUNTY, 10 Miles South of Quarryville, between Pine Grove and Fairmont, near Oak Shade, turn off 222 below Mechanic Grove church of the Brethren, follow signs.

### 142 - ACRE Fertile Dairy FARM - 142

100 Acres Tillable Land, 7 Acres Woodland, balance in Pasture Land with good running water. 10 ROOM HOUSE with Bath, Two Kitchens, Two Stairways . . . Can be used single or double. Hot Air Furnace. LARGE BANK BARN with Wing Attached. Stanchions for 36 COWS, Box Stalls, Calf Pens and Loafing Area. Large Milk House. Farm passed inspection for Class A Milk Market. Corn Shed, Chicken House, Silo, etc. Running water to all buildings. Deep Storage Vault. Mostly level land. 20 Acres in Alfalfa; 27 Acre Corn Allotment.

Immediate possession can be had. Settlement by April 1st, 1963.  
10% Down Sale Day. Also Selling Are

**40**  
Registered and Grade  
**Holsteins & Guernseys**

Bangs Certified — TB Accredited. — Tested in 30 Days  
Good Big Cows. Several Fall Calvers. 36 COWS, 1 BULL, several HEIFERS. Nearly all born and raised on this farm. Herd can be seen anytime between now and sale time. 5 HEAD OF STEERS — 5 HEAD OF GUERNSEYS

**JOHN DEERE 620 — FARMALL M — FORD TRACTORS**  
Farmall M has Pumps, Pulley and Cultivator, 2-Row Planter; 620 has Power Steering, 3-Bottom Radex 3-Point Hitch Plow, 7 foot J.D. 3-Point Hitch Mower; Ford Tractor has Wagner Front End Loader. Pumps were recently Overhauled. John Deere 12A Combine, 1960 New Holland P.T.O. Manure Spreader with High Sides, John Deere Hay Rake.

**NEW HOLLAND HARVESTER and 66 BALER**  
Harvester has Grass and Corn Head, new in 1960. New Holland Ensilage Blower, 40 feet of Pipe; J.D. Grain Blower with 30 feet of Pipe, J.D. 14-Hoe Grain Drill, Wood Brothers Corn Picker, Lionel Bale Elevator, Three Rubber-Tired Wagons, 1 with Hydraulic Lift; 9-foot Cultipacker, Myer Weed Sprayer, McCormick Spring Tooth Harrow, McCormick Disc Harrow, Rotary Lime Spreader, Three Range Shelters.

**3 UNIT SURGE MILKER — 12 CAN COOLER**  
New Surge Stainless Steel Units, 4 Unit Pump, 25 Milk Cans, Twin Tubs, Buckets, etc. Feed Carts, Farm Trailer, 2 Two-Wheel Carts, 4x10 and 6x12; Vac-A-Way Seed Cleaner with Screens, 40 foot Extension Ladder, Weed Control Electric Fencer, Swivel Wheel, DeHornor, Wheelbarrow, Storm Windows, 100 foot Hose, Oil Barrel with Pump, Forks, Shovels, Tools, Chains, etc.

**1500 BALES HAY — 10 TONS STRAW**  
Sale Starts at 9:30 A. M. Sharp. Plenty of Lunch will be served. All Tools and Machinery sell before Noon!

Sale Handled by the SANGER LAND AND CATTLE AUCTION COMPANY  
Paul E. Sanger, Auctioneer — Leroy Sensenig, Pedigrees  
Dorothy Smith, Grace and Ruth Sanger, Sale Clerks

**WILLIAM KIGHT, Owner**  
10-2c

## ★ Bulletin's ★ PUBLIC SALE OF PERSONAL PROPERTY

**Saturday, August 18, 1962**

On the premises located at Upper Lawn on the Oscar Hanson Farm.

White enamel kitchen range; Hot Point apartment-size electric Stove, like new; G. E. Refrigerator; electric Kenmore Ironer; roll-top desk; large drop-leaf extension table; small tables; studio couch; single bed and spring; bed springs; mattresses; innerspring mattress; iron bed and spring; bureau; washstands; towel racks; small stand pedestals; old mirrors; other mirrors; hall rack with mirror; combination desk and bookcase; what-not;

High-back plank bottom rockers; pine sideboard; sink; plank bottom chairs; blanket chest; ink bottle; flat box and flask; coal oil lamp; marble top wash stand; Lust Pitche; some ironstone dishes; homemade soap;

Delta Adding Machine; drop-head sewing machine; cane-seated chairs; rocking chairs; armchair; chair and ottoman; other chairs; clothes trees; bed screen; book shelf and tables; pictures; picture frames; Niagara Massage complete in good condition; Penna. Wall Map; 9x12 Cong. leum Rug; throw rugs; rag carpet; small radios; wind screens; fruit trays; electric fan; electric heater; shoe case; 8-day clock; electric plate; electric popcorn popper; 100 ft. steel tape; large tin water ice box; dishes and cooking utensils; glassware; 1847 Rodgers Silverware; some antique dishes; table linens and napkins; quilts; comforters; desk lamp; floor lamp; other lamps; poultry equipment; Keenco Egg Washer; egg baskets; wheel and tire of a 1953 Chevrolet; garden tools; other tools; black cast mere shawl; wooden tub; Electric Washer; porch mat; empty crocks, jugs & chairs; and a lot of articles too numerous to mention.

Sale to commence at 12:30 P. M., when conditions will be made known by

Walter Dupes, Auctioneer  
Wolgemuth & Kuhns, Clerks

Farm Womer No. 14 will provide refreshments. No Hucksters allowed. 10

**Mrs. Joseph Wolgemuth**

When in need of printing remember The Bulletin.

**PATRONIZE BULLETIN ADVERTISERS**

**SCOTTOWELS** 2 large rolls 39¢  
**IONA CORN** GOLDEN CREAM STYLE 17-oz. can 10¢

**KEEBLER FUDGE COOKIES**  
**3** 14-oz. \$1 bags  
**A&P TOMATO JUICE**  
**2** 46-oz. 45¢ cans

**GRAPES** CALIFORNIA SEEDLESS 2 lbs. 29¢  
**HONEYDEWS** JUMBO 8-SIZE each 49¢  
**TOMATOES** OR STRING BEANS 4 #303 cans 45¢  
**SWANSON TV DINNERS** Frozen All Varieties pkg. 49¢  
**FACIAL TISSUES** PATRICIAN BRAND WHITE & COLORS 6 boxes of 400 tissues 85¢

<b>INSTANT TEA</b> TETLEY 3-oz. jar 75¢ <b>TUNA FISH</b> CHICKEN OF THE SEA LIGHT MEAT 2 6 1/2-oz. cans 65¢ 12 1/2-oz. can 59¢	<b>HUDSON NAPKINS</b> 200 in box 35¢	<b>DETERGENT SURF</b> SAVE 15c giant box 64¢
<b>CONDENSED ALL</b> 24-oz. 39¢ giant box 77¢	<b>DETERGENT RINSO BLUE</b> 2 large boxes 67¢	<b>DETERGENT WITH DISH CLOTH SILVERDUST</b> 2 large boxes 69¢
<b>FLUFFY ALL</b> 3-lb. 79¢ box	<b>DETERGENT TABLETS VIM</b> 2-lb., 8-oz. box 67¢	<b>CLEANER with AMMONIA HANDY AND</b> SAVE 5c 15-oz. bottle 34¢
<b>LIQUID DETERGENT SWAN</b> SAVE 13c 32-oz. plastic bottle 74¢	<b>LIQUID DETERGENT LUX</b> 12-oz. bottle 35¢ 22-oz. bottle 62¢	<b>LIQUID DETERGENT WISK</b> 2 pint cans 79¢
<b>BAR SOAP LIFEBOUY</b> SAVE 7c 2 bath size bars 26¢	<b>BAR SOAP LIFEBOUY</b> 3 regular size bars 34¢	<b>BAR SOAP LUX</b> 7c SALE 4 regular size bars 31¢
<b>BAR SOAP LUX</b> Bath Size 3 bars 44¢	<b>AEROSOL BOMB AIRWICK</b> can 75¢	<b>SHORTENING SPRY</b> 2-lb., 10-oz. can 85¢

ALL PRICES EFFECTIVE THROUGH SATURDAY, AUGUST 18th, 1962

YOUR A & P'S IN MOUNT JOY AND SURROUNDING AREA ARE LOCATED AT . . . EAST MAIN ST., MOUNT JOY • 451 EAST KING ST., LANCASTER MILLERSVILLE ROAD & LINCOLN HWY., LANCASTER 439 EAST ROSS STREET, LANCASTER  
• Mount Joy A & P Food Store does not sell Meats or Seafoods.