

HOLIDAY SLIPPERS

Put everything on easy feet. All the family likes foot comfort and good looks that come with slippers for Christmas. We have the right sizes, styles and colors for men, women and children. Come in and select now.

PRICED FROM \$2.99 TO \$5.99



Here's welcome warmth on a cold winter's morn! Oomphies 'collars' soft Persian goatskin with fluffy shearling... adds a cozy fleece lining to keep drafts out. Foam-cushion inner sole, super-flexible construction. In marvelous colors.

Gift Wrapped Free

\$5.99

JACK HORNER SHOES

MOUNT JOY COLUMBIA

Society No. 8 Observes Annual Family Night

Family night was observed by Society of Farm Women No. 8 Saturday at the Green Tree Church of the Brethren.

A covered dish supper followed by an illustrated lecture on Alaska by Dr. David Schlosser, Mount Joy, were the program features.

Approximately 75 members and their families were present.

Next meeting will be a Christmas party at the home of Mrs. Clinton Eby, N. Barbara St., Mount Joy. Members are asked to bring a 50c gift for exchange. New officers will be installed by Mrs. Elam Buckwalter, county society president.

Henning To Speak At J-C Award Banquet

Lancaster County's "Outstanding Young Farmer" of 1958 will be honored January 6, 1959, at the banquet sponsored by Lancaster County Junior Chambers of Commerce.

Pennsylvania Secretary of Agriculture W. L. Henning will be guest speaker for the Award Dinner, scheduled for the Blue Ball Fire Hall. A panel of judges will select the county's top young agriculturist for recognition in the JayCee program.

The public is invited and tickets are now available from members of the Lancaster, Strasburg and New Holland Chapters of the Jaycees, local sponsors of the event which selects a candidate for state and national honors.

Many people could retire comfortably on what their experience has cost them.

ROASTING TURKEY

Place breasts and legs in separate pans. Use a metal roast meat thermometer to determine degree of doneness. Insert it into one piece in each pan so that tip of thermometer is in the center of the heaviest muscle but not touching the bone. Cook to an internal temperature between 190 and 195 degrees. This requires about 3 hours in a moderate oven (325 degrees). The leg pieces require about 15 minutes less cooking time than the breast.

STEAMING TURKEY

Place breasts and legs in separate solid steamer pans. Steam at 5 pounds steam cooking pressure until tender, about 1 to 1 1/2 hours.

Cook bony pieces and giblets promptly to obtain broth for gravy. The cooked meat may be cut up and added to the gravy or used in salad soup the following day.

Turkey quarters will come from the large turkeys 20 to 25 pounds. A turkey quarter about 6 pounds will serve 3 to 10. A turkey quarter about 4 1/2 pounds will serve 6 to 8.

TO ROAST: Rub cavity of cut side with salt. Skewer skin to meat along cut edges. Tie leg to tail or wing to breast, depending on quarter bought. Place turkey, skin side up in a shallow pan. Grease with cooking fat. Cover with fat moistened cheese cloth. Roast at 325 degrees for 2 1/2 to 3 hours if 3 to 5 pounds (ready-to-cook weight). When done, turkey will be fork tender. Wing or drumstick should give readily when moved. If a meat thermometer is used, temperature should read 190 degrees.

Turkey may be cooked in aluminum foil. Aluminum foil wrap turkey quarter. Place on bottom of a shallow pan. Place in a pre-heated 450 degree oven. Cook to within 15 to 20 minutes of cooking time given above. Remove from pan. Fold foil away from turkey. Replace turkey to oven and continue cooking until turkey is browned, about 15 or 20 minutes. Allow to stand before slicing.

CREAM CHEESE TOPPING: Let a 3-ounce package of cream cheese stand at room temperature until softened. Stir in 1 tablespoon chopped nuts. Gradually stir in 1 to 2 tablespoons milk until the mixture is of spreading consistency. Drop by spoonfuls on surface of mince-meat filling.

ORANGE CREAM TOPPING: Fold 1 teaspoon of finely grated orange rind into 1 cup of whipped cream. Arrange orange cream on top of mince-meat filling in the form of a ring so the mince-meat filling peeks through the middle.

MERINGUE TOPPING: Beat together two egg whites and a dash of salt until stiff but not dry. Gradually beat in sugar and then continue beating until meringue is smooth and glossy and will form peaks when batter is withdrawn. Arrange on top of the mince-meat filling, being sure the meringue is sealed to the pastry all around. Bake in moderate oven (350 degrees) until meringue is delicately browned on top, about 15 minutes.

Step 1: Remove tip and second joint of wing. Use six-inch boning knife.

Step 2: Cut skin between leg and body close to leg, leaving maximum amount of skin on breast. Bend leg outward and down to snap hip joint. Continue cutting with tip of knife along the back and around the oyster cavity to remove all dark meat. Cut the connective skin so that the legs can be removed. Repeat on opposite side.

Step 3: Insert knife into body cavity at wing joint and cut through ribs along the line of rib cartilage. Repeat on opposite side.

Step 4: Separate back and breast by cutting under each shoulder blade starting at point of rib separation and cutting toward base of neck. For convenience in cooking break bony back piece in half.

News is the plural of the word "new." The Greeks word for it was "news" and it became in Anglo-Saxon "newe" and later in middle English "news." It is akin to the French "nouvelles."

Holstein Assoc. Elects Officers In Annual Meet

The largest annual meeting and banquet in the history of the United States largest Holstein Freisian county association packed the Blue Ball Fire Hall Wednesday night. The building's dining and kitchen facilities were taxed the limit before accommodating an overflow attendance of 297 Lancaster county dairymen and families.

After dining on roast turkey, members of one of the most successful local livestock breed associations in the world settled down to the serious business of outlining their program for the coming year.

Interspersed with musical entertainment and group singing, the meeting included officer's and committee reports, votes to continue and expand various projects and featured speakers.

Clarence Lyons, Lancaster, state director of the group, reported membership in the

Lancaster County H-F Association has risen to 402 registered Holstein owners and breeders.

Elvin Hess, Jr., apprised his audience of last year's county Holstein tour results and plans for the 1959 tour, which was overwhelmingly approved.

Robert H. Kauffman reported on past results and future plans for the association's Junior Project.

H. Leroy Welk, reported the per cow average price for registered Holsteins consigned to the 1958 Conestoga Classic sale was a record for the nationally famous event.

Arthur W. Nesbitt, University Park, state fieldman for the Pennsylvania Holstein Breeders, delivered a progress report on herd testing and classification. He also explained new information in handling of association work on the national level.

The audience also heard the Rev. C. D. Spotts, professor of religion, Franklin and Marshall College, speak of "Dairying down through

history and around today's world."

Lyons was awarded an engraved plaque by the group for his efforts, which were listed as "being mainly responsible for this meeting to night and the strength of the county group overall."

Hess, Robert C. Groc and Galen Herr were elected to the board of directors.

Following the banquet, the board met and elected Kauffman to the Association presidency; C. Richard Landis became vice-president; J. Lester Charles was retained as secretary, and Paul B. Hess held over as treasurer. Lyons will continue as state director.

Lots of people have great aims in life, but never pull the trigger.

Wednesday, Nov. 26 11 (The Bulletin, Mount Joy Pa.)

BOARD MEETING CHANGED

Since by law, each school board is required to meet the first Monday in December to reorganize for the following year, the Donegal Union School Board will hold its meeting next Monday. This meeting will replace the regular meeting scheduled for December 18.

LET US DO ... YOUR CHRISTMAS CLEANING EARLY!

You can look your very best in the gala holiday season, which will soon be here, if you send your cleaning to us in plenty of time. (Of course sometimes you forget. Rest assured that no matter when you bring your cleaning in, we shall do our very best to have your clothes ready when you want them.)

WE ARE YOUR CLOTHES BEST FRIEND

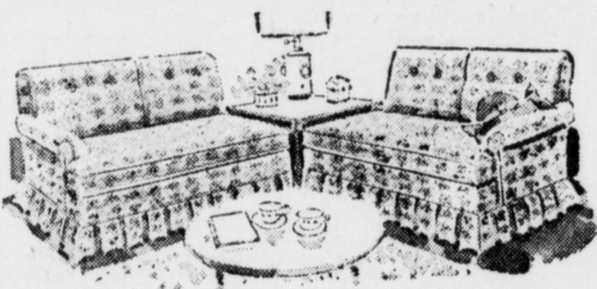
EICHERLY'S

EAST MAIN STREET, MOUNT JOY PHONE OL 3-2751

the BEST GIFT of ALL is a GIFT for the HOME

EVERY GIFT LIST... LARGE OR SMALL FINDS ITS PERFECT GIFT IN THIS STORE FOR HOMES

IF YOU WANT A GOOD INVESTMENT BUY GOOD FURNITURE THIS IS A MUST FOR YOUR HOME!!



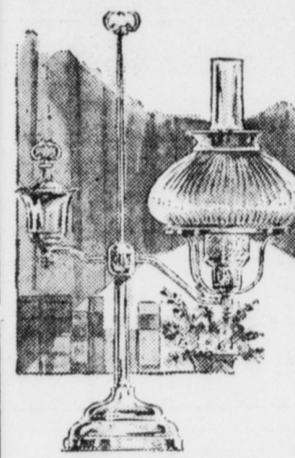
Early American by Western Carolina
Finest in Linens and Tweed Covers
PRICE \$99.50 UP

SWIVEL, TILT-BACK, LADDER-BACK, PLATFORM ROCKERS, BARREL CHAIRS, MODERN
PRICED \$32.50 AND UP
A CHAIR TO MATCH ANY TYPE OF FURNITURE



Hide-A-Beds by Simmons
Your choice of color and fabrics. Perfect for small home or apartment.

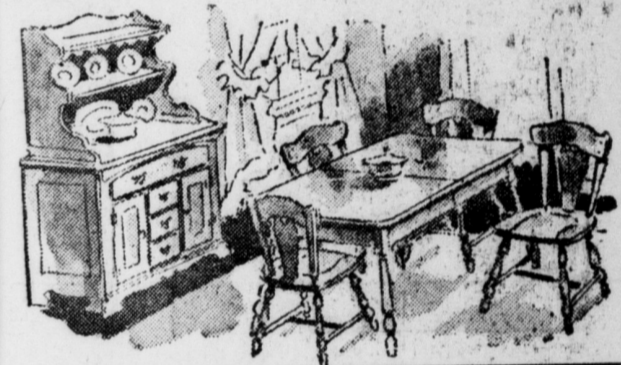
SHOP IN MOUNT JOY



AUTHENTIC STUDENT LAMP
... in polished brass with an opaque fluted glass shade. One of many.
\$12.50

REMEMBER—
Do Your Christmas Shopping at Home

The Finest in Solid Cherry or Maple, Lifetime of Dining With Pride. By Drexel and Empire - Your Choice of Pieces.



That Special Chair For Your Home
Solid Cherry Arms and Legs by Hallagan
A Perfect Chair For Any Place in the House
\$45.00



BEDROOM SUITES
In solid cherry maple, birch, walnut, by Drexel - Red Lion and Empire. Buy with pride - Get the very best.

Ask Santa For Goodrich Tires A Wonderful Christmas Present For The Man With A Car



B.F. Goodrich SAFETY TIRE SALE

NOW... the tire designed especially for NEW car owners with 14" wheels



With the biggest traction area of all winter tires

NEW NYLON TRAILMAKER WINTER TIRE

lets you GO-GO-GO thru ice, mud and snow
2 FOR ONLY 2.00 DOWN
Convenient Terms

FULLY GUARANTEED TRUCK TIRE 1995

made with the same tread design that came on new trucks for years
• FINEST TRUCK TIRE IN ITS PRICE CLASS
• FLATTER, WIDER TREAD SHRUGS OFF HEAT... WEARS LONGER

Have Your Car Inspected Today
AUTO and TRUCK REPAIRING
Forry's Texaco Station
Garber Oil Co., Dist.
FLORIN, PA. OL 3-8151

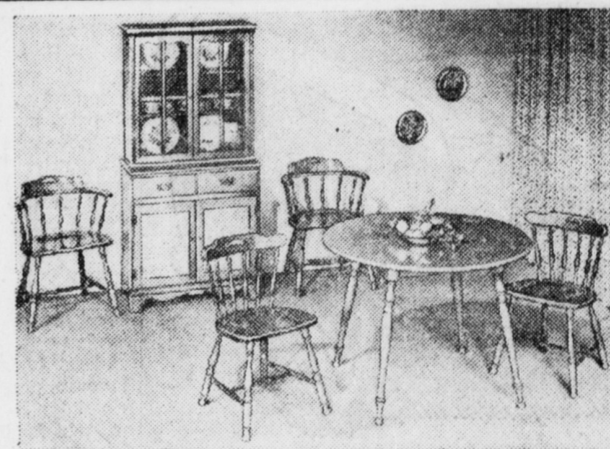


Smileage!

TABLE LAMPS
Children's FURNITURE
BOOK RACKS

SHOP IN MOUNT JOY

Use Our Christmas Lay-A-way Plan



Early American Dining Room Set by Hale
SOLID MAPLE Price \$250.00

PILLOWS
DESK LAMPS
BED SPREADS

SHOP IN MOUNT JOY

Budget Terms Available

STORE HOURS
9 TO 9
FRIDAY & SATURDAY

ETZWEILER, Inc.

Fashions In Living

15 MARIETTA AVENUE
OL 3-2731