

## ENGAGEMENTS



Miss Louise Stoop, daughter of Mr. and Mrs. Harry Stoop, Oxford Valley Road, R. D. 1, Bristol, Pa., whose engagement to G. Owen Phillips, son of Mr. and Mrs. S. G. Phillips, Pinkerton Road, Mount Joy, was announced by her parents. Miss Stoop attends West Chester State Teachers College, where she is majoring in health and physical education. Mr. Phillips is a graduate of Mount Joy high school with the class of 1954 and from West Chester State Teachers College in 1958. He will teach geography and history in Donegal high school. No date has been set for the wedding.

### LEAKWAY — FISHER

Mr. and Mrs. Christian S. Leakway, 235 Marietta Ave., announce the engagement of their daughter, Gloria A. Leakway, to Jere D. Fisher, son of Mr. and Mrs. Richard J. Fisher, 304 Ruby Street, Lancaster.

Miss Leakway is a graduate of Donegal high school and is employed by the Lancaster County National Bank. Her fiancé, a graduate of McCaskey high school, is a student at Franklin and Marshall College.

## Cafeteria Prices Are Increased

Donegal high school cafeteria prices will be increased to 30c for pupils and 40c for teachers beginning with the fall school term. Maytown Elementary School prices will remain at 25c for students and 35c for teachers for the present time. Many of the schools in the area made the change in price from 25c to 30c a year or two ago and some are now 35c.

The school lunch program has become an important part of the school system. When the program was initiated at Donegal, the cost of the "A Type" lunch, including milk, was 25c. This amount proved ample to meet the operating expenses of the department. However, during the past year, several factors developed which prevented a problem.

The subsidy rate, received from the State Department of Public Instruction, School Lunch and Nutrition, was decreased to a minimum. The cost of food and material was increased, particularly the protein foods which must be included in definite amounts. The types and quantities of food supplied under federal distribution was limited. In former years certain meats and poultry were offered under this heading which helped financially to keep expenses down.

All menus are planned with the seven basic elements in mind. Good nutrition is essential to health and education. The likes and dislikes of the student are given consideration. It is the earnest desire of the cafeteria that the students enjoy participating in the lunch program; their satisfaction and happiness during the lunch time is important.

The cafeteria personnel is

## Girl Scouts Home From Big Trip

Senior Girl Scouts, their leaders and drivers returned to Mount Joy over the weekend after spending 2 weeks touring in Canada and New England.

(To continue a description of their tour, the girls explained the second week of their trip for the Bulletin.) While camping in Nova Scotia, the group visited Peggy's Cove Aug. 16. Peggy's Cove is a fishing village along the coast with picturesque rocks and a lighthouse. They also visited a Girl Guide Camp. Back in Halifax some of the girls watched lawn bowling.

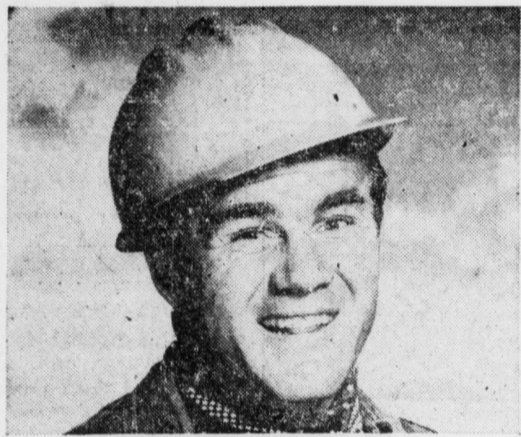
The highlight of August 17 was a visit to Magnetic Hill in Mouton, Canada. They drove their cars to the bottom of a small grade, turned off the ignition switch and it pulled the cars up the hill. Since all their equipment was wet from the rains they drove all night, went through customs back into the United States and arrived in Franconia Notch, New Hampshire Tuesday morning. The group awoke in 50 degree temperature weather. They rode the ramway to the top of the mountain, visited the Flume and saw the "Old Man of the Mountain". At Lafayette Park the group met Girl Scouts from New York and Ohio. Remaining in the Notch for another day, the group visited the Basin, a solid rock formation washed out into the shape of a basin. Next they went to see Clark's bears which are trained to do many tricks. Some of the girls went swimming at Echo Lake near the park.

Thursday morning they left New Hampshire in the direction of Pennsylvania and planned to pitch tents for the night at Bonnie Brook. An electrical storm occurred before they could prepare camp for the night so for the first night (and the last night) of the trip, they slept in a motel. Friday morning after

well trained and efficient and their work includes preparation and service of food plus the maintenance of equipment in the department. This service must be maintained as a part of the department expenses. The cafeteria is operated as a self-supporting part of the school except for the salary of the Dietitian which is included in the regular school budget.

The school board studied the situation due to rising costs and lowered subsidies and decided that the price in the high school beginning in September will be 30c for students and 40c for teachers (there is no subsidy paid on teachers' lunches.) For the present, prices at Maytown will remain at 25c for students and 35c for teachers.

**MR. MERCHANT**  
You Can Rent An Ad Space Here In Our NEXT ISSUE



"I drive a lot on construction work and I trade cars every year. After some bitter experiences with high finance charges I switched to the First National Bank and Trust Company of Mount Joy for my auto loans. My advice — stop first at the Bank with the Clock on the Corner."



**THE FIRST NATIONAL BANK and TRUST COMPANY of MOUNT JOY**  
The Bank with the Clock on the Corner  
MOUNT JOY FLORIN

OPEN FRIDAY EVENINGS TIL EIGHT  
CLOSED SATURDAY

## DAWN ANNOUNCES

The Fall Opening of Her

## DANCE STUDIO

(IN ELIZABETHTOWN)

SATURDAY, SEPTEMBER 20, 1958

REGISTRATION NOW OPEN TO ALL AGES

Classes or Private Lessons IN TAP—BALLET—MODERN BALLET

FOR INFORMATION AND APPOINTMENT PHONE EM 7-2296

## — WEDDINGS —

### NESTER — NEY

Miss Fern Arlene Nester, 242 South Market St., daughter of Mr. and Mrs. Homer A. Nester, Kempton R2, and Jay Rodney Ney, Mount Joy R2, son of Mr. and Mrs. Martin Ney, Fort Lauderdale, Florida, were married Saturday afternoon, 1 p.m. in the Chiques Methodist Church, West Main Street.



The Rev. Menno E. Good performed the double ring ceremony. The bride was given in marriage by her father. Leaving the motel at 8:30 a.m., the Scouts arrived in Mt. Joy at 8:15 p.m.

She was attended by her sister as maid of honor, Miss Janet R. Nester, Kempton. The best man was Richard Albright, Reading. Miss Esther Walter played organ music for the family wedding.

The bride's dress was a floor length organdy dress with embroidered bodice, short sleeves with a long veil and crown decorated in sequins and pearls. She carried a bouquet of pink and white sweetheart roses and white camellias. Her sister's gown was a deep pink satin ballerina length gown with matching picture hat and shoes. She carried a bouquet of pink and white roses.

Following a reception for the immediate families at 242 South Market Street, the couple left for a wedding trip to Florida. Mrs. Ney graduated from Kutztown high school and Kutztown State Teachers College. She is employed as an art teacher in the Donegal Union School District. Mr. Ney graduated from East Donegal high school and is employed at Carl Drohan Building Supplies. They will reside at 242 South Market Street.

**ADVERTISING**  
Took The Tom Cat Out Of The Cracker Barrel

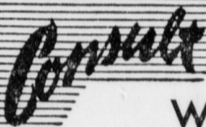
### Dr. Ralph G. Thome

Wishes to Announce

The Opening of His Office For the General Practice of Dentistry AT 17 WEST MAIN STREET, MOUNT JOY, PA.

Office hours by appointment

Telephone Oldfield 3-6552



### WILEY & RUTT

ABOUT THIS QUESTION:

"All year it's 'Open Season' on tough luck for a sportsman. Hunting, fishing, golf — all have accident hazards. Is a full time Personal Accident Policy the answer for the active sportsman?"

### WILEY & RUTT AGENCY

MAIN OFFICE: MOUNT JOY OL 3-2181  
81 EAST MAIN STREET MOUNT JOY, PA.  
LDSVL TW 8-8562 MRETA HA 6-7471

### Landisville - Salunga

MRS. MILDRED RISSER  
Correspondent

Donald Clemenson, Landisville, chief assessor of Lancaster county, and John H. Vanderzell, chairman of the Lancaster Planning Commission, are attending the tenth annual conference on Assessment Administration at Wellsboro. The conference is sponsored by the Municipal Association of Penna.

A "Hymn Sing" sponsored by the Salunga Women's Club will be held Saturday, Sept. 6th at 7:30 p.m. at the Salunga Pavilion. Everyone is welcome to come.

There will be instrumental music, quartets, Bagnoli girls will play marimba duet. Also group singing and request numbers will be sung.

The local minister will also participate in the program

The Hempfield Sertoma Club held their Wednesday evening, Aug. 20th meeting in the form of a picnic for members and their families at 6 o'clock at the Mount Joy American Legion Post home grounds.

Games for the children and adults followed the picnic supper.

The Salunga Women's club resumed their meetings by holding family night and a covered dish supper Monday evening, August 25 at 6:30 at the Salunga Pavilion.

**TREE SERVICE**  
SAWING, PRUNING and SPRAYING

**B. B. IBACH**  
Phone MO 5-4616  
139 S Main St Manheim, Pa

## New Ivy League TROUSERS

Black and Sand

FOR SCHOOL BOYS' and YOUNG MEN'S

\$3<sup>95</sup> to \$4<sup>95</sup>

## Also Fine Showing of ESSLEY SHIRTS

FOR SCHOOL

## Suit Club NOW FORMING

"The Easy Way to Buy"

## ESHLEMAN BROS.

MOUNT JOY, PA.

THURSDAY  
FRIDAY  
SATURDAY

4-5-6  
September

# GRAND OPENING

## Etzweiler Furniture Store, Inc.

15 Marietta Ave., MOUNT JOY  
Phone OL 3-2731

See the Styles You'll Love... Styles You'll Want to Live With  
Sectional Sofas—Dining Rooms—Modern Bedrooms, Etc.

So Many New Designs, New Fabrics and New Shades  
That Choosing Will Be A Delight

PRIZES — PRIZES — PRIZES

STORE HOURS 9:00 A. M. to 10:00 P. M. DURING OUR OPENING

**ETZWEILER FURNITURE STORE, Inc.**



RAINY DAY OR SUNNY--  
ACME SAVES YOU MONEY



Only 1200 stamps fill a book and they are redeemable for Nationally Advertised items.

You get CASH SAVINGS plus S&H GREEN STAMPS

SPECIAL SALE OF LANCASTER SHANKLESS

FULLY-COOKED

HAMS

55c 65c

Tender Chuck Steaks lb 49c  
Lancaster Rib Steaks lb 79c  
Lean Sliced Bacon lb 63c

SMALL, LEAN, SMOKED

HAMS

WHOLE OR BUTT CUT

LB 55c

Skinless Franks lb. Pkg. 53c  
Freshly Picked Claw Crab Meat lb. Can 69c  
Lebanon Bologna Sliced lb 79c

Lancaster Top Grade Juicy Beef  
RIB ROAST

lb 69c Center Cuts

Special Sale Ideal Small  
FRESH EGGS  
2 doz 75c

GOLDEN YELLOW  
BANANAS  
2 lbs 23c

LETTUCE Calif. Iceberg 2 hds 29c

PEARS Western Bartlett 2 lbs 29c

Fresh Green Beans 2 lbs 25c

LEMONS Calif. Sunkist doz 29c

FARMDALE GREEN PEAS 2 16 oz. Cans 29c

IDEAL WHOLE KERNEL GOLDEN CORN 2 16-oz. cans 29c

IDEAL FANCY White POTATOES 3 16-oz. Cans 29c

LANCASTER LUNCHEON MEAT 12 oz. can 39c

IDEAL STRAWBERRY PRESERVES 12 oz. Jar 29c