

GEORGE E. CARRIGER

Paint and Body Shop

Wrecks Rebuilt — Cars Painted — Body and Fender Work

Electric & Acetylene Welding

Wheels Balanced and Aligned

PHONE E-TOWN EM 7-6450

RHEEMS

Rotarians Visit New Sewage Plant

First public showing of the Mount Joy sewage disposal plant was given Tuesday noon as Rotarians visited the half million dollar plant. The inspection trip followed the noon luncheon at Host-

With Borough Secretary George Keener and Plant Operator Baxter Wells as guides, Rotarians saw the entire process—from the entry of the raw sewage at the end of the city's new sewer lines to the final discharge of the completely processed water into Little Chiques creek. Although not in complete and full operation as yet, the plant is practically completed. As volume increases and as delayed processing steps are needed the plant will come into complete operation. The trip was the second made recently by the clubmen as they have an inside look at some of the "taken for granted" activities of Mount Joy. The first tour was through the Gerberich-Payne shoe factory.

William Henry Harrison held the shortest term of any U. S. president. He died one month after taking office.

PUBLIC SALE

— OF —
GOOD USED LUMBER

Saturday, Sept. 28, 1957

ON THE MICHAEL ECKERT FARM, FORMERLY KNOWN AS THE ALPH SHERER FARM, BETWEEN MANTONVILLE AND MOUNT HOPE.

Beginning at 1:00 P. M.
Lot of 3x4; 3x6; 4x6; 6x8; 6x6, all lengths up to 20 feet, 20 rafters 9 ft. long; 8 rafters 3x5, 12 ft. long; 18 rafters 3x4, 12 ft. long.
1,500 feet weatherboarding, tongue and groove.
Lot of 3x6; 3x5; 2x4; 6x6, all lengths.
Lot of flooring.
Lot of 1 ft. boards, planks.
Lot of barn doors, all sizes.
Lot of roofing and glass.
9 joist 3x8, 14 ft. long.
Lot of galvanized and aluminum roofing; 2 steps, 2 feed chests with troughs, 2 feed racks.
Lot of roofing slate, 12x22.
Lot of items too numerous to mention.

John Kilmer, Auctioneer **John S. Wolgemuth**
39-1c

PUBLIC SALE

— OF —
REAL ESTATE and PERSONAL PROPERTY

Saturday, Sept. 28, 1957

ON THE PREMISES LOCATED IN THE BOROUGH OF ELIZABETHTOWN AT 224 COLLEGE AVENUE.

Lot 50x188 ft., thereon erected a



2 1/2 Story
Frame House

covered with insulate brick siding, containing eight rooms and bath; cellar under entire house; new oil burner, forced hot air heat; gas hot water heater; storm doors; screen doors; storm windows, FOUR-CAR GARAGE.
This property is in very good condition and a good location. Arrangements to view property can be made by calling Elizabethtown EMpire 7-1251. Immediate possession can be given.

Also at the same time and place the following personal property will be offered for sale:

Large G.E. Refrigerator with freezing compartment; large gas range; kitchen cabinet; small cabinet; kitchen stool; kitchen chair; 3-piece living room suite; buffet; large bookcase with two drawers; bedroom suite; double bed, spring, and mattress; single bed spring and mattress, one innerspring mattress like new; dressers; washstands; marble-top bureau; night table; knee-hole desk; desk chair; kitchen table; extension table; library table; small tables; card table; two 9x12 rugs; 8' 3"x10' 6" rug; new and used braided and hooked rugs; Philco Radio; magazine rack; chairs; rocking chairs; clothes tree; hall rack; two pine blanket chests; small pine table with drawer; plank-bottom chairs; two high-backed rockers; bridge, floor and table lamps; clocks; fernery; mirrors; pictures; picture frames; hassock; window fan; quilts; comforts; counterpanes; linens; bathroom scales; jardinières; baskets; Electric Sweeper, tank model; electric pop-up toaster; electric sandwich toaster; electric waffle iron; electric iron; Mixmaster; electric steam radiator; 92-piece Laurel China Dinner Set; 2 doz. cut glass goblets; one set of cake pans, 9", 10", 12", and 14"; dishes; cooking utensils; aluminum colander; thermos jug; jellies; canned fruit; lantern; small bench; lawn bench; porch chair; ironing board; new brooms; mops; three stepladders; lawn mower; lawn roller; lawn sweeper; edger; garden tools; Speed Queen Washer, like new; Speed Queen double tubs; buckets; tray wheelbarrow; vice; garbage can; empty jars, jugs, and crocks; garden hose; extension cords; four recapped tires 600x16; and a lot of articles too numerous to mention.

Sale to start at 12:30 P. M., real estate to be offered at 2:00 P. M., when conditions will be made known by Alfred C. Alspach, Attorney
Walter Dupes, Auctioneer
Landis & Kravbill, Clerks

Elsie Smith
37-3c

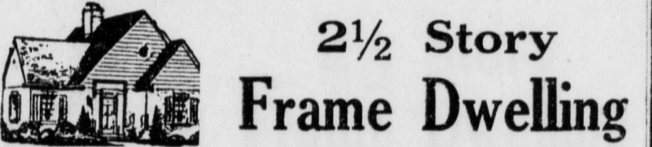
PUBLIC SALE

— OF —
REAL ESTATE and PERSONAL PROPERTY

Saturday, Oct. 12, 1957

The undersigned will sell at Public Sale on the premises along road leading from "S" turn in Mt. Joy-Manheim road to Back Run road in Rapho Twp., Lancaster County, Penna.

All that certain tract of land containing 12 acres, more or less, adjoining lands of Jno. Breneman & Peter Witmer. Erected thereon is a



2 1/2 Story
Frame Dwelling

with asbestos shingle-siding, with WASH HOUSE & SUMMER KITCHEN ATTACHED. Dwelling has 7 rooms, and bath, electric, water pressure system, electric Hot Water Heater.

FRAME BARN with electric and water
This property is in excellent condition and can be inspected anytime on or before day of sale.

PERSONAL PROPERTY
Frigidaire chest type freezer, used 2 years, Crosley Shelvador refrigerator, G. E. Range, 17" Motorola T. V. set, Monarch coal range, Duo-therm oil room heater with blower, coal heatrola, Easy spin washer, like new, Kenmore Elec. sweeper, Simmons metal twin beds, springs & mattresses, 2 double beds and springs, 3/4 bed & spring, dressers, chest of drawers, 2 bureaus, 2 wash stands, dining room table, 1/2 doz. dining room chairs, 1/2 doz. kitchen chairs, 3 pc. living room suite, china closet, high chair, cedar chest, 1 small chest, 1 large chest, 2 trunks, rocking chairs, chairs, wood chest, small tables, kitchen cabinet, lamps, large copper kettle, iron kettle, ironing board, electric iron, card table, wooden commode, canned fruit and vegetables, feather tick, linens, bedding, bed spreads, pictures, old express wagon, Blue parakeet & cage, cooking utensils and numerous other articles not mentioned.

FARM EQUIPMENT
Farmall "A" tractor, with plow & cultivator, McCormick tractor-manure spreader on rubber, like new, tobacco planter, 3 section spring harrow, 2 section spring harrow, disc harrow, grass mower, 24 ft. extension ladder, tobacco press, 1,500 tobacco lath, tobacco boxes, lawn mower, etc. etc.

Refreshments served by the Farm Women Society #2. Sale to begin at 12:30 P. M. Terms by

Harvey W. Spangler
Gertrude M. Spangler
J. H. Ruhl, Auctioneer

AUXILIARY PLANS MEMORIAL SERVICE

Twenty-two members of the auxiliary to the Mt. Joy Friendship Fire Company attended a picnic meeting last Thursday at the Little Chiques Creek Playground. Following a picnic lunch and games, a business meeting was held.

The group decided to hold the annual Memorial Service in the First Presbyterian Church Sunday, Oct. 13. The ladies will meet at the firehouse to proceed to the church in a group with the firemen. Happy Birthday greetings were sung to Mrs. Harold Etsell. Mrs. Geo. Co-Church will hold a rummage penheaver, president, was in charge of the meeting.

The Bulletin, Mount Joy, Pa. Thursday, September 26 5

ON LEAVE
Wesley Gary Epler, Florin, son of Mr. and Mrs. Sylvester G. Epler is spending 2 weeks leave at home, upon completion of basic submarine school at New London, Conn. He will report to U. S. Submarine Pacific Fleet Administration, Mare Island, California, from there he will be assigned to the U.S.S. Cusk operating out of Pearl Harbor.

RUMMAGE SALE
The Woman's Society of the Mount Joy Methodist Church will hold a rummage sale, Friday, Oct. 18 from 9 a. m. to 9 p. m.

PUBLIC SALE

— OF —
PERSONAL PROPERTY

Friday Eve'g, Oct. 11, 1957

ON THE PREMISES IN THE VILLAGE OF BAINBRIDGE, ALONG ROUTE #241.

Large G.E. Refrigerator with freezing compartment; New Tappan Gas Range; dinette set; kitchen cabinet; sideboard; twin beds with springs and mattresses; bedroom suite; wash stand; 3-piece living room suite; two 9-12 rugs; occasional chair; chairs; rocking chairs; two Estate Heatrolas; coal oil room heater; highchair; library table; small tables; card table; radio, table model; Rexair Electric Sweeper and attachments; Bissel Sweeper; clocks; pedestals; drop-head sewing machine; bookcases; two-seated wooden lawn swing; porch swing; ironing board; stepladder; aluminum clothes line, umbrella type; electric washer; double tubs; express wagon; lawn mower; Hamilton Beach Mixer; electric coffee maker; electric iron; electric waffle iron; electric sandwich toaster; electric G.E. Pop-up Toaster; dishes and cooking utensils; canned fruit; empty jars, crocks, and jugs; garden tools; digging iron; stone bar; small bars; electric motor; and a lot of articles, too numerous to mention.

Sale to start at 6:30 P. M., when conditions will be made known by Walter Dupes, Auct.
Landis & Garman, Clerks

W. H. Hackenberger
39-3c

PUBLIC SALE

— OF —
VALUABLE REAL ESTATE

Wednesday, Oct. 9, 1957

AT 2:00 P. M.

The undersigned will offer at Public Sale: All that certain farm situate in Rapho Township, Lancaster County, Pennsylvania, 1/4 mile North of Erisman's Mennonite Church along the Manheim and Mt. Joy Road. Containing 95 Acres 70 Perches, more or less.

Improvements consist of a

12 Room
Stone
House



Containing oil furnace with hot water heat, bath with hot water connections, all slate roof except corn barn and butcher house.

Tobacco shed for 12 acres with dampening cellar; wash and butcher house with concrete floor and drain; garage for 3 cars and shop; chicken house; hog pens with room for chickens above; barn with concrete yard. Buildings just painted this summer.

There is a pond on the farm with water by gravity to the barn. You want a real farm, don't miss this one. The house may be seen September 23, October 5 and the morning of the day of sale.

Sale to be held on the premises on the above date when terms and conditions will be made known by: Henry E. Shreiner, Auctioneer
A. H. Young, Attorney **J. Daniel Eshleman**
39-2c

ANNUAL LANCASTER COUNTY

Aryshire Auction

Thursday, Oct. 3, 1957

At 1:00 p. m.

Sale will be held at the sales pavilion 6 miles East of Lancaster along Rezie 30.

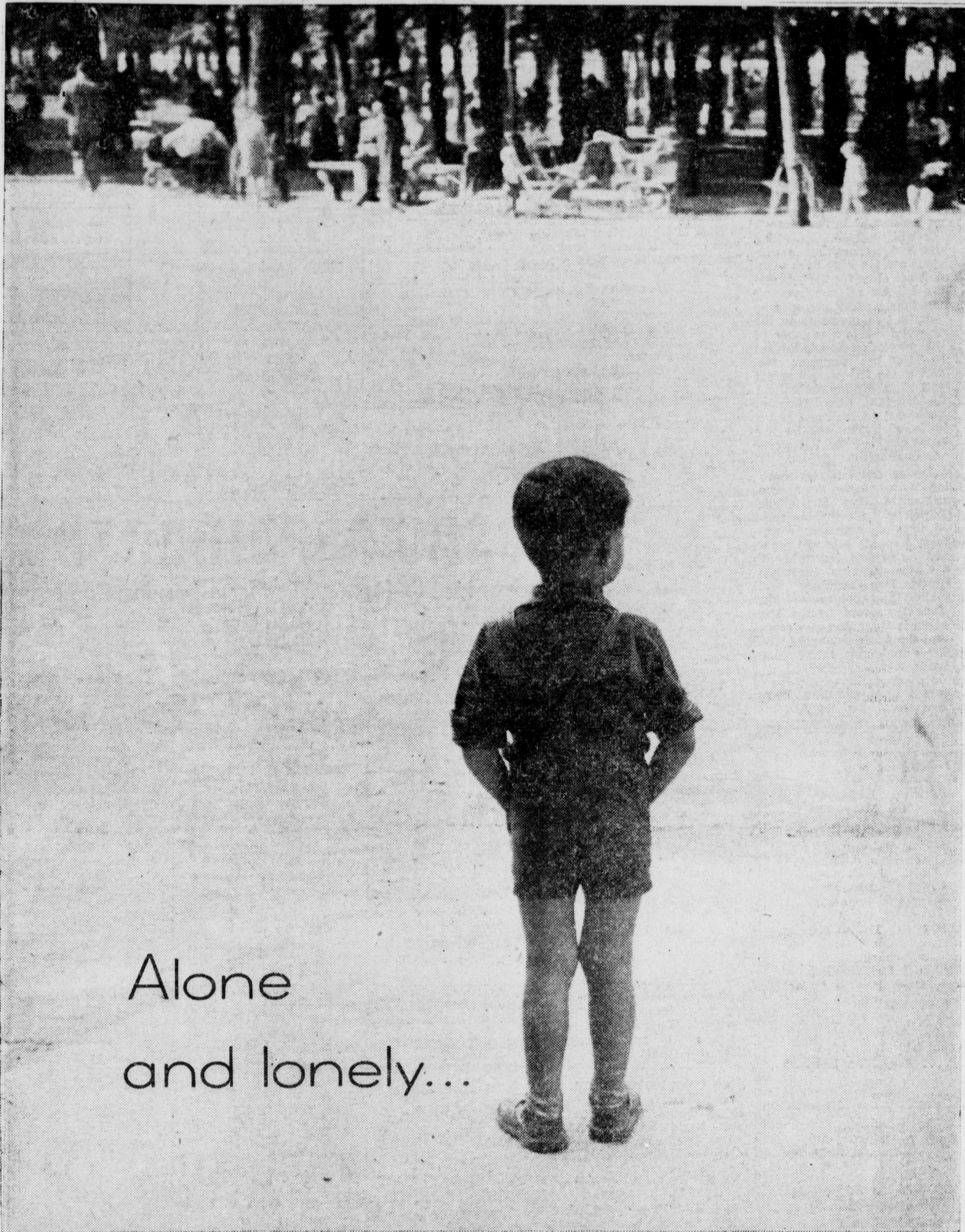
35 Head Fresh
4% Milk Cows
2 BULLS

Certified Blood Tested, T.B. Accredited & Vaccinated

This is a real selection of good big young fresh Cows, weighing up to 1,500 lbs. and milking up to 60 lbs. per day. Cows selling with their own Records up to 13,160 Milk, 593 of fat. Young bull selling is out of a Cow with 4 records over 12,000 lbs. milk and 590 lbs. fat, all 305 day records.

If you need fall and winter milk it will pay you to see these cattle the evening before the sale. All sell regardless of price.

Lanc. Co. Ayrshire Breeders Ass'n
Ray Boutwell, Pres., Ellis Mentzer, vice president; Leon Kreider, Sec'y. Sale Committee, Everet Kreider, John Paes, Milton Brubaker, chairman.
Paul E. Sanger, Sales Mgr. & Auctioneer,
Lebanon, Penna. 39-1p



Alone
and lonely...

YOU CAN HELP HIM--

by Giving the United Way!

Lancaster County's United Campaign
Needs \$841,806

FOR 22 RED FEATHER AGENCIES, PLUS THE RED CROSS

Give Enough For All!

You Help More When You Give
The United Way!

THIS AD CONTRIBUTED AS A PUBLIC SERVICE BY

First National Bank & Trust Co.
MOUNT JOY — FLORIN

Union National Mount Joy Bank
MOUNT JOY — MAYTOWN