

...with JAMES C. INGEBRESEN
President, Spiritual Mobilization

A recent Wall Street Journal news story told of current advances in the manufacture and use of industrial measuring instruments: tolerances that before the war were held to a thousandth of an inch moved up to ten-thousandths of an inch during the war and are now being held to millionths of an inch.

"It would seem that man's progress could almost be measured against the increasing ability to divide the inch into smaller and smaller increments," says A. V. Bodine, president of Bodine Corp., Bridgeport, Conn.

True, as far as man's mechanical progress is concerned. The goal of mechanical perfection cannot be reached, but it is being more and more closely approximated.

But what about man's moral and spiritual progress? Are we decreasing, or increasing. The moral tolerances we allow ourselves?

Industry is finding that the near-perfection that once was regarded as "ideal but impractical" is eminently practical. Why do we not see that moral goodness that strives toward perfection is just as practical — instead of considering it, as most of us apparently do, "so far in the realm of idealism" as to be largely a joke.

BY APPOINTMENT
Dr. David E. Schlosser, 304 E. Main St., has announced that, for the convenience of his patients, office hours will be by appointment. This schedule will go into effect on July 1. He stresses that cases of sudden illness and emergencies will be seen at any hour, regardless of appointment.

What, We Call News

Have You Been Visiting ?

Had Visitors ?

Been Divorced ?

Been Jilted ?

Got Engaged ?

Joined a Club or

Been Thrown Out of One

Had An Accident ?

Bought Anything ?

Sold Something ?

Had a Party ?

Been To One ?

Had Triplets, Quads or

Even a Baby ?

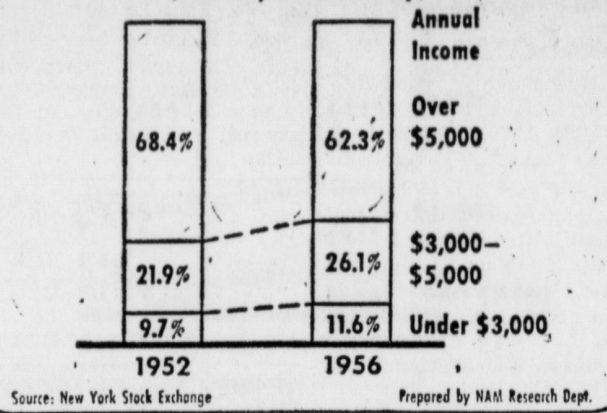
That's News. Please Tell Us So
We Can Print It And Tell
Your Friends

The BULLETIN

MOUNT JOY

Phone 3-9661

SHAREHOLDERS CLASSIFIED BY INCOMES (Publicly owned only)



More than 10 million men and women own shares in American business and industry, according to a recent analysis by the National Association of Manufacturers, and two-thirds of all these shareholders live in households earning less than \$7,500 a year.

Shareholders with annual incomes of less than \$3,000 increased from 9.7 per cent of the total in 1952, to 11.6 per cent in 1956. Those shareowners earning \$3,000 to \$5,000 a year also registered a substantial gain — from 21.9 per cent to 26.1 per cent of the total during the same period. Those with annual earnings over \$5,000 declined percentage-wise — from 68.4 per cent to 62.3 per cent. Of the more than 10 million total, 8,630,000 — (an increase of 33 per cent over 1952) — own shares in companies whose stock is traded on securities exchanges or is owned by at least 300 shareholders, and 1,400,000 own shares in companies whose securities are restricted to a relatively few shareholders.

314 Women Are Members of 39 Legislatures

State legislatures number 314 women among their elected members this year, as against the record high of 308 last year.

Republican women far outnumber Democratic women law makers, according to Miss Bertha S. Adkins, assistant chairman of the Republican National Committee. The distaff lineup: Republican, 204; Democrat, 107; Liberal, 1; unaffiliated, 2.

Men-only legislatures still exist in Alabama, Arkansas, Georgia, Iowa, Kentucky, Louisiana, North Carolina, Oklahoma and Wisconsin.

Theodore Roosevelt was the first American hero to have ticker tape dumped on him as he rode in a parade.

• Schock Home (From Page 1)

their husbands. Further, because women live longer than men and because women marry men, on the average, three years older, widowhood in this country is of nine years duration. Men left without a wife tend to remarry women considerably younger. Widows do not remarry, he said.

The first woman selected to enter the Mount Joy home has been selected already, he said. She is a Lancaster woman.

A camel can run about 16 miles an hour.

NOTICE

I Will be Closed
June 29 to July 8

Izella's Beauty Shop
PINKERTON ROAD
MOUNT JOY

The Following List of Numbers FOR AWARDS DURING Our Grand Opening HAVE NOT BEEN CLAIMED

Winners Have Until
The Close of Business Sat., June 29th
TO OBTAIN THEIR PRIZES

After That Date Prizes Will
Be Re-Awarded

- 3798 - 3799 - 3838
- 4188 - 4494 - 4740
- 4744 - 4754 - 4758
- 4760 -

Forry's Texaco Station

W. MAIN STREET FLORIN, PA.

Dr. H. C. Killheffer Optometrist

MANHEIM
163 S. Charlotte St.
Telephone 5-2942
Mon. & Wednes. 9-5:30
Tues., Fri., 7-9
Sat. by appointment

ELIZABETHTOWN
2nd Floor Claus
Phone 7-4163
Tues., Fri., Sat.
9:30-1:00, 2-5 P. M.

WARD BOTTLE GAS

Special for July

20 gal. Water Heater—Glasslined

10 YEAR GUARANTEE

Usually \$88 July Only \$65

Open Mon. - Sat. 7-5. Town Store, 25 S. State St., Ephrata. Office, 1 mile N. of Ephrata on Rt. 222. Town Store open Fri. night until 9 P. M. Other evenings by appointment.

we've got
furnace oil
that's

triple-
refined!



Atlantic's famous triple-refined fuel gives you a three-way advantage. You get cleaner burning, steadier heat with fewer repair bills. A NEW ingredient helps prevent sediment from forming in your tank—resists clogging of lines, filters, nozzles. Make sure that you meet the cold weather ahead with dependable, economical, automatic heat. Call or write us NOW.

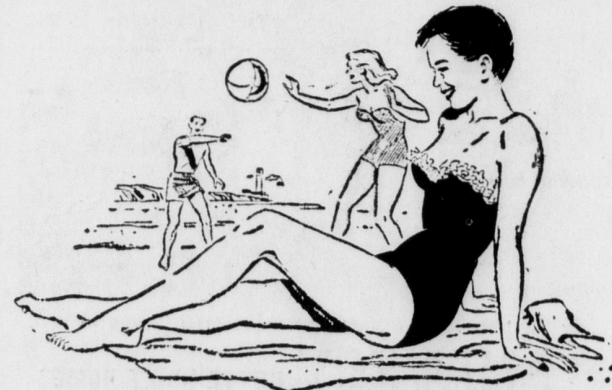
Hollinger Oil Service

FLORIN, PENNA.
Phone Mt. Joy 3-3483
LEHIGH AVENUE
LANCASTER, PA.



CLOSED
FOR
VACATION

EICHERLYS
WILL CLOSE
July 1-2-3-4-5
Open Saturday, July 6
8:00 A. M.



TRAVELERS CHECKS

get you there
and back
SAFELY

\$1.00 per \$100.00 at our bank

OPEN FRIDAY EVENINGS 'TIL EIGHT
CLOSED SATURDAY



The FIRST NATIONAL BANK and
TRUST COMPANY of MT. JOY
MT. JOY --- FLORIN
All Deposits Insured up to \$10,000 with F.D.I.C.



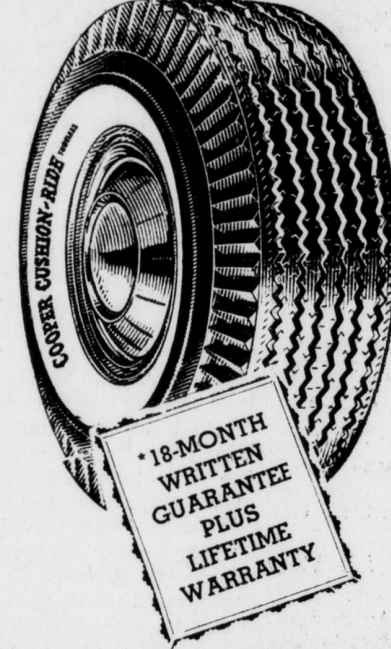
Your solution
to burglary...

Be prepared with insurance protection. Our low cost policy covers financial losses due to burglary. See us soon.

Wiley & Rutt Agency

85 EAST MAIN ST.
PHONE 3-6911
MOUNT JOY, PA.

SNYDER GARAGE SPRING TIRE SALE



COOPER CUSHION RIDE

First Line Tires
• DOUBLY GUARANTEED
IN WRITING
• SAFEGUARD CONSTRUCTION

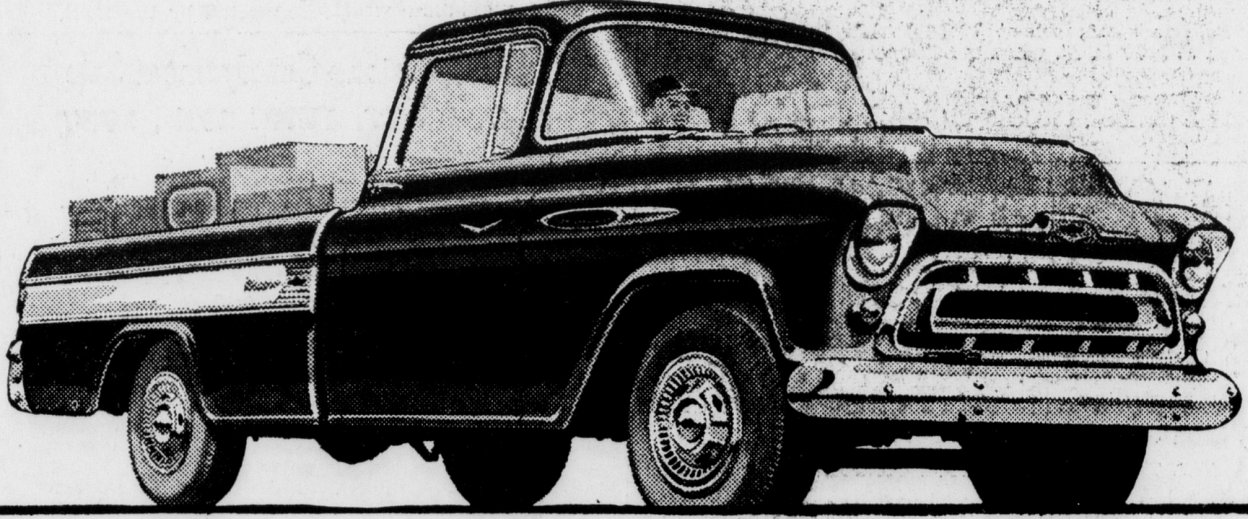
List Price \$26.65
SALE PRICE

\$15.95

Plus Tax
AND RECAPABLE CASING
6.70-15 Black Wall
White Walls & Tubeless
ALSO BARGAIN PRICED

BUY TODAY — DON'T DELAY

SNYDER GARAGE Mount Joy R. D. 2
ONE-HALF MILE WEST OF FLORIN ON ROUTE 230



Brawny beauty that knows how to work—the high-styled Cameo Carrier!

Hard-working pickups that know how to save... both Chevies

Choice of gas-saving 6 or high-performance V8!

More usable load space—no inboard wheelhousings!

Husky bodies with hardwood floors... steel skid strips.

Be sure to see other Chevy pickups with the new 98-inch box or the extra-big 108-inch box—and the new 4-Wheel Drive models with G.V.W. ratings up to 7400 pounds!

*Optional at extra cost.



Here's the most popular pickup in America!

Only franchised Chevrolet dealers display this famous trademark
CHEVROLET
SEE YOUR LOCAL AUTHORIZED CHEVROLET DEALER