

## Egg Hunt Plans Are Completed

Plans are nearing completion for the third annual Easter Egg Hunt for the children of the area which will again be sponsored by the Walter S. Ebersole Post 185 American Legion.

The sponsoring group is tentatively expecting to hide approximately 2,000 eggs for the hunt. They also hope to award fifty prizes. This will be an increase over last year in both the number of eggs being hidden and the number of prizes to be awarded. Last year over 750 eggs were hidden and approximately 20 prizes were given.

Chairman Germer needs assistance in egg decorating for the event. Eggs will be painted Friday evening, April 19, at the posthome.

The hunt will be held on Saturday afternoon, April 20, at the post grounds. Jack Germer heads the committee in charge of the affair. Chairman Germer announced that transportation will be provided for children from Mount Joy. They are to meet at the Union National Bank at 2:15 p. m. The hunt will begin at 2:30 p. m.

## Annual Old Timers

(From page 1)

George Kirchner, sports editor of the Lancaster New Era, will be the speaker.

Out of town old timers who will attend, who thus far have made reservations are: Bernie Santaniello, ex-line football coach of Millersville State Teachers College and now Assistant Fire Chief of the Lancaster City Dept.

Mahlon Ranek of Philadelphia, ex-football manager of All-Lancaster.

Ed Richter of Newark, Delaware, ex-gym instructor of the Mt. Joy Old Timers and teacher of Donegal high school; Frank Shenny Sterback of St. Joe C. C. of Lancaster, former football star of the club.

Harris Gabe Martin of Wrightsville, former baseball player.

J. Arthur Hoffer, former official of the Old-Timers.

Lewis Gent of Lititz and Bill Sample of Columbia.

Bulletin advertisement pays.

The Bulletin, Mount Joy, Pa. Thursday, April 18

## Ambulance Transports Eight

Eight trips were taken by the local community ambulance last week Sunday, April 7. Mrs. Charlotte Ginch was taken to the Lancaster General Hospital by drivers Irvin Kaylor and Robert Williams with Mrs. Robert Hoffmaster as accompanying nurse. Monday, Lincoln Bingham, Kaylor's Restaurant, West Main Street, was taken to the St. Joseph's Hospital by drivers George Copenhauer and Richard Hoover. The same day Betty Fitzpatrick, West Main Street, was taken to the St. Joseph's Hospital by Mr. Copenhauer and John Myers with Mrs. Joseph Germer as accompanying nurse.

Tuesday, April 9, Mrs. Shaeffer, W. Donegal Street, was taken to the Lancaster General Hospital and returned home again the same day by John Myers and Richard Hoover. The two drivers took Mrs. Edith Erb, Columbia R1 to St. Joseph's Hospital, the same day with Mrs. Germer as nurse. A third trip for the day included taking Mrs. Wisegarver, East Main Street to the Harrisburg Hospital by the same drivers and nurse.

Friday, April 12, Mrs. Dan-

"Easter Parade,"—Bing Crosby

"Easter Parade,"—Guy Lombardo

"The Holy City,"—Jesse Crawford

"The Holy City," "The Palms," "Before the Crucifix,"—Fred Waring on 45 E.P.

"Hallelujah Chorus,"—Robt. Shaw Corale on L.P.

WAY'S Appliances

48 W. Main St., Mount Joy

Phone 3-3622

WAY'S Record Corner

WAY'S Appliances

WAY'S Appliances

WAY'S Appliances

WAY'S Appliances

WAY'S Appliances

WAY'S Appliances

Stelman, Lancaster Road (near Landisville), was taken to the Epler Rest Home, Mountville, by Miller Wolgemuth and Charles Frey. Saturday, Park Eberle was escorted to the St. Joseph's Hospital by Samuel Dock and John Myers with Mrs. Germer as nurse.

"Treaty Oak" in Austin, Texas, was selected by the American Forestry Association as the most perfect specimen of a tree in the couple.

## EASTER DANCE IS EASTER MONDAY

An "Easter Spring Dance" will be held Easter Monday, April 22, in the Maytown Elementary school gymnasium. The auxiliary of the Maytown American Legion is sponsoring the dance which is scheduled for 8 to 11 p. m.

Music will be provided by the Highlanders. Admission will be forty cents per person or seventy cents per specimen of a tree in the couple.

Step out in style for the Easter parade

Don't Just Watch The Easter Parade

BE IN IT

- WITH -

Fine Clothing

SHIRTS SHOES  
HATS NECKWEAR

(For Men and Boys)

You Must See Our Spring Merchandise ON DISPLAY

ESHLEMAN BROS.  
MOUNT JOY, PA.

# Lancaster BRAND HAMS

for Easter...

SHANKLESS AND READY-TO-EAT

Shankless Half; lb **51<sup>c</sup>**  
Butt Half; lb **61<sup>c</sup>**

Small, Lean Skinned Smoked

# HAMS

Full Shank Half **43<sup>c</sup>** lb  
Full Butt Half **53<sup>c</sup>** lb

Slices of these Hams **19<sup>c</sup>** lb

With your Easter Ham or Turkey—Serve  
**OCEAN SPRAY Cranberry Sauce**  
16-oz can **19<sup>c</sup>**

Imported Canned Hams 2 lb can **\$1.99**  
Lean Sliced Bacon lb **45<sup>c</sup>**  
Lancaster Bacon Sliced lb **69<sup>c</sup>**  
Freshly Ground Beef 3 lbs **99<sup>c</sup>**

You Can Rely Upon Acme for the Best Eggs - - and Lowest Prices

We have the Eggs for your Easter Festivities and you can depend upon the Acme because it's the place where most people buy their eggs the year 'round. Quality and Freshness assured - - yes, every egg is fully Guaranteed - - and prices are the lowest in town.

Gold Seal Large Fresh Eggs **49<sup>c</sup>** doz

McCormick's Pure Colors pkg 25c | Paas Decorating Kit pkg 39c

BAKERY TREATS

EASTER GLORY LAYER CAKES  
Large home-style Virginia Lee Coconut Layer Cake with attractive bunny to top it off. each **79<sup>c</sup>**

Special This Week! Reg. 33c  
**HOT CROSS BUNS** pkg of 8 **29<sup>c</sup>**

REG. 19c PLAIN RYE BREAD 2 lbs 35c  
**SUPREME BREAD**

Today's supreme bread value - - large loaf **19<sup>c</sup>**  
soft and fresh - - why pay more?

FARMDALE ENRICHED BREAD lb loaf 16c  
HOME-STYLE BREAD 1/2-lb loaf 23c

Coffee Down Again!

Acme brings you extra savings on these flavorful, heat-flo roasted blends

ASCO COFFEE WIN-CREST COFFEE  
NOW lb **89<sup>c</sup>** NOW lb **83<sup>c</sup>**

Green Giant Peas 2 17-oz cans **35<sup>c</sup>**

Fruit Cocktail Del Monte or Ideal No 2 1/2 can **37<sup>c</sup>**

Grape Juice Ideal Pure Concord 24 oz bot **29<sup>c</sup>**

Stuffed Olives Olivar Spanish 4 1/2 oz jar **35<sup>c</sup>**

Del Monte Drink Pineapple Grapefruit 2 46-oz cans **49<sup>c</sup>**

Special for Easter! Sunnydell Ice Cream 1/2-gal ctn **79<sup>c</sup>**

Weston Cookies DIXIE MALLOWES pkg 33c  
PEACH APRICOT BARS pk 45c

Fresh Mayonnaise Hom de Lite pt **35<sup>c</sup>**

Princess Margarine 2 lbs **39<sup>c</sup>**

Pillsbury Biscuits or Borden's 3 pkgs **29<sup>c</sup>**

Hawaiian Punch 3 46-oz cans **\$1.00**

Prices Effective thru Sat. April 20, 1957. Quantities subject to change.

make your "Bunnies" jump for joy!

**Acme SUPER MARKETS**  
Where Quality Counts and Your Money Goes Furthest

ACME GIVES GREEN STAMPS

ACME QUALITY, PAN-READY FRYING  
**CHICKENS** lb **33<sup>c</sup>**  
OVEN-READY, FANCY YOUNG HEN (10 lbs and over)  
**TURKEYS** lb **45<sup>c</sup>**  
LANCASTER U. S. CHOICE BEEF  
**POT ROAST** lb **39<sup>c</sup>**

Lancaster Canned Chickens 3-lbs. 3-oz **\$1.19**  
Arctic Seal Fish Sticks 3 pkgs **85<sup>c</sup>**  
Haddock or Perch Fillets lb **39<sup>c</sup>**  
Fillets of Flounder lb **59<sup>c</sup>**

The Pick of the Crop for Your Easter  
35c SIZE JUICY FLA. VALENCIA  
**ORANGES** doz **29<sup>c</sup>**

U. S. 1 FLORIDA  
**NEW POTATOES** 5 lb bag **23<sup>c</sup>** 10 lb bag **45<sup>c</sup>**

TENDER, GOLDEN FLORIDA  
**SUGAR CORN** 5 ears **29<sup>c</sup>** Spread with Louella Butter

Ideal Asparagus Spears 10-oz pkg **39<sup>c</sup>** All Green  
Beautiful Potted Flowers at Most Acme Markets  
Note the low prices and make your selection while variety is at its best

Donald Duck Orange Juice 6-oz cans **85<sup>c</sup>**

Sunshine Sliced Strawberries 5 10-oz pkgs **99<sup>c</sup>**

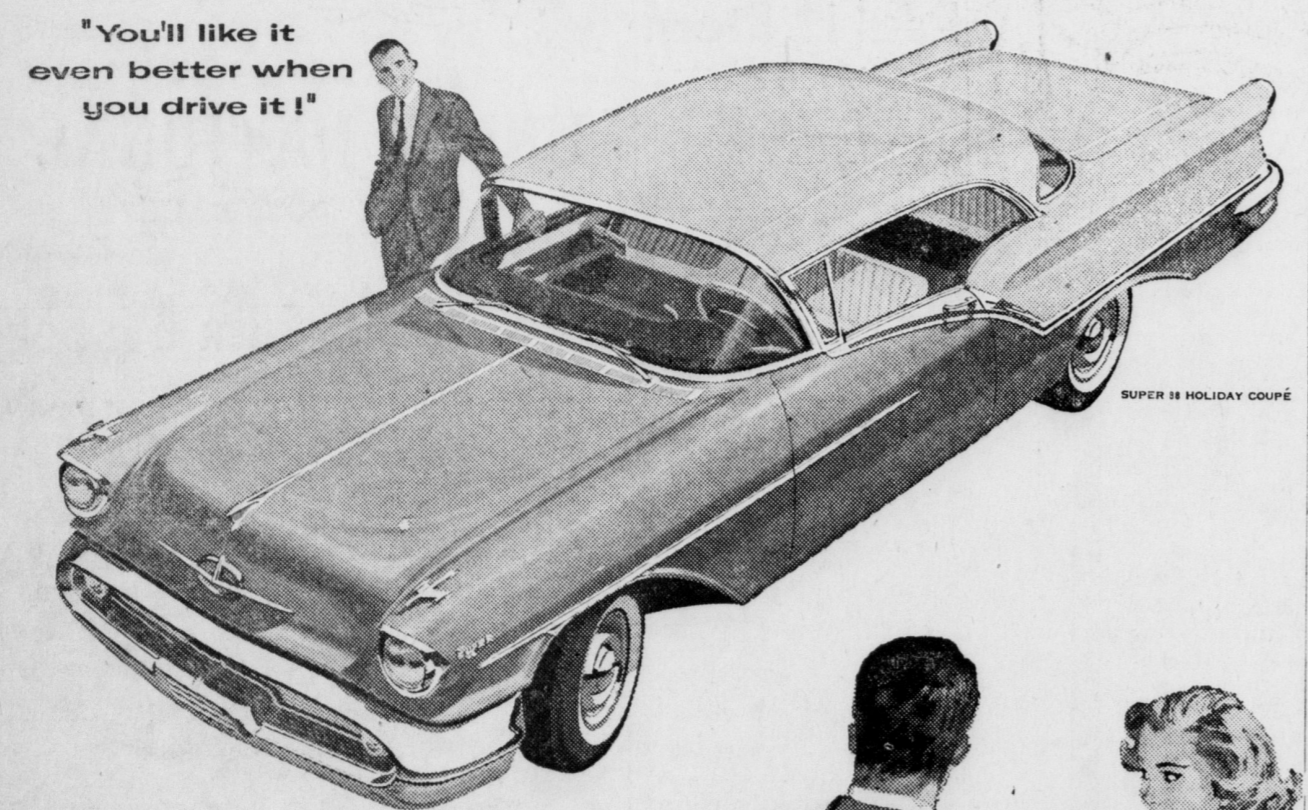
NEW! Seabrook Farms Cream Style Corn 2 10-oz pkgs **35<sup>c</sup>**  
Decorative Wreaths for Easter (with stand) ea **\$1.99**  
Glenside Park Grass Seed 5 lb bag **\$1.89** Vigoro, Peat Moss, etc.

Serve the Best at Easter - - America's Prize-Winning Sweet Cream  
**LOUELLA BUTTER** 1/2-lb **69<sup>c</sup>**  
Richland Butter lb **67<sup>c</sup>**  
Longhorn Cheese lb **49<sup>c</sup>**  
Extra Sharp Cheese lb **79<sup>c</sup>**  
Glendale Sl. Cheese 1/2-lb **29<sup>c</sup>**  
Anne Summer's Delicious Chocolate Easter Eggs Butter Cream, Fruit or Coconut 4-oz **19<sup>c</sup>** 8-oz **35<sup>c</sup>** 16-oz **65<sup>c</sup>**

**LOW, LOW PRICES and S.N. GREEN STAMPS**

# OLDSMOBILE

STYLED TO SMART EASTERN TASTES



"You'll like it even better when you drive it!"

Neighbor: Say, your new Olds sure looks like a lot of car!  
Olds Owner: That's nothing, wait'll you take a ride.  
(A few minutes later:)  
Neighbor: Man-oh-man, where'd all that power come from? I've never felt anything like that before!  
Olds Owner: That's Oldsmobile's new J-2 Rocket Engine!  
Neighbor: What's that? Tell me how it works.  
Olds Owner: When you're driving under ordinary conditions, it uses only one carburetor. That means economy with a capital E. But when you need a sudden burst of power, for safety's sake, you just press the accelerator three-quarters of the way down—and two additional carburetors cut in!  
Neighbor: In other words, with J-2, you can have economy when you want it and power when you need it. That's for me!  
Olds Owner: Better see your Olds dealer. He's expecting you!

SEE YOUR AUTHORIZED OLDSMOBILE QUALITY DEALER