

Donegal Mobile Homes

Aldus (Red) Hannan
E. William (Bill) Pontz,
Proprietors
PLUMBING and SERVICE
ROUTE 230
MOUNT JOY 3-4516

A. H. 'Al' Peifer

Sales Representative
Garber Motor Co.
40th Year . . . Ford-Mercury
ELIZABETHTOWN
PHONE 7-1181 10-1fc

Dr. H. C. Killheffer Optometrist

MANHEIM
163 S. Charlotte St.
Telephone 5-2942
Mon. & Wednes. 9-5:30
Tues., Fri., Sat. 7-9 P. M.
ELIZABETHTOWN
2nd Floor Glass
Phone 7-4163
Tues., Fri., Sat.
9:30-1:00, 2-5 P. M.

OLIVER SAGER & SON

Ditch Digging - Septic Tanks Installed
Field Drainage - Footings - Grading
Hauling - And Light Jobs
Port. Air Compressor - Concrete Breaking
Top Soil and Fill
Rock Drilling

R. D. 1 ELIZABETHTOWN
PHONE 7-1256 11-1

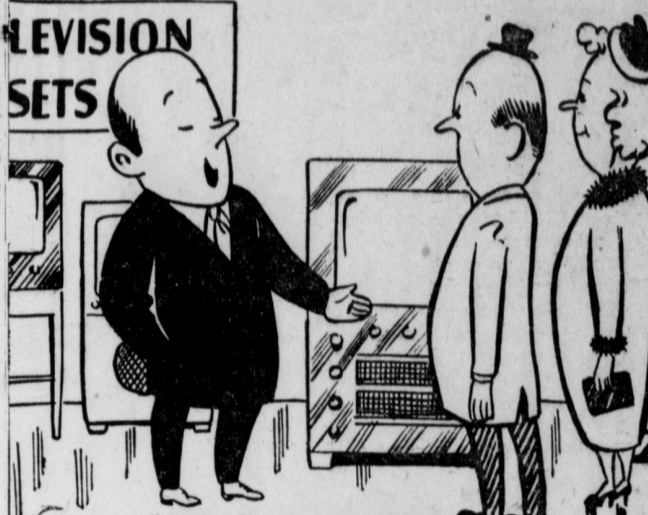


PLAN FOR those who heat with oil!

We call it our Burner Service Parts Plan. It absolutely assures you year-long, trouble-free heat. We service your oil burner, replace any necessary parts.
We make prompt deliveries of Atlantic's famous triple-refined heating oil—now with a new additive that helps keep down harmful sludge and sediment. You get clean, steady, uniform heat all over the house.
Please write or call us today and we'll give you full details about our Burner Service Parts Plan. Act now and you can forget all about any heating problems.

ATLANTIC HEATING OILS
Hollinger Oil Service
FLORIN, PENNA.
Phone Mt. Joy 3-3483
LEHIGH AVENUE
LANCASTER, PA.

TELEVISION TIME



"This is our Deluxe model... It also washes dishes!"

Gives Tips On Saving Gas

Although the efficiency of engines and fuels has increased greatly in the last three decades, economical operation of a motor car still depends upon the driver, according to Samuel T. Milliken, Service Manager of Keystone Automobile Club.

He pointed out that drivers who adjust city driving to traffic flow and timing of traffic signals can cut fuel consumption nearly in half. By lowering open country speeds by 20 miles an hour, savings of about 25 per cent can be achieved.
He also listed the following tips on economical driving:
1. A light foot on the throttle can save up to half the gasoline when starting and shifting gears.

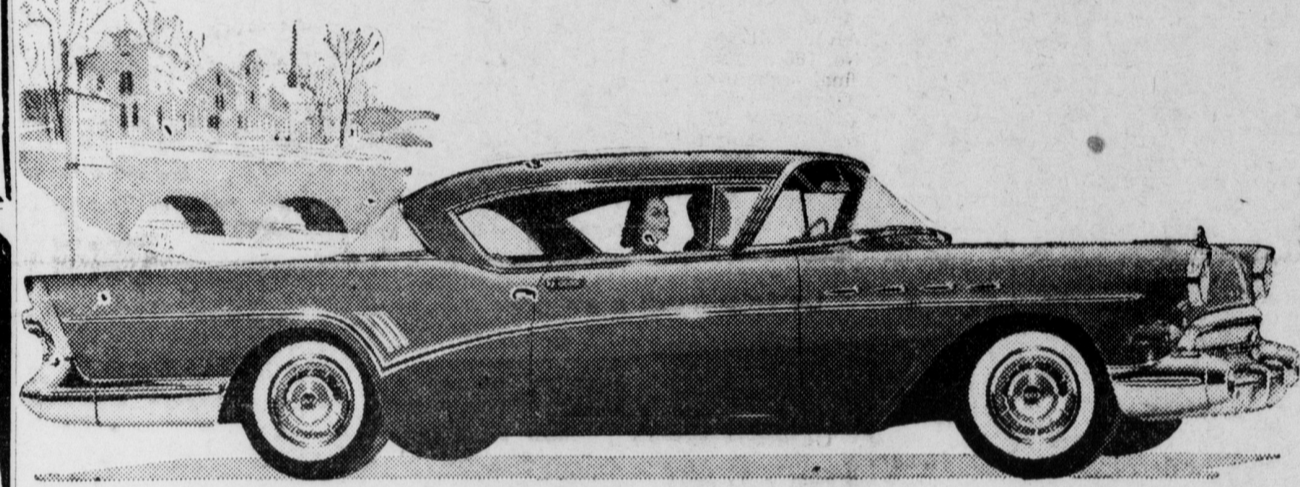
2. Go easy on the accelerator when the engine is cold.
3. Fill the gas tank often; air in the tank mixes with the fuel and leaves moisture which may cause corrosion inside the motor.
4. Never overload the engine. Shift into lower gears as necessary, avoid surging the throttle, and let the motor act as a brake in stops.
5. Crisscross tires on the wheels and spare rim every 5,000 miles. And keep tire pressure at exact level . . . no more, no less.
6. Use the right weight oil. Incorrect weight can cost as much as seven-tenths of a mile per gallon.
7. Keep the air filter clean. Change exhaust lines and muffler every 30,000 miles.
8. Make sure all battery connections are tight and corrosion-free.
9. Have complete car check-up twice a year.

Set Out Three Rules For Christmas Mailing

Pointing out the need for every. Then, sort your Christmas cards accordingly, tie them in two separate bundles with each address facing the same way, and attach the correct label to each bundle.
Early mailing of all Christmas gifts and cards is the biggest factor in getting everything delivered before Christmas, according to the Postmaster. The whole Christmas mailing period is a battle against time. Delays now in getting your Christmas cards and gift packages to the Post Office may cause a slow-up along the line. Then, there's always the danger that commercial shipments and incoming Christmas mail will conflict with the outgoing operations.

Donegal Plans Special Service

A special "openhouse" is being planned for the Donegal high school Thursday, Dec. 6. The event is being sponsored jointly by the school and the PTA group. Following a spot-check in several classes, the result proved that in some classes as high as 50% of the students' parents have never seen the school.
The committee is urging the parents to come to the school that evening to inspect the building and note the progress being made in the various departments. This openhouse is scheduled for 7 to 8:30 p.m. Following this period, a band concert will be held in the auditorium plus a business meeting of the PTA.
Man and monkeys are the only animals that are not normally color-blind.



For '57 Styled long and low - with lots of GO!

(Try the instant response of Buick's New Dynaflo*)

We'll admit it quite frankly.

"New" is a word that's used a lot. But seldom has it meant so much that's fresh and different and better-than-before—as here in the newest Buick yet.

Take the new styling, because that's so obvious even at a glance. To get it so sweepingly low, the engineers started right from the bottom, with a brand-new type of chassis construction.

It's an ingenious "nested" chassis that reduced car height as much as 3.4 inches, giving new lowness and raciness to the styling—without reducing road clearance below or room inside.

It's a massive I-beam, X-frame chassis that's stronger and sturdier—and permits a new low center of gravity that gives this Buick far surer, far safer roadability.

That's the picture on style and beauty and rugged brawn in every '57 Buick

But no such picture can give you the feel

of this automobile's new instant go.

Only when you take the wheel can you appreciate the new era of motoring pleasure and ease and safety brought about by Buick's new power-pitch response.

It's instant response—response set off by the hair-trigger action of a new 364-cubic-inch V8 engine and the full-range flexibility of a new Variable Pitch Dynaflo.

It's response so eager, this Buick seems to anticipate your every command. Power flashes to the rear wheels so quickly and smoothly in "Drive," that the need for "Low" has virtually been eliminated. Even Dynaflo's famous switch of the pitch is seldom needed.

Come try it. Come see and feel the tremendous difference the newest Buick yet can make in your driving enjoyment.

*New Advanced Variable Pitch Dynaflo is the only Dynaflo Buick builds today. It is standard on Roadmaster Super and Century—optional at modest extra cost on the Special.

Newest Buick Yet

WHEN BETTER AUTOMOBILES ARE BUILT BUICK WILL BUILD THEM

S. F. ULRICH, Inc.

505 North Market St.

ELIZABETHTOWN, PENNA.

FOUR ARE GIVEN LIFE MEMBERSHIPS

Four persons received life memberships in the Missionary Society of the local Trinity Lutheran Church during the annual Thankoffering Service Sunday evening. O. K. Snyder, Jr. for his service to the church and Mrs. Bruce Brown, for her service in the Primary department were given the honor by the society; Mr. and Mrs. George Brown III were given the memberships by Mr. and Mrs. George Brown II.
Mrs. Clyde Eshleman is president of the society and Mrs. Raymond Gilbert is life membership chairman.

Personalized Christmas Greetings



ADAM H. GREER
JEWELRY & GIFT SHOP
MOUNT JOY, PENNA.

DR. JOHN H. STAUFFER
OPTOMETRIST
39 E. Main St., Mt. Joy, Pa.
Telephone 3-8411
Mon. to Sat.—10 a.m. to 4:30 p.m. Tues. & Fri. 6 to 8 p.m. Closed all day Wednesday.

L. D. KLINE

Contractor - Builder
KITCHEN CABINETS
BUILT-UP ROOFS
R. D. #1 COLUMBIA, PA.
Phone 48217 - Free Estimates
Rt. 340 - 1 mi. E. Marietta

BUSINESS DIRECTORY

Convenient Reference To Firms Serving Community

AUTOMOBILE DEALERS ELI AMENT - AUTHORIZED DE SOTO - PLYMOUTH Sales - Service Dodge "Job Rated" Trucks Delta & Henry Streets MOUNT JOY, PA. Phone 3-4264	FARM MACHINERY N. G. MYERS & SON FARM SERVICE Allis-Chalmers Sales and Service RHEEMS Ph. E-town 7-3593	MEMORIALS KEENER MEMORIALS Phone Marietta 6-3531 MAYTOWN, PA.
RHEEMS GARAGE STUDEBAKER - PACKARD Sales and Service Raffensberger - Risser RHEEMS Ph. E-town 7-1230	KAYLOR BROS. CASE FARM EQUIPMENT Sales and Service Hardware Supplies & Paints RHEEMS Ph. E-town 7-4221	MACHINE SHOP MYERS MACHINE SHOP General Machine Shop Work Clutch & Brake Drum Repair Clutch & Brake Drum Truing Knife Grinding - Welding 119 N. POPLAR ST. ELIZABETHTOWN Phone 7-4206
NISSLEY MOTORS LINCOLN - MERCURY Sales - Service Parts and Repairs Main and Vine Sts. MIDDLETOWN, PA. Phone WH44662	SMITH'S GENERAL STORE Fresh Meats Frozen Food - Groceries Clothing Wear FLORIN Ph. Mt. Joy 3-5781	MOVING & HAULING ED. KEENE Moving & Hauling 268 Marietta Avenue Phone 3-8612 MOUNT JOY, PA.
CHRYSLER - PLYMOUTH Sales - Parts - Service See the beautiful Chrysler PAUL H. STERN MANHEIM Ph. 5-2193	WILEY & RUTT AGENCY Investments & Insurance 85 E. Main St. Ph. 3-6911 MOUNT JOY, PA.	OIL COMPANIES GARBER OIL COMPANY TEXACO PRODUCTS Gasoline - Motor Oils Grease - Fuel Oils B. F. Goodrich Tires & Tubes 5 S. Barbara St., Ph. 3-9331
AARON G. LONGENECKER BUILDING CONTRACTOR MOUNT JOY R.D. 2 Phone 3-6091 Millwork - Fill - Grading Topsoil - Excavating Lumber - Kitchen Cabinets	JONES & ZINK, Inc. INSURANCE & REAL ESTATE Local Representative FRANKLIN ZINK 3-8561 MOUNT JOY	PAINING AND PAPERHANGING J. ELWOOD BRUBAKER Interior - Exterior Painting and Paperhanging FLORIN, PENNA. Successor to E. C. Brubaker PHONE 3-4520
CLEANERS CLEANING - PRESSING TAILORING Rug and Fur Cleaning Storage - Laundry Service EICHERLY'S You Phone 3-4071 We Call	WARREN H. STEHMAN Insurance Service Square Street FLORIN Phone Mt. Joy 3-6712	PLUMBING H. S. MECKLEY & SON PLUMBING - HEATING & OIL BURNERS Sales and Service 15 W. MAIN Ph. 3-5983
DAIRY PRODUCTS ELWOOD MARTIN PENSUPREME PRODUCTS MILK & ICE CREAM R.D. 2 Phone MT. JOY 3-8191	ROBERT E. HOFFMAN Insurance for every need Phone 3-6659 MOUNT JOY, PA.	SERVICE STATIONS ZERPHEY SICO STATION Valvoline Oil Car Washing & Lubrication Amoco Tires & Batteries MT. JOY ST. Phone 3-9162
ELECTRICIAN WOLGEMUTH, Inc. MOUNT JOY 3-9681 Plumbing and Heating Prompt Service	JEWELERS KOSER'S JEWELRY ORDINARY RINGS fit the knuckle only they twist and have to be fingered. "TRU-FIT" RINGS slide over the knuckle—they adjust automatically to fit perfectly. MAIN, ST. Ph. 3-5404	TIRES Kelly Springfield Tires and Service GEO. W. LEAMAN MAIN STREET Ph. 3-9351
FURNITURE KEENER'S FURNITURE Carpet - Window Shades Bedding - Venetian Blinds MARIETTA ST. Ph. 3-5601	LOAN SERVICE "Money When You Need It" Justalment LOAN SERVICE, INC. H. A. Myers, Manager	TELEVISION DAY & BERRIER MOTOROLA - ZENITH ADMIRAL Sales and Service 29 W. MAIN ST., MT. JOY PHONE 3-8421
FLOOR COVERING H. B. LONGENECKER SALUNGA, PA. Floor Covering All Types of Tile Venetian Blinds Mohawk Carpets Pittsburgh Paints Ph. LANDISVILLE 4012	LUNCHEONETTE KULP'S LUNCHEONETTE NEWS AGENCY Magazines - Toys - Gifts Fountain Service MOUNT JOY, PA. 18 W. Main St., Ph. 3-6891	WELDING Electric Acetylene and Portable WELDING Wagon & Truck Body Bldg. R.D. 1 MOUNT JOY Phone 3-4957 JOHN H. LUTZ
TAKE STEPS TO BUSINESS SUCCESS	LAWN MOWER SERVICE M. M. WOLGEMUTH REO POWER MOWERS Sales and Service Lawn Mowers Sharpened Ph. 3-4868 Mt. Joy FLORIN	G WOOD SHOP FURNITURE REPAIRING AND REUPHOLSTERING Cabinet Making - Woodwork Open Daily 9 a.m. to 5 p.m. Saturday Noon GIEG'S WOOD SHOP 160 W. High St., Maytown