

It Will Pay You— To Pay Attention To This Ad

If You Need It Now or In The Future

OUR CHRISTMAS DISPLAY IS OPEN WITH ITEMS FOR THE SHOP, HOME and BASEMENT

Fiberglass Insulation 16"-24" Wide
STANDARD .05½ sq. ft.
FULL THICK .07½ sq. ft.

Youolite Pouring Insulation

32 lb. bag : 1.53 per bag
25/32" 2x8 EXTERIOR INSULATION .13 sq. ft.
½" 4x8 EXTERIOR INSULATION : .08 sq. ft.

HOMOSITE ½" THICK : .10 sq. ft.

215 LB. RUBBEROID ROOF SHINGLES : 8.00 per sq.
25 LB. ROOFING : 2.70 per roll

⅛" STANDARD HARDBOARD .08 sq. ft.
⅛" TEMPERED HARDBOARD : 10½ sq. ft.

FLUSE DOORS 1⅜" Mohogany-Gum-Birch : 6.75 up
CALDER OVERHEAD DOORS All Styles & Sizes 81.50 up

WHITE PINE BOARDS : .20 sq. ft.

Phone Elizabethtown 7-1349

MARTIN BUILDERS' CENTER, INC.
212 W. HIGH ST. • ELIZABETHTOWN, PA.

Teacher Attends Conference

H. Morrell Shields, instrumental teacher at Donegal high school, will attend a 3-day conference today, Friday and Saturday in Harrisburg. The 1956 conference of the P.M.E.A. (Pennsylvania Music Educators Association) is held for all music directors of the state.

The program of the three-day affair consists of choral reading of new music, band reading sessions of new music, displays of instrument manufacturers and publishers clinics, business meetings, panel discussions, and special music groups.

ASSEMBLIES PLANNED

A special assembly has been planned for the students of Donegal High School for Tuesday, Dec. 4. Adam Shaffer, traveler, will discuss and show motion pictures on "South of the Border". Mr. Shaffer has traveled in Mexico and Central America.

Friday, a sports program will be presented at the assembly program of the day when all fall letters will be awarded. The coaches and athletic director John Day will present letters to players of football, soccer and field hockey.

CORN-FED TURKEYS



Dressed or live weight
BROAD-BREASTED

Eugene S. Kreider
R. D. 2 MOUNT JOY, PA.
PHONE 3-9036 40-tfc

THE AMERICAN WAY



The Parasite

Kiddies To Hold Annual Sale

For the third year, a Christmas cookie and pie sale is being planned by the Mount Joy Elementary School and Home Association. The sale will be held Friday, Dec. 14, in the Roberts Electrical Store, East Main Street, beginning at 4 p.m.

All the parents of school set aside three million acres of land, located in the Texas Panhandle, to finance it.

PUBLISHERS SEEK COURT REVERSAL

The fight for the people's right to know and to preserve freedom of the press in America received a fresh charge of ammunition this week.

The Pennsylvania Newspaper Publishers' Association announced it will ask the U. S. Supreme Court to reverse a decision of the Pennsylvania Supreme Court which empowered a county judge to bar news photographs in a public court house.

The case stems from a rule issued in February, 1954, by the Westmoreland County Court. At that time the court prohibited news photographs from being taken any place on the premises of the county court house during a session of the court or during recesses between sessions.

Another "rule" known as Canon 35 which allows judges to prohibit news photographs within the court room is not being contested in this case. Rolland L. Adams, PNPA president, points out that the Westmoreland rule is an extension of that judge's power beyond his court room to a blackout on the public court house. The Press of Pennsylvania feels this is a flagrant violation of press freedom and the people's right to know what's going on.

The Westmoreland County Judge, Edward G. Bauer, issued the censorship order during the trial of the famous turnip kee killer John Wesley Wable, who was later found guilty and executed.

Later a test was brought about through the cooperative efforts of the Pittsburgh Post-Gazette, Greensburg Tribune-Review and PNPA in protest of the court house picture ban. When the case reached the Supreme Court of Pennsylvania, the lower court's startling extension of power was upheld in a three way split decision.

Legal counsel for PNPA has now taken steps to appeal the Pennsylvania decision to the U. S. Supreme Court.

PRIZE WINNERS ARE NAMED FOR PARTY

Prize winners are announced from the public card party held Monday night by the auxiliary of the local fire company. Mrs. Kathryn Stehman won the door prize and Mrs. Josephine Gillham and Mrs. Margaret May, the drawings. Prize winners in card playing were awarded to Carrie Shade, Mrs. Harold Feilenbaum, Lester Erb, Mrs. John Landis, F. A. Eshelman, Mrs. Lee Ellis, Grace Benner, Mrs. Amos Newcomer, B. J. Leibensferb, R. M. Knight, Mrs. John Hank, Edward E. Zink, Mrs. Mildred Zerphey, Amos Newcomer, Mary Kelly, Mrs. John Reigle, Josephine Gillham, Dora Erb, Ruth Bradley, E. Mumma, Earl Derr and Mrs. Geo. Shenck.

The auxiliary wishes to thank all those persons who contributed to the party.

Patronize Bulletin Advertisers.



OUT ON A LIMB

By Stumpy McCulloch

Folks down my way like to tell 'bout the time Clarence Darrow, the famous lawyer, came to town to give a lecture to the women's club. After he'd finished talkin', the ladies all applauded wildly, and the club president congratulated him. "Oh, Mr. Darrow," she gushed, "how can we ever show our gratitude and appreciation to you?"

"My dear woman," Darrow replied, "ever since the ancient Phoenicians invented money, there has been only one answer to that question."

Well, sir, us farmers like to make a good livin' from our work, too. I heard some good news about tree farming lately—from up in Wisconsin. Up there, on the 52-acre Champion Valley timber forest—which the state operates to show the value of good woodland management—a fellow figured a tree farmer can make at least five dollars an hour for his work at logging time!

Here's how he figured. November sales, at Champion Valley, amounted to \$1185. The harvest required 126 man hours of work, and \$189 for chain saw and skidding expenses. Taxes would have run about \$52, if the forest hadn't been publicly owned. That leaves a net income of \$944, or \$7.49 an hour for timber work!

That shows what can be done on a well-run tree farm. According to one expert, a tree farmer can make as much money as any other kind of farmer if he'll follow two rules: He should harvest mature timber at frequent intervals. And he should never cut more than the natural growth between harvests. Put that in your pipe and smoke it!

But not in the woods, folks, please! Do you know what causes the most forest fires? Take a guess—lightning, arsonists, or the average citizen?

Yep, I'm afraid you guessed it. We do. Ninety per cent of all forest fires are started by folks who are careless with cigarettes, matches or camp fires.

Which reminds me of a story Orville Bier, up in Boise, Idaho, told me. Seems a lady saw a boy smokin' on the street one day. She marched up to him and said indignantly, "Does your mother know you smoke?" The kid took the cigarette out of his mouth, blew a smoke ring in her face, and replied, "Nope. Does your husband know you speak to strange men in the street?"

See you next week!

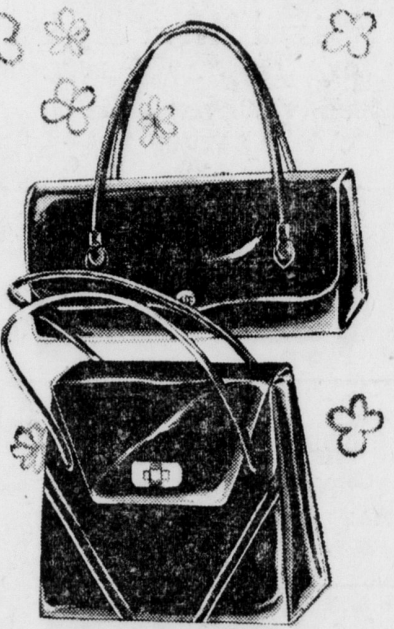
MUSCULAR DYSTOPHY RESULTS RELEASED

A total of \$122.28 was collected in the recent drive to Muscular Dystrophy funds in Mount Joy and \$43.55 was collected in Florin. This was the first year that a drive was conducted in the two communities.

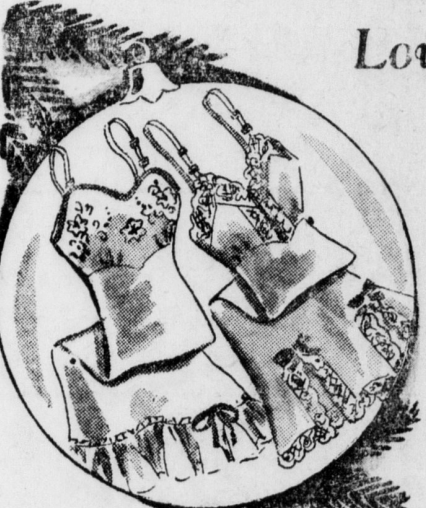
The drive was conducted primarily by school students in both Mt. Joy and Florin. Thanks are extended to the students who volunteered to assist in the drive in the two towns.

SANTA SPECIALS AT MURPHY'S

Patent Plastic Bags



\$1.77 plus tax
Also CALF PLASTICS in...
Navy
Red
Brown
Black
Absinthe



Lovely Slips
Rayon Crepe
Rayon Satin
Sizes 32-40
\$1.28

Each of these pretty slippers would make an excellent gift! Some are of rayon crepe with embroidered tops and ruffled hems. Others are of rayon satin with lace trimmed tops and hems. Wide adjustable shoulder straps.

CHRISTMAS CARDS

50 TO A BOX

All Bright New Patterns and Verses - Regular \$1.00 a box

ONLY 88c

Mon. Tue. Wed.
Thur. 9:00-5:30
Fri. - Sat.
9 till 9

G.C. Murphy Co.

14-16 W. Main Street
MOUNT JOY, PA.

RCA VICTOR
Big Color TV
now only \$495.00



Enjoy all the new colorcasts in color... See black-and-white shows on the same set!

BIGGEST VALUE in color TV history! This is the Aldrich—and like all RCA Victor Big Color sets, it brings you 254 square inches of viewable "Living Color" picture. Now you can really see the big color shows that are coming up. One network alone—NBC-TV—will present more color programs than ever before! And it's all yours with the dependable, easy-to-tune Aldrich! Arrange to see a demonstration of dependable Big Color TV—come in today!

For UHF: UHF-VHF tuner optional, extra.
BLACK-AND-WHITE COLOR
Each RCA Victor Big Color TV receives both color and black-and-white shows—that's why it's Compatible color TV! It's like having 2 sets in 1!

Ask about the exclusive RCA Victor Factory Service Contract
H. S. Newcomer & Son, Inc.
MOUNT JOY, PA.

DUO-THERM
OIL BURNING
FULL SIZE, BIG CAPACITY, GENUINE
Space Heaters
— While They Last —
20% OFF
20% OFF
Here's your chance to buy that new space heater at a Great Reduction — Price will be reduced as long as our stock lasts. All models.
Keener's Furniture
Carpet - Bedding
MOUNT JOY, PENNA.

BUY BECKER BETTER TURKEYS
LIVE OR DRESSED
Delivered To Your Door
Norman Becker
DIAL 3-5639 MOUNT JOY, PA.