

SATURDAY, AUG. 25, 1956

95th Keystone Consignment Sale

At the Keystone Sales Barn on Route 230 just east of Mount Joy, 10 miles west of Lancaster, Penna.

SALE STARTS AT EXACTLY 1:00 P. M. CERTIFIED VACCINATED ACCREDITED

60-Purebred Holsteins-60

From Smitholm Farms, Springville, Pa.

Al and Dick are again sending a group of "Wilke" daughters like the group which were appreciated so well last August. The Smitholm herd was classified on July 18th, of the 15 "Wilke" daughters classified, 2 were "Very Good", 12 "Good Plus", 1 "Good", 93.3% "Good Plus" or better.

The greatest group of 2 year olds we have ever had

From Jim Henderson's Strathaven farm: Four daughters of "Eminent", three from Hays Inspiration dams with 510, 595 and 713 lbs. fat.

Five daughters of Farland R A Master, whose first 3 daughters to calve have all milked over 60 lbs. and up to 75 lbs. on 2x. Also daughters of: Rockwood Rocket Tone, Regasborne R A Royal Governor and Elm-croft Abbecker Memory.

We have never had finer cattle.

KEYSTONE HOLSTEIN SALES, Inc., Pennsylvania's Holstein Market MOUNT JOY, PA.

Carl Diller, Refton, Pa. Clarence E. Lyons, Mgr. Auctioneer. 201 Hess Blvd., Lancaster, Pa. Phone: Lancaster 4-5965

PUBLIC SALE

A VALUABLE FARM

Saturday, Sept. 1, 1956

The undersigned will offer for sale on the premises located along road from Milton Grove to Chiques Church of the Brethren (just 1/4 mile south of Chiques Church) in Rapho Twp., Lancaster County, Pennsylvania.

All that certain tract of land containing 53 acres more or less, land in high state of cultivation. 7 acres of meadow with streams.

Erected thereon is a



2 1/2 Story STONE DWELLING

with 8 rooms, and laundry room attached, electric, bath, water pressure, system, electric hot water heater.

FRAME BANK BARN with Corn Barn and Implement Shed attached

equipped with water and electric, room for 14 dairy cows; part of barn converted for poultry to accommodate 1200 layers.

CONCRETE BLOCK HOUSE and 4 CAR GARAGE with egg cellar on ground floor. Will accommodate 350 layers.

3 BROTHER HOUSES AND 1 POULTRY HOUSE. Persons desiring to view the premises may call on same anytime on or before day of sale.

Sale to begin at 2:00 P. M. Terms by

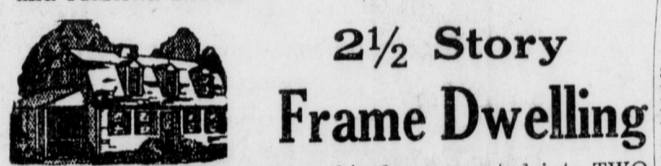
J. H. Ruhl, Auct. Rev. Arthur H. Brubaker 32-2c

PUBLIC SALE

OF VALUABLE REAL ESTATE & PERSONAL PROPERTY

Fri., Eve'g, Sept. 7, 1956

In the Borough of Mount Joy, at life corner of Delta and Marietta Streets.



2 1/2 Story Frame Dwelling

covered with white asbestos shingles, converted into TWO APARTMENTS, one apartment containing 5 rooms and the other apartment containing 6 rooms; automatic oil furnace, hot water heat, screens, storm windows and storm doors; large porch

CONCRETE BLOCK AND FRAME GARAGE 40x25' attached to house.

This property is in very good condition; heating plant has been used four years; remodeled into apartments 1 1/2 years ago.

Arrangements to view premises can be made by calling Mount Joy 3-5931, if no answer call 3-8881.

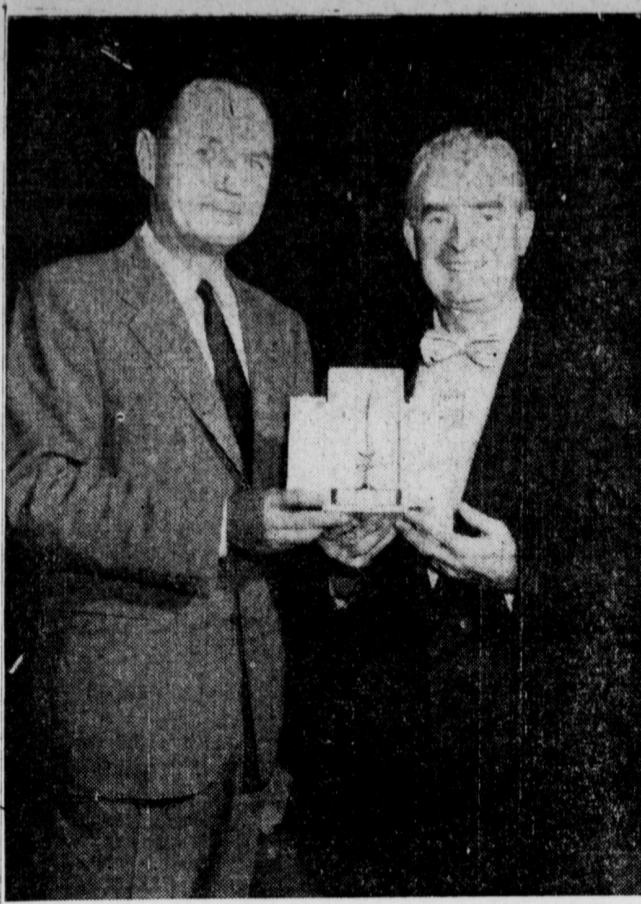
Also at the same time and place the following household goods will be offered for sale:

Bedroom suite, spring, mattress, single bed, spring and mattress, dressing table and stools, cedar wardrobe, cedar chest, metal wardrobe, 8 cu. ft. General Electric Refrigerator, used two years; Roper Gas Stove, 5-piece Chrome Breakfast Set, kitchen tables, utility cabinet, sewing cabinets, stool, rockers, chest of drawers, Simon Hide-a-Bed, small drop-leaf table, 2-piece Knolar Living Room Suite with air foam cushions, coffee table, round living room table, wrought iron table, three speed record player, 3 table radios, bedroom chair, antique table, Aladdin Lamp, electrified with brass base and satin finished shade; China Clock, some antique dishes, porch rockers, porch chair, porch table, 3 porch rugs, platform rocker, card table, ironing board, clothe tree, clothe tree washline, mirrors, large living room mirror 36x46; footstool, needle point top, trunks, cupboard, Hoover Tank-type Sweeper, like new; Bissel Sweeper, set of dishes for eight, set of Rogers Silverware for six, Sunbeam Mix Master, electric toaster, electric popcorn popper, two electric irons, one a steam iron; General Electric Frying Pan, electric coffee pot, large coffee pot, 50 cups, pressure cooker, electric floor fan, desk lamp, table lamps, clothe hamper, laundry cart, picnic utensils, electric hedge trimmer, child's table, set of child's dishes, outdoor grill, two stepladders, step stool, Easy Spin Dryer Washer, hand lawn mower, Kodak Developing Set, feather pillows, linens, crochet table cloths, books, and a lot of articles too numerous to mention.

Sale to start at 6:30 P. M., real estate to be offered at 8 P. M., when conditions will be made known by Clarence C. Newcober, Attorney; Walter Dupes, Auctioneer Landis & Gadam, Clerks

Mrs. Goldie Cover 34-3c

Patronize BULLETIN Advertisers



Fred Waring (right) famous choral director and orchestra leader who is campaign chairman of the Pennsylvania Division of the American Cancer Society for 1955 and 1956, receives the Society's Sword of Hope Trophy from Wisconsin Governor Walter J. Kohler. Governor Kohler, chairman of the ACS national board, presents the citation to Mr. Waring in recognition of his services in the fight against cancer.

The ceremony took place before millions of TV viewers who saw Waring celebrate his fortieth year in show business on The Chevrolet Hour.

PP&L ACQUIRES SERVICE CENTER SITE IN COLUMBIA

Pennsylvania Power and Light Company has acquired a site at Fifth and Poplar Streets in Columbia, in which it ultimately plans to build a modern district service center. Mr. Thomas G. Pennypacker, PP&L district manager at that location, announced today.

He explained that the utility's present intention is to build the service center on the 1 1/4 acre plot, starting probably in the latter part of next year. Purpose of the service center will be to consolidate customer service activities in the Columbia area, providing even better day-to-day and emergency service for PP&L's growing number of customers in this locality.

When completed, the new center will comprise a modern office and service building, parking areas for customer and company vehicles, transformer and pole storage space, and a shelter for customer service equipment. The office portion of the building will include modern bill payment facilities, district manager's office, model kitchen and meeting and demonstration area. The latter will be used for dealer meetings, cooking and appliance demonstrations, bake sales and other functions of this type.

The Columbia center will serve customers living in W. Hempfield, East and West Donegal and Mt. Joy Townships, the western parts of Manor, East Hempfield and Rapho townships and the eastern part of Lower Windsor townships, including the boroughs of Columbia, Elizabethtown, Mount Joy, Mountville, Marietta, Wrightsville and Washington. Planning for the new facility is part of a general program under which the company's commercial and operating functions within a district are consolidated at a single location.

POULTRY INTERESTS BUSY AT PENN STATE National leaders of the poultry industry will aid the busy series of poultry programs listed on the Penn State campus for the week of August 13.

Dr. A. J. G. Maw, of the poultry faculty, is in charge of the training school for flock selection agents August 13-14, which is followed by a Poultry Breeders' Conference the afternoon of August 13. S. C. King, of Purdue, Charles Vantress, of Georgia, and E. F. Godfrey, of Massachusetts, are aiding the breeders' sessions.

Also on August 14, Paul H. Margolf, professor of poultry husbandry, is in charge of a Poultry Products Conference, covering all phases of poultry meat and handling. This Conference includes a banquet program.

On the following two days, August 15 and 16, national leaders, research workers, and practical poultrymen will share the platform for the

PUBLIC SALE - OF - VALUABLE REAL ESTATE

Thursday, Sept. 13, 1956

IN THE VILLAGE OF RHEEMS.

A lot consisting of 60x180 ft. thereon erected a

2 1/2 Story Frame Double House



West side of house containing three rooms and bath upstairs, three rooms, powder room, kitchen, and large hall on first floor; concrete basement, laundry with stationary tubs in basement; oil burner furnace, hot air heat, East side containing six rooms, bath and kitchen, built-in porch width of house.

This house could be made into four nice apartments. LARGE BARN on rear of lot, room for three cars; could make a nice single dwelling out of it.

Arrangements to view property can be made by calling Elizabethtown 7-3560.

Sale to start at 7:00 P. M., when conditions will be made known by

Naomi E. Hoover And Elmer W. Hoover Walter Dupes, Auctioneer D. L. Landis, Clerk

PUBLIC SALE

Friday, August 24, 1956

IN THE BORO OF ELIZABETHTOWN, PEACH ALLEY

A Lot of Things

Sale to commence at 6:28 when conditions will be made by

WALTER DUPES 33-2c

PUBLIC SALE

OF A VALUABLE FARM

Saturday, Sept. 8, 1956

The undersigned will offer at Public Sale on the premises located 4 miles north of Manheim on the Mas-ter-sonville Road (next to Old Line Store) in Rapho Twp., Lancaster County, Penna.

All that certain tract of land containing 67 acres, more or less, in high state of cultivation.

Erected thereon is a

2 1/2 Story Frame Dwelling House



with 10 rooms, electric, and water pressure system.

1-Story Wash House & 2-Car Garage attach. FRAME BANK BARN

equipped for dairy with stanchions for 10 cows, water bowls, milk house, equipped for Grade A-1 Milk Market, electric and water pressure system, concrete barnyard.

TOBACCO SHED attached to barn - room to hang 7 to 8 acres.

IMPLEMENT SHED and CORN BARN with new 2-CAR GARAGE and POULTRY HOUSE attached.

1 BROTHER HOUSE and POULTRY HOUSE. 2 wells of water and fruit trees. Buildings are in excellent condition.

Persons desiring to view same may call on premises time on or before day of sale.

Sale to begin at 2:00 P. M. Terms by

J. H. Ruhl, Auctioneer Henry C. Kreiner 34-2c

ARTHUR J. ULRICH AUTOMATIC HEAT SALES AND SERVICE Box 306, Landisville, Pa. Phone 8122

PLUMLY FARMS

Dispersal Sale

Milking Herd & Bred Heifers

82 Registered & Grade Holstein Cattle

BANGS CERTIFIED, T. B. ACCREDITED, CALF-HOOD VACCINATED

TUESDAY, AUGUST 28th, 1956

AT 12:30 O'CLOCK NOON

Location—In Chester Co., at Westtown, Pa., 2 miles South of West-Chester on Route 202, turn east on Route 926, 2 miles to Shilok Road then 1/2 mile north to Farm.

62 Cows many are fresh or due this fall.

22 Heifers some are fresh the others due this fall.

INCLUDING 5 DAUGHTERS OF LAUXMONT ADMIRAL LUCIFER

4 DAUGHTERS OF PABST BARTA PRILLY WAYNE 16th

4 DAUGHTERS OF LAUXMONT O R GAY BOY

21 DAUGHTERS OF HIGH POINT RAG APPLE JOHAN

DHIA records on all the milkers, this is a very good herd of cows. Mostly home raised.

For Folder write to Harvey Rettew, Manheim, Pa. R. D. 2, Sale Manager.

Ringmaster — Walter Few Lunch by Concord Grange.

Russell B. Jones, Owner WESTTOWN, PA.

Auct. — J. M. Seltzer 33-2c

The Bulletin, Mount Joy, Pa. Thursday, August 23 #5

BIRTHS

Mr. and Mrs. Charles Eshleman, 221 Main St., Landisville, a daughter, Tuesday, at Lancaster General Hospital.

Mr. and Mrs. Arthur Gantz of Mt. Joy R2, a daughter on Tuesday, at Lancaster General Hospital.

Mr. and Mrs. Paul Ruhl of Mt. Joy R2, a son, Tuesday, at Lancaster General Hospital.

Mr. and Mrs. Clarence Weidman, Mount Joy R1, a daughter, Saturday, in Columbia Hospital.

Mr. and Mrs. J. Floyd Weidner, Landisville, a daughter, Saturday, in Lancaster General Hospital.

Mr. and Mrs. Leroy Eberly 206 E. Main Street, a son, Friday, at St. Joseph's Hospital.

WEAR CLEAN CLOTHING Fast and Efficient Service Cleaning - Pressing - Tailoring WOOLEN GARMENTS CLEANED BY US ARE MOTHPROOFED Eicherlys YOU PHONE WE CALL MOUNT JOY 3-4071

LUMBER • MILLWORK • BUILDING SUPPLIES • FEED • HARDWARE SHOP AT... SNAVELY'S in LANDISVILLE STORE HOURS: Monday thru Thursday 8 A. M. to 5 P. M. FRIDAY TILL 9 P. M.—SATURDAY TILL 4 P. M.

25/32 x 2 1/4" #1 common RED OAK FLOORING Chickamauga Brand 26c a sq. ft. 1"x6" GENUINE IDAHO WHITE PINE FENCING 27c a sq. ft. Available in 8 to 16 ft. lengths

10% CASH AND CARRY DISCOUNT ON ALL LUMBER ITEMS

50 ft. Plastic GARDEN HOSE A terrific value... easy to handle lightweight plastic... high quality means longer wear. Was \$3.98 NOW ONLY \$3.50 For Full Corner Coverage WAVE SPRINKLER For Best Results Thoroughly covers a 40 x50 foot area. Oscillates slowly, giving water time to soak in. No puddles — no run-off. Can be adjusted to spray only one-half of its cycle for close-to-house spraying. Top Value at \$8.95

CANNING AND FREEZING SUPPLIES Frezette Bag—reusable—29c per pack Plastic Containers—price range starts at 69c per pack Freezer Tape—big roll—98c Cold Pack Canner Extra deep for more boiling space, better water coverage. Enamel finish. Regularly \$2.99 NOW \$2.67 FREE with purchase of Cold Pack Canner... 9-inch ROUND HOT PLATE MAT

AUGUST CLEARANCE SALE 20% DISCOUNT ON ALL ITEMS LISTED • Power Lawn Mowers • Hand Push Mowers • Cart & Spreaders • Fertilizer & Seed Spreaders • Garden Carts • Lawn Rollers • Garden Sprays & Dusts • Garden Hose & Fittings • Picnic Supplies • Hamburg Grill & Forks • Lawn Chairs • Picnic Tables • Ventilating Fans

SNAVELY BETTER-BILT HOMES ARE DESIGNED AND PRICED TO SUIT YOUR NEEDS Prices start \$3565.00 AS LOW AS J. C. Snavely & Son, Inc. Landisville, Pa. Please send me more information on your BETTER-BILT HOMES and the address of the home nearest me. Name Address Town (E)