

Patronize BULLETIN Advertisers

**SICO PROFITS**

**USE SICO**

Go To **Public Schools**

Gas and Oil **None Better**

**PUBLIC SALE**

Friday Eve'g, May 4, 1956

IN THE BOROUGH OF ELIZABETHTOWN, IN PEACH ALLEY.

Annual Spring House Cleaning Sale

Things and More Things SOME ANTIQUES

Sale to start at 6:30 P. M., when conditions will be made known by

Gerberich & Mertz, Auct. Landis & Garman, Clerks

Walter Dupes 17-2c

**PUBLIC SALE**

Newtown Schoolhouse & Household Goods

Saturday, May 5, 1956

2-Room School House

with modern heating plant, good slate roof, electricity and three quarters of an acre of land situated in the village of Newtown, Rapho Township.

Also at the same time and place, Household Goods, including Keely Cook Stove, large extension table, couch, beds, oil stove, kitchen chairs, kitchen utensils, lard cans, crocks, jars, Radio, cupboard, kitchen cabinets, 20 blackboards, pictures, piano, oil lamps, 300 tobacco lath, plant flats and many other articles too numerous to mention.

ALSO ANTIQUES Tables, dishes, Dutch cupboard, bureau, Chest of drawers, tables, beds, coverlets, quilts, rag carpets, chests, cradle wood chest, flour chest, irons, etc.

C. S. Frank, Auctioneer Claude Zellers, Clerk

R. H. Arndt Sale on School Grounds, Saturday, May 5, 1956 1:00 P. M. E. D. Saving Time. Personal property will be sold first. 17-2c

**PUBLIC SALE**

New and Used Household Furniture

Fri. Eve'g, Apr. 27, 1956

In the vacated Church of the Brethren building, Washington Street, Elizabethtown, Penna.

The following articles are used Church property and equipment:

Large assortment of bookcases and racks; filing cabinets; cloth racks; lot of small tables and twelve dozen small chairs for children; chests; trunks; antique and other cradles and bassinets; flower baskets and stands; open and closed back benches; assortment of serving tables, some with folding legs; large assortment of black and flannel boards; pianos and benches; large assortment of kitchen and serving equipment; lot of folding screens; some chairs and rockers; and many articles too numerous to mention.

Any members wishing to contribute items to this sale, the proceeds to go to the building fund, can do so by contacting the Board of Trustees, J. W. Kettering, Secretary.

Also at the same time and place for the MILTON EBERLY FURNITURE STORE the following items of new furniture and rugs, discontinued numbers and floor samples:

2-piece living room suite, Taylor made, covered in good chaise material; 2-piece sectional suite; 3-piece mahogany bedroom suite; several sets of box springs and mattresses; end tables; lamp tables; and lamps of many varieties and styles; one-half dozen linoleum rugs, size 9x12; dinette sets, one wrought iron and a few chrome with formica top tables; about 100 small rugs; also several 9x12 Axminster Rugs; two 4-piece bedroom suites, dresser, chest, bed and nite stands, lined oak; one buffet and some chairs; 3-5 vanity dressers and about four nite stands left over from very good suites; a number of gliders and porch chairs; baby cribs and highchairs; one used 9-piece mahogany dining room suite; one used 9-piece walnut dining room suite with extra large table.

There will be many items for sale which are not listed, so come and see. This is the kind of sale many people have asked about. Me held a similar sale about 3 years ago and we again hope to sell all goods offered for sale. This is an opportunity for tremendous values at very moderate prices.

So don't forget the date Friday evening, April 27, 1956, at 6:00 P. M., when conditions will be made known by

THE BOARD OF TRUSTEES, CHURCH OF THE BRETHREN AND MILTON EBERLY, OWNERS Dupes & Miller, Auct. Landis and Basehore, Clerks

**Long-Term Pennsylvania Farm Program Proposed**

Harrisburg, April 25—Declaring that many Pennsylvania farm problems differ basically from national farm problems, Dr. Wm. L. Henning, Penna. Secretary of Agriculture, has announced a long-term "Proposed Agricultural Program for Pennsylvania."

Covering 17 points, his program includes items ranging from expansion of farm youth activities and promotion of Pennsylvania farm products to atomic age services for farmers and consumers. He stresses the need for research and attention to family size farms. He lists the following points:

1. A real and effective long-term promotion program for the distribution, sale, marketing and consumption of all Pennsylvania farm products.

2. An expanded educational and research program and effective distribution of whole milk in the school lunch program plus increased use of milk for all Pennsylvania children.

3. An increased distribution of surplus food products, through a more widespread participation in the present program, especially to those families where there are undernourished needy children.

4. An effective control and eradication program for all livestock and poultry diseases and an equally effective plant insect and disease control program.

5. Continue and step-up our indemnity program for the certification and accreditation of the entire State with the eventual elimination of tuberculosis and Bang's disease.

6. Continued improvement and expansion of our State toll, secondary and rural highways to make it possible for faster, more efficient movement of farm products to market and to insure greater safety on our highways.

7. Encourage and extend the rural electrification program in the Commonwealth with the possible development and use of some of the large, low-cost power development projects, such as the proposed Niagara Falls hydro-electric energy development project.

8. Expand and extend the public school vocational agricultural program so that every farm boy in the Commonwealth may have access to this type of training.

9. Expand and extend the agricultural and home economics research and extension programs in the Commonwealth.

10. Encourage the enrollment of more agricultural students at the Pennsylvania State University with the establishment of scholarships for the needy and best qualified students with emphasis on training college graduates in the sciences of agriculture.

11. Institute and complete a State-wide soil survey.

12. Encourage an effective program of soil and water conservation for the benefit of all, through county districts.

13. Eliminate or greatly reduce all taxes on gasoline used on the farm for the production of food.

14. Provide more service to all farmers with special attention to the family-size farm.

15. Encourage agricultural exhibits, fairs and shows in the State with an improved and expanded program of events in the State Farm Show Building, such as the new open livestock and junior dairy shows.

16. Modernize our Pure Food Laws and provide adequate enforcement for the consumer, also feed, fertilizer, pesticide, and similar laws.

17. Make every effort, thru research, to adopt atomic energy and power for peaceful use and especially to discover its nuclear value in disease and insect control, seed and food preservation, genetic changes in animal and plant breeding, etc., with practical application for use by farmers.

**Berks County Apple Blossom Tour Is May 16**

Thousands are expected to flock to Boyertown on Sunday, May 6 for the fourth annual renewal of the Eastern Berks County Apple Blossom Tour.

Blossoms will be on view for the thousands of visitors over a 25-mile guided route through one of Pennsylvania's leading fruit areas.

Leading the tour will be Berks County's 1956 Apple Blossom Queen. To be selected at a dance Friday night, May 4, the queen will represent Berks County in the state Apple Blossom Queen contest in York later in the year.

Candidates for the queen crown must be daughters or close relatives of Berks County growers. The growers are cooperating with the Boyertown chapter of Junior Chamber of Commerce in sponsoring the gala weekend event.

Richard Houck, general chairman, today issued an invitation to all persons from the Middle Atlantic States to participate in the tour.

We believe you will see a beautiful blossom scenery as you ever have in your life in Boyertown. We hope you will come to Boyertown on Sunday, May 6—or for the entire weekend if you like.

**Emergency Phone Number Reminder**

Residents of Mount Joy and other boroughs of the county plus Lancaster City are reminded of emergency telephone numbers when doctors cannot be reached. The Lancaster City and County Medical Society, organized in 1949, desires to provide good medical care twenty-four hours a day. This non-profit organization's chief purpose is to handle incoming calls for doctors' offices. The Bureau will locate the doctor being called or in his absence contact an alternate doctor.

As a reminder to residents of Mount Joy, the emergency number for the local doctors is MJ 3-9251.

**ENGAGEMENTS**

HOFFMAN—NENTWIG Mr. and Mrs. Charles Hoffman, 137 S. Charlotte Street, Mannheim, announce the engagement of their daughter Joan, to Clyde K. Nentwig, son of Mr. and Mrs. Ralph M. Nentwig, Wood Street, Florin.

Miss Hoffman is employed by the Manheim Knitting Company and Mr. Nentwig, at the Marietta Air Force Station, Marietta.

**MARRIAGE LICENSES**

Kenneth E. Brubaker, Mt. Joy R1 and Mildred A. Witman, Salunga.

Big evening auction coming up at the Holmes Homestead. Follow signs off Pa. Rte. 44, 4 mi. from Millport, and 5 north of Shinglehouse, 15 from Wellsville - 16 from Coudersport - 20 from Clearfield - 24 from Clearfield - 28 from Clearfield - 32 from Clearfield - 36 from Clearfield - 40 from Clearfield - 44 from Clearfield - 48 from Clearfield - 52 from Clearfield - 56 from Clearfield - 60 from Clearfield - 64 from Clearfield - 68 from Clearfield - 72 from Clearfield - 76 from Clearfield - 80 from Clearfield - 84 from Clearfield - 88 from Clearfield - 92 from Clearfield - 96 from Clearfield - 100 from Clearfield.

Good dairy equipment. Come early - bring the family and pick up your start in the Hereford business & replenish your dairy herd. Farm is being sold so there can be no reserve! Write Rumseys of Westfield, Pa. for posters. B. L. Crowell, Owner. Auction by Rumseys. 17-1c

Richard Houck, general chairman, today issued an invitation to all persons from the Middle Atlantic States to participate in the tour. We believe you will see a beautiful blossom scenery as you ever have in your life in Boyertown. We hope you will come to Boyertown on Sunday, May 6—or for the entire weekend if you like.

**COME IN TODAY AND SEE THE**

All New 1956 Mercury

ASK FOR AL PEIFER

AT Garber Motor Co.

ELIZABETHTOWN

PHONE 7-1181 10-1c

**A Fine Line of Stylish Frames**

YOUR EYES

Should be examined every 2 years!

Dr. J. S. Belsinger

Optomtometrist

Eyes Examined—Glasses Prescribed After 13 Years in Charge

Now Successor to Gainsburg Optical

47 West King Street Lancaster, Penna.

Come in or phone 7-8669

Closed Mondays—Open Daily 9:30 to 5—Friday 'til 8

**WE PUT THE CLEAN IN SPRING HOUSE CLEANING!**

Let us clean those drapes and give them a "Like New" look! Our modern equipment plus experience adds up to the best in cleaning service for you on all your cleaning needs.

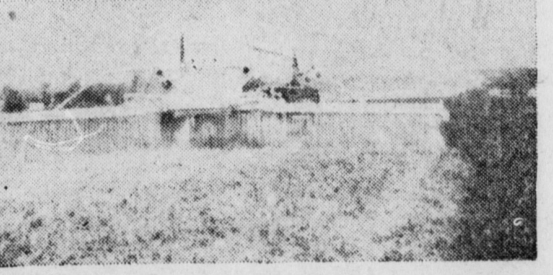
Don't risk ruining draperies and slip covers with half-way or make-shift cleaning methods.

**Eicherlys**

PICK UP AND DELIVERY SERVICE

East Main St. Phone 3-4071 Mount Joy, Pa.

**HAVE YOUR FARMLANDS LIMED NOW BY A MODERN SPREADER LIKE THIS...**



This modern 30 foot spreader will spread Martin's Quality Lime quickly, efficiently and make your soil more productive.

As you know, every crop makes your soil more deficient in certain minerals, which, if not replaced by liming, will cause poor crop production and unhealthy livestock.

To meet this condition, you should have your soil tested periodically to determine if your soil needs lime and the amount needed. You can do this by taking advantage of our FREE SOIL TEST. Phone New Holland 4-2112 or Terre Hill 5-3455. Send a card or letter to

Ivan M. Martin, Inc.

310 Quarry Road, Blue Bell, Lancaster County, Pa.

**Buller's Beauty Salon PLOWING**

MAIN ST. FLORIN, PA Cold Waves & Machineless Permanents I give "Toni's" OWEN MUMMA MT. JOY R2. PH. 3-9674

... For smart home makers of today ... and tomorrow!

See Hardwick High Style Automatic Gas Range Big Giant 24" Oven

Bigger Inside . . . . Smaller Outside

M. S. SENSENIG

FRIGIDAIRE - WILSON Sales & Service

206 EAST MAIN STREET MOUNT JOY PA.

**—Don't Keep Putting It Off Buy One Of These Homes Now**

**ELIZABETHTOWN**

NEW RANCHERS	
4 Rooms and Bath	\$ 9,800.00
5 Rooms and Bath	\$12,900.00
5 Rooms and Bath, Expandable	\$12,900.00
5 Rooms and Bath, Expandable	\$13,500.00
5 Rooms and Bath, Expandable	\$14,600.00
5 Rooms and Bath, Garage	\$14,750.00
5 Rooms and Bath	\$15,500.00
2 1/2 Story, 7 Rooms and Bath	\$11,500.00
2 1/2 Story, 8 Rooms and Bath	\$12,000.00
2 Unit Apartment	\$12,000.00

**FLORIN**

6 Rooms and Bath	\$14,500.00
------------------	-------------

**MOUNT JOY**

4 Rooms and Bath—Expandable	\$ 6,000.00
5 Rooms and Bath—G. I. APPROVED	\$12,850.00
7 Rooms and Bath—Garage	\$23,000.00
6 Rooms and Bath—Garage	\$24,500.00

**NEAR BAINBRIDGE**

4 Rooms and Garage	\$750 Down, Pef Mo. \$42.43
5 Rooms and Bath	\$ 6,500.00

**FARMS**

Near Mount Joy—1 Acre, 10 Room House, Barn	\$ 7,500.00
Near Mount Joy—2 Acres, 7 Room House	\$10,750.00
Near Elizabethtown—26 Acres, 7 Room House	\$12,750.00
Near Elizabethtown—100 Acres Woodland	\$10,500.00

**MIDDLETOWN**

East of Town, 6 Rooms & Bath	\$ 9,500.00
East of Town, 1 1/2 Story Finish-it-yourself	\$ 3,000.00

**BUSINESS PROPERTIES**

Grocery Stores, Body Shop, Hotels, Restaurants, Gas Stations

**Open For Inspection Ranch Type Homes**

SAT. & SUN., APRIL 28-29 2:00-5:00 P. M.

Maytown, Pa.

South Arnold Street

Elizabethtown, Pa.

409 Snyder Avenue

V. A. AND F.H.A. FINANCING AVAILABLE

LOW DOWN PAYMENT - LONG TERM

DANIEL E. GARMAN

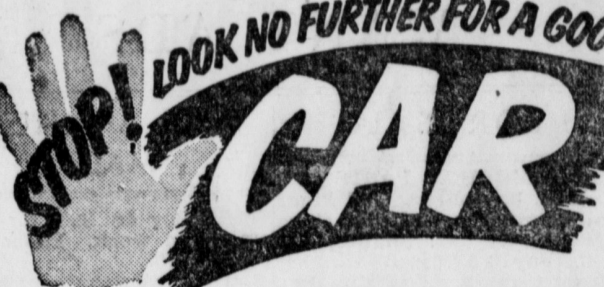
REAL ESTATE AND INSURANCE

81 E. Main St., Mount Joy, Pa. Phone 3-6911

Patronize BULLETIN Advertisers

**KEENER MEMORIALS MAYTOWN**

SIMON P. NISSLEY MARY G. NISSLEY FUNERAL DIRECTORS Mount Joy, Pa.



Some Real Values in Nice Clean Automobiles

1953 CHEV. 2 DOOR 15,000 Miles	1949 BUICK SEDAN Dinaflow
1953 FORD 2-DOOR 6 cyl.	1949 MERCURY 2-Door*
1952 FORD 4-DOOR 8 cyl.	1946 PONTIAC SEDAN TRUCKS
1952 FORD 2-DOOR 8 cyl.	1953 FORD PANEL 6 Cyl.
1949 PONTIAC 2-DOOR	1949 1 TON STUDEBAKE

**CLARENCE W. HER**

SALES Ford SERVICE

MOUNT JOY PHONE 3-97

**Time To Buy Your Used Car**

1955 V-8 "210" 4-Door Sedan RADIO & HEATER

1954 Buick 2-Door Riviera RADIO - HEATER - DYNAFLOW

1954 - 6 "210" 4-Door Sedan RADIO - HEATER - P-GLIDE

1954 Olds Holiday Coupe RADIO & HEATER

1953 Chevrolet Belair Sedan RADIO - HEATER - P-GLIDE

1953 Ford Sedan RADIO - HEATER - CLEAN

1952 Ford 3/4-ton Pick-up

**Newcomer Motors, Inc.**

WEST MAIN STREET PHONE 3-4821

**We're Trading High On The Big "M"**

At Middletown

NISSLEY MOTOR CO.

We need more cars to fill our Enlarged Used Car Lot

2 Yrs. or 35,000 Mile New Car Guarantee

EASY TERMS - 30 MO. TO PAY NO DOWN PAYMENT ON MANY MODELS

A FEW SAFE BUY MODELS

'55 Montclair H-Top Aut. Trans. \$274

'55 Chevrolet V-8 Od. 2-door \$194

'53 Hudson Hornet Hollywood Hyd. \$124

'53 Chevrolet 4-door 210 R&H \$114

'49 to '51 MODELS \$75 to \$395

**NISSLEY MOTOR CO.**

Direct factory Lincoln-Mercury-Continental Dealer

MIDDLETOWN, PA.

Open 9 - 9 - Sunday 12 - 8 Call WH-446

**OUR WANT ADS ARE SMALL but they get NOTICED**

Dupes & Miller, Auct. Landis and Basehore, Clerks 16-2c

Ivan M. Martin, Inc. 310 Quarry Road, Blue Bell, Lancaster County, Pa. 17-3c

Patronize BULLETIN Advertisers