

**Answers
For Veterans**

Questions & Answers
Q—I am the widow of a World War II veteran who died of a service-connected disability, and I have never remarried. Would I be eligible for a GI home loan, even though my husband made use of his loan benefit before he died?

A—Yes. The fact that your husband used his GI loan benefit would not serve to prevent you from getting a GI loan in your own right.

Q—I am taking farm training under the Korean GI Bill. I know that I must train full time, but is there any rule against doing a little outside work if it doesn't interfere with my training?

A—You may work for pay outside of your training, so long as you do not put in more than 180 hours during any 12-month period, and so long as the school finds that your outside work does no interfere with your studies.

Q—What does VA consider a GI insurance premium to have been paid—the date I put the check in the mail or the date the check reaches the VA?

A—The postmark date on the envelope is considered as the date the premium was paid.

Q—How do I go about changing my program of training under the Korean GI Bill?

A—You must apply to VA for a change on VA Form 7-1095. Included must be a report of progress and conduct from your present school. This application form goes to the VA regional office that has your records.



OUT ON A LIMB
By Stumpy McCulloch

A couple days ago, some of us were discussing ways to raise more money for our country. A feller down the road came up with an excellent suggestion: tax every political speech made in this country.

His plan would take a lot of doing, but it would give us an opening wedge to reduce taxes. A wedge such as this would be important, just as wedges are important in the lumbering of big trees—the kind of trees they grow up in Oregon, Washington and British Columbia. Unlike taxation, however, a wedge used in timber work is a saw cut—prevents splitting and makes it easier to cut. It makes it easier to cut a tree in the desired direction. Maybe an opening wedge is just what we need for timberin' or politickin'.

Many fellers use wooden wedges in the timber, particularly when they're working with soft woods. Wooden wedges are cheap, and they can be home-made. Hardwood is best dog wood, ironwood, hard maple and beech. But wedges made from green timber don't stand up very well.

I find it's best to use a wedge that's been cut with a saw. It seems to work better than one shaped with an axe. The roughened surface left by the saw holds better. And it's good to use a wooden wedge with a chain saw. Since the wedge is apt to come in contact with the chain on the back, edges would only damage.

Sometimes, however, if you're cutting a crew in the woods, it's best to use steel wedges. A crew can split a day of wooden wedges during a day. You can buy steel wedges from any saw dealer or you can have them made up in a blacksmith shop. I've found the best metal wedges are those that are left untempered. If you strike a tempered steel wedge with a tempered steel sledge, the wedge is apt to spall and the "Hittin'" treatments can be dangerous enough to send you to your doctor.

Speakin' of doctors, I knew one once who put a pretty girl in a private hospital room 'cause she had a skinned finger. "She was too cute for wards," was the doctor's excuse.

Did you know that almost ten million acres of good timber were burned in 1953? That's enough wood to build houses for every family east of the Rockies. Still, this was the lowest forest fire figure since 1946, and that's a good sign.

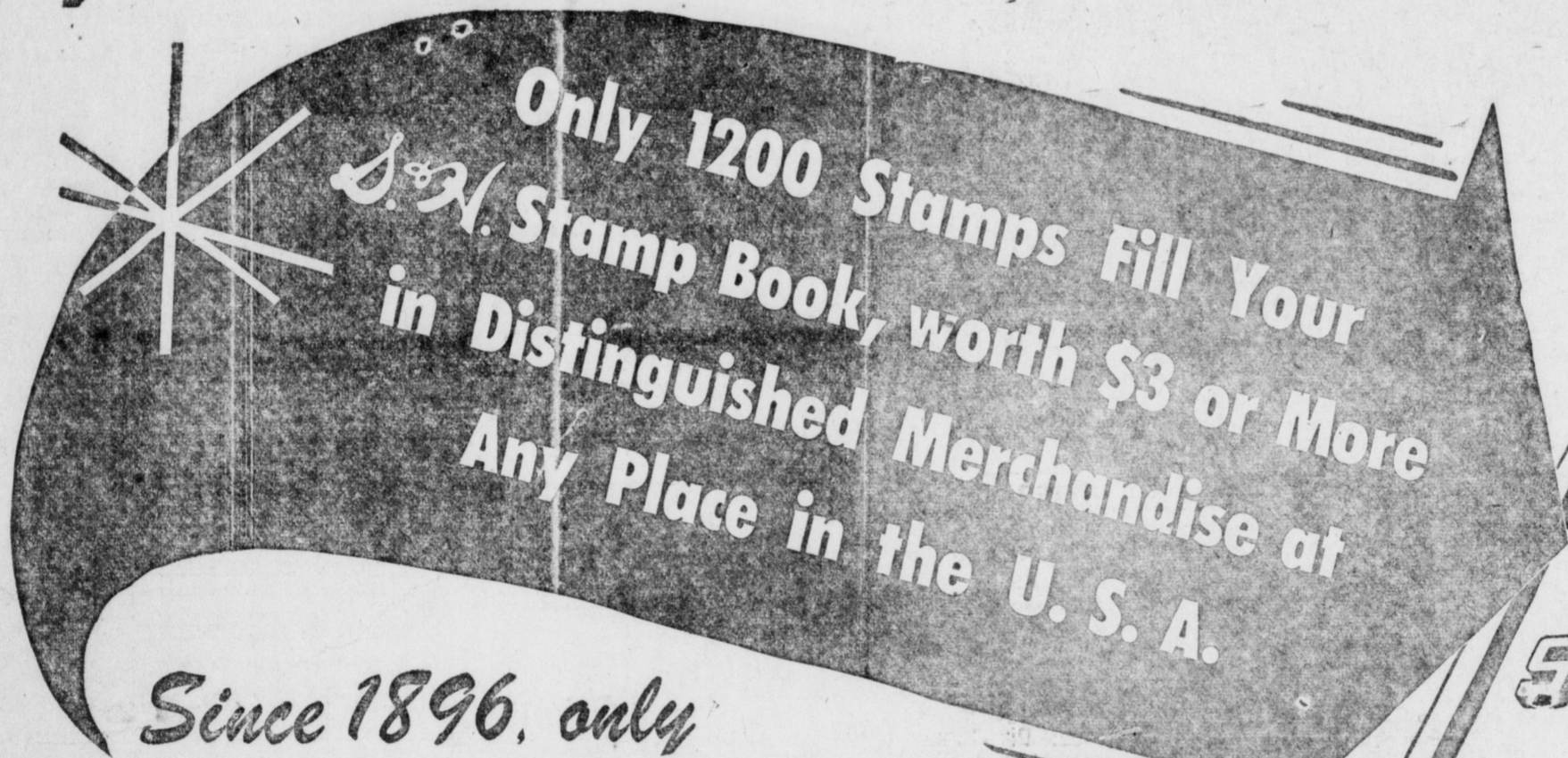
My old friend Hank Leavitt, out in Sacramento, Calif., wrote to tell me that a pal of his was worried 'cause his daughter had taken up with a new doctor in town. But Hank solved the problem. "There's one way to break it up," Henry told him. "Feed her an apple a day."



**Assure You
that with**

S. N. Green Stamps

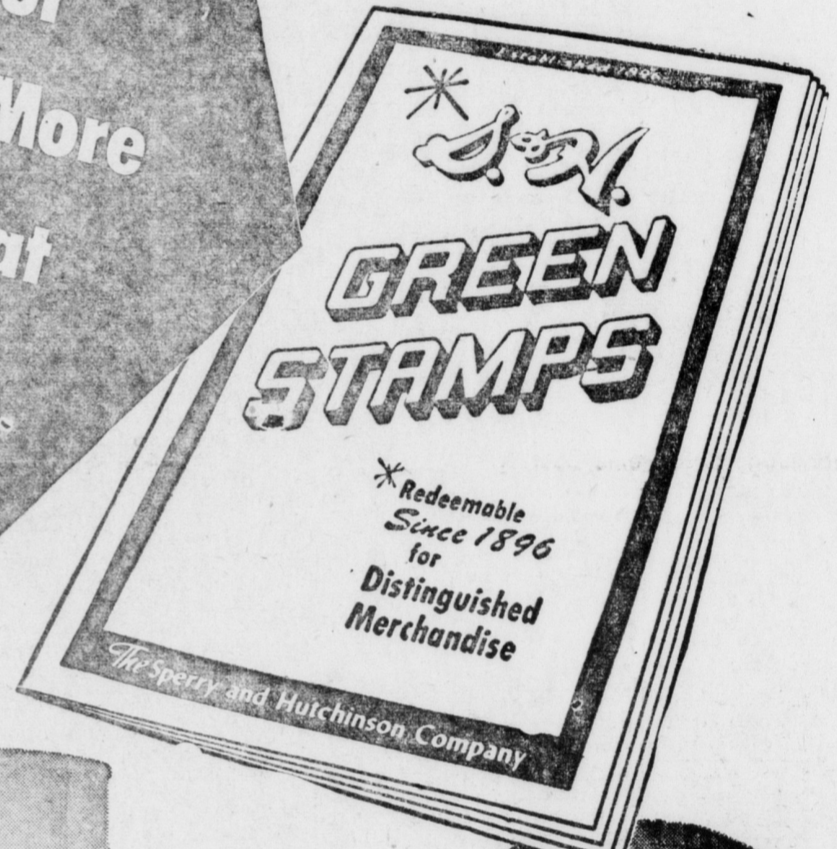
You **OUT SAVE** *them All!*



Since 1896, only

Distinguished Merchandise has been offered

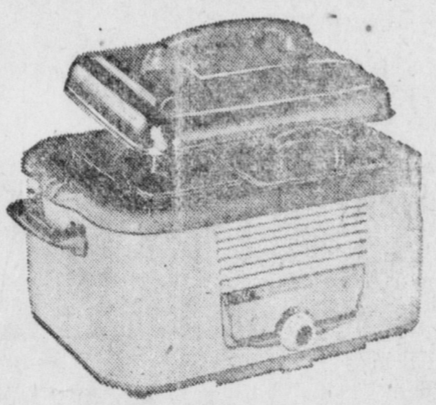
Whether by mail or by selection in person at any S. N. Merchandise Store in America, you'll be greatly impressed by the quality of all S. N. Redemption Merchandise. Most items bear famous names you know and trust . . . price values you'll recognize in stores everywhere. In addition, many items of S. N. merchandise include several models or types for varying quantities of stamps. When comparing the "stamp book value" of various items of merchandise, remember that you fill an S. N. Collector's book with only 1200 stamps . . . not 1500, 1440 or 1360 stamps. And, these 1200 S. N. Green Stamps are worth \$3.00 or more in distinguished merchandise at any S. N. Merchandise Store or by mail from any place in U.S.A. Just as Acme Super Markets give you more for less money, with S. N. Green Stamps you get more of the best for the least number of stamps. Therefore, it pays to trade at scores of stores and service stations which display that appreciative sign: "We give S. N. Green Stamps."



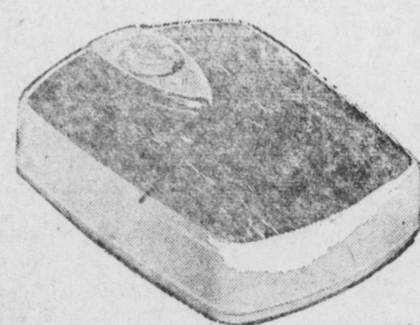
KNOWLES
16 Pc
2 1/2 S. N. Books
3000 Stamps



DEENA
2 3/4 S. N. Books
3300 Stamps



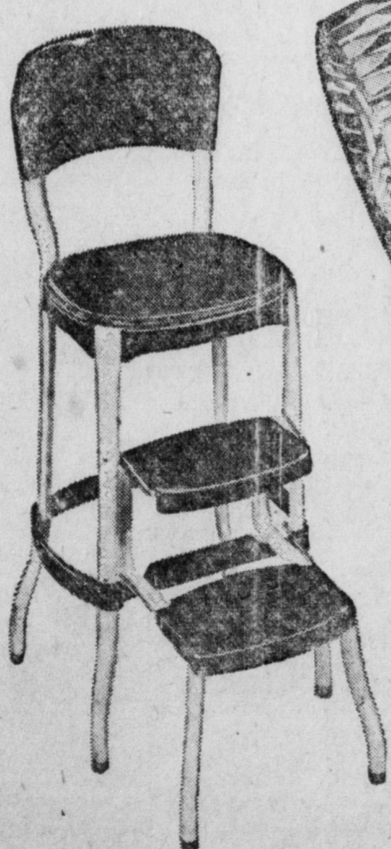
WESTINGHOUSE
13 3/4 S. N. Books
16500 Stamps



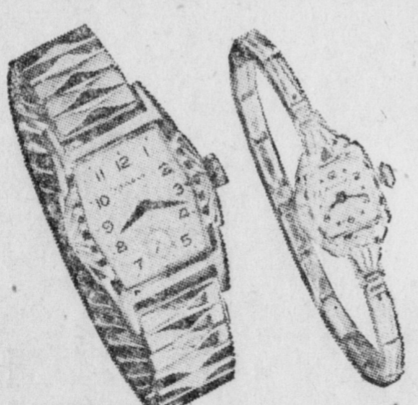
HEALTH-O-METER
1 1/4 S. N. Books
1500 Stamps



ANSO
4 1/2 S. N. Books
5400 Stamps



COSCO
3 1/4 S. N. Books
3900 Stamps



BULOVA
— for Man or Woman
10 S. N. Books
12000 Stamps



DOVER
1 S. N. Book
1200 Stamps



SCHICK
7 S. N. Books
8400 Stamps

