



Richard E. Miller Auctioneer

Complete Sales Service
Anywhere

PHONE MOUNT JOY 3-5455
R. D. 1 COLUMBIA, PA.
9-2p

be
SAFE

be
SURE

be
THRIFTY

heat your home
with oil



Oil heat is safe, steady,
reliable heat. And it's
cheap.

Call on us for At-
lantic's famous triple-
refined heating oil with
the new additive that
helps keep sludge
from forming. Prompt
deliveries. Around the
clock service.

Hollinger Oil Service
FLORIN, PENNA.
Phone Mt. Joy 3-3483
LEHIGH AVENUE
LANCASTER, PA.
Phone Lancaster 3-3401

When in need of Printing, (any
thing) kindly remember the Bulletin

Neighborhood Completes Spring Plans

Plans were completed for Girl Scout Week, Day Camp and Juliette Low donations at the regular meeting of Mount Joy-Florin Girl Scout Neighborhood Monday night at the local Presbyterian Church. Troop committee members plus the leaders and one representative from each of the troops were present at the meeting.

Final plans were made for the out-of-doors day Mar. 17 at the Little Chiques Park from 10 a.m. to 4 p.m. All troops are urged to attend. The group decided to purchase a new American flag for the Day Camp and also to purchase flip charts which show the procedure of fire building, lashing and primitive camping.

The group also made plans for a fat collection Saturday, April 28, with a rain date of May 5. Mrs. Eric Olson, chairman of the Americano Fair, from the neighborhood, reported on the project of the booth. The Fair will be held in Lancaster next month. Day camp plans were discussed and plans were completed to have the troops attend the church service at the local Presbyterian Church, Sunday, March 11, in observance of Girl Scout week.

Miss Joyce Baker's Florin troop presented an original skit as part of the program. Linda Kleiner wrote and directed the skit. Cash donations were presented by the troop representatives for the Juliette Low Foundation. The troops earned the money through various ways such as eating oranges, counting the seeds, and contributing a penny for each seed.

John Hart Attends National Meeting

How to run a better high school was explored at the National Association of Secondary School Principals in Chicago last week. John Hart, assistant principal of Donegal High School, was among the 4,000 principals who attended the fourth annual convention.

In 32 discussion groups, the nation's principals exchanged ideas and experiences on every phase of high school operation. One hundred forty firms displayed the latest items in school books, supplies and equipment at the affair. Each day there were visits to selected Chicago high schools to observe them in action and to a number of the cultural and industrial points of interest in Chicago.

Patronize Bulletin Advertisers

**COME IN TODAY
AND SEE THE
All New 1956 Mercury**
ASK FOR AL PEFER
AT
Garber Motor Co.
ELIZABETHTOWN
PHONE 7-1181

Junior Play Is This Weekend

"Finders Creepers", the junior play of Donegal high school will be presented this weekend. Cast members are Glenn Eshelman, Jas. Baiely, JoAnn Stehman, Ronnie Jean Reese, Richard Bowers, Elaine Showalter, Jacob Zeller, Kenneth Appley, Arlene Heisey, Samuel Zuch, Barbara Jo Thome, Fred Bernhard and Ronald Gotwalt.

Mrs. Paul Gingrich will direct the production and student directresses are Shirley Metzler and Betty Jean Mumma.

Committees are announced this week. Mrs. John Day, as faculty chairman and LeRoy Kaylor as student chairman, are in charge of tickets with Phyllis Wolguth, Douglas Fish and Patricia Druce. Miss Catharine Zeller is in charge of make-up with Marian Becker, Dolores Frantz, Hazel Gelhard, Betty Brooks and Judy Naugle. Benjamin Weaver, as faculty chairman and Ruth Loewen as student chairman, are in charge

of properties with Glenn Kauffman, Ernest Roberts and Charles Peifer.

Nancy Royer is in charge of posters with Joanne Reynolds and Susanna Walters. William Vogle is in charge of the curtains; Kenneth Newcomer, lights; Miss Thelma Taylor, faculty chairman and Mary Ann Felty, student chairman, publicity with Audrey Musser, Edward Lindemuth, and Barbara Gibble. Programs and tickets were printed by David Chapin, Edward Porter and Robert Welcomer.

Kenneth Depoe and Hubert Peters are faculty chairman for the stage. Students on the committee are Richard Shirk, Paul Becker, Paul Brenner, Robert Elcherler, Thomas Engle, Thomas Schroll, William Vogle and James Shank.

TOURS HOSPITAL

The Home Nursing Club of Donegal High toured Elizabethtown Crippled Children's Hospital. The group was accompanied by their advisor, Mrs. Sadie Brooks, Miss Lily Martin and Mrs. John Wittle.

Mortuary Record

MRS. MARY F. FICKES
Mrs. Mary F. Fickes, 97, widow of Ira F. Fickes, 550 Peebles St., Wilkensburg, died at 2 p.m. Sunday at the Shadyside Hospital, Pittsburgh.

Born in Mount Joy, she was a daughter of the late Henry and Mary Metzler Comp and was a member of the First Methodist Church, Lancaster, for many years. She moved to Pittsburgh about ten years ago.

Surviving are a daughter and two sons: Mrs. Grace F. Swan, with whom she resided; Walter R. Fikes, Lancaster, and Eugene W. Fikes, Ontario, Calif.

Also surviving are 11 grandchildren, 22 great grandchildren and a sister, Mrs. Elsie C. Leinbach, Lancaster.

IRA FUNK

Ira Funk, 66, died Friday, March 3rd at the Harrisburg Polyclinic Hospital. A former resident of Mount Joy, he was the son of the late Samuel and

THE BULLETIN, Mount Joy, Pa.,
Thursday, March 8

Ellen B. Funk.

He was survived by the following sisters and brothers: Mrs. Mary Divit, Charles and Harold Funk, all of Mt. Joy, and Frank, Manheim. Also a grandson, Harry Kink, Mechanicsburg. He was employed by the Plate Division, Phoenix Iron & Steel Co., Harrisburg for the past 40 years.

Funeral services were held Monday afternoon at the Fackler Funeral Home, Harrisburg. Interment at the Rolling Green Cemetery.

Mrs. Edna Kepple, and her two children Richard and Mrs. Eugene Eicherly, attended the funeral of Mrs. Kepple's father in Greensburg, Wednesday.

When in need of Printing, (anything) kindly remember the Bulletin

We Have the Latest

—In Nutrition
—In Service

We Have—

- 1 - NF180
- 2 - PAN VITA
- 3 - NFZ
- 4 - NICARBAZIN

RED COMB POULTRY FEEDS

PIONEER DAIRY & HOG FEEDS

MAYER'S POULTRY FEEDS

SOLD BY

A. C. MAYER

PHONE MT. JOY 3-9821

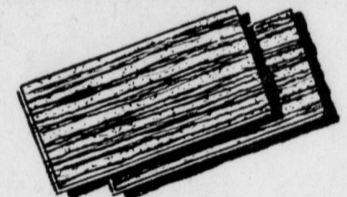
LUMBER • MILLWORK • BUILDING SUPPLIES • FEED • HARDWARE

SHOP SNAVELY'S AT... LANDISVILLE

STORE HOURS: Monday thru Thursday 8 A. M. to 5 P. M.
Friday Till 9 P. M.—Saturday Till 4 P. M.

Your decorative uses are unlimited with
Beautiful Striated PLYWOOD

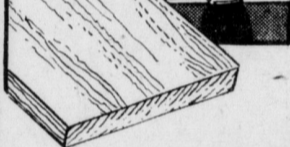
WALLS Can be painted or stained
PLANTERS any color you desire.
BARS So easy to saw—shape and install.
COUNTERS 4' x 8' sheets only 27c a sq. ft.



Ask About Our Generous Cash and Carry Discounts

Spring cleaning always shows...

YOU NEED MORE SHELVING!



Western Pine
1" x 12" Shelving
only 16c a lineal
foot

Make your own shelving and make your living easier—more pleasant. Cluttered, junky, "Fibber McGee" closets are irritating and time-wasting.

Prolong the Life of your roof.
Apply **ELMCO**
Asphalt Roof Coating

5 gallon pail . . . 82c per gal.

FIX THAT ROOF NOW
Use plastic Cement

An elastic, full bodied plastic ready to use for fixing slate, felt, metal roofing or on chimney flashing. Also usable on bricks and concrete work!



PATCHING PLASTER

Fill those wall cracks with
Patching Plaster before
spring painting.

5 lb. package 50c
2 1/2 lb. package 29c

Special 5 lb. can 55c

SNAVELY'S is Authorized Dealer for SCOTT'S SCOTT'S LAWN SEED

Scott's CLOVEX
A fine clover mixture.
12 oz. package 95c

Hydrated LIME
50 lbs. only 73c
Can cover approx.
1000 sq. ft.!

Cow or Sheep MANURE
28 oz. package 29c
3 1/2 lb. package 69c

NOW'S THE TIME TO BUY... 17" GOODALL ROTARY MOWER

GOODALL



Extra Power! 2 HP Power Products
2-cycle engine. 4-wheel carriage. only \$69.50
Semi-pneumatic tires. Rear grass chute. Folding
handle. Vertical direct drive. Light, all-aluminum
construction. Includes leaf mulcher. A real buy!
ANOTHER SPECIAL: 19" DUO-MASTER
Rotary Mower by ECLIPSE only \$77.98

LAWN TOOLS

See our complete line
of Lawn and Garden
Tools.

Here are just a few of our
special prices:

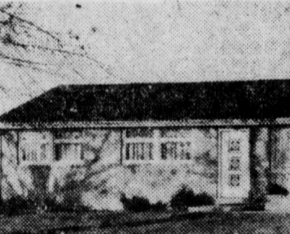
- Garden RAKE \$2.48
- Garden SHOVEL 3.20
- Lawn RAKE \$2.10

We invite you to use our EASY PAYMENT PLAN

Made to fit your budget!

A REAL SPECIAL! 16 Foot Shorty Extension LADDER

The best in vertical grain
lumber at a real low price!
only \$11.46



SNAVELY Better-Bilt HOMES

A DREAM HOME OF YOUR OWN!
At a price you can afford.

Basic home \$3565.00
as low as

Please send me more information on
your BETTER-BILT HOMES and the ad-
dress of the Home nearest me.
Name
Address
City State

We invite you to visit one of our Better-
Bilt Homes and see for yourself the Dream
Home you can afford. They're pre-assem-
bled in our own yards by our own labor
to save you money. A wide selection of
plans to suit your individual needs and dis-
tinctive tastes.

JAKE STEHMAN

FLORIN
PA.

IGA GOLD NUGGET Days

DEL MONTE
CATSUP
2 1/2 oz. Bottles 39c

DEL MONTE
**FRUIT
COCKTAIL**
No. 2 1/2 Can 35c

I. G. A.
RAISINS
2 1/2 oz. Pkgs. 39c

DEL MONTE
PEACHES
No. 2 1/2 Can 31c

MARLENE YELLOW QUARTERS
Margarine
IGA DELICIOUS QUALITY
Pork & Beans
IGA RIPEN RAGGED CHUNKY
Pineapple
BOSCU DECORATED TUMBLER
Peanut Butter
JOHN COPE'S
Dried Corn 5-oz 21c 12-oz 43c

SAVE!
STARKIST
TUNA
Chunk Style
1 1/2 lb. Can 29c

IGA TableRite
Sliced Bacon
lb pkg 41c

U. S. Choice Beef
CHUCK ROAST lb. 29c
Swift's Premium
FRANKS lb. 43c
Lean Rib-end
PORK CHOPS lb. 39c
Fresh Select
BEEF LIVER lb. 45c
**PICKLE & PIMENTO
LOAF** 8 oz. pkg. 23c

KELLOGGS
Corn Flakes
2 8 oz. Pkg. 29c
2 12 oz. Pkg. 39c

Apricot Nectar Hearts Delight 46-oz. Can 35c
Grapefruit Sect. IGA 2 3oz cans 27c
NBC Shredded Wheat 2 12-oz. pkgs 33c
Sauer Kraut Seneca or Silver Fruit 2 2 1/2 cans 33c
Sunshine Krispy Crackers lb 25c

SAVE!
CUTRITE
Wax Paper
2 12 1/2" Rolls 45c

FRESH Fruits & Vegetables

U.S. No. 1 NEW RED
POTATOES 5 lbs 33c

JUICY CRISP
Macintosh Apples 4 lbs 25c

CRISP C-7 ICEBERG
Lettuce 2 lge heads 35c

GOLDEN YELLOW
Bananas lb 12c

Mix or Match Frozen Food Sale
MRS. PAULS
CODFISH CAKES
DEVILED CLAMS
FISH FILLET
Your Choice 3 for \$1
I. G. A.
CUT or FRENCH
GREEN BEANS
Your Choice 5 pkgs \$1

IGA
THE TREND TODAY IS TO
SAVINGS

**STOP! LOOK NO FURTHER FOR A GOOD
CAR**

Some Real Values in Nice Clean Automobiles

1953 CHEV. 2 DOOR 14,000 Miles	1952 FORD 2-DOOR 8 cyl.
1953 FORD 2-DOOR 6 cyl.	1950 DESOTO 4-DOOR
1952 FORD 4-DOOR 8 cyl.	1950 CHEVROLET 1 TON PLATFORM

CLARENCE W. HERR
SALES SERVICE
MOUNT JOY PHONE 3-9701

J. C. SNAVELY & Sons, Inc.
at LANDISVILLE