

Twenty-Seven Initiated Into B. P. W. Club

Twenty-seven new members were initiated into the local Business and Professional Women's Club Monday night at Hostetters. These members plus the charter members give the club a membership to date of fifty-nine.

Mrs. Lester Roberts, membership chairman, had charge of the program. Miss Esther Walters and Mrs. Walter Sloan played piano duets. An informal "fireside" panel was also included. With Mrs. Eugene Eichler acting as moderator, four of the club members discussed their vocations & hobbies. Mrs. Frank Young, Sr. told about the communication systems in the town; Mrs. Joseph Germer discussed serving as accompanying nurse for volunteer ambulance calls; Mrs. Nelson told of her hobby of painting with oils; and Mrs. Adam Greer showed pictures taken on her trip to the western states this past summer.

In absence of the president, Mrs. George Broske, Miss Mary Strickler, a former president of the Elizabethtown Club, took charge. During the business meeting with Mrs. Simon Nisley, vice president, in charge, the group planned their February meeting. Since February is Sweetheart Month, the members will bring their husbands to the meeting. John Reese of Lancaster, will give a talk on investments and securities. Forty-six members attended.

ENGAGEMENTS

MURRY-SEARS
Mr. and Mrs. John Murry, of 505 South Lime Street, Lancaster, announce the engagement of their daughter, Marlene, to Larry Sears, son of Mr. and Mrs. Joseph Sears, Mount Joy, Pa.

Miss Murry is a senior at Donegal High School. Her fiancé is employed at the Sanitary Super Market, Lancaster.

Celebrates Birthday

Miss Lynn Matoney, daughter of Mrs. Jacque Matoney, celebrated her Fourth birthday with a Western Party at her home at 11 East Main Street Thursday, January 19th.

The following guests were present in their western togs and guns: Frankie Morton, Linda Stauffer, Jessica Sheetz, Judy Sheetz, Mary Rebecca Sheetz, Kim Rice, Steve Johnson, Susie Smith, Betsy O'Connor, Tommy O'Connor, Susie O'Connor, Chris Young, Jane Heilig, Jean Heilig, Theresa Wagner, Denise Wagner, Linda Morton and Karen Rice.

Also these mothers: Mrs. James Heilig, Mrs. Frank Morton, Mrs. Lee Rice, Mrs. Gerald Sheetz, Mrs. Roy Wagner, Mrs. Charles Johnson, Mrs. Owen Smith, Mrs. Frank Young, Jr., Mrs. John Stauffer and Mrs. Jacque Matoney.

TWO SUFFER INJURIES

Two local teenagers are hospitalized through sledding accidents. James Bennett, Marietta Avenue, and Joanne Brubaker, Salunga, are the two who were injured in sledding accidents over the past weekend.

Local Product To Be Made In Lancaster

A high precision gauge which has been made by the New Standard Corporation, Pinkerton Road, will now be made by the Hamilton Watch Company, Lancaster. A. B. Sinkler, Hamilton president, said that his company had acquired all rights to manufacture and distribute Kwik-Chek gauges which were developed about a year ago at the local plant.

Manufacture of the new items will begin next month with scheduled deliveries for March. The gauge, available in three sizes, measure the interior diameter of round holes by utilizing a sliding shaft and precision locking device that permits fast and precise readings, accurate to the nearest half thousandths of an inch.

The transaction was completed Monday by Mr. Sinkler and M. F. Zifferer, president of the local company.

CHRISTIAN ENDEAVOR MARKS 75th YEAR

Extensive preparations have been started for the celebration of the 75th Anniversary of Christian Endeavor, according to announcement made by Dr. Gene Stone, general secretary of the International Society of Christian Endeavor.

Production of leather and rubber goods are among the leading industries of little Wyoming County. - PNS

THE BULLETIN, Mount Joy, Pa.
Thursday, January 26, 1956

Extra Caution Needed In Snow

Harrisburg. — You don't have to be a wizard at driving to get through a blizzard safely, but you do have to exercise added caution, Col. E. J. Henry, Commissioner of the Penna. State Police, declared today.

"When storm warnings are given, it's best to avoid driving except for trips that are absolutely essential," the state official commented.

"Even with highway crews working 'round-the-clock' to keep highways open in the worst of snowstorms, drifting of snow may quickly make travel hazardous.

"If a driver must undertake a trip in bad weather, he should be sure his vehicle is in A-1 condition, to prevent trouble in some out-of-the-way area far from expert mechanical help."

Even with this self-help, however, Col. Henry cautioned that speeds must always be reduced on ice and snow.



SUSQUEHANNA-GLEN LYON ANTHRACITE

Finest fuel money can buy, product of three of Pennsylvania's most famous anthracite mines. High in heating value—low in ash content. Very easy to start and burn.

You'll be better satisfied with top-quality Susquehanna-Glen Lyon coal. It's trade-marked for your protection with the familiar little red-and-yellow "Lion's Head" disks in every ton. Order a supply today.

APPROVED

S. H. Hiestand & Co.

SALUNGA, PA.

Phone Landisville 3221

MOUNT JOY 3-5803

First Time Ever!! COOKING SCHOOL — AND — FASHION SHOW

See the Newest in Spring Styles from the
BETTE JO SHOP

Together with the Latest Tricks from TV's
"BEHIND THE KITCHEN DOOR"
With P. P. & L.'s Mary Myers

DATE—Monday Night, January 30th

TIME—7:30 o'clock

PLACE—Marietta Elementary School Auditorium

**FREE—Gifts for All Who Attend—PLUS
Over \$75 Worth of Door Prizes**

**ELECTRIC MIXER - DRESS - STEAM IRON - PRESSURE COOKER
RADIO - AND OTHERS**

Sponsored by

Marietta P. T. A. and Pennsylvania Power & Light Co.

J. B. SPANGLER
Fridigaire Appliances
MARIETTA

BETTE JO SHOP
Fashions
MARIETTA



255 hp De Soto to pace Indianapolis "500"

Indianapolis: A 255 horsepower 1956 De Soto has been chosen to pace the 40th annual running of the Indianapolis "500" mile race classic. For terrific "green light" get-away, nothing in the medium price field even comes close to matching De Soto's blazing high torque

take-off. The almost unbelievable power surge of De Soto's sizzling 255 hp engine makes passing safer, easier. A slight nudge of the accelerator gets you by in a hurry. Come in and test drive the '56 De Soto, it's by far the most powerful car in the medium price field.

Eli Ament

Mount Joy, Pa.



We want to meet your oil burner!

We want to take full responsibility for its operation . . . to give your home safe, cheap, dependable heat with Atlantic's famous triple-refined heating oil . . . now with a new additive that helps prevent sediment from forming in your tank.

We promise prompt deliveries, routine and emergency service—day and night. Please call now and make arrangements for complete oil burner service.



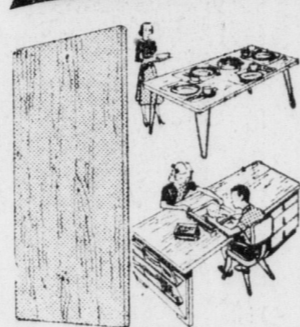
HOLLINGER OIL SERVICE

LEHIGH AVENUE
Phone Lancaster 3-3401

FLORIN, PENNA.
Ph. Mt. Joy 3-3483

SNAVELY at LANDISVILLE

MAKE-IT-YOURSELF AND SAVE
Tables—Stands—Desks from
FLUSH DOORS (GUM PAINT GRADE)



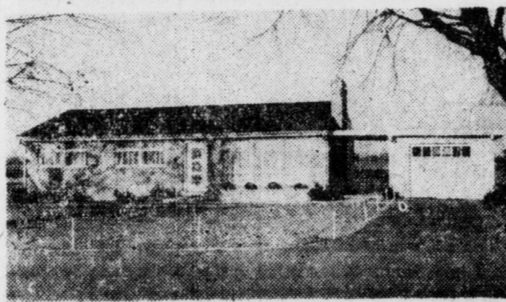
Lovely dining room tables—a desk for the den—a set of stands or a convenient coffee table are so easy to make with flush doors—and our striking wrought iron legs.

7'-0" x 6'-8" from **\$7.90**

WROUGHT IRON LEGS

Add glamour to your home.
6", per set of 4, \$3.94
12", per set of 4, \$4.98
16", per set of 4, \$5.49
22", per set of 4, \$5.98
28", per set of 4, \$6.49

SNAVELY Better-Bilt HOMES



PLAN NOW to own your own home in 1956 . . . **\$3565⁰⁰**

(for basic home)

Get all the facts. There's no obligation. Here's the home you can afford to own—pre-assembled in our own yards and shipped to your lot at unbelievable savings to you.

Mail coupon today for information and address of the Snavely Better-Bilt Home nearest you.

Please send me more information on your BETTER-BILT HOMES and the address of the Home nearest me.

Name
Address
City State
See a Snavely Better-Bilt Home and Convince Yourself of the Amazing Savings!

OUR NEW
STORE HOURS:

Monday thru Thursday 8 a. m. to 5 p. m.
OPEN FRIDAYS TILL 9 P. M.
SATURDAYS TILL 4 P. M.



Save Sagging Floors with
STEEL JACK POSTS
Screw-type steel jack post can telescope from 4 ft. 7 in. to 7 ft. 6 in.
Were \$9.00 . . . Now only **\$8.10**

Make Wood Cutting EASIER—
FASTER with gas driven
CHAIN SAWS

Two kinds: Regular or Reciprocating. With 16" guide bar and chain.
\$178.50

We Rent Chain Saws by the Hour—by the Day.
(We Supply Fuel) → Only **\$2.00** Per Hour

Special on LIGHT BULBS

Regular Inside Frosted 15 to 75 Watts
We carry a complete line of electric cords and sockets!
Now only **17c** each

Colorful Rubber Bath Mats

Bathtub Mats—for beauty . . . for safety. Perforated.
Were \$1.89 Now only **\$1.69**

SHOPPING CARTS

Easy rolling. Folds for easy storage. Usable as a laundry cart!
were \$5.95 now **\$5.35**

Garbage Pails

Galvanized Long-Lasting
10 gallon \$2.98
15 gallon \$3.30
20 gallon \$3.25
25 gallon \$4.65

Portable Lux Minute-Minder

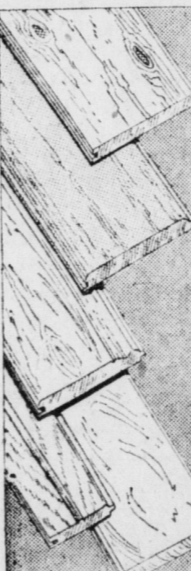
For timing dozens of daily household chores. Single "ding", white plastic case, red numerals.
Was \$3.95
Special **\$3.55**

A REAL BARGAIN!

KNOTTY PINE PANELING

8" - 10" - 12" widths
only **19½c** a board foot

When you build or remodel, there's nothing like Knotty Pine Paneling to add Character and Beauty.



J. C. **SNAVELY** & Sons, Inc.
at **LANDISVILLE**
LUMBER • MILLWORK • BUILDING SUPPLIES • FEED • HARDWARE