

# Acme Markets

Shop Acme for Real Savings Every Day and Guaranteed Satisfaction

Um-m-m! There's Real Eating Pleasure Ahead when it's a Lancaster Steak

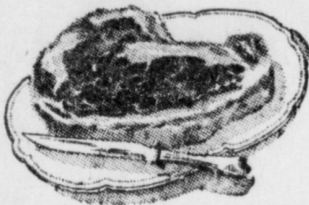
There's never any question about a Steak or Roast if it comes from the Acme because only at the Acme can you get Lancaster Brand U. S. Gov't. Graded "Choice" Steer Beef - - - and what a treat it is. It's QUALITY Beef - - - CHOICE Beef - - - cut from young, western corn-fed steers and you know it will be extra tender, juicy and flavorful. Get a steak this week - - - TASTE and SEE.

Lancaster Brand U. S. Choice

**SIRLOIN STEAKS**

lb **69c**

The kind you would expect to pay 95c or \$1.05 a lb. for



**SHOULDER ROAST** lb **59c**

ACME FRESHLY GROUND BEEF 3 lbs **95c**  
LANCASTER SMOKED TONGUES lb **39c**  
RING, LONG OR JUMBO BOLOGNA lb **39c**

**Fresh Boston Butts** lb **39c**

COUNTRY STYLE PUDDING lb **39c**  
COUNTRY STYLE FRESH SAUSAGE lb **49c**  
FRESH MEATY SCRAPPL' 2 lbs **29c**  
LEAN BACON ENDS lb **19c**  
BENCH-CURED SHARP CHEESE lb **59c**  
SAWYER'S PRE-COOKED FISH STICKS 3 10-oz pkgs **95c**

**Roseport Pies** Chicken, Beef or Turkey **4 for 89c**

GLENSIDE CALIF. CLING

**PEACHES** large 29-oz cans **2 55c** Halves or Slices

**HUNT'S CALIF. Fruit Cocktail** 2 No 2 1/2 cans **69c**

**HEINZ KETCHUP** 2 14-oz bots **47c**

**LIBBY'S or IDEAL Sauer Kraut** 2 27-oz cans **35c**

**Borden's Silver Cow Milk** 4 tall cans **55c**

**Louella Evap. Milk** 6 tall cans **73c**

**Speed-Up Bleach** 1 1/2-gal jug **21c**

DON'T MISS THIS BIG 19c-29c SALE Reg. 33c size Sweet, Juicy Fla.

**Oranges** doz **29c**

Large 4 for 25c size Juicy Florida **GRAPEFRUIT** 5 for **29c**

**Spinach or Kale** Washed and prepared 2 cello pkgs **29c**

**Yellow Turnips or Rutabagas** 3 lbs **19c**

**Snow-White Mushrooms** pt pkg **29c**

**U. S. 1 Yellow Onions** 4 lbs **19c**

**SWEET POTATOES** U. S. 1 Md. Golden 3 lbs **19c**

**IDEAL FORDHOOK LIMA BEANS** 2 10-oz pkgs **45c**

**IDEAL FRENCH FRIED POTATOES** 2 10-oz pkgs **29c**

**IDEAL TENDER GREEN PEAS** 2 10-oz pkgs **35c**

**IDEAL CHOPPED SPINACH** 2 10-oz pkgs **29c**

**ORANGE JUICE** Donald Duck or Thrifty Pak 6 6-oz cans **79c**

**SEABROOK FARMS CUT GREEN BEANS** 2 10-oz pkgs **49c**

OUR POPULAR HEAT-FLO ROASTED **COFFEE DOWN**

**Asco Coffee** The most popular coffee in our markets - - - rich and flavorful. Now lb **83c**

**Ideal Coffee** Full bodied - - - vacuum packed Drip or regular grind. Now lb can **89c**

**Win-Crest Coffee** Mild and mellow. Here's real coffee value. Now lb **75c**

Freshly Ground When Purchased

**Ideal Instant Coffee** 4-oz jar **79c**

Fresh Virginia Lee Bakery Treats - - -

**SUPREME SEED RYE BREAD** Special **15c**

**COCOANUT ANGELFOOD BAR CAKES** Special **35c**

**Old Fashioned Iced Cinnamon Buns** pkg 6 **25c**

**Supreme Enriched Bread** large loaf **15c**

**OLD FASHIONED HOME STYLE BREAD** 1 1/2-lb loaf **22c**

**Louella White, Protein or Whole Wheat Bread** loaf **25c**

**SUNNYDELL** 2 pts **49c**

**ICE CREAM** 1/2-gal ctn **89c**

Prices effective thru Sat., Jan. 21, 1956. Quantity Rights reserved.

THE BULLETIN, Mount Joy, Pa. Thursday, January 19

## The Pennsylvania Story

Harrisburg — During the past week - as we have off and on for the past twenty years - we converged with some fear and trepidation, along with half a million other rubber-necks, upon the Farm Show here in Harrisburg.

Certainly this event is as much a part of the Pennsylvania story and the Pennsylvania picture as any event. Perhaps in many respects, more so. Unquestionably there is no other institution like this gathering of the rural clan. It is a spectacle well worth being a part of, or being just an on-looker.

We spent the entire five days of the show at the show this year, wearing our shoeleather and muscles with reckless abandon. We covered the Farm Show story behind the scenes and in front of the scenes for just such newspapers as you are reading now - shooting pictures wherever possible.

The exhibits, displays and contest entries are enough to fascinate anyone for a month. The sideline and backstage incidents are equally interesting and amusing. On the opening night there was young George W. Leader, Governor of the good Commonwealth, making the opening speech to those squashed into the Large Arena, with his glasses skidding down on his nose. The Governor himself by the way is an actual farmer.

Tuesday afternoon there was the five or six-year old lad standing in the middle of the main exhibition area bawling at the top of his lung with a

sympathizing crowd of eager helpers milling around - until a hulking State Police Trooper gently crunched through the crowd, plucked the boy tenderly on his shoulder and strode off to find a worried mother.

And Tuesday night "backstage" during the presentation of the annual "Rural Festival Talent" pageant, some 700 milling actors chugged in a dither as they all tried to get into costume at once. Amazing? They had never rehearsed their parts together yet in the end it went as smooth as honey. In one instance when one lad couldn't find his tunic, a girl playing the part of a farmer's wife found an extra costume like her own, slipped it over his head and said, "come on, let's go - and out they went to the stage.

In the horse-pulling contest Wednesday night in the Large Arena there was the press cameraman standing by the writer, who jokingly offered the comment: "Wouldn't that make a picture of a driver flying through the air holding onto the reins if the horses should bolt as they are being hitched to the pulling-truck?"

The next second the driver did literally fly through the air for a moment - but the photographer was too busy scrambling out of the way of the snorting horses to take a picture.

On Thursday night at the log sawing contest as one of the contestants calmly removed his right shoe before each sawing

— to equally calmly replace it after he was through.

And then there was the "city slicker" as he walked aghast through the row upon row of poultry exhibits with birds a-cackle, who said to his wife in horrified mystification:

"Good gracious, imagine what this must be like when these are all waking up at once in the morning!"



LOVE, LOVE, LOVE— Webb Pierce

JUST CALL ME LONESOME— Eddie Arnold

GOOD OLD MOUNTAIN DEW— Kenny Roberts

YELLOW ROSES— Hank Snow

SATISFIED MIND— Porter Wagner

I FEEL LIKE CRYIN— Carl Smith

WAY'S APPLIANCES

Phone 3-3622 48 W. Main Street, Mount Joy

Well, that's the Farm Show. We wouldn't miss one for the world - even though this year we were recovering from a sprained ankle.

TO CELEBRATE BIRTHDAY

day January 30. Harvey C. (Shorty) Engle, Mr. Engle is employed in the West Donegal Street, will celebrate his eighty-second birthday at his home, 100 Main Street.



We're proud to display this sign!

It means we've joined with Red Rose Guaranteed Feeds to offer you the finest feeds for every farm need. Every Red Rose Feed is scientifically compounded and tested in

actual farm use for profitable feeding. Highest quality ingredients plus over a century of experience are your guarantee that only the finest feeds bear the name Red Rose.

**HEISEY POULTRY FARM**

Distributors E. MUSSER HEISEY & SON

R. D. 2, MOUNT JOY, PA.

PHONE: 3-9921 2-2c

## Announcing Plymouth's \$150,000 Lucky Motor Number Sweepstakes

# \$150,000

IN PRIZES

1ST PRIZE

**\$50,000 CASH**

2ND PRIZE

**ALL-EXPENSE WORLD TRIP FOR 2 BY AIR plus \$5,000 cash**

AND 783 OTHER BIG CASH PRIZES

3rd prize—\$5,000  
4th prize—\$2,500  
5th prize—\$1,000  
50 prizes of \$500  
75 prizes of \$250  
100 prizes of \$100  
555 prizes of \$50  
785 prizes in all—total of \$150,000

World's easiest contest—just go to any Plymouth dealer and register the motor number of your 1950 or newer model car (any make). That's all. Nothing to buy or guess or solve.

It's our chance to celebrate our record-breaking sales—and to make even more friends. It's your chance to win up to \$50,000 in cash—a thrilling around-the-world trip for two, plus \$5,000—or any one of 783 other big cash prizes.

And it's so easy to win: You merely bring proof of ownership—for your 1950 or newer model car—to any Plymouth dealer, and copy your motor number onto the FREE entry blank. See rules.

That's all there is to it! There's no obligation—nothing whatever to buy or solve or rhyme. (Sure, we hope you'll look over the new jet-age Plymouth... biggest car of the low-price three... only low-price car with Push-Button

Driving. And we hope you'll ask about Plymouth's red-hot deals.)

Don't miss this chance at \$50,000 or that exciting world trip for two. Hurry in to your dealer's now. You may have a lucky motor number!

# PLYMOUTH

Sweepstakes opens January 17—hurry in and enter now!



OFFICIAL SWEEPSTAKES RULES

1. Contest open to any person in U. S. or territories who owns a 1950 or newer model car, registered in his or her name prior to Jan. 17, 1956, except employees and their immediate families of Plymouth Motor Corp., Plymouth Division of Chrysler Corp., its advertising agencies, The Reuben H. Donnelley Corp., and Plymouth dealers.

blank. Then sign your name, address and telephone number, and have your entry signed or otherwise validated by a Plymouth dealer or salesman. Place entry in the contest entry box.

3. Winners will be selected by The Reuben H. Donnelley Corp. by blindfold drawing. 1st prize winner will be selected first—2nd prize winner, second, etc., in successive drawings. Decisions of judges final.

4. All entries become the property of Plymouth Division of Chrysler Corporation and none will be returned. Plymouth and its advertising agencies will not enter

into any correspondence with any contestant, except winners.

5. Contest opens at beginning of dealer's business day, January 17, 1956. Entries must be placed in entry box before close of dealer's business day, March 10, 1956.

6. Winners will be notified by mail by May 10, 1956. Names and addresses of winners will be posted at Plymouth dealers. Prizes awarded at Detroit, Mich.

7. Second prize winner must complete around-the-world trip within two weeks, by October 31, 1956. Total cost of trip for two not to exceed \$5,000.

8. Contest subject to Federal, State & Local regulations.

**ATTENTION**  
Dor-Jan Beauty Shoppe  
48 EAST MAIN STREET  
Will Be Closed  
FROM  
Jan. 15th To Feb. 1st  
Doris Byle, Prop.

**USED TV SETS**

AS LOW AS \$25.00

See Us For Factory Trained Service On All Appliances

**WAY'S APPLIANCES**

48 WEST MAIN STREET, MOUNT JOY, PA.

PHONE 3-3622

OPEN EVERY DAY — 9 A. M. TO 9 P. M.



"Never leave 'till tomorrow that which you can do today," said Benjamin Franklin. Thrift Week, in honor of Franklin, is a good time to honor his advice. Don't put off saving. Start your account now... keep it growing. NATIONAL THRIFT WEEK... JANUARY 17 TO 23



**The FIRST NATIONAL BANK and TRUST COMPANY of MT. JOY**  
MT. JOY... FLORIN  
All Deposits Insured up to \$10,000 with F.D.I.C.