

TSHA.  
RAL  
ACTOR  
PAVING  
CURBING  
Small  
Large  
MAYTO  
6-9179

TIME

yet  
paying  
sal-  
man.

CREDIT  
CREDIT

AL

OU

10635

INDEPENDENT

ry

KS  
S  
ed

## YOUR CHANCES THIS YEAR

- ARE:—
- 1 in 9 YOU WILL BE A HOSPITAL PATIENT.
  - 1 in 17 YOU WILL BE DISABLED IN A CAR ACCIDENT.
  - 1 in 2 THAT THE ACCIDENT WILL HAPPEN AT HOME.
  - 1 in 7 THAT IT WILL BE IN TRAFFIC.
  - 4 in 5 THAT YOU WILL BE SICK.

INSURE . . . TO BE SURE! SEE US SOON!

## WILEY & RUTT AGENCY

Fire & Casualty Insurance Specialists  
81 EAST MAIN STREET, MT. JOY PHONE 3-6911



**How Much**  
**Is Your Health Worth To You?**

When your prescription calls for drugs that seem expensive, remember this: "Today's 'wonder drugs' reduce the duration of many illnesses and thus cut down their over-all cost. Actually, they SAVE you money!"

## SLOAN'S PHARMACY

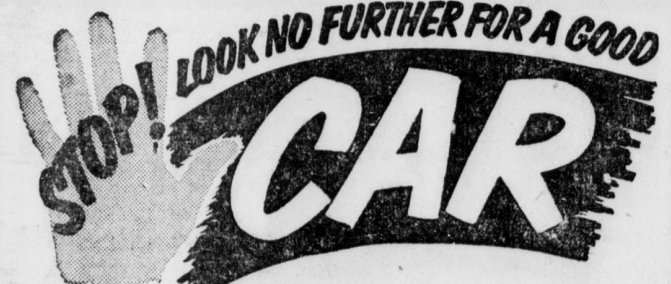
Your Health is Our Business  
The REXALL Store  
Phone 3-3001 MOUNT JOY, PA.

## Musser + Crosses

For MORE PROFIT

If you want low cost, large bodied leghorn pullets, that will be ready to lay early next Fall—  
THAT will lay large white eggs and give you substantial profit—  
THEN order your chicks direct from a (closed-flock breeder) in your own locality, who crosses blood lines within their own flock—  
THUS furnishing you with the type of resistance best fitted to combat local health problems.

- ORDER
- MUSSER, LEGHORNS FOR EGGS
  - DONEGAL CROSSES FOR BROILERS
  - DONEGAL LEGHORN CROSSES FOR MEAT & EGGS
- Musser Leghorn Farms**  
MOUNT JOY 3-4911



## Some Real Values in Nice Clean Automobiles

- |                                    |                      |
|------------------------------------|----------------------|
| 1955 FORD 4-DOOR                   | 1949 FORD 2-DOOR     |
| 1953 FORD 4 DOOR Overdrive         | 1950 FORD 2-DOOR     |
| 1953 FORD 2-DOOR                   | 1950 DESOTO 4-DOOR   |
| 1953 FORD 2-DOOR 6 cyl. Fordomatic | 1948 STUDEBAKER CLUB |
| 1952 FORD 4-DOOR 8 cyl.            |                      |
| 1952 FORD 2-DOOR 8 cyl.            |                      |
| 1951 FORD 4-DOOR Heater & Radio    |                      |

## CLARENCE W. HERR

SALES SERVICE  
MOUNT JOY PHONE 3-9701

### THE BULLETIN, Mount Joy, Pa. Thursday, January 12

#### 1-000 LOCAL AUTHORITIES FORMED

HARRISBURG—PNS— Since passage of the Municipal Authority Act by the Legislature in 1935, nearly 1000 local authorities have been incorporated, the State Department of Internal Affairs said this week.

The actual count of such local governmental agencies is 938, of which number amazingly enough, 705 have been formed in the last five years.

And equally amazing is the fact that Pennsylvania today now has almost as many municipal authorities as it has boroughs. There are 941 boroughs scattered across the Commonwealth.

The department told a Pennsylvania News Service reporter that almost half of the authorities—448 of them—are school building authorities, representing a single district or jointure.

There are 149 water authorities, 104 sewer authorities and 17 authorities which operate both water and sewer systems. Thirty-nine of the authorities are concerned solely with parking, 23 with housing and 16 with airports.

In addition there are 142 authorities engaged in a wide variety of miscellaneous activities such as slum clearance, flood control, park development, land acquisition, construction and in some instances also operation of municipal buildings, incinerators, and auditoriums.

#### LOCAL POLICE MAKE BURGLARY ARREST

Glenn Rohrer, twenty, 75 West Main Street, was charged with burglary Friday by Chief of Police Park Neiss. Rohrer, along with several juveniles, was involved in two burglaries at the Mount Joy Diner in November, which netted them \$44.

Rohrer was jailed for a hearing. William Waughtel, twenty-seven, Manheim R1, another member of the group, has been charged with four counts of burglary.

#### MARRIAGE LICENSES

Charles H. Eshleman, 59 Marietta Avenue, and Betty Jeanne Buch, Landisville.

Only stumps and second growth remain of the once great timber supply that covered Lycoming County. - PNS

#### USE COMMON SENSE IN WINTER DRIVING

HARRISBURG—PNS— Common sense rather than Lady Luck should be depended upon by motorists who want to get through the winter driving season safely, Pennsylvania highway safety officials declared this week.

"Motorists who are wise will not be taken by surprise when road and weather conditions change abruptly—for they will have their vehicles and driving habits ready to meet the test," a spokesman for the State Bureau of Highway Safety commented to a Pennsylvania News Service reporter this week.

"We can avoid getting stalled or having an accident if we give forethought to the care of our vehicles and display good judgement in their operation," he said.

It was asserted that three main threats face motorists of the Keystone State during winter months. They are: (1) reduced visibility, (2) inadequate traction, and (3) changing temperatures.

To cope with poor visibility, windshield wipers and blades must really wipe clean, free and clear of smear, and defrosters should be in tip-top working condition.

To cope with the threat of inadequate traction, negotiating snow-covered or ice roadways calls for tire chains as well as good tires and good brakes at reduced speeds.

To cope with changing temperatures, it should be realized that ice is often more slippery when near freezing than when the thermometer shows a below freezing reading.

#### SHARP DROP IN CORN BORER DAMAGE

HARRISBURG—PNS— One of the sharpest drops in corn borer damage recorded in recent years was logged up in Pennsylvania last year, according to the Department of Agriculture.

Field surveys of the department show that only 11 of every 100 corn stalks examined contained borers. This compares with 28 infested stalks in the preceding year and 40 in 1951.

Worst corn borer year ever known in Pennsylvania occurred in 1951 when Keystone State farmers suffered a loss estimated at \$5,000,000. Damage during the past year in contrast is not expected to exceed \$1,000,000.

The department has attributed a number of factors to the decline, including dry weather during the past summer when first generation borers were hatching; farmers planting their corn at the right time, and the fact that nearly all corn grown in Pennsylvania now is a hybrid origin and better able to withstand the ravages of borers.

It was noted that the building up of borer parasites has contributed to holding down damage during the season. Currently the department is cooperating in surveys on the effectiveness of parasitic flies, although the lack of an abundance of borers has handicapped these studies somewhat.

More than a score of counties throughout the state took part in the corn borer surveys during the past year and in only a half dozen did infested stalks run above ten per 100.

#### STOP HERE in good USED CARS!

- 1954 Chev. 4-dr. Sedan Power Glide, R & H
- 1953 Chevrolet Belair Sport Coupe I & H
- 1953 Ford V-8 2-Door Radio & Heater
- 1953 Olds Holiday Coupe R & H
- 1952 Chev. Club Coupe Powerglide, R & H
- 1951 Chev. 4-dr. Sedan Power Glide, R & H
- 1950 Studebaker 4-dr. Champion
- 1952 Ford V-8 1/2-ton Panel
- 1952 Ford V-8 3/4-ton Pick-up
- 1950 Chevrolet 2-Door Radio and Heater
- 1948 Chevrolet 1/2-ton Pick-up

**Newcomer Motors, Inc.**  
Phone 3-4821 Open Evenings  
MOUNT JOY, PA.

### SHARP DROP IN CORN BORER DAMAGE

HARRISBURG—PNS— One of the sharpest drops in corn borer damage recorded in recent years was logged up in Pennsylvania last year, according to the Department of Agriculture.

Field surveys of the department show that only 11 of every 100 corn stalks examined contained borers. This compares with 28 infested stalks in the preceding year and 40 in 1951.

Worst corn borer year ever known in Pennsylvania occurred in 1951 when Keystone State farmers suffered a loss estimated at \$5,000,000. Damage during the past year in contrast is not expected to exceed \$1,000,000.

The department has attributed a number of factors to the decline, including dry weather during the past summer when first generation borers were hatching; farmers planting their corn at the right time, and the fact that nearly all corn grown in Pennsylvania now is a hybrid origin and better able to withstand the ravages of borers.

It was noted that the building up of borer parasites has contributed to holding down damage during the season. Currently the department is cooperating in surveys on the effectiveness of parasitic flies, although the lack of an abundance of borers has handicapped these studies somewhat.

More than a score of counties throughout the state took part in the corn borer surveys during the past year and in only a half dozen did infested stalks run above ten per 100.

#### USE COMMON SENSE IN WINTER DRIVING

HARRISBURG—PNS— Common sense rather than Lady Luck should be depended upon by motorists who want to get through the winter driving season safely, Pennsylvania highway safety officials declared this week.

"Motorists who are wise will not be taken by surprise when road and weather conditions change abruptly—for they will have their vehicles and driving habits ready to meet the test," a spokesman for the State Bureau of Highway Safety commented to a Pennsylvania News Service reporter this week.

"We can avoid getting stalled or having an accident if we give forethought to the care of our vehicles and display good judgement in their operation," he said.

It was asserted that three main threats face motorists of the Keystone State during winter months. They are: (1) reduced visibility, (2) inadequate traction, and (3) changing temperatures.

To cope with poor visibility, windshield wipers and blades must really wipe clean, free and clear of smear, and defrosters should be in tip-top working condition.

To cope with the threat of inadequate traction, negotiating snow-covered or ice roadways calls for tire chains as well as good tires and good brakes at reduced speeds.

To cope with changing temperatures, it should be realized that ice is often more slippery when near freezing than when the thermometer shows a below freezing reading.

#### LOCAL POLICE MAKE BURGLARY ARREST

Glenn Rohrer, twenty, 75 West Main Street, was charged with burglary Friday by Chief of Police Park Neiss. Rohrer, along with several juveniles, was involved in two burglaries at the Mount Joy Diner in November, which netted them \$44.

Rohrer was jailed for a hearing. William Waughtel, twenty-seven, Manheim R1, another member of the group, has been charged with four counts of burglary.

#### MARRIAGE LICENSES

Charles H. Eshleman, 59 Marietta Avenue, and Betty Jeanne Buch, Landisville.

Only stumps and second growth remain of the once great timber supply that covered Lycoming County. - PNS

#### USE COMMON SENSE IN WINTER DRIVING

HARRISBURG—PNS— Common sense rather than Lady Luck should be depended upon by motorists who want to get through the winter driving season safely, Pennsylvania highway safety officials declared this week.

"Motorists who are wise will not be taken by surprise when road and weather conditions change abruptly—for they will have their vehicles and driving habits ready to meet the test," a spokesman for the State Bureau of Highway Safety commented to a Pennsylvania News Service reporter this week.

"We can avoid getting stalled or having an accident if we give forethought to the care of our vehicles and display good judgement in their operation," he said.

It was asserted that three main threats face motorists of the Keystone State during winter months. They are: (1) reduced visibility, (2) inadequate traction, and (3) changing temperatures.

To cope with poor visibility, windshield wipers and blades must really wipe clean, free and clear of smear, and defrosters should be in tip-top working condition.

To cope with the threat of inadequate traction, negotiating snow-covered or ice roadways calls for tire chains as well as good tires and good brakes at reduced speeds.

To cope with changing temperatures, it should be realized that ice is often more slippery when near freezing than when the thermometer shows a below freezing reading.

#### STOP HERE in good USED CARS!

- 1954 Chev. 4-dr. Sedan Power Glide, R & H
- 1953 Chevrolet Belair Sport Coupe I & H
- 1953 Ford V-8 2-Door Radio & Heater
- 1953 Olds Holiday Coupe R & H
- 1952 Chev. Club Coupe Powerglide, R & H
- 1951 Chev. 4-dr. Sedan Power Glide, R & H
- 1950 Studebaker 4-dr. Champion
- 1952 Ford V-8 1/2-ton Panel
- 1952 Ford V-8 3/4-ton Pick-up
- 1950 Chevrolet 2-Door Radio and Heater
- 1948 Chevrolet 1/2-ton Pick-up

**Newcomer Motors, Inc.**  
Phone 3-4821 Open Evenings  
MOUNT JOY, PA.

# AREA BUSINESS DIRECTORY

CONVENIENT REFERENCE TO FIRMS SERVING COMMUNITY

#### ARROW SHOP

**KINSEY ARROW SHOP**  
Chocolate Ave., FLORIN, PA.  
Phone Mt. Joy 3-4013

#### AUTOMOBILE DEALERS

**ELI AMENT AUTHORIZED**  
DE SOTO - PLYMOUTH  
Sales - Service  
Dodge "Job Rated" Trucks  
Delta & Henry Sts., MT. JOY  
Phone 3-4264

#### NISSLEY MOTORS

LINCOLN - MERCURY  
Sales - Service  
Parts & Repairs  
Main & Vine MIDDLETOWN  
Phone Middletown 4662

#### RHEEMS GARAGE

STUDEBAKER - PACKARD  
Sales & Service  
Raffensperger - Risser  
RHEEMS, Phone E-town 7-1230

#### DODGE & PLYMOUTH

Sales - Service - Parts  
Complete Repairing Service  
On All Makes Cars & Trucks  
Factory Trained Mechanics  
STEHMAN BROS.  
SALUNGA, Ph. Landisville 2911

#### CHRYSLER - PLYMOUTH

Sales - Parts - Service  
See the beautiful Chrysler  
PAUL H. STERN  
MANHEIM Phone 5-2193

#### SNYDER GARAGE

Complete Car Repairing  
Body Work and Painting  
R. D. 2 MT. JOY Ph. 3-9867

#### BUILDING CONTRACTORS

**AARON G. LONGENECKER**  
BUILDING CONTRACTOR  
MOUNT JOY R. D. 2  
Phone 3-6091

#### VETERINARIANS AID TO HEALTH PROGRAM

HARRISBURG—PNS— Pennsylvania's veterinarians this week were credited as "playing a leading part" in the control of public health programs.

The word of commendation came from State Secretary of Health Dr. Berwyn F. Mattison, who said:

"Continued collaboration of the veterinarian with epidemiologists, sanitary engineers, bacteriologists and other specialists will maintain our accomplishments and assure additional progress."

Leading up to this the Health Department head noted that a public health program on a state or local level is not complete without the assurance of wholesome milk and meat supply at all times—with "the most important purpose of milk and meat hygiene being to prevent transmission of disease to man, and as such must be considered a public health function."

H pointed out that milk and meat inspection systems have aided in diminishing the incidence of scarlet fever, diphtheria, typhoid, bovine tuberculosis, brucellosis, tularemia, salmonellosis and anthrax in addition to less important infections.

"The veterinary profession must be recognized as playing a leading part in controlling these public health problems," he said. "Continued collaboration of the veterinarian with other specialists will maintain our accomplishments and assure additional progress."

#### Dr. H.C. Killheffer Optometrist

MANHEIM  
163 S. Charlotte St.  
Telephone 5-2942  
Mon. & Wednes. 9:5-3:30  
Tues., Fri., Sat. 7:9 P. M.

#### Elmer G. Strickler

Elizabethtown, Pa. Phone 7-5171  
"YOU BUY ONLY THE INSURANCE YOU NEED UNDER MY COMPLETE"

#### Family Security

Fire - Auto - Life  
Accident & Health - Hospitalization  
AND MORTGAGE INSURANCE 35-11

#### CLEANERS

**BRUBAKER GROCERY**  
Confectionery  
Frozen Foods - Meats  
Breyers Ice Cream  
Sunday Hours: 4 to 6:30 P. M.  
Choc. Ave., Florin Ph. 3-5334

#### HEATING

**ARTHUR J. ULRICH**  
Automatic Heat  
Sales & Service  
Kitchens, Plumbing,  
Water Heaters, Water Softeners  
Box 306, Landisville, Pa.  
Phone 8122

#### INVESTMENTS

Give your dollars a chance to grow . . .  
Invest part of your income while your earning power is at its peak.  
Full information on request.  
**GING MERRITT & CO., INC.**  
DANIEL E. GARMAN  
(Bonded Representative)  
81 East Main Street  
MOUNT JOY, PENNA.  
Dial 3-6911

#### INSURANCE

**WILEY & RUTT AGENCY**  
Investments & Insurance  
85 E. Main St. Phone 3-6911  
MOUNT JOY, PA.

#### FURNITURE

**KEENER'S FURNITURE**  
Carpet - Window Shades  
Bedding - Venetian Blinds  
MARIETTA ST., PHONE 3-5601

#### FEED COMPANIES

**RED TOP GRAIN & FEED CO., INC.**  
"Quality Feed For Every Need"  
We Pay Top Prices  
For Your Grain  
Let Us Give You An Estimate  
ESHELMAN  
RED ROSE FEED  
R. O. Helwig, Mgr.  
Phone: MT. JOY 3-9791  
N. Market (On P.R.R. Sliding)  
Mount Joy

#### FLOOR COVERING

**H. B. LONGENECKER**  
SALUNGA, PA.  
Floor Covering  
All Types of Tile  
Venetian Blinds  
Mokawk Carpets  
Pittsburgh Paints  
PHONE LANDISVILLE 4012

#### FLORISTS

**RUHL'S FLOWERS**  
Member of F.T.D.  
Flowers For All Occasions  
Opposite Elementary School  
MOUNT JOY Phone 3-6001

#### FROZEN CUSTARD

**TWIN KISS DRIVE IN**  
SOFT ICE CREAM  
Reed & Bell Root Beer  
SPECIAL THIS WEEK  
BUTTERSCOTCH SUNDAE 25c  
Route 230 East of Mount Joy  
Phone 3-6635

#### FARM MACHINERY

**N. G. MYERS and SON**  
FARM SERVICE  
Allis-Chalmers  
Sales and Service  
RHEEMS Ph. E-town 7-3593

#### LUNCHEONETTE

**KULP'S LUNCHEONETTE NEWS AGENCY**  
Magazines - Toys - Gifts  
Fountain Service  
MOUNT JOY, PA.  
18 W. Main St. Phone 3-6891

#### MACHINE SHOP

**MYERS MACHINE SHOP**  
General Machine Shop Work  
Clutch & Brake Drum Trueing,  
Knife Grinding - Welding  
119 N. POPLAR ST.  
ELIZABETHTOWN, PA.  
PHONE 7-4206

#### MOVING & HAULING

**ED. KEENE**  
Moving & Hauling  
263 Marietta Ave. Phone 3-6612  
MOUNT JOY, PA.

#### GENERAL STORE

**SMITH'S GENERAL STORE**  
Fresh Meats  
Frozen Food - Groceries  
Clothing Wear  
FLORIN Phone Mt. Joy 3-5781

#### GROCERIES

**BRUBAKER GROCERY**  
Confectionery  
Frozen Foods - Meats  
Breyers Ice Cream  
Sunday Hours: 4 to 6:30 P. M.  
Choc. Ave., Florin Ph. 3-5334

#### MUSIC SHOPS

NEW & USED PIANOS  
Accordians - Guitars  
Harmonicas - Sheet Music  
Books  
**DAVID HESS MUSIC SHOP**  
106 N. Market St., Ph. 7-1365  
ELIZABETHTOWN

#### OPTOMETRIST

**Dr. JOHN H. STAUFFER**  
OPTOMETRIST  
39 E. Main St., Mount Joy, Pa.  
Telephone 3-8411  
Mon. to Sat: 10 a.m. - 4:30 p.m.  
Tuesday & Friday: 6 to 8 p.m.  
Closed all day Wednesday

#### OIL COMPANIES

**GARBER OIL COMPANY**  
TEXACO PRODUCTS  
Gasoline - Motor Oils  
Grease - Fuel Oils  
B. F. Goodrich Tires & Tubes  
5 S. Barbara St. Phone 3-9331

#### PHOTO SUPPLIES

**JOE SHAFFER**  
PHOTO SUPPLIES  
Cameras - Accessories  
Films, Etc.  
327 W. Donegal Phone 3-4604

#### PLASTERING

**REUBEN J. GOODLING**  
Plastering Contractor  
Dial 3-4518 Mt. Joy  
FLORIN, PENNA.

#### PLUMBING

**H. S. MECKLEY & SONS**  
PLUMBING - HEATING  
OIL BURNERS  
Sales and Service  
15 W. MAIN ST. PH. 3-5983

#### RESTAURANTS

**WALTER MATEER**  
RESTAURANT  
LIGHT LUNCHEES  
Submarine Sandwiches  
FLORIN Ph. Mt. Joy 3-9531

#### SERVICE STATIONS

**GEIBE RICHFIELD STATION**  
Gas - Oils  
Tires - Tubes - Batteries  
Car Washing - Waxing  
EAST MAIN ST. 3-5241

#### KAYLOR SERVICE STATION

Mobile Products  
Tires & Batteries  
Accessories  
FLORIN Phone 3-4481

#### RALPH L. WALTERS

SINCLAIR SERVICE STATION  
MT. JOY Phone 3-3181  
Goodyear Tires

#### M. M. WOLGEMUTH

TYDOL & VEEDOL PRODUCTS  
Reo Power Mowers  
Lawn Mower Sharpeners  
Ph. 3-4868 Mt. Joy FLORIN

#### ZERPHER SICO STATION

Vaseline Oil  
Car Washing & Lubrication  
Amoco Tires & Batteries  
MT. JOY ST. Phone 3-9162

#### TIRES

Kelly Springfield Tires and Service  
Westinghouse Appliances and Service  
**GEO. W. LEAMAN**  
MAIN STREET Phone 3-9351

#### WELDING

Electric Acetylene & Portable WELDING  
Wagon & Truck Body Building  
R. D. 1 MOUNT JOY  
Phone 3-4957  
**JOHN H. LUTZ**

#### WOOD SHOP

FURNITURE REPAIRING AND REUPHOLSTERING  
Cabinet Making - Woodwork  
Open Daily 9 A. M. - 5 P. M.  
Saturday Noon  
**GIEG'S WOOD SHOP**  
160 W. High St., MAYTOWN