

THIS WEEK'S SPECIAL

AT KEENER'S

**All
9x12 Wool Rugs**

IN STOCK

25% OFF

Large Selection

**KEENER'S
FURNITURE**

CARPET - BEDDING

15 31 MARIETTA AVENUE

MOUNT JOY, PA.

Now at Way's Appliances

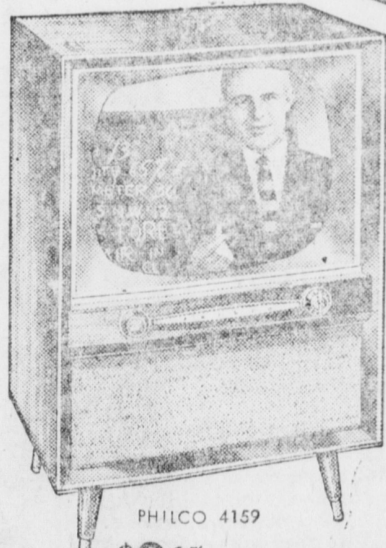
PHILCO
"Back-to-School"
TV SALE

LIMITED TIME
ONLY—ACT FAST!

"The Illustrated
ENCYCLOPEDIA
OF KNOWLEDGE"
\$105⁰⁰
VALUE

The world's newest encyclo-
pedia. 10 deluxe volumes. Com-
mended by leading educators.

ONLY \$5⁰⁰
to cover cost of
handling and shipping



PHILCO 4159
\$3¹⁵ a week

**Yours with the purchase of this
new 1956 Philco 21" console with
Top Touch Tuning**

Just a touch on the top of the set turns it on.
Just a touch changes stations. Just a touch
turns it off. It's all automatic. And in addition
to exclusive Top Touch Tuning this Mahogany
finish console has the new Philco Micro-Grid
390 Chassis and Micro-Grid Tuner that sets
a new standard of TV enjoyment.

Remote Control... Only \$10
Just a touch on the Remote Control changes
stations on your Philco clear across the room.
You never have to leave your chair.

WAY'S APPLIANCES

"WHERE YOU GET FACTORY TRAINED SERVICE"

43 W. MAIN STREET

MOUNT JOY, PENNA.

PHONE 3-3622

The Pennsylvania Story:

**Pressure To End Lengthy Session
May Bring End To Tax Deadlock**

By MASON DENISON
Pennsylvania News Service

Harrisburg — Some 260-
strong (literally not figuratively
speaking) stout-hearted mem-
bers of Pennsylvania's Legisla-
ture this week returned to Ca-
pitol Hill following a three-
week recess, with bets imme-
diately being placed as to
which would arrive back home
first to stay - the lawmakers or
the winter snows.

The question is of course
quite moot at the moment, and
as they prepare to take a Labor
Day holiday, some are wonder-
ing not unwisely perhaps, whe-
ther they will get home at all
to stay this year.

In any event they're not go-
ing anywhere until someone
comes up with the answer to
the depressing question of what
to do about Pennsylvania's near-
two-billion dollar budget.

Where the money is coming
from is anyone's guess with a
concrete solution no more in
sight than when the snows were
flying last January as the then
new and bent-for-leather ad-
ministration of Governor Lead-
er elbowed over the reins of the
sleigh.

Since those blustery days the
snows have melted and the
dash of state ground to a halt
with rust on its ancient run-
ners. It just may require a

snow to budge the bogged down
vehicle.

Few realize it but for the
past three months — since May
31 to be exact — Pennsylvan-
ia has been existing on borrow-
ed money if not time. That
date was when the old 1953-55
biennium ended and the new
\$1.8 billion budget projection
for the 1955-57 biennium began.

On-the-books taxes of a mis-
cellaneous nature continue to be
in effect and revenue therefrom
provides some help — but the
big tax or group of taxes need-
ed to underwrite the major
portion of the bill — such as
Mr. Leader's ill-fated income
tax proposal—remain to be re-
solved.

Thus the only alternative for
Pennsylvania is to borrow the
difference between actual govern-
ment cost and the revenues
turned in by the piddling taxes
already on the books. And with
the sales tax expiration August
31, the overall picture assumes
a more critical aspect with each
passing day.

Many a lawmaker is some-
what irked and frustrated over
the length of the session as it
now stands — second longest
in the history of Pennsylvania
— for each day he must spend
here in Harrisburg represents
a day away from his personal
work or business at home.

With a worried eye they look
back on the 1951 year-long
session which found some mem-
bers returning home only to
that they had lost their job.

The point is, the pressure
will now be on from many of
the rank and file members of
the Legislature to get the cur-
rent session over and done
with—which means quick solu-
tion to the thorny tax problem.

This may or not be the prime
factor in breaking the present
deadlock. It has happened be-
fore however — and it could
very well bear close watching.

**SPECIAL PLATES
AVAILABLE TO HAM
RADIO OPERATORS**

Amateur radio operators of
Pennsylvania who want special
registration plates for their au-
tomobiles may apply for them
starting Thursday, Sept. 1. Sec-
retary of Revenue Gerald A.
Gleason announced today.

Under the law signed by
Governor George M. Leader on
May 3, 1955, special registra-
tion plates will be provided
amateur radio operators who
are bona fide residents of
Pennsylvania and who have
been issued licenses by the
Federal Communications Com-
mission.

The special tag will be avail-
able for passenger automobiles
only, and will replace the reg-
ular license plate. It will
quickly identify the owner as
a holder of an unrevoked and
unexpired General Advanced
or Extra Class Amateur Radio
Station license in Pennsylvania.
The application blanks for
the special registration are av-
ailable at the Bureau of Motor
Vehicles in Harrisburg. Appli-
cants should write to the Bu-
reau and request Form RMA-6A.

A fee of \$3.00 will be charg-
ed each operator to cover the
cost of manufacturing and hand-
ling the special license plate.
This fee must accompany the
initial application. The regular
\$10.00 for registration will be
paid later through normal chan-
nels at the time of issuance in
early 1956.

**ELECTRIC CO'S. SPONSORS
"YOU ARE THERE" AGAIN**

After an eight-week summer
hiatus, America's Electric Light
and Power Companies has re-
sumed sponsorship of the edu-
cational CBS-TV series "You
Are There" on an alternate Sun-
day basis. Co-sponsor of the
series is Prudential Life Insur-
ance Company.

Walter Cronkite will continue
in the role of key newsman
with top CBS reporters assign-
ed to each show to give on-the-
spot coverage of the historic
events re-created.

**Dietitian Explains Operation
Of School Lunch Program**

This is the third article of
the series: The planning of menus for
the school lunch program is a
challenge as well as a responsi-
bility. Good menu planning
also helps us to serve lunches
which provide enough of the
right kinds and amounts of
foods necessary to help children
be healthy, grow properly, and
develop normally.

In previous articles I explain-
ed the basic foods that must be
included in Type A Lunch. The
first day's menu has been plan-
ned as follows:

Milk 1/2 pint: to provide cal-
cium and riboflavin, some pro-
tein, vitamin A.
Grilled Cheese Sandwiches—
2 1/2 oz. slice cheese - protein,
iron, 2 slices bread - B. Vita-
mins, Minerals, calories. 1 oz.
butter - Vitamin A, and calories
Buttered Corn, 1/2 cup: - Vita-
mins A & C, and minerals. Po-
tato Chips: - Energy needs and
calories. Apple Sauce, 1/2 cup:
Vitamin A & C, and minerals.

Now the basic body needs
are met but how about the
budget? Yes, this too must be
considered. I shall figure on
service for 100 portions and
multiply by 6 to take care of

the average of 600 which we
serve. All foods costs are
checked and charted for con-
stant use.

For 100 servings:
Grilled Cheese sandwiches—
7 1/2 lg. American Cheese \$3.38
11 loaves bread 1.87
3 lbs. butter 2.10
\$7.35
(per portion .0735)
Buttered Corn—
6 - #10 cans corn \$4.95
1/2 lb. butter .35
\$5.30
(per portion .053)
Potato Chips (per portion .025) \$2.00
Apple sauce - 6-#10 cans \$4.50
(per portion .045) 1.50
100 - 1/2 pts. milk @ 6 1/2
(per portion .065) 6.50
Food Cost - 24 cents.

The labor must be paid from
the cafeteria funds, plus other
costs of operation. Our margin
is slight but the balance usual-
ly works out even over a pe-
riod of days.

We invite your interest in
this part of our school program
and assure parents that they
are welcome to visit Donegal
High School Cafeteria during
school day to see the program
in action.

**PEEL AUTHORIZES \$50,000
FOR FLOOD RELIEF**

The Board of Directors of
Pennsylvania Power & Light
Company has authorized a con-
tribution of \$50,000 to Red
Cross Chapters in its service
area for flood relief. The an-
nouncement was made yest-
rday by Chas. E. Oakes, President
and Director of the Company,
following the monthly meeting
of the Board in the general of-
fice in Allentown.

The resolution as approved
by the utility's directors states
that the money is to be used
"in giving aid to persons in this
company's service area who are
in need of assistance as the re-
sult of the flood".

The utility company action
was motivated by the many
personal tragedies as well as
the heavy destruction of prop-
erty that befall many custom-
ers in its service area.

"Pennsylvania Power & Light
Company", Mr. Oakes said,
"considers itself a citizen of
the communities it serves. Such
citizenship provides the oppor-

tunity to make this needed con-
tribution beyond our normal
obligation of maintaining and
restoring electric service".

The flood relief contribution
by P P & L comes on the heels
of an urgent Red Cross appeal
for funds for relief in the dis-
aster areas of the northeast as
well as a request by President
Eisenhower for the nation to
"pitch in and help".

Patronize Bulletin Advertisers.

LOCAL AGENTS
Wallace D. Zerphey
Evelyn I. Zeiger

**Hospitalization and
Personal Compensation**

Through
Jay O. Kulp Agency
1023 CUMBERLAND STREET
LEBANON, Pa.
Phone 3-9833

GERMAN DOLLAR BONDS

If you hold any German Dollar
Bonds which have not been val-
idated, they must be registered
with the Validation Board for
German Dollar Bonds, 30 Broad
Street, New York 4, N. Y. prior to
February 29, 1956, to make them
eligible for settlement under the
terms of the Agreement on Ger-
man External Debts. If you have
coupons detached from such bonds,
please notify the Validation Board
of this fact.

**We Plan—
and Build
Repair and Remodel
ALL KINDS OF BUILDINGS
LEEDOM & FINK**
BOX 222
ELIZABETHTOWN
Phone Elizabethtown 7-6277.

TV SERVICE
**We Come Promptly
To Make TV Repairs**
We're as near as your telephone
... will respond promptly to
your calls for expert repairs,
anywhere, anytime!
CAR RADIO SERVICE
MOTOROLA-ZENITH - Sales and Service

DAY & BERRIER
29 W. Main Street Phone 3-8421 Mount Joy
Store Hours: Mon. thru Thurs. 9 to 6; Fri. & Sat. 9 to 9.

DR. H. JAMES ELVIN
Osteopathic Physician

Announces

THE OPENING OF HIS
OFFICE

September 1st

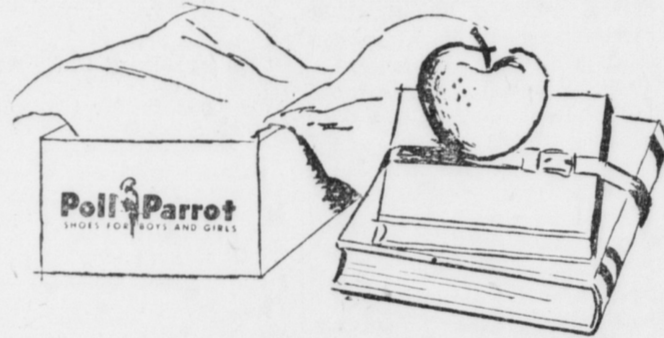
At

72 East Main Street
MOUNT JOY, PENNA.

OFFICE HOURS:
Monday - Tuesday - Wednesday - Friday - Saturday
2:00 to 4:00 6:00 to 8:00

MORNING & THURSDAY By Appointment only

Phone 3-0000



READY TO GO...

BACK-TO-SCHOOL



Poll-Parrots make the grade in any
grade. School children of all ages
go for their stylish good-looks
and comfortable fit. Parents
love the extra long wear. Pre-tested
by hard-playing youngsters,
Poll-Parrots give you real shoe value.

\$4.95 - \$6.95
according to style
and size

**Poll-Parrot
SHOES**
For Boys and Girls

FREE GIFTS
FOR ALL
CHILDREN

JACK HORNER SHOES

COLUMBIA

MOUNT JOY

CORRECTLY FITTED
CHECKED BY X-RAY