

PUBLIC SALE

- OF -
LIVESTOCK and FARMING IMPLEMENTS

SATURDAY, MARCH 5th, 1955

The undersigned will sell at Public Sale on the premises along road leading from Fruitville Pike to Roots Nurseries (about midway between East Petersburg and Manheim) in Penn Twp. Lancaster Co., Penna.

31 HEAD OF CATTLE
14 Milk Cows
some fresh on day of sale and springers.
16 Head Heifers
all vaccinated and some artificial bred.



ONE STOCK BULL
30 HEAD HOME-RAISED HOGS
1948 - 3/4 ton CHEVROLET TRUCK with cattle rack, 1953 OLDSMOBILE Super 4 dr. sed., Model 88, R. & H. 10, - 1000 miles.

OLIVER 77 TRACTOR, ALLIS CHALMERS WC TRACTOR with cultivator and Domar manure loader, ALLIS CHALMERS "C" TRACTOR with cultivator, New Holland 77 Baler, excellent condition; Allis Chalmers 60 Combine with motor, New Idea manure spreader, 7 ft. McCormick Deering grass mower, John Deere side rake, 2-row tobacco planter (Stauffer make) used 2 years, 2-row tobacco hoe, John Deere heavy duty 2-14" bottom plow, John Deere 28 disc harrow, John Deere 3 section harrow, 9 ft. clod roller, roller harrow, spike harrow, Oliver corn planter with fertilizer attachment (used 2 yrs.), Tryco crop sprayer, 30 ft. bale elevator with motor attached, 100 ft. 220 volt cord, Colby 5 ton wagon, 2 tobacco wagons (1 rubber tire), Dellinger chopping mill, New Holland corn sheller, Minnich tobacco press, tobacco shears, Prime electric fence and posts, log chains, chains, two wheelbarrows, bag wagon, silo cart, hog chute, 32 ft. extension ladder, two hog feeders, one large electric fan, 50 ft. - 220 volt cord, 50 ft. endless belt, buggy harness, sleigh bells, scalding trough and butchering tools, 30 tons of corn on the ear.

DAIRY EQUIPMENT
DeLaval milker with pipes for 15 cows, two units, milk cooler; electric dairy hot water heater, milk cans, pails, strainer, Stewart electric clipper, two platform scales.

POULTRY & EQUIPMENT
300 laying hens, (Haldeman strain), two electric brooders, three range shelters, feeders, 10x12 ft. brooder house.

HOUSEHOLD GOODS
10 Pc. Walnut veneer dining room suite, 1 extension table, Cherry Dutch cupboard, old fashioned desk, flour chest, old fashioned sink, desk, with glass top, Victrola, old lamp press, Green Monarch kitchen range, two iron kettles, oil lamps, crocks, dishes, and many other articles not mentioned.

Sale to begin at 12:00 noon when terms and conditions will be made known by
Ruhl & Dupes, Auct.
Lunch and refreshments served by the Mothers Class of Trinity E. C. Church of Lititz, Pa.

PUBLIC SALE

- OF -
Farming Implements & Household Goods

THURSDAY, MAR. 10, 1955

On the premises in West Hempfield Township, on the J. Hoffman Hershey Estate, 1 mile south of Salunga, on the road leading to Silver Spring.

FARMALL H TRACTOR
International corn planter to mount on H Tractor
FARMALL SUPER C TRACTOR
with cultivator and 7 foot International grass mower. Also Henderson manure loader for C tractor with cultivator, and slightly used.

FARMALL SUPER A TRACTOR
with cultivator and tobacco hoers. Iron age tobacco planter to mount on Farmall A, 2 Little Genius International 12 or 14 in. plows, John Deere 20 disc, slightly used; 15 disc John Deere Van Brunt, slightly used; 4-bar International side delivery rake, used one season; two 3-section spring harrows, 9 foot cultipackers, 2-section peg harrow, 2 New Idea manure spreaders, 1 like new; International horse spreader, Smoker bale conveyor with corn chute; rubber tire wagon with bed, 3 1/2 T Columbia wagon with 16 ft. Reber flats, Case rubber tire wagon, 2-horse wagon, iron wheel wagon, 2 low down Columbia wagons, rubber tire wagon, four 2-ft. tobacco wagons, one 22 ft. tobacco ladders, 20 ft. hay flats weeder, 2 Minnich tobacco presses, sizing boxes, 10 tobacco plant boxes, air compressor, 1-horse mill sled, dung sled, dung hook, scorer & scraper, platform scales 800 capacity; stripping room stove, 2-hole corn sheller with motor mounted on sheller, tobacco shears, ground scoop, lime spreader, rubber wheelbarrows, hay hook with 155 foot rope and pulleys, McCormick Deering horse cultivator, shovel harrow, 5 ft. McCormick Deering grass mower, lot of harness, grindstone, 2 gas engines, potato plow, hand plow, single, double, & triple trees; forks, shovels, hoes, all sizes, log chains, oil drums; grubbing hoes; digging iron, wrecking bars, heavy sledge hammer, a lot of No. 1 mixed hay - without rain, a lot of corn on the ear.

POULTRY EQUIPMENT
Chicken feeders, troughs, nests, 10x12 brooder house; chicken house, 9x21, easy to move, built in sections with hooks; rabbit hutch, 1930 Model A Ford sedan, also a lot of used lumber and slate.

HOUSEHOLD GOODS
Old-fashioned sink, Hot Point clothes dryer, like new; small cupboard, wooden wardrobe, kitchen cabinet, metal cabinet, Kalamazoo kitchen range - green and ivory with warming closet and water tank; large Estate Heatonia, Modern Maid cook stove, Heatonia stove, six kitchen chairs, 12 cane-seated chairs and rockers, small child's rocker, child's bed, living room suite, studio couch, kitchen table and small tables, flour chest, wood chest, dough tray, 8-day clock, Victrola, kerosene hanging lamps and other kerosene lamps, Aladdin parlor lamp and lanterns, old-fashioned tobacco seed sower, snitz dryer, roll-top desk and chair, two 9x12 rugs, carpet by the yard, lots of old-fashioned china and glass ware, meat bench and crocks, and a lot of articles too numerous to mention.

Sale to start at 12:00 noon sharp, March 10, 1955.
Terms by **HENRY M. SWEITZER**

AT THE SAME TIME AND PLACE THE FOLLOWING IMPLEMENTS WILL BE SOLD:

TWO TRACTORS
Massey Harris Tractor 101, Allis Chalmers Model C with cultivator, Case disc harrow, cultipacker, 10 ft. 2 riding horse cultivator, Coker Shutt disc plow; Holland automatic double row tobacco planter, 4 single sets tobacco ladders from 18 to 24 ft. and wagons, set double ladders, 24 ft. Massey Harris corn binder with loader, 2 Minnich tobacco presses, sizing boxes, platform scales, tobacco shears, brooder house, 10x14; Bottle gas brooder stove, stripping room stove, power lawn mower, G. E. Refrigerator, 5,000 tobacco lath, harness. A lot of articles not mentioned.
Terms by
Elmer V. Spahr, Auct.
Hertzel & Gainer, Clerks HAROLD R. NEIDIGH

PUBLIC SALE

- OF -
LIVESTOCK and FARM IMPLEMENTS

TUESDAY, MAR. 15, 1955

The undersigned will sell at Public Sale on the premises situated 1/2 mile north of Mastersonville, Rapho Twp., Lancaster County, Penna. (4 miles northwest of Manheim).

12 Cows, Holstein and Angus
some fresh on day of sale, close springers and fall cows
4 HEIFERS, 2 STEERS
4 ANGUS BABY BEEVES



Registered Berkshire Sow, 15 Shoats
650 YEARLING LEGHORN HENS, MT. HOPE STRAIN
250 - 2 YR. LEGHORN, MT. HOPE STRAIN

1948 FORD TRACTOR, Co-op side rake, 3 wagons with horse hitch, 1 low wagon, 10 hoe disc, disc grain drill, McCormick 6 ft. grain binder, New Idea 7-3 manure spreader, roller harrow, 60 T harrow, Horse drawn cultivator and grass mower, Wiard 106 plow, cultivator, potato plow, Black Hawk 2-row corn planter, brooder house, 4 range shelters, 2 Farm master brooders, water heaters, fountains, feeders, coops and nests, chopping mill, corn sheller, Platform scales, bag wagon, sleigh, harness, 66 ft. 1-1/4 in. gal. pipe, new; pipe fittings, stripping room stove, 32 ft. Extension ladder, 20 ft. 6 in. belt, Electric fence and posts, locust posts, corn fodder, ensilage doors and lumber, power lawn mower, electric hedge trimmer, berry crates, dinner bell, lot of garden and work tools.

HOUSEHOLD GOODS
5 pc. bedroom suite, two studio couches, three extension tables, six kitchen chairs, rockers, library table, buffet, Zellers kitchen cabinet, Columbia Range, kitchen heater, Happy Cooking gas range, sink basin, small tables, rope bed, child's crib, Victrola and Records, 25 yard carpet one 9x12 rug, two 11x12 rugs, 9x12 - 12x12 Linoleum rugs, lawn benches, porch chairs, rockers, copper kettle, coudron, dishes, lamps, lanterns, jars and crocks, and many other articles not mentioned.

Sale to begin at 12:30 sharp when terms and conditions will be made known by
J. H. Ruhl, Auctioneer
Refreshments to be served by Chiues Sunday School.

PUBLIC SALE

- OF -
Stock - Implements - Household Goods

SATURDAY, MARCH 5, 1955

West of Mount Joy close to Musser Bros. Leghorn Farms, Traveling Route 141 from Mount Joy to Marietta, watch for Sale Signs.

35 Head Registered & Grade Holstein Cattle
Most all vaccinated, 22 MILK COWS, 13 HEIFERS, some fresh by day of sale.

FARMALL "H" TRACTOR with cultivator, manure loader, bulldozer blade and McD, grass mower, Little Genius 14 in. bottom plow, FARMALL "A" TRACTOR, and cultivator, FERGUSON 30 with cultivator, Ford Economy 14 in. bottom plow, Ferguson disc plow, Black Hawk corn planter for Ferguson, used 1 yr., scorer, No. 76 New Holland baler, New Holland forage harvester with motor, corn & grass attachments; New Holland blower with 50 ft. of pipe, 4 rubber tire wagons, 2 New Holland slinger wagons, 3 Finchbaugh wagon up loaders, New Holland hammermill, McD liquid manure spreader, McD, 13 disc grain & fertilizer drill, McD, 23 disc harrow, 9 ft. cultipacker, New Idea tobacco planter, bale elevator with motor, 2 ton feed mixer with 5 h.p. motor, Hoover potato digger, 1 row corn planter, dump rake, side delivery rake, Swab wagon bed, 1-horse scorer, square back sleigh, 1,000 lb. Fairbanks platform scales, cement mixer with motor, straw cutter, No. 250 flame gun, garden sprayer; Keystone dehorner, Stewart clippers, log and other chains, DeLaval milker, with 2 units; McD, 6-can milk cooler, water heater, washing trough, Egg-O-Matic egg cleaner and grader, oil burner brooder stoves, 2 range shelters, forks, shovels, tools of all kinds, 800 bushels corn.

HOUSEHOLD GOODS—Kelvinator refrigerator, Easy electric ironer, kitchen cabinet, Mascot kitchen heater, 8 ft. extension table, beds, chairs, 7x12 tent, iron kettle, house shutters, bucket-a-day hot water heater & tank, plumbing fixtures, old German locks and a lot of articles too numerous to mention.

Sale to start at 12:00 noon when conditions will be made known by
JOS. M. WOLGEMUTH
Dupes, Hess, Gerberich, Aucts.
Lands & Krabbill, Clerks

PUBLIC SALE

- OF -
VALUABLE FARM

THURSDAY, MARCH 10, 1955

The undersigned will offer at Public Sale on the premises located along road leading from Sporting Hill to East Fairview Church (about 1 mile west of Sporting Hill) in Rapho Twp. Lancaster County, Penna.

All that certain tract of land containing 31 acres, more or less, of which 7 acres is in meadow with stream and 3 acres woodland. Large farm pond located south of buildings.
Erected thereon is a

2 1/2 Story
Frame Dwelling



with apartment with asbestos roof, containing: 1st floor - modern kitchen, containing sink, wall cupboards, dishwasher, gas stove, Hot Water Heater, water pressure system, dining room, living room with stone fireplace, knotty pine paneling, bedroom, bath, 2nd floor - kitchen, dining room, large living room, bedroom, bath.
2 CAR GARAGE connected to dwelling, large sun porch. Excellent spring and never failing well.
FRAME BANK BARN
slate and tin roof, cemented suitable for cows, steel pens, stripping room, and tobacco cellar, water and electric piped to barn. Room to hang six acres of tobacco, pig sty, corn barn and implement shed. Cement block impervious shed.
This is an ideal farm with good location. Farm buildings are in excellent condition and repair.
Persons desiring to view premises may call anytime after 5:00 P. M. weekdays and all day Saturdays.
Sale to begin at 2:00 P. M. when terms and conditions will be made known by
J. H. Ruhl, Auct.
Refreshments to be served by a Church Group.

THE BULLETIN, Mount Joy, Pa.
Thursday, March 3

Pointers Given For Preparation Of Tobacco Seed

The last two years, tobacco of quality was picked up first at better prices, than the poor quality. To grow better quality, you need a good supply of strong, vigorous, healthy plants to set in the field at planting time. Wildfire is one of the most destructive diseases attacking tobacco both in the beds and in the field.

1. Clean and treat tobacco seed before planting.
2. Treat muslin and seedbed boards with formaldehyde solution before planting.
3. Sterilize seedbeds.
4. Use bordeaux spray or drench on bed after seeding before covering.
5. Water plants in morning on sunny days.
6. Use a regular seedbed spray or dust program to control disease and insects while plants are growing.
7. Spray or dust plants with DDT before pulling to control flea beetle when setting in field.
8. Do not let tobacco get overripe at harvest time.

This disease can be controlled by proper seed treatment, seed bed management and good cultural practices. Are you interested in growing a clean crop of quality tobacco this coming year? The following practices are suggested:

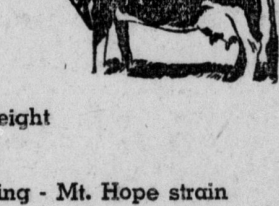
PUBLIC SALE

- OF -
LIVESTOCK and FARMING IMPLEMENTS

SATURDAY, MAR. 12, 1955

The undersigned will sell at Public Sale on the premises 1 mile north of Erisman's Mennonite Church, Rapho Township, Lancaster Co., Pa.

8 DAIRY COWS
some fresh on day of sale and close springers
3 Heifers
most vaccinated
5 STEERS - 1100 average weight
14 SHOATS - about 100 lbs.
200 LEGHORN HENS - Yearling - Mt. Hope strain



Massey Harris "81" TRACTOR, power lift, cultivator, John Deere 2 bottom 14 in. plow, McCormick 24 disc harrow, Massey Harris 3 section spring harrow, 8 ft. cultipacker, Massey Harris 7 ft. tractor mower, New Idea manure spreader, Ohio 4 wheel manure spreader, McCormick Deering side delivery rake, John Deere 17 disc grain drill, 3 rubber tire wagons, bale elevator, 2 wheel trailer, Dodge bed, Black Hawk Corn planter, 8 hole hog feeder, corn sheller, feed cart, platform scales, bag wagon, cement mixer, rubber tire wheelbarrow, Bolden Huskie Garden Tractor, cultivator and lawn mower attach, tacking, air compressor, Kerr potato cutter, grass seeder, barb wire, 200 ft. plastic pipe, 125 ft. irrigation pipe, rubber belt, fence charger and posts, small tools.

CORN, OATS, BARLEY, HAY & STRAW by the ton.
CHICKEN EQUIPMENT
Four Range shelters, brooder house, feeders, water fountains, 24 hole nests, chicken coops, Whirl-away egg washer, Coleman oil brooder, two 4-unit Infra red brooders, 1 "Vape-Gas" Oil brooder with 50 gal. drum and pipe, Egg baskets, egg scales.

DAIRY EQUIPMENT
DeLaval magnetic 1 unit milker and 8 stall cocks, milk cooler, six 85-lb. milk cans, milk can rack, strainer and buckets.
HOUSEHOLD CONTENTS
Bergal Coal and Gas Range, 8 ft. extension table, 7 ft. extension table, 5 half spindle plank bottom chairs, player piano, 9x12 rug, dishes, crocks, jars and many other items too numerous to mention.

Sale to begin at 12:00 noon when terms and conditions will be made known by
Ruhl and Dupes, Aucts.
No Hucksters Please.

PUBLIC SALE

- OF -
Livestock - Implements - Household Goods

THURSDAY, MARCH 17, 1955

The undersigned will sell at public sale on the premises, one mile west of Salunga, on the road to Eshelman's Stone Quarry in West Hempfield Township.

8 Head Holstein Cows
some fresh by day of sale, some back cows, some close springers.
10 Fat Steers, 1 Fat Bull
450 LEGHORN LAYING HENS (Musser Strain)



FARMING IMPLEMENTS
FARMALL H TRACTOR in good running order, FARMALL A TRACTOR, in good shape, with cultivators and tobacco hoers; Manure loader for Farmall A tractor, tobacco planter for Farmall A tractor, McDeering tractor mower, used 3 seasons; Deering Ideal mower, John Deere 14 in. Mouldboard plow, John Deere 2 bottom disc plow, Case Combine with clover seed huller, Ontario 9 hoe grain drill with horse and tractor hitch, McDeering 3 bar hay rake, McDeering cultipacker, John Deere disc harrow, New rubber tire wagon with bed, 3 tobacco ladders, 22 ft. Andes make 20 ft. 18 ft. spring harrow, spike harrow, 2 horse drawn riding cultivators, 2 walking cultivators, Papec ensilage cutter, with pipes; land roller, Letz chopping mill, corn sheller, hay flats, 16 ft.; John Deere 2-horse gas engine, John Deere corn planter, No. 999.

1950 FORD PICK-UP TRUCK
Oliver plow, cement mixer, bag wagon, hay rope, heavy block & falls, 2 small block & falls, 5 ton hydraulic jack, manure sled, heavy duty air jack, wagon jack, coal brooder stove, tobacco cellar stove, 50 ft. 6 in. Gandy belt, 2 heavy log chains, other light chains, 2 chicken shelters, 50 locust posts, electric fence post, 3 sets work harness, collars, bridges, SURGE MILKER, 2 unit with piping, WILSON MILK COOLER (4 can capacity) 8 milk cans, buckets strainer electric motors (one 1 H.P. one 1/2 H.P. one 3/4 H.P.); Whirl-away egg washer, egg baskets, fountains & feeders, grain and hay forks, 2 aluminum shovels, 3 other shovels, quarry tools & bar, sledge & wood wedges, Minnich tobacco press, platform scales, poultry clock, Empire meat grinder, sausage stuffer, meat bench, drill press, vice; fence stretcher; 1000 tobacco lath, Stewart live stock clipper, 30 ft. extension ladder, Some corn on the ear. Some carpenter tools.

HOUSEHOLD GOODS
Two beds with springs, sideboard, chairs and rockers, tubs, crocks, and many other articles too numerous to mention.
No hucksters please - Refreshments to be served by the Gospel Cheer Band of Mount Joy Mennonite Church.
Sale to commence at 12:00 Noon. Terms by
Edgar F. Funk, Auct.
Bletz & Greider, Clerks
Reuben M. Shearer

Milton Grove Sportsmen Hear Game Protector

The Milton Grove Sportsmen Club held their regular monthly meeting, Feb. 25 at their new club house.

John M. Haverstick, district game protector, gave a short talk on game propagation. He also discussed some of the methods being used by the Pennsylvania Game Commission to provide cover and feed for wildlife on State Game Lands.

Clarence Leshar of Lancaster showed colored slides of his hunting trip to British Columbia, Canada. He gave an interesting and colorful description of his trip and the trophies he bagged.

Final plans for the shooting match to be held Friday, April 1, 1955, were discussed. The match will be held at the new club house with the winners to receive hams as prizes.

"Our industrial potential, our advanced technology, our wealth as it is sometimes called, are all simply the fruits of the more basic and fundamental seeds - the seeds of human freedom and personal initiative." - Henry B. DuPont.

"Inmate in bureaucracy are three implacable spirits. They are self-perpetuation, expansion of their empires, and demand for more power." - Herbert Hoover.

300 Area Residents Not Receiving Benefits Available To Them

There are about 300 residents of this area who are survivors of workers who died between July 1, 1940, and August 31, 1950, who are not receiving survivors insurance monthly payments because they have not yet taken advantage of the benefit rights specifically provided for them in the 1954 amendments to the Social Security Act.

A recent change in the Social Security law will now permit the payment of monthly benefits in many cases to qualified survivors where none were payable before. The deceased worker must have had at least one year and a half of work under social security, and that there must now be a survivor eligible to receive such payments.

These survivors would be a child still under the age of 18, the mother of such a child, or the worker's widow if she is over 65. In some instances the parents of a deceased wage earner may be eligible if they were dependent upon him for their support.

PUBLIC SALE

- OF -
LIVESTOCK and FARM IMPLEMENTS

WEDNESDAY, MAR. 9, 1955

The undersigned will sell at Public Sale on the premises situate in Penn Twp., 1 1/2 miles Southeast of Manheim Borough along Public Road leading from Route No. 72 to Fruitville Pike.

21 COWS, Holstein & Guernsey
T. B. blood tested;
5 HEAD OF HEIFERS
Some vaccinated
300 - LEGHORN HENS - 300

2 OLIVER 70's TRACTORS, 1 OLIVER "80" TRACTOR, 1945 ALLIS CHALMERS "B" TRACTOR with plow, power mower, cultivator, Fertilizer attachment, Oliver cultivator, Oliver grass mower, 22B, Oliver grain drill, 1940 Chevrolet 1/2 ton pick-up truck, 2 rubber tire wagons, Horn manure loader, utility trailer, McDee hay dryer, New Idea manure spreader, Tryco sprayer, John Deere 2-bottom plow, McCormick heavy duty disk, corn planter, spring harrow, lime drill, Cultipacker, silage cart, Feed cart, air compressor, 2 tobacco presses, tobacco shears, sizing boxes, tobacco lath, 2 tobacco ladders, 3 range shelters, metal chicken nests, Water fountains, Feeders, two 6 bulb Infra-red brooders, 15 Gal. safe-gard water heater, rubber tire wheelbarrow, DeLaval milker, 2 units, 6 can milk cooler, twin wash tubs, milk cans - 85 lb., Choremaster garden tractor, Stearns 18" Power Lawn Mower, Stewart electric clippers, Black and Decker Electric Drill, 40 ft. ladder, garden tools and hose.

HOUSEHOLD GOODS
3 pc. living room suite, dining room suite, bedroom suite, 3 beds, Esco Freezer, Majestic range, 1/2 doz. plank bottom chairs, plank bottom rocker, old fashioned desk, piano, two library tables, floor lamps, two linoleum 9x12 rugs, base cabinet, chests, cupboards, electric butter churn, home pasteurizer, dishes, jars, cooking utensils and many other articles too numerous to mention.

Sale to begin at 12:00 noon when terms and conditions will be made known by
Ruhl and Dupes, Aucts.
Refreshments will be served by the Society of Farm Women No. 5.

PUBLIC SALE

- OF -
Farming Implements and Dairy Equipment

FRIDAY, MARCH 18, 1955

Four miles west of Landisville, 3 miles south of Mount Joy, at Penn Peaceful Farms.

JOHN DEERE A TRACTOR
with new rubber, lights and starter,
JOHN DEERE A TRACTOR
JOHN DEERE B TRACTOR

Cultivator and harrow attachment for John Deere B, Grass Mower for John Deere B, John Deere Harvester P. T., John Deere 6 ft. Combine P. T., No. 77 New Holland Baler used 3 seasons, equip with wagon hitch; loading chute and hydro-rotomatic bale tension. John Deere blower & pipe, John Deere 4-row corn planter with fertilizer attachment, 14 disc Ontario tractor drill, New Idea manure spreader, Cockshutt 3 bottom disc plow, rubber tire wagon with wire wheels and bed, rubber tire wagon with flat bed, 2 unloading units and motor, New Idea side delivery rake, McD disc harrow, 2 bottom rubber tire John Deere plow, air compressor, 2 tobacco ladders, soil pulverizer, weeder and seeder, circular saw and buck, Perry harrow, spike harrow, two shovel harrows, horse plow, lime spreader, riding cultivator, score & scraper, 3-section spring harrow, Minnich tobacco presses, sizing boxes, platform scales, tobacco shears, tobacco scaffolding, box wagon, MILK COOLERS, milk cans, motor, pump and piping, 3 MILKING UNITS, 1 LARGE MILKING UNIT, milk buckets, weaning bucket, water buckets, double wash tub, milk strainers, electric radiator, electric water heater, strip top feed carts, air tires and solid rubber tires, ensilage cart, endless rubber belt, home utility electric drill, grease gun filler, grease guns, neck chains, baler twine, 2 sets front gears, stove, forks, shovels, tools, hammer mill, corn sheller, and many other articles too numerous to mention.

Sale to commence at 12:30 p. m. when conditions will be made known by
Dupes & Gerbrich, Aucts.
Landis & Miller, Clerks
HOOK & GINDER