

PUBLIC SALE

Livestock - Farm Implements - Poultry - Equipment

FRIDAY, MARCH 11, 1955

Will be offered at Public Sale on the premises in Rapho Township, 3 1/2 miles southeast of Mt. Joy, 2 miles southwest of Salunga, and 2 miles north of the Chestnut Hill Mennonite Church, near Newcomer's Quarry, the following Livestock, Farm Implements, Poultry & Poultry Equipment, to wit:



19 Head Dairy Cattle

Consisting of 15 Holsteins, 2 Guernseys, and 2 Heifers. This is a good producing herd in all stages of production.

9 - STOCK BULLS - 9
TWO PUREBRED POLAND CHINA SOWS, due to farrow April 1
250 NEW HAMPSHIRE RED YEARLING CHICKENS
50 BARRED CROSS YEARLING CHICKENS
PAIR WHITE CHINA GEESSE PAIR OF GRAY GEESSE

FARM EQUIPMENT

THREE TRACTORS

1950 W.D. ALLIS-CHALMERS, with Cultivator, A. C. Mounted Disc Plow, MODEL B ALLIS CHALMERS, with Manure Loader, Cultivator and Weeder; (Platforms for both A.C. Tractors; winter Hood for W.D. or W.C.; V.C. CASE TRACTOR, with Cultivator; Wheel Weights for all tractors; Tobacco Hoers for Model B

NEW HOLLAND "77" BALER, with Starter and Bale Tension, used 3 seasons; John Deere No. 5 2-Bottom 14-in. Tractor Plow, on rubber; John Deere 13 Disc Grain Drill; John Deere Semi-Mounted 7-Ft. Mower; Case 4-Bar Side-Delivery Rake, used two seasons; CASE MANURE SPREADER on Rubber; Case Corn Planter, with Fertilizer Attachment; Bemis Tobacco Planter; McCormick-Deering 28 Disc Harrow; John Deere 3-Section Spring Harrow; 8-Ft. Cultivator; 9-Ft. Land Roller; 24" BALER; EL-E-VATOR, complete with Corn Chute (will rise 22 ft.); Constalk Shredder; Two Rubber-tired Wagons, with 7x16-Ft. Beds; Two Iron-wheel Wagons, with 18-Ft. Tobacco Ladders; Double Tobacco Ladders, 22 Ft. Long; Cannon Corn Shelter; Hammer Mill; Ward Walking Plow; 2- and 3-Row Scorers; Water Tank on Iron-Wheel Wagon; Loading Chute; Air Compressor; 2-Wheelbarrows; Feed Cart; Ensilage Cart; Stripping Room Stove; 3 Fence Controllers; Wire & Fence Posts; Sprinkler; Hose; Large Electric Barn Clock; Walkie-Talkie; Child's 3-Ft. Sliding Board; Porch Swing; Rabbit Hutch; Tobacco Boxes & Muslin; Hog Feeders & Waterers; Forks; Hoers; Shovels; Chains; Jacks, Etc.

600 BUSHELS OF EAR CORN
POULTRY EQUIPMENT—12x14 Ft. Brooder House; 5 Range Shelters (3 with aluminum roofing); 2 Electric 500-chick size Brooders; 1 Infra 500-chick size Brooder; Battery Brooder; Feeders & Fountains; Nests and Roosts; Egg Scales; Four Large Wire Baskets; Chicken Crates.

MILKING EQUIPMENT—TWO-UNIT DeLAVAL MAGNETIC MILKER, with piping and stall cocks for 18 cows; 4-CAN ESCO COOLER; 2 Electric Water Heaters; 16 Can; Wash Trough; Can Hoist; Stewart Electric Clippers; Buckets; Strainers, and many other articles not mentioned.

COMBINATION COAL & GAS RANGE
Sale to start at 12:00 noon (sharp) on Friday, March 11, 1955, when terms will be made known by

Abe Diefenbach, Auct. J. Robert Eshleman
Refreshments by the Salunga Fire Company Auxillary 9-c

GREEN GARDENS FARM

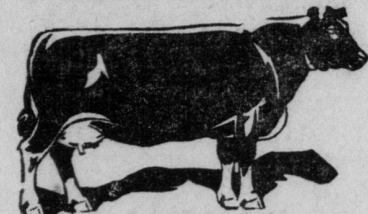
Complete Dispersal Sale

55 Head of Registered Holstein Cattle

BANGS CERTIFIED, T. B. ACCREDITED, CALFHOOD VACCINATED

MONDAY, MARCH 14, 1955

AT 1:00 O'CLOCK NOON
Location—In Lancaster Co., 12 miles west of Lancaster, 2 miles west of Manheim on the Colebrook Road near Lancaster Junction.



31 Head COWS

Some are fresh or close. Others due through out the year. 5 bred heifers, 16 heifers from one month to one year old.

D.H.I.A. Herd Average. For 5 yrs. 475; Fat Including Burke Snow Col. 3789118
359 days 24,585 Milk 801.6 Fat
Limeacres Bessie DeKo. 2557049
7 yrs. 365 days 21,601 milk 780.8
Riven Rag Apple Queen 3104982
4 yrs. 365 days 19,643 milk 753.7 fat
and many others from 400 to 600 lbs. of fat.
5 daughters of Creston Twenty Grand 90600
9 daughters of C C Sires, 1 Dau. of Dunloggin King Var
4 daughters of Red Rose Posch Ormsby Ned. 853297
3 Sires—Including the herd sire - Ormsby Pabst Korndyke 1151693
his dam the great show cow, Ormsby Korndyke Granton Carnation,
365 days 2x 24,150 milk 3.8% 901.0 Fat and his is Pabst Regal,
Jr. Sire—Harden Farms Deen Forward 1163468
Sire—Dunloggin Deen Var Dam—Harden Farms King Esteem
she has 5 yrs. 24,394 milk 868.0 fat
For the last 5 years this herd was one of the high herds in the county.
If in need of foundation stock be sure to see this herd sell. You will see animals to your liking.
For catalog write to Harvey Rettew, Sale Manager, Manheim, Pa. R. 2.

Aucts.—Dupes & Hess
Frank T. Earhart, Owner
MANHEIM, PA. R. D. 1

WEDNES., MARCH 23rd, 1955

AT 12:00 O'CLOCK NOON AT THE ABOVE LOCATION
COMPLETE LINE OF FARM MACHINERY INCLUDING:

FARMALL SUPER M. TRACTOR, 3 bottom mounted disc plow, FARMALL H TRACTOR & cultivator, (was reconitioned) New Holland Manure Loader, New Holland Potato harvester, 8-row potato duster on Ford, Boggs Potato Grader, Trexler potato cutter, 12 ft. potato bag elevator, 20 ft. aluminum grain elevator, Ruth 30 ft. bale elevator, Meyers hay crusher, Robinson hay dryer with 5 HP motor, Kelly Duplex feed mixer (one ton), Jay Bee hammer mill, 2 feed carts, John Deere forage harvester, New Idea rake & tedder used one year, 12A New Idea Manure spreader, Coop. manure spreader, Bemis 2-row tobacco planter, Horn stalk shredder, Ontario Grain drill with 14 disc, 10 ft. Graham plow, 2 rubber tire wagons with 6 ply-tires and beds with side boards, Flinchbaugh wagon unloader, John Deere 2 bottom 14 in. Plow, 3 section McDeering spring harrow, 60 tooth spike harrow, A.C. six ft. combine with motor, 3 tobacco wagons with ladders, 10 ft. 5 bar weeder, tractor grass mower, wheelbarrow grass seeder, Papee Blower with 45 ft. pipe, grass seed drill, 3 shovel harrows, walking plow, Davis grain kripmer, New Holland corn sheller, 12 ft. truck bed with side boards, Set truck chains, set tractor chains, 11x38; 90 ft. rubber belt, Rototiller 26 in., circular saw, Fairbanks platform scales, scalding trough, fence charger, posts & wire, 2 set disc hillers, for IH cultivator, 2 bag wagons, drill press, grain bin for hauling grain from combine, taps from both sides, Minnich tobacco press, sizing boxes.

DAIRY EQUIPMENT—No. 40 DeLaval milker, 2 units with extra pail, pipe for 40 cows, 6 can Ureo milk cooler, 4 can Ureo milk cooler, 36 85-lbs. milk cans, strainers, buckets, 2 barn fans 26 in. air Vac, 36 in. hunter fan; 2 electric clippers, (Stewart).
Lunch will be served.

Aucts.—Dupes & Hess
Frank T. Earhart, Owner
MANHEIM, PA. R. D. 1

PUBLIC SALE

IMPLEMENTS - HOUSEHOLD GOODS

Wednesday, March 9, 1955

South of Rheems along the road leading to the Landis Stone Meal Plant.

ALLIS CHALMERS TRACTOR with W. D. cultivator, Heat House for W. C. W 30 McD Tractor, 5 foot cut Case combine with P. T. O., John Deere Potato digger, P. T. O., John Deere side delivery rake, Cooy Manure Spreader, P. T. O., John Deere 28 inch disc, McD trailer mower - 5 foot cut, Ontario Drill - 8 hole, David Bradley lime spreader - trailer type, McD 2 row potato planter, 14 in. Massey Harris tractor plow, rapee ensilage cutter with attachments, Land roller, McD corn binder, 2 half flats, rubber tire wagon with bed, Rubber tire semi-trailer with bed, 1 Utility trailer, three wagons with ladders, one double set tobacco ladders, weeder, 3 section Spring Harrow, 2 section Spike Harrow, Niagara Duster - 6 Row double seated sleigh, 1 single seated sleigh, Wheelbarrow, Tobacco Press, Tobacco Shears, Right-Way 2 Unit Milking Machine and Strainer, 1 range shelter, 1 brooder stove, two electric brooder stoves, Water fountain and Feeders, mixed hay and alfalfa hay and straw.

BUTCHER TOOLS
Scalding trough, copper kettle, 1 bologna slicer.
HOUSEHOLD GOODS
Beds, breakfast set, studio couch, desk, piano, sweeper; lamps; dishes, and many other articles too numerous to mention.
Refreshments will be served by the Women's Aid Society of the Fifth Church of the Brethren.

Sale to commence at 12:30 when conditions will be made known by
Dupes and Ruhl, Auctioneers
Landis and Kraybill, Clerks
M. W. Shearer
8-2c

PUBLIC SALE

FRIDAY, MARCH 18, 1955

IN THE VILLAGE OF RHEEMS ON THE RHEEMS FIRE CO. CARNIVAL GROUNDS.

Buildings, Lumber and Equipment

NO. 1 FRAME BUILDING 40x80 USED AS A DINING HALL
NO. 2 FRAME BUILDING 30x36 USED FOR STAGE
NO. 3 FRAME BUILDING 15x15
NO. 4 FRAME BUILDING 8x10

50 - 16 ft. yellow pine boards, a lot of other lumber, six - 36 ft. electric light poles, two - 25 ft. electric light poles, seven large flood lights, four ice refrigerators, one - 2-door electric refrigerator, four serving counters, six gas stoves, four hot plates, one oil stove, one - 50-gal. electric water heater, porcelain sink, four benches, one heatrola, one pot belly stove, two pianos, 50 wooden folding chairs, two oil heaters, wash bowl, fifteen - 6 ft. folding tables, three French Fryers (2-330 Mercury Fryers, 1 Frialator) French Fry cutter, six Fry Baskets, potato peeler, porcelain top table, a lot of copper wire, a lot of electric lights, concession stands, and other lumber and a lot of articles too numerous to mention.

Sale to start at 7 P. M. when conditions will be made known by the Committee:
Walter Dupes, Auctioneer
Paul Kaylor, Clerk
H. H. FLOYD
MARTIN N. HEISEY
HERBERT H. MASON
9-2c

THE BULLETIN, Mount Joy, Pa. Thursday, March 3 10

J. CLARENCE GARBER

Complete Dispersal Sale

Wednesday, Mar. 9, 1955

LANCASTER, PENNA.

To get to farm, take Route 72 and 222 to south end of Lancaster, there take 324 and go straight through New Danville and turn left at second crossroad south of New Danville. First lane right. Watch for signs.

67 Head Registered Holsteins



Bang's Certified, Calvhood Vaccinated, T. B. Accr. Eligible for shipment anywhere. Pregnancy checked, Mastitis Tested.

THESE HIGH RECORD COWS ALL SELL !!

1 has 802 lbs. fat, 4 1/2 y, 2X 4%
1 with 672 lbs. 7y, 2X 3.5%
11 from 501 to 584 lbs. fat, 2X
5 from 402 to 489 lbs. fat, 2X.

MANY SELL FROM HIGH RECORD DAMS !!

5 from 802-lb. 2X dam
5 from 600 to 672-lb. dams
27 more from 500 to 584 lb. dams

HERD OVER 20 YEARS OLD - HAS FOUR TIMES BEEN AWARDED PROGRESSIVE BREEDERS AWARD.

Be sure you attend - You'll be greatly impressed by the quality.

Sale starts 12:00. Lunch Available. Catalogs.

R. Austin Backus, Inc.

J. Clarence Garber

Sale Mgr. & Auctioneers
MEXICO, NEW YORK

Owner.
LANCASTER, PA.

9-1c

PUBLIC SALE

LIVESTOCK and FARM IMPLEMENTS

Thursday, Mar. 17, 1955

The undersigned will sell at Public Sale on the premises along the Manheim-Mastersonville Road, near Old Line Store, about 3 miles northwest of Manheim, Lancaster County, Penna.

1 pair Black Mare Mules

10 HOLSTEIN COWS



some fresh on day of sale, some springers, and fall cows.

300 MUSSER LEGHORN CHICKENS

FARMALL "H" TRACTOR, cultivators, mounted 7 ft. grass mower, John Deere 14 in. 2-bottom plow, John Deere 24 disc harrow, roller harrow, two-row corn planter, Ontario 9 hoe grain drill, McCormick riding cultivator with tobacco hoer, Birch walking plow, Figer tobacco planter, Case manure spreader, 16 ft. rubber tire wagon, 13 ft. homemade flat trailer, hay rake, Oliver 88 side delivery rake, T 33 milk cooler, Rite-way 2 unit milker, wash trough, can rack, 10 milk cans, Range Shelters, Brooder house, brooder stove, corn sheller, 10 ton corn, 4,000 tobacco lath, harness, forks and small tools.

HOUSEHOLD CONTENTS
Zenith floor model radio, Columbian Range, chairs, rockers, tables, buffet, sink, floor lamps, combination radio and record player, and many other articles not mentioned.

Sale to begin at 12:30 sharp when terms will be made known by

J. H. Ruhl, Auctioneer

Henry C. Kreiner

Refreshments will be served by the Mastersonville Fire Co.

PUBLIC SALE

LIVESTOCK and FARMING IMPLEMENTS

Tuesday, March 8, 1955

The undersigned will sell at Public Sale on the premises located along road leading from Mt. Joy to Hosler's Church (about 1 1/2 miles north of Mt. Joy near Becker's Service Station), Lancaster County, Penna.

2 HEAD MILK COWS, 1 HEIFER

1 BEEF COW, 1 YR. OLD BULL
270 MT. HOPE LEGHORN CHICKENS

FARMALL "A" TRACTOR, two new rear tires, and mounted plow, cultivators and circle saw, 14 ft. rubber tire wagon, International side rake, hayloader, John Deere manure spreader, International disc harrow, cultipacker, Superior grain drill, John Deere grass mower with tractor hitch, 1 horse wagon, horse plow, corn sheller, hog self-feeder, hot water furnace, two coal brooder stoves, chicken fountains, range shelter, wheelbarrow, Sears Roebuck, 2-can milk cooler, 150 bu. ear corn, 50 bu. barley, forks, tools; etc.

HOUSEHOLD GOODS
Columbia coal range, Estate heatrola, White Enamel coal and wood heater, extension table, 6-burner New Perfection oil stove and oven, New Perfection oil heater, 3-pc. Reed porch set, Fiber wardrobe, wooden wardrobe with five drawers, chest of drawers, Victrola with records, Cherry drop leaf table, 3 1/2 size bed and spring, six cane seated chairs, cane seated rocker, two oak rockers, low caned rocker and two chairs, Armstrong 9x12 rug, mattress, toilet set, copper kettle, apple butter erer, small tables, mirrors, dishes, cooking utensils, lamps, boy's bicycle, and many other articles not mentioned.

Sale to begin at 12:30 P. M. when terms and conditions will be made known by

J. H. Ruhl, Auct.

John Henry Hollinger

Refreshments will be served by the C. B. Y. F. of the Green Tree Church of the Brethren.

7-3c

PUBLIC SALE

LIVESTOCK and FARMING IMPLEMENTS

Monday, March 7, 1955

The undersigned will sell at Public Sale on the premises along the Elizabethtown-Manheim Road, about two miles East of Elizabethtown, Lancaster County, Penna.

9 Head of Milk Cows

some fresh on day of sale and close springers.

6 BULLS, 9 YOUNG PIGS, 150 YEARLING HY-LINE HENS, 275 HY-LINE PULLETS, 100 LEGHORN PULLETS

1953 ALLIS-CHALMERS "CA" TRACTOR with 2 bottom mounted plow, 1951 ALLIS CHALMERS "C" TRACTOR with cultivator and tobacco hoers, weeder to mount on cultivator, Allis Chalmers 5 ft. Combine, New Holland Baler, good condition; John Deere 28 disc harrow, 10 ft. cultipacker, Allis-Chalmers 3-section spring harrow, Co-op rubber tire wagon with flats, one rubber tire wagon with flats, New Idea semi-mounted mower, New Idea trailer mower, Allis Chalmers 2-row Cornplanter, McCormick 4 bar side rake, two set of double tobacco ladders, Ohio manure spreader, No. 10 New Holland hammer mill, John Deere Van Brunt disc grain drill, two row New Idea tobacco planter, McCormick 5 can milk cooler, DeLaval 2 unit milker with pipes and fittings for 13 cows, washer for DeLaval milker, hot water heater, milk wash tub, buckets, chicken feeders, water fountains and metal nests, Leola two hole hog feeder, two Whirl-a-way egg washers, Perfection egg scale, electric fence posts, copper wire, battery fence charger, 10x12 brooder house, tobacco press, hay and straw by the ton.

HOUSEHOLD GOODS
10 Pc. dining room suite, American Sun Flame oil heater with pipe, tank and fittings, Majestic coal stove.

Sale to begin at 12:30 P. M. when terms will be made known by

Ruhl & Dupes, Aucts.

John H. Zimmerman

Refreshments will be served by the Gospel Crusaders of Bossiers Church.

8-2c

Everybody In This Locality Reads The Bulletin

P.B. GUERNSEY SALE

MARCH 10th - 12:30 Noon

AT THE ASS'N. SALES PAVILION, 6 MILES EAST OF LANCASTER, PA.

Mostly fresh or heavy springers. Majority Vaccinated. Selected to please - good pedigrees - heavy milkers. Bangs and T. B. Certified.

SALE MANAGED BY: FOR CATALOGS WRITE
PENNA. GUERNSEY BREEDERS' ASSN.
P. O. BOX 491 HARRISBURG, PA.

PUBLIC SALE

40 Head of Registered Holstein Cattle

BANGS CERTIFIED, T. B. ACCREDITED, CALFHOOD VACCINATED

Complete Line of Farm Machinery

Friday, March 18, 1955-12:00 Noon

LOCATION—Midway between Mount Joy and Manheim, 1 1/2 mile north of the Manheim Road near the Back Run School House.



20 Head Cows

Many are fresh or close. The others are due through out the year.

19 Heifers

From 1 month to 2 years old. Some are bred for fall freshening.

ONE BULL

the (Herd Sire) Also 5 cows that are sired by a son of Lauxmaster, a daughter of Montvic R. A. Churchill, and 14 heifers sired by sires in the Curtis Candy Stud, including daughters of Invinible, Masterpiece, Farmer Curtis, Della Bomer, and others.

Most of these cattle were raised by us. A very nice lot of cattle. Good size, have good udders, and are of good quality.

FARM MACHINERY
FARMALL F 20 TRACTOR, FARMALL A TRACTOR with mounted plow and cultivator, and Fertilizer Attachment, and tobacco hoers, Snow plow for Farmall A, David Bradley Manure spreader, horse drawn spreader, rubber tire wagon, International side rake, 3-section spring harrow, steel roller, International tractor mower, No. 25 - 7 ft. cut, 5-ft. mower, Ontario Drill, tobacco planter, 2-bottom 12 in. John Deere Plow, 3 set tobacco ladders, Minnich tobacco press, International tractor corn planter with fertilizer attachment, G. M. C. 3/4 ton PANEL TRUCK, hog troughs, rubber-tire wheelbarrow, 2 hole corn sheller, platform scales, 2-hole hog feeder, 32 ft. extension ladder, bag wagon, high pressure 5-gal. grease gun.

DAIRY EQUIPMENT
2-unit Marlow Milker complete, Dairy hot water heater, Pick animal cleaner, two feed carts, 4-can and 2-can milk coolers, 24 milk cans, double wash tub, buckets, strainers, can rack, two Stewart Clippers, Etc.

POULTRY EQUIPMENT
Two range shelters, two 7-ft. Frigidaire refrigerators, one 6 ft. Kelvinaior, double wash tubs, 30 lbs. computing scales, No. 116 Florin Stove, commercial chicken picker with 1/2 hp. motor, gas singer, 3-burner gas stove, eight chicken coops, two 6-light Infra Red brooders, 4-light Infra Red brooder, Quaker Hoyer brooder, 500 capacity feeders, used one year, four 8 ft. automatic waterers, lot of fountains.

For catalog of the cattle write to Harvey Rettew, Manheim, Pa. Sale Manager.

Auct.—Abe Diefenbach

R. F. Stirling & Son, Owners

MANHEIM, PA. R. D. 2

Penns Peaceful Meadow Farms

Complete Dispersal Sale

65 Head of Registered Holstein Cattle

BANGS CERTIFIED, T. B. ACCREDITED, CALFHOOD VACCINATED

TUESDAY, MARCH 8th, 1955

AT 12:00 O'CLOCK NOON

Location—2 miles southeast of Mount Joy, 23 miles southeast of Harrisburg and 10 miles west of Lancaster, Pa.

32 Head of COWS



Including 15 cows that have records from 15,000 lbs. milk up to 18,954 lbs. and 500 lbs. fat to 630 fat.
8 two yr. olds with records from 10,000 lbs. to 16,528 lbs. milk, and up to 549 lbs. fat.
Selling—Van Lure Posch Wayne Boon Penna. Farm Show Grand Champion, as a 3 yr. old.

33 Head of HEIFERS

from one month to 2 years old

12 daughters of the Harrisburg Farm Show Grand Champion Weejeo Sanar. 10 daughters by the most popular Sires in the Curtis Candy Stud. This sale offers an opportunity to acquire foundation animals that would not be for sale, except in this dispersal. They are large with good udders, good test, this is one of the best herds to be sold this spring. For catalog write to Harvey Rettew, Manheim, Pa. R. D. 2. Sale Manager.

Auctioneer, Walter Dupes

Joseph A. Hook
Herman Ginder, Jr.
OPERATING PARTNERS

FRIDAY, MARCH 18, 1955 AT 12:00 O'CLOCK NOON AT THE ABOVE LOCATION. A COMPLETE LINE OF FARM MACHINERY INCLUDING, TRACTORS, BALER, ELEVATOR, AND ALL KINDS OF IMPLEMENTS USED ON A FARM OF THIS SIZE.

Lunch will be furnished.

NOTICE!

In order to collect damages on our Fidelity Ratings caused by dogs or other predatory animals, we have to notify the proper State authority. This same authority will then check the immediate neighborhood for stray dogs and other dogs with which they come in contact. This notice is given so that you will not be embarrassed in case the Authorities check the neighborhood for unlicensed dogs.

Musser Leghorn Farms

Newcomer Motors, Inc.

Phone 3-4821 Open Evenings
MOUNT JOY, PA.

1953--210 Chev. Sedan

1953 Plymouth
4-DOOR, clean

1952 Chevrolet 4-Door
Sedan

2-Tone

1952--98 Olds. Sedan

very nice

1951--98 Olds. Sedan

Heater & Radio

1953 Chev.</