

ICE CREAM

Sealtest half gallon 98c
 Cloister Dairy half gallon 95c
 Turkey Hill Dairy half gallon \$1.00

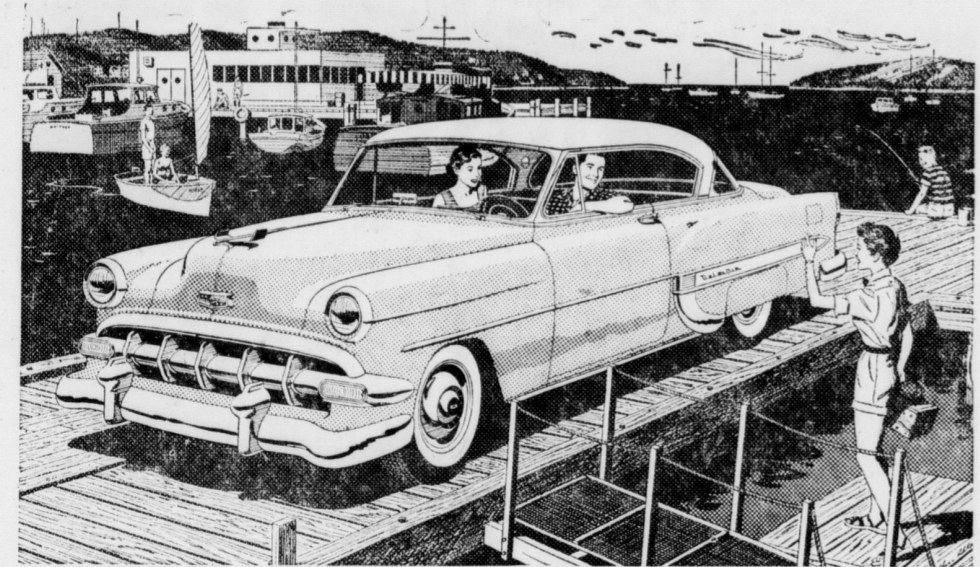
MT. JOY LOCKER PLANT
 PHONE 3-5431

High School Instrumental Program Has 139 Students

The instrumental program at Donegal high school is functioning now to include all students who are presently playing a musical instrument.

There are 139 students in grades seven to twelve now playing instruments and a waiting list of 23. Very soon, instrumental clinics will be held to obtain new students for beginning instrumental classes. There is a need for violins, violas, cellos and bass violins so that an effort will be made to enroll students on these particular instruments.

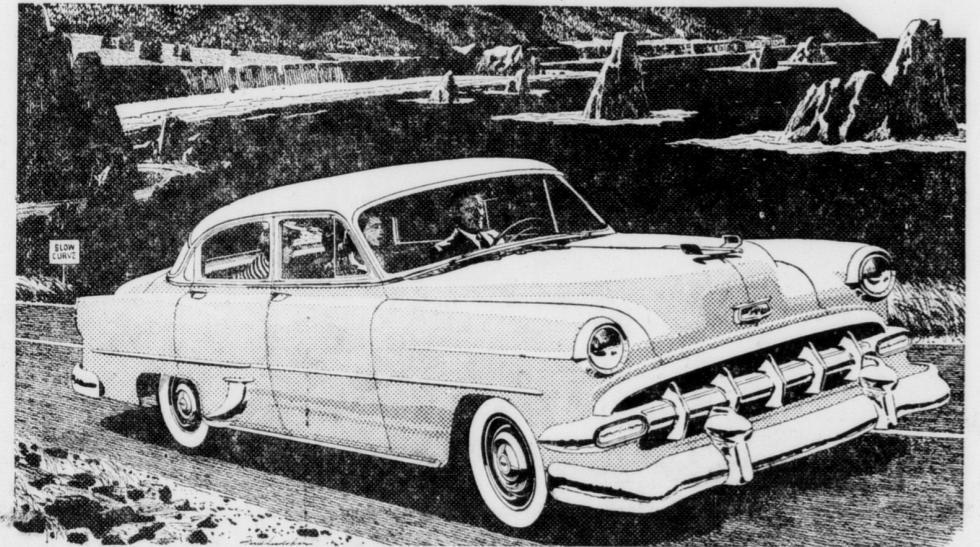
The following is a list of the students and the instruments they play: clarinets — Sonja Carver, Gloria Scholl, Betty McKain, Joanne Landis, Douglas Fish, Nancy Diller, Carole Wittle, James Rutt, Joann Stehman, Loretta Hornafius, Jon Bender, Paula Weien, Carol Druck, Joyce Berrier, John Harsh, Shirley Gutshall, Betty Frey, Barbara Becker, Marie Ebersole, Gerald Grove, Martha Sprecher, Marlene Sinegar, Phyllis Keener, Patsy Johnston, Loretta Scholl, James Zuch, Mary Ellen Smith, Willis Boyles, Dolly Boyles;



You'll always be glad you bought a Chevrolet!

Here's why in a nutshell. You save when you buy and you save when you trade. You'll stay proud of its lasting good looks. You'll enjoy luxury-car features for finer motoring. And right now you'll get the deal of the year! Come in and let us prove it to you!

YEAR AFTER YEAR, MORE PEOPLE BUY
Chevrolet
 THAN ANY OTHER CAR!

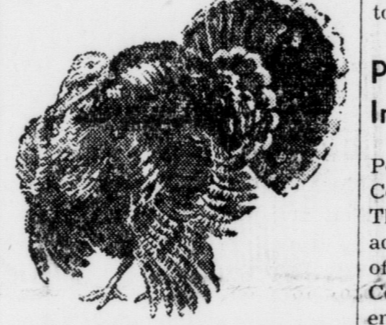


NEWCOMER MOTORS, Inc.
 MOUNT JOY, PA.

Cornets and trumpets — Arthur Hughes, Kathleen Goodall, Larry Henderson, Gary Maxwell, Ronald Pennell, Bernell Heisey, Barry Trostle, James Hecht, Linda Felty, Robert Buchanauer, Lee Newcomer, Harold Etsell, Tony Martin, Patty Mihalik, Shirley Metzler, Carl Rohm, James Mumma, Betty Brooks, Kenneth Wittle, Gerald Becker, Larry Landis, Robert Swartz, Peter Nissley, Donald Faber, Lawrence Wittle, Doris Groff.

Alto saxophone — Nancy Jo Detwiler, Dixie Bair, Sara Gutshall, Richard Bowers, Kenneth Young, Sylvia Mumper, Robert

CORN-FED TURKEYS



Dressed or live weight
EUGENE S. KREIDER
 R. D. 2 MOUNT JOY, PA.
 PHONE 3-9036 40-tfc

Glossbrenner Church Has Record Year

The Glossbrenner E. U. B. Church, Florin recently closed one of the best years in the time of the present pastorate.

Annual church report shows a net membership increase of 11 per cent over the previous year. Forty-eight new members were received into the fellowship of the church during the year. The attendance at worship services increased 27 per cent.

This necessitated a second morning worship service at 8:15 a. m. The response to his venture is so gratifying that the services are being continued through October and the first Sunday in November.

Church school average attendance of 299 is a nine per cent increase over last year.

In the area of finances large increases were noted. The church treasury increase is 34 percent and the church school increase is 22 per cent. A missionary project of supplying the funds to build a parsonage in Africa honoring the late Dr. John Musselman was originally scheduled to take two years. The obligation will be liquidated in one year.

The church continues to share very largely in the life of the community. A brotherhood softball team won 18 and lost 7. The Ladies Aid is of constant service. Two Girl Scout troops, one Boy Scout troop and one Brownie troop all meet at their scheduled times in the Glossbrenner church. The Community Youth Center is in almost constant use, and the rest of the building is used for various group meetings. The church invites other community-minded groups to make use of the facilities to the limit the schedule will allow.

The recent church school rally day goals of 425 present and accruing to the common stock of Pennsylvania Power & Light Company for the 12 months ended Aug. 31, 1954 were \$16,027,373, equivalent to \$2.84 per share of common stock outstanding at such date, as compared with \$13,151,005 or \$2.67 per share on a pro forma consolidated basis for the 12 months ended Aug. 31, 1953.

Consolidated revenues for the 12 months ended Aug. 31, 1954 were \$107,974,854, an increase of 3.6% over the revenues for the previous year.

P. P. & L. Report Increased Earnings

Consolidated earnings of the Pennsylvania Power & Light Company and its subsidiary, The Scranton Electric Company, \$2,500 were exceeded. The number present was 436, and a cash offering of \$3162 was received. The present indebtedness on the new church school and parsonage is now \$25,000. Its original cost in 1952, including the furnishings, was \$85,000.

Attendance at the two morning worship services last Sunday for world wide communion was 270. This greatly overtaxes the auditorium with its seating capacity of 145. The evening service registered an attendance of 61.

Violins — Joan Shuman, Peter Carpenter, Elaine Showalter, Audrey Musser, Mary Ann Felty, Scott Carpenter, Renate Platzoder, Patsy Hawthorne, Ann Young;

Trombones — Jewella Engle, Jack Gilbert, Barry Brandt, Sam Harnish, Jeffrey Brian, Jacob Zeller, Jere Rutt, Barry Stehman, Michael Mumma, Gary Stark, Sam Williams, David Nissley, John Funk;

Flutes — Audrey Appley, Linda Kleiner, Richard Becker, Jean Bucher, Darla Kulp, Patsy Secrist, Kay Kauffman, Judy Naugle, Barbara Martin;

Percussion — Sarah Jane Portner, Leroy Hollar, Daisy Brooks, Ronald Hawthorne, Scott Carpenter, Connie Wisegarver, Faye Buckwalter, Asher Halbleib, James Nissley, Sam Zuch, Robert Reisch, Pat Peters, Gary Zellers, Magdalene Dritz, Jerry Buchanauer, Jackie Rohm, Donald Zeller, Roger Bates, Rodney Stoner;

Baritone — Barry Barnhart, Phillip Rovenolt, Fred Bernhard, Violas — Dorothy Fletcher, Carolyn Showalter;

Cellos — Carol Ginder;

Oboes — Aglala Stephanis, Susan Frey, Judy Ginder, Joanne Bixler;

Tenor saxophones — Jack McKain, Ronald Singer, Barry Shellenberger, Sally Ann Hollinger, Jay Kaylor;

Horns — Carl Hamlin, Norma Eiheler, Roger Mumper;

Basses — Kenneth Good, Harold Ginder, Gene Newcomer

The Bottlers will play at the Mount Joy Farm Show, Oct. 14. At the same time, Kenneth and Audrey Appley will play several selections on the marimba. Students who plan to play an instrument of any kind may begin at any time by contacting Mr. Shields, instrumental director.

When in need of Printing (anything) kindly remember the Bulletin

Stimulate your business by advertising in the Bulletin

Carload Trade-In Sale

AUTOMATIC WASHERS
REFRIGERATORS
FREEZERS
DRYERS

\$50 or More for Your Old Appliance

GEO. W. LEAMAN
 208 East Main St. MOUNT JOY Phone 3-9351 40-1c

"I'm glad you telephoned ahead for an appointment"

When important matters come up suddenly and appointments must be made quickly—the telephone is first choice of busy people. Working hours today are so crowded and time so precious that a "telephone appointment" helps both parties.

With reduction on federal excise taxes from 25% to 10% long distance service costs less than ever. Rates are especially low after 6 PM and on Sunday. So whenever quick action is called for—call for it the fast low cost way—by long distance telephone.

COLUMBIA TELEPHONE CO.

Today's Farmers are almost 3 times as big as their fathers!

Not in height or weight but in ability to produce for America's growing population. A generation ago, American farmers produced only enough for himself and six others. Today he supplies himself and *eighteen* others! . . . not only satisfying America's appetites but making our nation the "bread-basket of the world". Largely contributing to this achievement have been the more than 400 electric hired hands today's American farmer has available.

And, Central Eastern Pennsylvania farmers are no exception. Electric hired hands are available to every farm in PP&L's service area. In fact, PP&L has been a pioneer and leader in rural electrification. Only recently a PP&L-served farm was honored as the nation's Diamond Jubilee farm . . . possibly the world's most electrified dairy farm.

Make sure you're getting the most help you can from electric hired hands. See your PP&L Farm Representative or farm equipment dealer today! Remember, electricity doesn't cost . . . it pays!

PENNSYLVANIA POWER & LIGHT COMPANY

COMING

Rexall One Cent Sale

2 for the Price of 1 Plus 1c

SALE STARTS
WED., OCT. 13 thru SAT., OCT. 16

Sloan's Pharmacy
 Phone 3-3001
 Joy Theatre Bldg. MOUNT JOY, PA.