

Acme Markets

will be Closed Next Monday
(July 5th) Be Sure to Stock Up Early



Don't Forget Your July Family Circle Still 5c

Small, Lean Smoked HAMS

All excess skin and fat removed
45c Center Slices lb 99c

PICNICS

Small, Lean Smoked **45c**

BACON

Lean Richmond or Crispette **59c**

SKINLESS FRANKFURTS

Swift's Premium or Kesler's **45c**

Cole Slaw or Pot. Salad **25c** Swift's Bacon Ends **29c**
Ring Bologna **43c** St. Lebanon Bologna **29c**
Glendale Club Cheese **29c** Variety vac-packed Lunch Meats

Fillet of Perch **39c** Fillet of Pollock **25c**

Crab Meat Sale

Claw **59c** White **69c**

What would a picnic or barbecue be without plenty of Fresh, Soft Virginia Lee Bar-B-Que or Frankfurt

ROLLS

Reg. 19c pkgs of 8 ea **35c**

Supreme Bread

large dated loaf **15c**

Check the supreme quality and freshness guaranteed by the dated wrapper. Why pay up to 5c more—switch to Supreme.

Thin Sliced Supreme Sandwich Bread loaf **16c**
Louella Butter Bread or Protein Bread loaf **25c**

POUND CAKES

Big 59c Large 1 1/2 lbs - Va. Lee Special; only **55c**

GET THIS! A BIG

2 LB. JAR OF PURE APPLE JELLY

FOR ONLY **25c**

Talk about a Red-Hot Special - - - Stock Up!

Fresh Produce for the Week-End and Fourth

Jumbo California Pink-Meat Luscious,

Cantaloupes

Big, Meaty Jumbo 36 Size **2 for 39c**

JUICY CAL. LEMONS

doz **35c**

CAL. SEEDLESS GRAPES

lb **29c**

GEORGIA PEACHES

Hiley Belle Freestone 2 lbs **29c**

BANANAS

GOLDEN, RIPE 2 lbs **29c**

Cherries

CALIF. BING 1 lb **39c**

LOCAL RED BEETS

doz **5c**

CAL. CARROTS

2 cello pkgs **25c**

Seabrook Farms Broccoli Spears 2 10-oz pkgs **45c**

Ideal Concentrated Frozen Lemonade 2 6-oz cans **29c**

PEANUT BUTTER

Ideal Creamy 11-oz jar **33c**

WHITE MEAT TUNA

Ideal Fancy 7-oz can **37c**

STUFFED OLIVES

Milrose Spanish 6 1/2-oz pail **29c**

BONED CHICKEN

Banquet Brand 3 5-oz cans **79c**

LOAF CHEESE

Hillcrest 2 lb **73c**

TOMATO JUICE

Ideal Fancy 48-oz can **23c**

Peter Piper Mustard In re-usable measuring cup **19c**

Biggest Value in Town! Bala Club Sparkling Beverages

New Sugar 'n Spice Hot Dawg Relish 12-oz tumbler **25c**

1c SALE IDEAL TEA BAGS 64 bags; only **50c**

Prices Effective July 1-23, 1954. Quantity Rights Reserved.

County's Aluminum Plant In Operation

Recently completed in Lancaster is a modern new fabricating plant of the Aluminum Co. of America for the production of screw machine products. It was constructed at a cost in excess of \$3,000,000.

Screw machine products include a wide variety of screws, nuts, bolts, rivets, nails and washers; and such miscellaneous standard items as pipe plugs, U-bolts, studs and stud bolts, binding screws, pipe and tube fittings and numerals. In addition, special products will be made at Alcoa's new plant to fit customers specifications.

Plans for construction of this aluminum skinned plant were announced December 3, 1952. When in full production about two years from now, the plant will employ about 450 people and have an annual payroll of close to two and a half million dollars.

Some years ago, the management of Alcoa realized the necessity of having a separate plant large enough and well situated to handle the growing demand for aluminum screw machine products. And with the need to make room for a planned expansion of other facilities at Alcoa's Edgewater, N. J. operations, the Company began scouting around for a new site on which to build a screw machine products plant.

In excess of fifty acres of land were needed by Alcoa on which to erect such facilities.

Lancaster County was picked as the site for a number of reasons:

1. It had enough land of the proper type.
2. It had desirable housing locations for both native Lancaster people and for the new citizens who came to this area from other Alcoa locations.
3. It has an excellent reservoir of the type of people Alcoa desires for employees.
4. It has good transportation facilities for importing raw materials and shipping finished products.
5. It is in a good position to serve market areas.

Alco found what it wanted—along the Fruitville Pike near the bypass—and since January 1953, has gradually been taking its place in the community as an integral part of Lancaster's growing industrial scenery.

Many new and special features are included in Aluminum Company of America's new industrial plant in Lancaster. Several hundred feet to the rear of the plant is a waste treatment plant to handle all dyes, oily wastes, acid and caustic waste. It is a two story building, with a basement, thirty feet high, 23 feet long and 21 feet wide. All waste material from the manufacturing plant will be drawn on through pipes to this building.

To give some idea of the plant's output, 200 million rivets, 60 million fasteners and 40 million nails will be manufactured monthly. These products will be shipped all over the country, some to be distributed right in Lancaster.

At the start, the plant will

use 100,000 gallons of water per day. When in full production, some 300,000 gallons may be used daily.

Aside from being an attractive plant in which to work, much thought has been given to factors of safety and comfort.

On the safety side, the whole plant has a sprinkler system as a fire preventative. Machinery, well guarded to protect employees from flying particles, has up-to-date exhaust systems to carry out heat & vapors resulting from their operation. And in the chemical sections, employees wear acid-proof clothing.

The Lancaster Works has a Medical Department—a standard Alcoa hospital—with all the equipment of a modern dispensary such as x-ray machine, etc. A registered nurse is on duty full-time and a local doctor on call when needed and to give periodic examinations.

To handle a large volume of private transportation, a parking area was built in front of the office building to accommodate 256 automobiles. At present, no public transportation facilities are available. As the area is built-up, public transportation may be extended to the plant. In anticipation of such future accommodations, a bus-way was built along side the parking lot with a shelter.

Church Group Plans

(From page 1)
also conduct workshop sessions throughout the convention. A unique feature of this year's convention will be the pastor's session.

Wednesday evening Dr. James DeForest Murch, editor of the ACTION magazine and past president of the National Sunday School Association, will address the convention on the subject, "Revival in the Sunday School Movement in America." Preceding his address, a chorus of Franklin County young people will present a musical program.

Thursday evening Dr. Harold Garner speaks on "Goals for Sunday School Advance." He also serves as a day speaker. Dr. Garner is the director of religious education at Moody Bible Institute. The musical program that evening will be featured by the Fairland Mixed Chorus from near Lebanon, Pa.

Friday evening the Kohler Sisters from Ashland, O., ages 5, 7 and 10 years old, will present a unique musical program; followed by an address, "Labor Trouble," by Dr. Lee Roberson, pastor of a Sunday school in Chattanooga, Tenn., which has an attendance of over 3500. Dr. Roberson will also address the convocate during the day.

BB GUNS ARE OUTLAWED

The burgess, Titus Rutt, has given instructions to the borough policemen to enforce the firearms ordinance. The ordinance at the present time will be particularly aimed at the BB guns which are being used within the borough limits.

When in need of Printing. (anything) kindly remember the Bulletin

Baking Preferences Of Farm Homemakers Found

If your family were from the South, you might put biscuits on the table 30 or more times a month. That's one thing found in a study of housing preferences of American farm folks by the U.S. Department of Agriculture.

Doris L. Conklin, extension home management specialist, of Penn State, reports that the Pennsylvania farm homemakers made yeast breads more often. Only one-tenth of the Southern homemakers preferred yeast breads.

The favorite baked products of women in this study were pies and cakes. More than half the women in the four regions studied—Northeast, North Central, West, South—made two or more pies at a time. Seventy per cent of the women made pies three or four times a month.

WAY'S RECORD CORNER

SKINNIE MINNIE FISHTAIL—Teresa Brewer

HIT AND RUN AFFAIR—Perry Como

IN THE CHAPEL IN THE MOONLIGHT—Kitty Kallen

I'M A FOOL TO CARE—Les Paul

CRAZY 'BOUT YOU BABY—The Crew Cuts

SOMEONE ELSE'S ROSES—Doris Day

THE LITTLE SHOEMAKER—The Gay Lords

WAY'S APPLIANCES

Phone 3-3622

48 W. Main Street, Mount Joy

MURPHY'S for BARBECUE and PICNIC NEEDS

TAM O'SHANTER GALLON

CAMP JUGS

\$1.97

One gallon size jug, glass lined, with plastic cup lid. Insulated to keep liquids hot or cold for hours. Green plaid baked-on enamel finish. Be sure to have one at this price for picnics!

TARTAN TOTER

\$2.98

One gallon size; aluminum lined, fiberglass insulated. Outside enameled in green plaid pattern. Convenient carrying handle.

G.C. Murphy Co.

14 - 16 WEST MAIN STREET MOUNT JOY, PENNA.

For Your Holiday Safety YEAR'S GREATEST TIRE VALUE!

Now—the safest, smartest tires in town for only a few dollars more than ordinary tires!

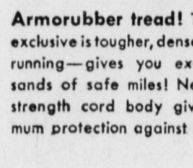
CELEBRITY by KELLY



TRADE NOW! Here's the tire built especially for car owners who want premium-tire smartness, safety and comfort at a more-than-reasonable price. Yes, the Celebrity is the safest, smartest tire on wheels today—and our wonderful trade-in allowance makes it more than worth your while to trade right away!



Amazing Stopping Power! Kelly's new, exclusive tread design—with thousands of sharp-angled gripping edges—gives you the traction needed for modern driving... the greatest stopping qualities of any tire made!



Armorubber tread! This Kelly exclusive is tougher, denser, cooler-running—gives you extra thousands of safe miles! New, extra strength cord body gives maximum protection against blowouts.



White-for-life sidewalls! Better-balanced whitewall area is protected against curb scuffing, stays white for the life of the tire. This smarter looking tire improves the appearance of any car!

SPECIAL TIRE-EXCHANGE OFFER!

\$40 OR MORE!

for your present tires in trade for a set of new KELLY CELEBRITY TIRES—depending on size and condition

*One of 6 new reasons why folks are saying, "SEE YOUR KELLY DEALER FIRST!"

GEO. W. LEAMAN

Save Your Cash — Use Our Easy Payment Plan
208 East Main St. MOUNT JOY Phone 3-9351



Why bank around? BANK HERE!

- SAVINGS THIS WAY
- CHECKING ACCOUNTS THAT AWAY
- PERSONAL LOANS 1 MILE
- AUTO FINANCING KEEP GOING
- HOME IMPROVEMENT LOANS
- TRAVELERS CHECKS

There's no need to go to one part of town for one bank service and a different part of town for another. You can do all your banking at one convenient time and place—right here!

Among the services at your disposal when you visit this bank are these:

- Savings Accounts
- Bank Money Orders
- Checking Accounts
- Auto Loans
- Travelers' Checks
- Personal Loans
- Home Improvement Loans

The right place for all of these bank services is the bank. With a single stop here you can take care of all your banking needs. Rates on loans are reasonable and you'll enjoy the kind of service you have every right to expect.



The FIRST NATIONAL BANK and TRUST COMPANY of MT. JOY
MT. JOY --- FLORIN
All Deposits Insured up to \$10,000 with F.D.I.C.