

# Acme Markets

## JUNE FOOD FESTIVAL



Here's Another Super Special!  
Lang's Family Choice Dill

# Pickles

A BIG QUART JAR for only **19¢**

Get enough for your picnics, outings and outdoor meals -- a full quart jar for only 19¢.

## IDEAL FANCY PREPARED APPLE SAUCE

4 16-oz cans **69¢**



- |                                    |              |            |
|------------------------------------|--------------|------------|
| <b>TENDER PEAS</b> Farmdale Brand  | 2 16-oz cans | <b>29¢</b> |
| <b>GOLDEN CORN</b> Ideal Kernels   | 4 16-oz cans | <b>69¢</b> |
| <b>GREEN BEANS</b> Farmdale Cut    | 2 16-oz cans | <b>29¢</b> |
| <b>CLING PEACHES</b> Hunt's Halves | No 2 1/2 can | <b>25¢</b> |

- |                                      |                            |               |                     |                        |
|--------------------------------------|----------------------------|---------------|---------------------|------------------------|
| <b>VINEGAR</b> Ideal Pure Cider      | pt <b>13¢</b>              | qt <b>23¢</b> | 2-oz jar <b>59¢</b> | 4-oz jar <b>\$1.19</b> |
| <b>Instant Coffee</b>                | Quality at a Saving--Ideal |               |                     |                        |
| Quart Refrigerator Bottle <b>25¢</b> | Try it on our Guarantee    |               |                     |                        |

Every Cut of Meat You Buy Here is Guaranteed

## FRESHLY KILLED Frying Chickens

**45¢** Ready for the Pan



- |                              |            |
|------------------------------|------------|
| <b>Stewers</b> Fully Dressed | <b>45¢</b> |
| Freshly Ground Beef          | lb 39¢     |
| Lean Plate Boiling Beef      | lb 19¢     |
| Short Ribs of Beef           | lb 3 1/2   |
| Cessler's Franks             | lb 45¢     |

- |  |               |
|--|---------------|
| <b>Lean Sliced Bacon</b> Kingan's Richmond Brand | lb <b>63¢</b> |
| <b>Smoked Picnics</b> Small, Lean, Well Trimmed  | lb <b>49¢</b> |

- |                                |              |                            |     |
|--------------------------------|--------------|----------------------------|-----|
| Swift's Bologna Large or Jumbo | lb 49¢       | Glendale St. Cheese 1/2 lb | 29¢ |
| Lancaster Chicken Pies         | 3 for \$1.00 |                            |     |

- |                           |               |                     |        |
|---------------------------|---------------|---------------------|--------|
| Fancy Perch Fillets       | lb 39¢        | Filletts of Pollock | lb 25¢ |
| <b>Fancy Large Shrimp</b> | 5 lb box 3.39 |                     | lb 69¢ |

- Everyone likes the SOFTER Loaf of Supreme Enriched **BREAD**
- Large Loaf Still **15¢**
- Dated End Seal

- Last 3 Days of the Big Sale of Ideal Pure Plum **PRESERVES**
- 1/2 lb jar **19¢**
- Not 12 ozs. but a FULL POUND JAR -- Buy Now!

- |                             |            |
|-----------------------------|------------|
| Laetitia SWEET CREAM BUTTER | 1/4 lb 65¢ |
| RICHLAND CREAMERY BUTTER    | lb 63¢     |

- |                                   |               |                        |
|-----------------------------------|---------------|------------------------|
| Glendale Club Wisc. American Loaf | <b>CHEESE</b> | 2 lb box <b>73¢</b>    |
| Laetitia Homogenized Enriched     | <b>MILK</b>   | 4 tall cans <b>49¢</b> |

- |  |                         |
|--|-------------------------|
| <b>VELVEETA OR CHATEAU SLICED CHEESE</b> Glendale Club | 2 lb pkg <b>85¢</b>     |
| <b>FARMDALE DRY MILK</b>                               | 2 16-oz cans <b>59¢</b> |

- SAVE \$6.99 -- GET YOUR SET OF KAYLAN STAINLESS STEEL MIXING BOWLS
- All Four Sizes Now Offered -- 1 Qt. **89¢**, 2 Qts. **1.49**, 3 Qts. **1.69**, 4 Qts. **1.89** -- Any Size Bowl with \$10.00 purchase

- Don't Miss This Big Sale of 5 Varieties **19¢ SOMERDALE FROZEN GREEN PEAS**
- 10-oz pkg
- Spinach Leaf 14-oz pkg Chopped 12-oz pkg
- French Fries 9-oz pkg
- Chopped Broccoli 10-oz pkg
- Big 19¢ pkgs only **25¢**

- Large Ripe Cannon Ball **Watermelons**
- Whole Melon **98¢**

- |                                   |                        |
|-----------------------------------|------------------------|
| <b>TOMATOES</b> Fancy Slicing     | 2 ctns <b>29¢</b>      |
| <b>FRESH BROCCOLI</b> Local Grown | bunch <b>19¢</b>       |
| Local Beets                       | 2 bchs <b>15¢</b>      |
| Pascal Celery                     | 2 stalks <b>29¢</b>    |
| <b>IDEAL FROZEN LEMONADE</b>      | 2 6-oz cans <b>29¢</b> |

Prices Effective June 10-11-12, 1954. Quantity Rights Reserved.

## Banquet

(From page 1)

Ian Moseman, Miss Janice Brennan and Miss Jeanette Brennan; and five children of Mr. and Mrs. John Henry Hollinger, Jay, Paul, Harold, James and Miss Anna Ruth Hollinger.

**Group To Remain Intact**  
During the business meeting, the group decided to keep the association in tact and meet once every three years. They also went on record to help get the new Donegal High School Alumni Association started. A nominating committee consisting of Mrs. O. K. Snyder, Mrs. Richard Divet and Mrs. Herbert Tyndall presented a ballot which was accepted unaminously by the body. Wilbur Heistand of Salunga, will be the new president and the other officers will be O. K. Snyder, Jr., vice president; Miss Betsy Bigler, secretary and Miss Christine Weidman, treasurer.

The class of 1954 was presented to the association by the principal, Mr. Schoener and the class president, Miss Patricia Schroll, gave the acceptance for the class.

**Program Includes History**  
The program included a general history of the school from its existence until today and was told by alumni members in addition to the principals' greetings. They were Mrs. J. Eugene Eicherly, Mrs. George Brown, Charles J. Bennett, Joseph Sheaffer, Mrs. George Brose, Mrs. Walter Brandt, George Brown II, Miss Mildred Booth and John Bowman. A fashion show of school attire worn by school girls was presented and models, Marlene Mumper, Lynn Fackler, Susan Fellenbaum, Susan Schroll, Marlene Leekway, Mary Smith, Patsy Mumper and Sandra Brown, wore gowns which represented each decade from 1890 to 1950.

Joseph Moore, class of 1925, and now principal of the Lansdowne-Alden High School, Lansdowne, Pa., was the toastmaster and Mrs. George Albert, president of the association, had charge of the business meeting. The class of 1921 had 87 percent class members in attendance and the class of 1953 had the most members present.

Decorations were in charge of Miss Weidman. They included displays of class pennants, old pictures and class pins and rings. Miss Bonnie Bigler was in charge of favors and was assisted by various members of the group.

Prior to the meal, a preview openhouse was held in the new Donegal High School where guides, Shirley Eby, Mrs. Edward Lane, Constance Lane, Genevieve Zimmerman, Mary Kathryn Landvater, Glenn Forney and Daniel Wolgemuth, (school authority president) showed visitors through the school. Charles Heaps, principal of the elementary school, was on hand to show visitors through the old Mount Joy grade school.

**Histories Given**  
A sixteen-page history was given to the people in attendance at the meeting Saturday night but the demand was greater than the supply of the books.

## Donegal Reunion Is Scheduled For Next Thursday

The 41st annual reunion of the Donegal Society will be held Thursday, June 17 at historic Donegal Presbyterian Church, Donegal Springs with the Rev. Dr. Eugene Carson Blake, stated clerk of the General Assembly of the Presbyterian Church in the U. S. A. and Maj. Gen. Daniel B. Strickler, as speakers.

Also participating in the program will be the Rev. Dr. Geo. H. Shea, Quarryville, stated clerk of the Donegal Presbytery; the Rev. Harland C. Durfee, pastor of Donegal; the Westminster Fellowship Choir and the Rev. Frederick S. Price Jr., pastor of Memorial Presbyterian Church, Lancaster.

A special event on the program will be the dedication of a memorial tree in the oak grove beside the church at 2:00 p. m. in charge of Rev. Durfee. The tree, presented by Miss Elizabeth S. Bonham, York, will be dedicated as a memorial to Mrs. Herbert Hartman, who was organist for many years in the Donegal Church and Sunday School.

## Agent Is Guest On Inaugural Run

Samuel Dock, Mt. Joy railroad agent, was one of the guests on the inaugural run of the new San Francisco Chief train belonging to the Sante Fe railroads. Approximately one hundred railroaders from the east joined the 300 in the party in Chicago Saturday, June 5. The run was from Chicago to Chillicothe, Illinois and back to Chicago. While on board the train, the guests were given their meals and souvenirs of the day.

The train consisted of three-unit diesels, four diners and 4 superdome cars in addition to the regular coaches. The regular run for the new train will be between Chicago and San Francisco.

Following the train ride, the men were treated to a GreyLine tour of Chicago before returning to the east.

## VISITED HERE

Mr. and Mrs. Arthur Heise, Hamlin, Kansas, visited friends here Wednesday and expect to attend the General Conference of the Brethren in Christ church at Grantham. Mrs. Heise is the former Mary Wolgemuth, and was a resident here several years ago.

On their way to Pennsylvania they attended the graduation exercises of their son, Eugene, at Wittenberg College, Springfield, Ohio. Their daughter, Eileen, was graduated from Elizabethtown College this spring.

A second printing of the book will be done in the very near future. If anyone wishes to purchase any books, he is to get in touch with any of the officers or call the Bulletin office.

There is no better way to boost your business than by local newspaper advertising.

## Open House At Aluminum Plant

Aluminum Company of America will hold an open house at its Lancaster Works, located at the intersection of the Fruitville Pike and Route 230, Saturday, June 19.

Robert Chestnut, Works Manager announced that the program will begin at 10:00 a. m. with a brief opening ceremony at the main gate. Alcoa and public officials will participate. The plant will be open until 4:30 p. m. for employee's families, their friends and the general public. Mr. Chestnut issued an invitation to Lancaster Countians to visit the plant for a close-up view of its operations and products. A special tour route has been laid out through the plant and representative operations will be scheduled.

Ground was broken in March of 1953 for this new addition to Lancaster's industrial community and construction was completed in April of this year. This modern screw machine products plant manufactures rivets, nails, nuts, bolts, fasteners and specialty items from aluminum.

## WAY'S RECORD CORNER

- HIT AND RUN AFFAIR**—Perry Como
- THREE COINS IN THE FOUNTAIN**—Four Aces
- THE HAPPY WANDERER**—Henry Rene
- LITTLE THINGS MEAN A LOT**—Kitty Kallen
- I'M IN THE MOOD FOR LOVE**—Spike Jones
- I UNDERSTAND**—June Valli
- I LOVE YOU TRULY**—Liberace

**WAY'S APPLIANCES**  
Phone 3-3622  
48 W. Main Street, Mount Joy

## PROSPEROUS COLORADO

Colorado owes its prosperity to its unparalleled supply of minerals and livestock.

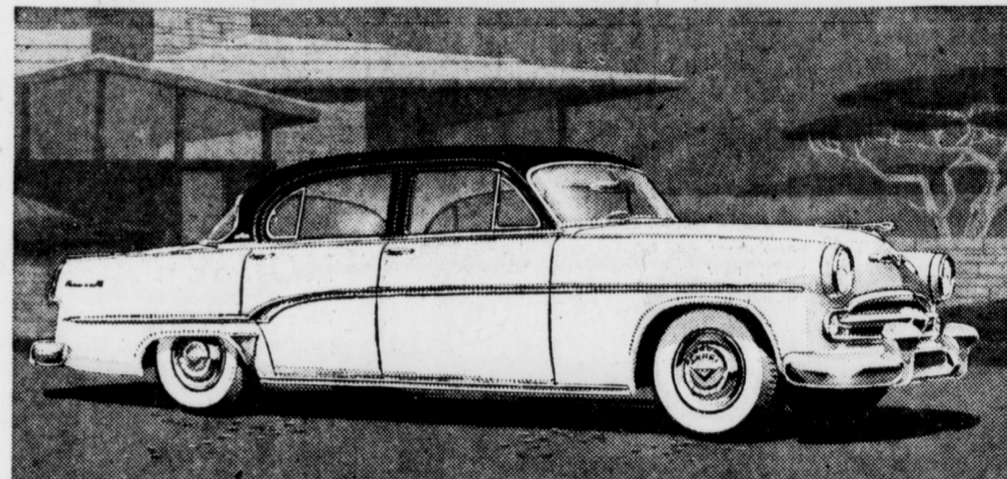
Patronize Bulletin Advertisers.

## THE BULLETIN, Mount Joy, Pa. Thursday, June 10

**PAINTED DESERT**  
The Painted Desert of Arizona extends for 300 miles along Highway 66.

**DUTCH PRESIDENTS**  
President Van Buren, Theodore Roosevelt, Franklin Roosevelt were of Dutch ancestry.

# Big, Beautiful...



Fleet, flowing lines lend style distinction to the beautiful new Dodge Royal V-8 4-door sedan. New spring colors now on display.

and born to the road!

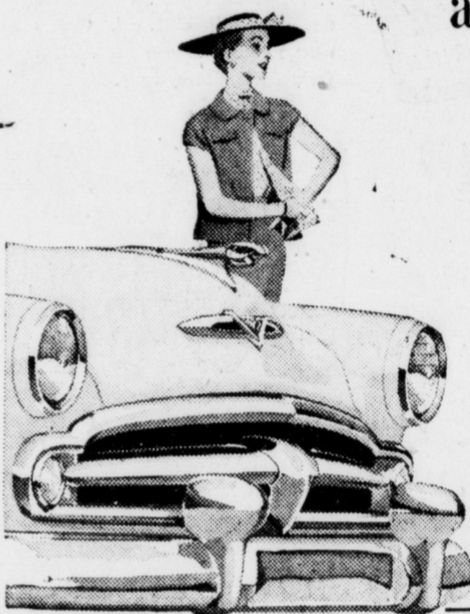
Here is beauty that is born to the road: Graceful and gracious, swift and sweeping, without a single false note of anything artificial or awkward.

When you open the door and slip behind the wheel you realize how truly big this '54 Dodge is. Big in headroom, legroom, shoulder-room. Big in the steady easy-going way it hugs the road. Big in power and performance.

Come discover the added pleasure this new Dodge offers. Prices start below many models in the lowest price field.

# DODGE

Dodge Dealers present: Danny Thomas, ABC-TV  
Bert Parks in "Break The Bank," ABC-TV • Roy Rogers, NBC Radio



**STEHLMAN BROTHERS**

Salunga, Penna.

## FATHER'S DAY JUNE 20th

Remember him on this day, HIS DAY. Drop in and let us help you. Our stock is chuck full of useful gifts which we are sure will give DAD a thrill.

HE'S DONE PLENTY—

DO PLENTY FOR HIM

Here are just a few of the many items we have to offer—

**NORTHCOOL SUITS**  
WITH EXTRA TROUSERS  
(The Daddy of them all)

**Essley Sport Shirts**  
IN LONG AND SHORT SLEEVES

We have the most beautiful line as well as the most extensive line we have ever shown in all the summers newest shades as well as the new Air-cooled fabrics. Cottons, nylons, dacrons and rayons.

**Essley Dress Shirts**  
IN WHITE AND COLORS

French cuffs — regular cuffs — Spread collars  
regular collars

**Slax And Regular Trousers**  
in tropicals and year round weights, Our line is out of this world.

**Buxton Wallets—Monogrammed Free**

**Our Neckwear**

as usual is most complete and it is gorgeous and practical.

**Pajamas—Robes—hankies—belts**  
They must be seen to be appreciated.

—If You Are Undecided About What To Give Him May We Suggest A Gift Certificate—

# ESHLEMAN BROTHERS

MOUNT JOY, PENNA.



Friendliness is a tradition at First National Bank and Trust Co. You can start your regular savings plan with as little as you wish and you're sure to find one of our plans just the one that suits you.

**THE FIRST NATIONAL BANK AND TRUST COMPANY OF MT. JOY**  
MT. JOY --- FLORIN  
All Deposits Insured up to \$10,000 with F.D.I.C.