

**HEADQUARTERS FOR**  
**RED BALL** *Weatherproofs*  
 by BALL-BAND

Widest selection in town  
 Arctic Boots Gaiters Rubbers  
 For Men, Women, Children  
 For Dress, Work or Sport  
 All sizes... All styles... All prices



**Get It At BOOTH'S**

**We've ENOUGH to do, thanks!**



There's many a mile a farmer must walk; but trips to pay bills are unnecessary. CHECKS can be sent anywhere—safely—by MAIL.

A checking account will make bill-paying easy... give you more time to "take it easy"! Let this convenience work for you. Open an account here soon.

**BANK CREDIT**  
*is the best*  
**FARM CREDIT**

**UNION NATIONAL**  
**MOUNT JOY BANK**  
 OF MOUNT JOY  
 Member of Federal Deposit Insurance Corporation

**Draught Farm Losses May Continue**

Farm losses resulting from last summer's prolonged drought may continue through the winter months unless livestock raisers guard against drought vitamin deficiencies in forage, the American Foundation warned today.

The Foundation said that hay from drought-stricken areas may have poor quality and may be low in vitamin A. Feeding of this low quality hay over an extended period could undermine the health of livestock.

Vitamin A deficiency can be a problem in swine, sheep and horses, but it is especially important in cattle. Breeding failures and weak, blind calves which cannot survive may result from this deficiency, even in cases where the cow appears normal.

The Foundation also pointed out that cattle fed on hay or ranges low in vitamin A, and later shipped to feedlots, may show signs that look like shipping fever when the vitamin lack is causing the symptoms.

Symptoms of the two conditions which are easily confused include rapid breathing, swollen legs, loss of appetite and emaciation. "Since the two conditions require entirely different treatment, a veterinary diagnosis is usually needed to determine the real trouble," the Foundation official said.

"One of the first symptoms of vitamin A deficiency in cattle is night blindness, or the inability of cattle to see in dim light. In young cattle, night blindness may progress rapidly to permanent blindness because of damage to the optic nerve.

"Corrective nutrition can help prevent losses in those areas where the drought has damaged the vitamin content of hay," the Foundation said.

**Farmers**

(From page 1)  
 County who own the Cooperative and help determine its policies are expected to attend the meeting which will open at 10 a. m. with adjournment at 3:15 p. m.

**Local**

(From page 1)

On clear days they appeared to be only a mile or two away even though they were 46 miles away. I enjoyed these surroundings during the 3 months of language study.

Then I returned to the plains to my mission station. Here I study the language with a private teacher for two hours every day but Sunday. Of course a lot more time is spent in preparing for my teacher. In fact studying the language is my only responsibility now. In the enclosed picture you will see me studying with my Hindu pundit (teacher). He is also a teacher in the local high school. I enjoy learning this language very much.

The mission house is situated in beautiful surroundings. We have many graceful coconut palm trees and banana trees on the compound. We also have many other fruit trees, nice garden space, and a rice field. On the compound 11 families live who work in the mission. The weather now is quite cold. Heavy blankets feel good these nights. We have no means of heating our house. The people here mind the cold very much as they haven't much in the way of warm clothing. In this winter season we do not have any rain. So for a period of several months the crops are watered by heavy dews. You just should see the sky at night. A great many more stars can be seen here and the moon seems much brighter. We have no electricity. We use kerosene for light and for our refrigerator.

The Christmas season was a busy one. We had three days of prize giving in our 3 schools. The school year ends here in December and begins in January. Each child is given a reward of some kind so there were many remembrances to be gotten ready. Then we sorted the clothing sent us in boxes and found something to fit all the children, and men and women on our three compounds. The part I liked best was seeing their happy faces as they received their much needed clothing. We also gift-wrapped a toy for each child. On Christmas evening many of our people gathered in the school building with various musical instruments and spent all night singing. I went for a short time and then returned home to hear them in my dreams. 4:30 in the morning they came around to each home singing and playing. We got up to greet them and then began a busy Christmas day. We had a feast of rice and curry which all the families attended. New Years Eve the people also spent singing. We had a watch night service in the building at 11 p. m.

Once I get started writing about this place and the work here I can hardly stop, but I fear I've already written too much. If anyone would like to write I'd enjoy receiving your letters. Sincerely,  
 Betty Helwig

**Homes Caused Most Accidents In 1953**

There is no place like home for hazards to life and limb. Records of rural Pennsylvania accidents in 1953 prove this conclusion, declared Lydia Tarrant, who is in charge of Home Economics Extension, Penna. State University.

"A total of 25 victims died in rural homes in 1953, according to records of the Division of Farm and Home Safety Education, State Department of Public Instruction," the home economist pointed out. "This is about 25 percent of the total rural fatalities. Twenty-one victims died in fires, two died in falls, one from coal gas and one strangled swallowing a cold pill."

Miss Tarrant urged all homemakers to inspect their homes for hazards or have some qualified person do the job.

"Get a check list of hazards from your county home agent or have your insurance agent arrange for an inspection. The Division of Farm and Home Safety Education, State Department of Public Instruction, The Capitol, Harrisburg, Pa., will be glad to send information on request," the home economist declared.

**SAVE MONEY BY READING THE ADS**

**Our Fifth**

**ANNIVERSARY**  
**Celebration**

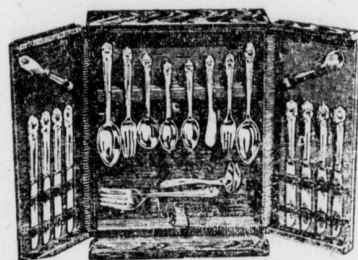
And Showing Of The

**New 1954 GE Appliances**

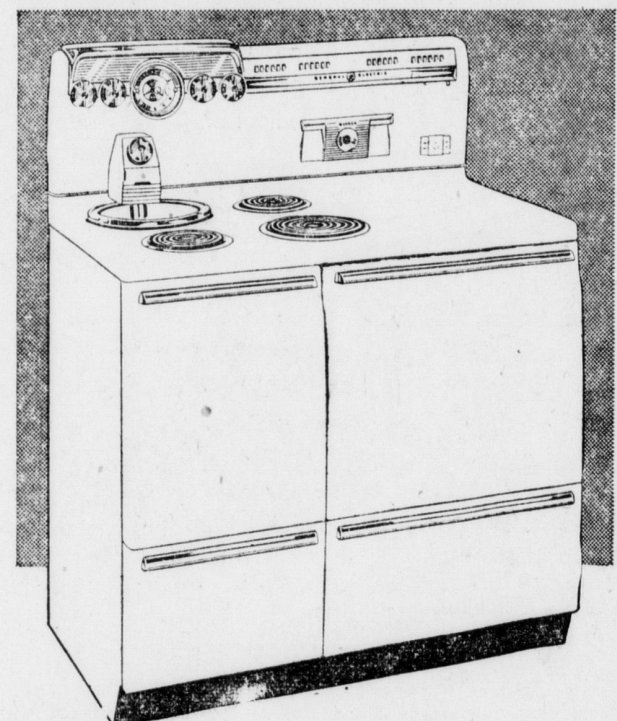
**JAN. 30<sup>th</sup> to FEB. 6<sup>th</sup>**

**This Week Only!**

**SILVER SET**  
 WITH EACH PURCHASE OF  
**MAJOR APPLIANCE**



Guaranteed Silver Set with Case will be given at no additional cost with each purchase of a Major Appliance during Our Big Anniversary Celebration.



MODEL J402 DE LUXE  
**STRATOLINER**  
 AUTOMATIC PUSHBUTTON RANGE

**NEW G-E REFRIGERATOR**  
 WITH *Revolving Shelves*

**PUTS ALL FOOD AT YOUR FINGERTIPS**

**REVOLVING SHELVES**

- Turn all the way around—in either direction
- Adjust up or down
- Super strong

**NEW DELUXE FEATURES**

- Ice cream rack—juice can dispenser
- Adjustable door shelves
- Mini-Cube ice trays
- Fold-away bottle racks

Model LH-121L  
 12.1 Cubic Feet

**FREE GIFTS!**

Everyone who comes in to see the New 1954 General Electric Appliances will receive a Free Gift . . .

**DOOR PRIZE**

Be sure to register for the FREE DOOR PRIZE. No purchase necessary.

DRAWING FEBRUARY 6th



UPRIGHT FOOD FREEZER

**Unusual Opportunity on 1953 Models!**

We have a few 1953 model Refrigerators, Ranges and Food Freezers on which we will make some unusual deals . . .

**ASK ABOUT THEM!**

**WAY'S APPLIANCES**

— WHERE YOU GET FACTORY TRAINED SERVICE —

48 W. Main St.

MOUNT JOY

Phone 3-3622

STORE HOURS:

OPEN 9 A. M. TO 9 P. M. MONDAY, TUESDAY, THURSDAY, FRIDAY, SATURDAY;  
 9 TO NOON WEDNESDAY.



**three easy steps**  
 to getting the best car buy!

**1** come in and compare the features. The full-time **power steering** that means easier parking and driving. The **Hy-Drive** no-shift driving—smoothest, least expensive no-shift drive in the low-price field. Plus many features not found in other low-price cars—or even among some of the high-price cars!

Hy-Drive and Power Steering each available at low extra cost

**2** take a new Plymouth for a trial drive... give it a real workout on the road.

**3** then tell us which of Plymouth's beautiful new models you prefer and how you'd like to pay. Our deal will be easy on your pocketbook!

hy-style new  
**'54 Plymouth**

*under the beauty*  
**solid value**

Plymouth's solid value is an established fact! For example, there are more Plymouths used as taxicabs than all other standard-built cars combined.

**your Plymouth dealer**  
 headquarters for value.

