

OWL LAFFS



BY A WISE OWL

Sure does seem odd not to have a lot of crazy hunting stories to pass on to you, but things haven't been the same since the old crowd isn't at the gas station.

Hear about the mamma and poppa bedbug who are going to have a baby in the spring?

My favorite nephew Donald got himself a hot tip on a horse and decided to let the family in on it. Late Saturday night (about midnight, it was) he called up up from the track and said: Hey, you know that horse I told you to bet on? Well, he's still running.

"Oh, my," answered my wife. "Then we still have a chance!"

Frank Shreve has a new drink he's serving. It's called a "Whistler's Mother" cocktail. "One drink and you're off your rocker."

They say opposites attract. That's why married men are attracted to single girls.

Mike: "What's the idea of racing through town at 60 miles an hour?"

Motorist: "I got something wrong with my brakes, and want to get home before something happens." — That's different!

Ronnie Garlin says he has something in his car, already, to keep it from freezing — named Daisy."

So many women these days are trying to recall their youth, but the army won't release them.

Back at Hener's the other night I overheard Bill Waltz ask Cappy why he drinks so much?

Cappy: "Why do I drink so much? Why am I always thirsty? Well, when I was operated on the doctor left a sponge inside of me!"

John: "I played crap last nite and they cleaned me."

George: "How much did you lose?"

John: "Sixty cents."

George: "You weren't very dirty, were you?"

They say a lot of germs are exchanged in kissing. Many a fellow trying to kiss a girl starts a battle. Would you call that germ warfare? — Maybe that's what the Russians are hollerin' about.

A scientist has discovered he can get milk out of a peanut.

"Willie" Ench says he will have a problem, he wants to know where the scientist will find a stool low enough.

Judge: "You're charged with driving on the sidewalk."

Defendant: "But, Your Honor, I was drunk, so I was in no condition to be driving in the street."

Always remember to keep your temper — nobody else wants it.

"Do your daughters live at home?" a Florin man asked a local Pop.

"Oh, no. They're not married yet," Pop replied.

On a crowded bus a man gave up his seat to a woman. She faint. On recovering, she thanked him. Then he fainted.

"I can't even get a sun tan on the Florida beach any more, complained a comely lady from E-town. "My husband has me shadowed so much."

A WISE OWL

THE BULLETIN
Published every Thursday at 11 East Main Street, Mount Joy, Lancaster County, Pa.
Larmon D. Smith, Publisher
John E. Schroll,
Editor and Publisher, 1901-1952
Subscription Rate \$2.50 per Year by Mail
Advertising rates upon request.
Entered at the postoffice at Mount Joy, Pa., as second-class mail under the Act of March 3, 1879.
Member, Pennsylvania Newspaper Publishers' Association.

Will Meet

(From page 1)

cannot be answered accurately. However, we can give estimates based on the knowledge of the engineer, Joseph Michaels, who has a wide range of experience of engineering the installation of sewage disposal systems.

There are three definite costs. All figures are estimates. 1. Property improvement assessment represents the increased value of our real estate and will possibly be based on a front foot basis estimated to be between \$5 and \$8 per foot; 2. Hook up fee—That flat charge of a set amount to give the sewage authority money to work with, estimated at \$200; 3. Yearly rental fee—This figure is determined by the authority by the amount of money needed to operate and maintain the system, pay the interest on the money borrowed, and retire the debts, estimated at \$30 to \$50 per year. (Note—each property owner pays his own installation from the curb connected into his house.)

The above represents estimated costs. Logically, they can vary. Let us assume that the people of Florin want a sewage disposal system of their own. Very likely, the above figures would double. Florin would build its own disposal and filtering plant, its own pumping station if needed and its own lines. This effort would be a virtual duplicate of our Mount Joy neighbors. The logical conclusion to the above assumption is—impractical economically.

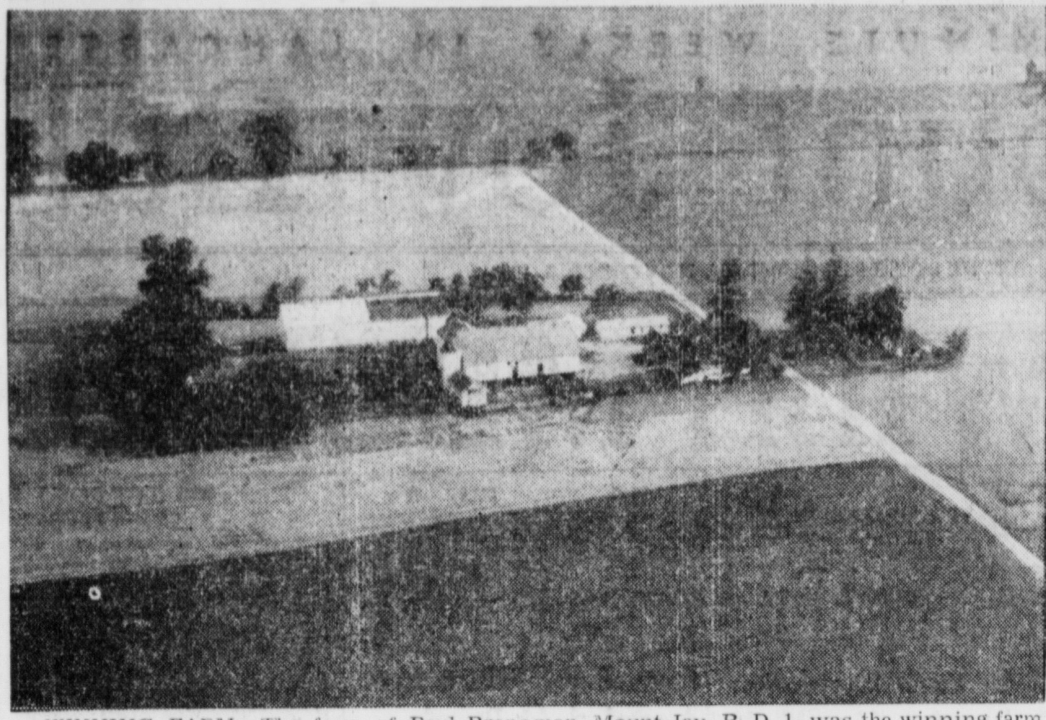
Another method would be this Florin forms its own sewage authority, lay a pipe system to the present borough lines of our neighboring borough and contract with the Mount Joy authority to carry our sewage to their disposal and filtering plant. This method would require the formation of an authority, floating a bond issue to raise the necessary capital and building our own pipe system. The Mount Joy authority will then take our sewage by contract on a yearly retail basis equal to the rent paid by the residents of the borough.

The borough authority is basing the estimated yearly rental on approximately 1,000 service fees or an estimated \$50,000 per year. Florin residents would then pay the equal or \$50,000 estimated yearly rental. That, fellow citizens is taxation without representation. It is a profitable set up for the borough authority. And also, Florin residents will be helping to pay for the disposal plant without ever acquiring ownership.

The third possibility is that the people of the greater Florin-Mount Joy area consolidate as a unit. This procedure is the least expensive for all property holders concerned and is the most potent stimulant for a better community economically, culturally, socially and spiritually.

Proof—First, let's assume the existing borough has 1,000 service connections to its safe sewage disposal plant. By the addition of the greater Florin-Mt. Joy area, that total service will reach nearly 1,500, thus reducing the individual obligation over a 50% increase in revenue source. Second, the bulk cost of the modern, safe and healthful sewage disposal system is expended in the disposal and filter plant. Should it cost \$100,000 to build a disposal plant for the existing borough, the additional cost to accommodate the needs of a greater Florin-Mount Joy area would only be a fraction of the original plant cost as compared to the 50% increase revenue source for a system to serve the need of a growing and progressing greater Florin-Mt. Joy area.

This, then, the general consolidation of a greater Florin-Mount Joy area, is the answer to the needs of a potential strong community.



WINNING FARM—The farm of Paul Breneman, Mount Joy, R. D. 1, was the winning farm in the Farm Photo Quiz last week. The farm is located north of the Donegal Road, about two miles west of Mount Joy. The Breneman's have owned the farm for four years. It has 115 acres.

Official School Colors To Be Selected Soon

Meetings are in progress to choose the school colors for the new Donegal Joint High School. A committee, composed of four members of the Mount Joy high school, four from East Donegal and two from Marietta, plus a teacher-adviser from each, met last Friday to discuss the new colors.

The group decided to give out ballots to all students from grades 8 to 12 in the three schools to find out the preference of the combined student body. The committee will prepare a statement from these ballots and present it to the joint school board as the students' recommendation.

The final decision of the official school colors will be made by the Donegal School Board. No dates have been set for the final meetings.

Your Citizen Committee has also studied some of the problems involved in promoting a general consolidation of a greater Florin-Mount Joy area. You answered the question, "Should the people of Florin consolidate with the borough of Mount Joy as a means of acquiring the needed sewage facilities?" by a favorable majority of nearly 2 to 1. With your guidance, your committee met with the borough council and the authority with Charles Fish, burgess, as chairman in an informal discussion of our mutual problems.

These are possibilities—1. Schools—Very little change due to the already existing jointure area; obligations to the jointure are already existence. All problems would cease in the event of a union of school districts from grade 1-12. 2. Taxes—Completely new and equally fair assessment should be sought. Borough taxes would be paid for services rendered such as garbage and ash collection, police protection and other borough services. The county tax by law, all property in the county shall be reassessed for county purposes within two years. 3. Streets and alleys will be paved and cared for. Do not expect miracles but should be included in an overall plan. 4. Representation of government—Florin would become the Florin Ward, a part of the greater Florin-Mount Joy political representation. Florin Ward would be represented by members to council. Florin would have its own elected assessor. 5. The Water companies most likely would remain as they exist. 5. The fire companies would remain as they exist.

The Florin citizens committee submits this brief report to the people of Florin. We have been guided by your expressed desires resulting from the survey now on record. With the wisdom granted us by God, the expressed desire of a majority of the people and the collected advice and council, this committee strongly recommends the people of Florin should stand shoulder to shoulder and help develop a strong community whose boundaries shall be determined only by the limit of man's vision geographically, industrially, socially and culturally. This committee most strongly recommends that a greater Florin-Mount Joy community be realized. "In Unity There is Strength."

Florin Citizens Committee
C. Arthur Wolgemuth,
Chairman

Patronize Bulletin Advertisers.

Girl Scout Troop To Reorganize For Year

Girl Scouts that are of high school age are eligible to become members of Senior Troop 56. All Scouts that are interested should be at the meeting on Monday, November 9th, at 7:15 p. m. at the Scout House.

If girls cannot attend the meeting, they are to contact Mrs. Robert Hawthorne prior to the meeting in order to be listed on the next registration. The present activities of Troop 96 include a trip to the Franklin and Marshall Museum, an overnight sleepout and service projects.

LIBRARY ASSISTANTS TO ATTEND CONVENTION
Student library assistants of the local high school and Mrs. Herr, advisor, will attend the seventh annual Student Library Association meeting of southeastern Pennsylvania to be held at Millersville State Teachers College Friday.

Miss Shirley Wade of Mount Joy High School was elected president and will be in charge of the meeting. Mrs. Marian Gerhart will be the guest speaker and a special dinner will be held.

UNION NATIONAL BANK SELLS REAL ESTATE
The Union National Mount Joy Bank, guardian of Amos R. Gish, sold a twenty-one acre farm at public sale on Saturday, Oct. 31, to Clarence Goodling of Rheems for \$13,300.

On Tuesday, the bank as administrator d.b.n.c.t.a. of the estate of Margaret Bopp sold a three story semi-detached dwelling, also, at public sale to Mrs. Joanna Nobs of Mount Joy for \$2,000.

ANNUAL ROLL CALL
The Annual Roll Call of the W.C.T.U. will be held in the St. Mark's Evang. United Brethren Church Monday evening, Nov. 16 at 7:30 o'clock. Members and friends are invited to attend.

Get The Latest Nutritional Developments in "RED TOP" DAIRY FEEDS



Fortified With FORMULA "KNOW HOW" To Give You Healthier Cows ... Greater Milk Production

When you feed "RED TOP" Dairy Feeds you can be certain your herd will give maximum milk production. The health of your cows will be maintained. We are sure of this because "RED TOP" Dairy Feeds are made of the finest ingredients... according to formulas supplied by one of the oldest feed companies in the United States. Their "FORMULA KNOW HOW" goes into every bag of RED TOP!

Reasonable PRICES - EXCELLENT RESULTS
Splendid SERVICE.

For Full Milk Cans and Healthier Cows. Feed "RED TOP"

RED TOP GRAIN & FEED CO.
MOUNT JOY, PENNA.

Everybody, Everywhere, Reads The Bulletin

FAIRVIEW MANOR NURSING HOME

Under Supervision of Registered Nurses, House Physician or Personal Physician retained.
Nurse on duty 24 Hours daily
Home Living Conditions
Phone Columbia 4-7531
Penn and Plane Streets
32-1f

JAMES B. HEILIG
Funeral Director
MOUNT JOY, PENNA.

Quality Meats
ALSO A FULL LINE OF
BIRDS EYE
FROSTED FOODS
Fruits & Vegetables
KRALL'S Meat Market
WEST MAIN ST. MOUNT JOY

Come See...Come Save...in A&P's Harvest of Values!

AP

Armour Star Chopped Ham 12-oz. can 55¢	Armour Star Corned Beef Hash 16-oz. can 27¢	Armour Star Corned Beef 12-oz. can 49¢	Armour Star Miniature Hams 1 1/2-lb. can \$2.09	Armour Treet 12-oz. can 43¢	Fels Naptha Soap 3 large size cakes 22¢	Jello Puddings and Pie Filling 3 pkgs 25¢	Instant Fels Naptha large pkg. 27¢	Ivory Flakes Leaves Clothes, Softer, Smoother large pkg. 27¢	Ivory Snow Softest Possible Soap You Can Buy! large pkg. 27¢	Green Giant Peas 2 17-oz. cans 39¢	Camay Soap For a Softer, Smoother Skin 2 bath size cakes 19¢	Woodbury Soap 4 facial size cake comb. 26¢ Buy 3 facial size cakes at regular price of 25c. Get 4th cake for 1c.	Woodbury Soap 4 bath size cake comb. 36¢ Buy 3 bath size cakes at regular price of 35c. Get 4th cake for 1c.	Sweetheart Soap 3 facial size cakes 22¢	Sweetheart Soap 2 bath size cakes 21¢	Quaker Puffed Wheat 4-oz. pkg. 14¢ Quaker Puffed Rice 4 1/2-oz. pkg. 17c	Green Giant Corn 2 17-oz. cans 35¢
--	---	--	---	---------------------------------------	---	---	--	---	---	--	---	---	---	---	---	---	--

Florida Thin Skin 2 1/2-Size
Oranges 2 dozen 49¢ ONE PRICE NONE PRICED HIGHER
SNOW WHITE (ONE PRICE—NONE PRICED HIGHER)
Cauliflower large head 19¢ CALIFORNIA EMPEROR
Grapes ONE PRICE—NONE PRICED HIGHER 2 lbs. 29¢
Pascal Celery California large stalk 19¢
Sweet Potatoes or Yams 3 lbs. 29¢
Avocado Pears 2 for 29¢
Cole Slaw 2 8-oz. cello. pkgs. 25¢
A&P Seedless Raisins 15-oz. pkg. 19¢

Zero-Kist
Peaches Frozen Slices 2 12-oz. pkgs. 35¢
Orange Juice Old South Frozen 6-oz. cans 89¢
Peas & Carrots Bird's Eye 2 10-oz. pkgs. 29¢

Asparagus Spears Tip Top All Green 14 1/2-oz. can 29¢
Iona Peaches 1953 New Pack Slice or Halves 2 29-oz. cans 49¢
A&P Grapefruit Sections 2 16-oz. cans 29¢
Cranberry Sauce Jersey Delight Strained 2 1-lb. cans 33¢
Grapefruit Juice Florida 46-oz. can 23c 2 18-oz. cans 21¢
Baxter's Potatoes Whole White 3 16-oz. cans 28¢
Hamburgers Claridge, with Brown Gravy or Tomato Sauce 15-oz. can 45¢
Contadina Tomato Paste 3 6-oz. cans 25¢
Pink Salmon Cold Steam 7 1/2-oz. can 25¢ 16-oz. can 43¢
Star-Kist Tuna Chunk Style 5 1/2-oz. can 33¢
Chicken Banquet Whole cooked 4 1/2-lb. can \$1.59 Banded 3 1-lb. cans 31¢

Iona 1953 New Pack Canned-Vegetable Sale!
Tomatoes, Cream Style Corn, Cut Green Beans or Peas
your choice! 3 cans 35¢
Iona Tomato Juice 3 16-oz. cans 10¢ 46-oz. can 23¢

Prune Juice Quaker Maid 24-oz. Sweetened bottle 21¢ Unsweetened quart bottle 25¢
Pancake Flour Sunnyfield 20-oz. 5-lb. bag 37c 12c 40-oz. pkg. 23¢
Ann Page Blended Syrup 12-oz. bottle 25¢ 24-oz. bottle 45¢
Nabisco Chocolate Chip Pecan Cookies or Brown Edge Wafers 9 1/2-oz. pkg. 39¢
Nutley Oleomargarine 2 1-lb. pkgs. 39¢
Dry Milk Solids White House 2 16-oz. cans 57¢
Strawberry Preserves Ann Page 17-oz. glass 29¢
Red Circle Coffee 3-lb. bag \$2.52 1-lb. bag 86¢
Jane Parker Apple Pie Special 8-inch pie 39¢
Fruit Cake Jane Parker 1 1/2-lb. cake \$1.29 3-lb. cake \$2.49
Bread Jane Parker Sliced White 1-lb. loaf 15¢ Still only 1 1/2-lb. loaf 22¢

Clorox
Disinfects, Deodorizes, Bleaches and Removes Stains
quart bottle 17¢ 1/2-gallon bottle 29¢ gallon bottle 49¢

All Prices in This Advertisement Are Effective Through Saturday, November 7th

87 EAST MAIN ST.

MT. JOY, PA.