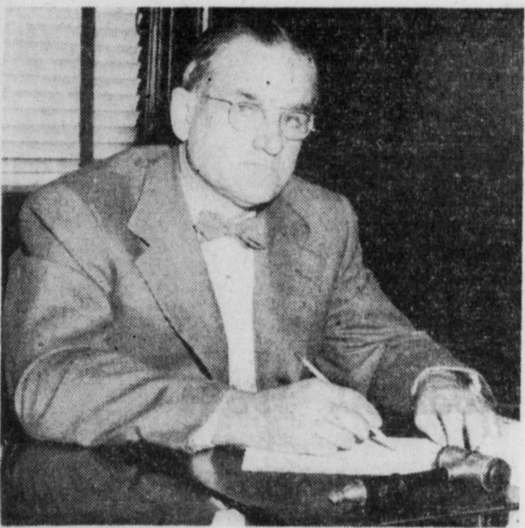


BOARD OF DIRECTORS AND OFFICERS



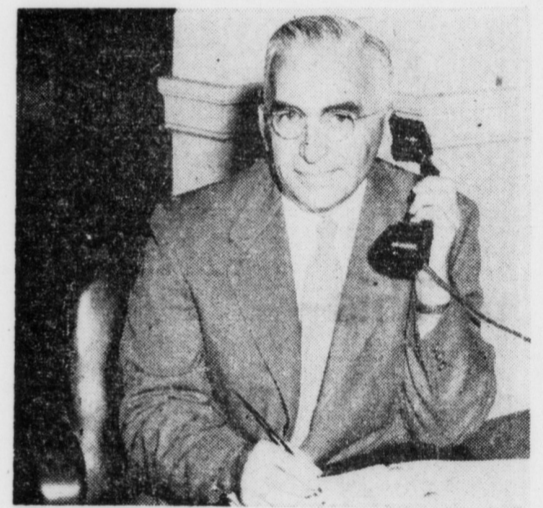
Phares R. Nissley, Alvin J. Reist, W. A. Coventry, John B. Nissley, Martin S. Musser, Henry H. Koser, Claude H. Grosin, Carl S. Krall, Cashier, Harvey Rettew, Clarence S. Newcomer



Martin S. Musser, President



John B. Nissley, Vice President



Carl S. Krall, Cashier, Trust Officer, Secretary



D. Victor Shank, Assistant Cashier, Assistant Trust Officer, Assistant Secretary



Norman H. Sprecher, Assistant Cashier